

Can GDP Measurement Be Further Improved? Data Revision and Reconciliation

Jan P. A. M. Jacobs , Samad Sarferaz , Jan-Egbert Sturm & Simon van Norden

To cite this article: Jan P. A. M. Jacobs , Samad Sarferaz , Jan-Egbert Sturm & Simon van Norden (2020): Can GDP Measurement Be Further Improved? Data Revision and Reconciliation, Journal of Business & Economic Statistics, DOI: [10.1080/07350015.2020.1831928](https://doi.org/10.1080/07350015.2020.1831928)

To link to this article: <https://doi.org/10.1080/07350015.2020.1831928>



© 2020 The Author(s). Published with license by Taylor & Francis Group, LLC.



View supplementary material [↗](#)



Published online: 10 Nov 2020.



Submit your article to this journal [↗](#)



Article views: 322



View related articles [↗](#)



View Crossmark data [↗](#)

Can GDP Measurement Be Further Improved? Data Revision and Reconciliation

Jan P. A. M. Jacobs^{a,b,c,d}, Samad Sarferaz^e, Jan-Egbert Sturm^{e,f}, and Simon van Norden^{d,g,h}

^aFaculty of Economic and Business, University of Groningen, Groningen, Netherlands; ^bUniversity of Tasmania, Hobart, TAS, Australia; ^cCAMA, Canberra, Australia; ^dCIRANO, Montreal, QC, Canada; ^eKOF Swiss Economic Institute, ETH Zurich, Zurich, Switzerland; ^fCESifo, Munich, Germany; ^gDepartment of Finance, HEC Montréal, Montreal, QC, Canada; ^hCIREQ, Montreal, QC, Canada

ABSTRACT

Recent years have seen many attempts to combine expenditure-side estimates of U.S. real output (GDE) growth with income-side estimates (GDI) to improve estimates of real GDP growth. We show how to incorporate information from multiple releases of noisy data to provide more precise estimates while avoiding some of the identifying assumptions required in earlier work. This relies on a new insight: using multiple data releases allows us to distinguish news and noise measurement errors in situations where a single vintage does not. We find that (a) the data prefer averaging across multiple releases instead of discarding early releases in favor of later ones, and (b) that initial estimates of GDI are quite informative. Our new measure, GDP⁺⁺, undergoes smaller revisions and tracks expenditure measures of GDP growth more closely than either the simple average of the expenditure and income measures published by the BEA or the GDP growth measure of Aruoba et al. published by the Federal Reserve Bank of Philadelphia.

ARTICLE HISTORY

Received August 2018
Accepted September 2020

KEYWORDS

Expenditure; Identification;
Income; National accounts;
News; Noise

1. Introduction

Unlike many other nations, U.S. national accounts feature distinct estimates of real output growth based on the expenditure approach (GDE) and the income approach (GDI), see [Figure 1](#). As pointed out by Stone, Champernowne, and Meade (1942), while in theory these two approaches should give identical estimates, measurement errors cause discrepancies to arise.¹ These discrepancies are sometimes important. Chang and Li (2018) examined the impact of using GDI rather than GDE in nearly two dozen recent empirical articles published in major economic journals; they find substantive differences in roughly 15% of them. Nalewaik (2012) found that GDI leads to quicker detection of U.S. recessions than GDE.

While several studies have tried to determine which measure should be preferred in various contexts, Weale (1992) and Diebold (2010) argued that reconciling them is a more useful response as it should incorporate more information. Fixler and Nalewaik (2009) pointed out, however, that reconciliation traditionally relies on the assumption that measurement errors are “noise,” which in turn forces the reconciled estimate of the latent variable (“true” GDP in this case) to be less variable than any of the individual series being reconciled. They instead propose that measurement errors may also include a “news” component. While this causes a loss of identification, they glean information from the revision of GDE and GDI to place bounds on relative contributions of news and noise

in a least-squares framework. Aruoba et al. (2013) considered the problem from a forecast combination perspective, assuming “news” errors and imposing priors in lieu of identification without revisions, while Aruoba et al. (2016) considered alternative identifying assumptions and proposed the addition of an instrumental variable. Almuzara, Fiorentini, and Sentana (2018) investigated a dynamic factor model (DFM) with cointegration restrictions while Anesti, Galvão, and Miranda-Agrippino (2018) proposed a mixed-frequency release-augmented DFM.

Aruoba et al. (2016) is the basis for the GDP⁺ measure published by the Federal Reserve Bank of Philadelphia.² However, while their approach ignores the possibility of data revision, [Figure 2](#) shows that the published series is subject to important revisions, which complicates its interpretation and use in policy decisions. Separately, Jacobs and van Norden (2011) and Kishor and Koenig (2012) proposed state-space frameworks that allow estimation of both news- and noise-type measurement errors in data revision, but do not consider problems of data reconciliation. In this article, we extend Jacobs and van Norden (2011, henceforth JvN) to consider the problem of reconciliation and identification in which there are multiple estimates of the common underlying variable, all of which are subject to revision. Allowing for both news and noise measurement errors, the result is a modeling framework substantially more general than those previously proposed. We show that identification of these two types of measurement errors is made possible by modeling data revisions as well as the dynamics of the series. We provide a

¹The same applies to the production-based estimate of output. See, for example, the study of Rees, Lancaster, and Finlay (2015) on Australian GDP.

²See <http://www.philadelphiafed.org/research-and-data/real-time-center/gdplplus/>.

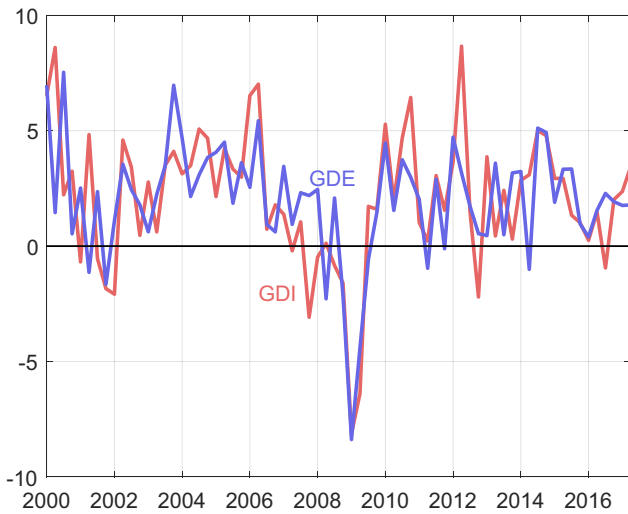


Figure 1. U.S. GDP growth: Expenditure side versus income side.

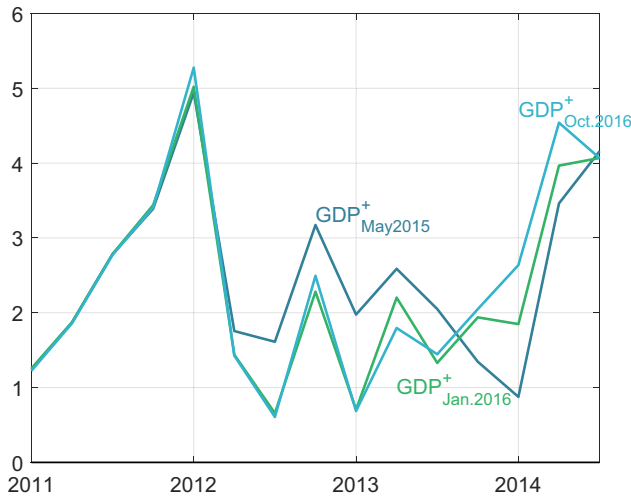


Figure 2. GDP+ in real-time. Various vintages of GDP+. Source: Federal Reserve Bank of Philadelphia.

historical decomposition of GDE and GDI into news and noise shocks, and we compare those series to our improved GDP estimate, GDP⁺⁺. We find that GDP⁺ is more tightly correlated with GDI releases than with the GDE corresponding releases, while the opposite is usually true for GDP⁺⁺. We also find that regardless of the series and the release chosen, GDP⁺⁺ is almost always more positively correlated with the published series than GDP⁺. Consistent with Fixler and Nalewaik (2009), noise errors seems to have a relatively more important role in GDI than in GDE, but GDI still appears to contain valuable information about output growth, particularly in its initial release.

The article is structured as follows. In Section 2, we present our econometric framework. Comparing our model to that of Aruoba et al. (2016), we note the incorporation of multiple data vintages increases the number of observable moments enough to provide identification of all the model's parameters whenever more than one data vintage is used. In an Appendix, we provide a detailed proof of identification based on the work of Komunjer and Ng (2011). In Section 3, we describe our data and estimation method. Results are shown in Section 4 and Section 5 concludes.

2. Econometric Framework

In this section, after establishing some notation, we describe our econometric framework. We then compare the results to the GDP⁺ model of Aruoba et al. (2016) and discuss how the identification of news and noise measurement errors differs in the two models.

We follow the standard notation in this literature by letting y_t^{t+j} be an estimate published at time $t+j$ of some real-valued scalar variable y at time t , while we follow JvN and denote the unobserved “true” value as \tilde{y}_t . We define \mathbf{y}_t as a $l \times 1$ vector of l different vintage estimates of y_t^{t+i} , $i = 1, \dots, l$ so $\mathbf{y}_t \equiv [y_t^{t+1}, y_t^{t+2}, \dots, y_t^{t+l}]'$. We may stack two such series of estimates in a $2l \times 1$ vector $\mathbf{Y}_t \equiv [y'_{1,t}, y'_{2,t}]' \equiv [y_{1,t}^{t+1}, y_{1,t}^{t+2}, \dots, y_{1,t}^{t+l}, y_{2,t}^{t+1}, y_{2,t}^{t+2}, \dots, y_{2,t}^{t+l}]'$.

For state-space models, we follow the notation of Durbin and Koopman (2001)

$$\mathbf{Y}_t = \mathbf{Z} \cdot \boldsymbol{\alpha}_t + \boldsymbol{\varepsilon}_t, \quad (1)$$

$$\boldsymbol{\alpha}_{t+1} = \mathbf{T} \cdot \boldsymbol{\alpha}_t + \mathbf{R} \cdot \boldsymbol{\eta}_{t+1}, \quad (2)$$

where \mathbf{Y}_t is $2l \times 1$, $\boldsymbol{\alpha}_t$ is $(1+4l) \times 1$, $\boldsymbol{\varepsilon}_t$ is $2l \times 1$ and $\boldsymbol{\eta}_t$ is $r \times 1$; $\boldsymbol{\varepsilon}_t \sim N(\mathbf{0}, \mathbf{H})$ and $\boldsymbol{\eta}_t \sim N(\mathbf{0}, \mathbf{I}_r)$. Durbin and Koopman (2001) assumed that both error terms are iid and orthogonal to one another.³ However, we write our model in the form where $\boldsymbol{\varepsilon}_t$ is equal to zero and may be omitted, so (1) simplifies to

$$\mathbf{Y}_t = \mathbf{Z} \cdot \boldsymbol{\alpha}_t. \quad (3)$$

2.1. A Model for Data Reconciliation

Measurement errors are said to be noise (ζ_t^{t+i}) when they are orthogonal to the true values \tilde{y}_t , so that

$$y_t^{t+i} = \tilde{y}_t + \zeta_t^{t+i}, \quad \text{cov}(\tilde{y}_t, \zeta_t^{t+i}) = 0 \quad \forall i. \quad (4)$$

Noise implies that revisions ($y_t^{t+i+1} - y_t^{t+i}$) are generally forecastable. In contrast, measurement errors are described as news (ν_t^{t+i}) if and only if

$$\tilde{y}_t = y_t^{t+i} + \nu_t^{t+i}, \quad \text{cov}(y_t^{t+j}, \nu_t^{t+i}) = 0 \quad \forall j \leq i. \quad (5)$$

If data revisions are pure news errors, current and past vintages of the series will be of no use in forecasting future data revision. Various authors, such as Croushore and Stark (2001), have found that U.S. macroeconomic series seem to be neither pure news nor pure noise. We therefore allow for both types of measurement errors by partitioning the state vector $\boldsymbol{\alpha}_t$ into three components⁴

$$\boldsymbol{\alpha}_t = [\tilde{y}_t, \boldsymbol{\nu}'_t, \boldsymbol{\zeta}'_t]', \quad (6)$$

³For more detailed assumptions, see Durbin and Koopman (2001, secs. 3.1 and 4.1). For convenience, we omit constants from the model in this exposition.

⁴JvN include a fourth component that both allows for more complex dynamics in \tilde{y}_t and permits extensions to problems such as detrending and seasonal adjustment when working with data in levels. Instead, we work with growth rates and follow Aruoba et al. (2016) and many others by assuming that real output growth simply follows an AR(1) process.

of length 1, $2l$, and $2l$, respectively, and we similarly partition

$$\mathbf{Z} = [\mathbf{Z}_1, \mathbf{Z}_2, \mathbf{Z}_3], \quad (7)$$

where $\mathbf{Z}_1 = \mathbf{1}_{2l}$ (a $2l$ column-vector of ones), $\mathbf{Z}_3 = \mathbf{Z}_4 = \mathbf{I}_{2l}$ (both are $2l \times 2l$ identity matrices). The measurement equation (3) therefore simplifies to

$$\mathbf{Y}_t = \mathbf{Z} \cdot \boldsymbol{\alpha}_t = \tilde{y}_t + \mathbf{v}_t + \boldsymbol{\zeta}_t = \text{“Truth”} + \text{“News”} + \text{“Noise.”}$$

Turning to the transition equation (2), the matrix \mathbf{T} is a $(1 + 4l) \times (1 + 4l)$ matrix with only a single nonzero element ρ

$$\mathbf{T} = \begin{bmatrix} \rho & 0 & \dots & 0 \\ 0 & 0 & & \vdots \\ \vdots & & \ddots & \vdots \\ 0 & \dots & \dots & 0 \end{bmatrix}, \quad (8)$$

which captures the first-order autocorrelation of the true values \tilde{y}_t . Both the news and the noise measurement errors are assumed to be uncorrelated through time. What distinguishes them is how they vary across data vintages. This is determined by \mathbf{R} , a $(1 + 4l) \times 4l$ matrix of the form⁵

$$\mathbf{R} = \begin{bmatrix} \mathbf{R}_1 & \mathbf{R}_2 + \mathbf{R}_3 & \mathbf{0} & \mathbf{0} \\ -\mathbf{V}_l \cdot \text{diag}(\mathbf{R}_1) & -\mathbf{V}_l \cdot \text{diag}(\mathbf{R}_3) & \mathbf{0} & \mathbf{0} \\ \mathbf{0} & -\mathbf{V}_l \cdot \text{diag}(\mathbf{R}_2) & \mathbf{0} & \mathbf{0} \\ \mathbf{0} & \mathbf{0} & \mathbf{R}_4 & \mathbf{R}_6 \\ \mathbf{0} & \mathbf{0} & \mathbf{0} & \mathbf{R}_5 \end{bmatrix}, \quad (9)$$

where the row vector $\mathbf{R}_1 = [\sigma_{v_1^1}, \sigma_{v_2^1}, \dots, \sigma_{v_l^1}]$ corresponds to the news uniquely found in y_1 while $\mathbf{R}_2 = [\sigma_{v_1^2}, \sigma_{v_2^2}, \dots, \sigma_{v_l^2}]$ corresponds to all the news found in y_2 and $\mathbf{R}_3 = [\sigma_{v_1^3}, \sigma_{v_2^3}, \dots, \sigma_{v_l^3}]$ captures the news common to both series. $\text{diag}(\mathbf{R}_i)$ is an $l \times l$ diagonal matrix with the elements of \mathbf{R}_i on its main diagonal and \mathbf{V}_l is an $l \times l$ matrix

with ones above the main diagonal and zeros everywhere else. Next, $\mathbf{R}_4, \mathbf{R}_5$, and \mathbf{R}_6 are each $l \times l$ diagonal matrices with nonzero elements $[\sigma_{\zeta_1^i}, \sigma_{\zeta_2^i}, \dots, \sigma_{\zeta_l^i}]$ for $i = 4, 5, 6$. Noise errors unique to series 1 enter via $\mathbf{R}_4, \mathbf{R}_5$ controls all the noise in series 2, while noise errors common to both enter via \mathbf{R}_6 . Finally, we partition the $4 \times l$ vector $\boldsymbol{\eta}$ into four $l \times 1$ vectors $\boldsymbol{\eta}_t = [\boldsymbol{\eta}'_{v_1t}, \boldsymbol{\eta}'_{v_2t}, \boldsymbol{\eta}'_{\zeta_1t}, \boldsymbol{\eta}'_{\zeta_2t}]'$, where $\boldsymbol{\eta}_{vit}$ and $\boldsymbol{\eta}_{\zeta it}$ are the sources for news and noise measurement errors in variable i .

To illustrate, consider the following very simple case. Let $y_1 \equiv \text{GDE}$ (the growth rate of real gross domestic expenditure), $y_2 \equiv \text{GDI}$ (the growth rate of real gross domestic income) and let $l = 2$ (we only consider two vintages, the 1st and 2nd releases). Then (3) becomes

$$\begin{bmatrix} \text{GDE}_t^{1\text{st}} \\ \text{GDE}_t^{2\text{nd}} \\ \text{GDI}_t^{1\text{st}} \\ \text{GDI}_t^{2\text{nd}} \end{bmatrix} = \begin{bmatrix} 1 & 1 & 0 & 0 & 0 & 1 & 0 & 0 & 0 \\ 1 & 0 & 1 & 0 & 0 & 0 & 1 & 0 & 0 \\ 1 & 0 & 0 & 1 & 0 & 0 & 0 & 1 & 0 \\ 1 & 0 & 0 & 0 & 1 & 0 & 0 & 0 & 1 \end{bmatrix} \cdot \begin{bmatrix} \tilde{y}_t \\ \mathbf{v}_t \\ \boldsymbol{\zeta}_t \end{bmatrix} \\ = \begin{bmatrix} \tilde{y}_t \\ \tilde{y}_t \\ \tilde{y}_t \\ \tilde{y}_t \end{bmatrix} + \begin{bmatrix} v_t^{\text{GDE},1} & 0 & 0 & 0 \\ 0 & v_t^{\text{GDE},2} & 0 & 0 \\ 0 & 0 & v_t^{\text{GDI},1} & 0 \\ 0 & 0 & 0 & v_t^{\text{GDI},2} \end{bmatrix} \\ + \begin{bmatrix} \zeta_t^{\text{GDE},1} & 0 & 0 & 0 \\ 0 & \zeta_t^{\text{GDE},2} & 0 & 0 \\ 0 & 0 & \zeta_t^{\text{GDI},1} & 0 \\ 0 & 0 & 0 & \zeta_t^{\text{GDI},2} \end{bmatrix} \\ = \text{“Truth”} + \text{“News”} + \text{“Noise.”}$$

and (2) becomes

$$\begin{bmatrix} \tilde{y}_{t+1} \\ \mathbf{v}_{t+1} \\ \boldsymbol{\zeta}_{t+1} \end{bmatrix} = \begin{bmatrix} \rho & \mathbf{0} & \mathbf{0} \\ \mathbf{0} & \mathbf{0} & \mathbf{0} \\ \mathbf{0} & \mathbf{0} & \mathbf{0} \end{bmatrix} \cdot \begin{bmatrix} \tilde{y}_t \\ \mathbf{v}_t \\ \boldsymbol{\zeta}_t \end{bmatrix} + \mathbf{R} \cdot \boldsymbol{\eta}_{t+1}, \quad (11)$$

where

$$\mathbf{R} = \begin{bmatrix} \sigma_v^{\text{GDE},1} & \sigma_v^{\text{GDE},2} & \sigma_v^{\text{GDI},1} + \sigma_v^{\text{Both},1} & \sigma_v^{\text{GDI},2} + \sigma_v^{\text{Both},2} & 0 & 0 & 0 & 0 \\ 0 & -\sigma_v^{\text{GDE},2} & 0 & -\sigma_v^{\text{Both},2} & 0 & 0 & 0 & 0 \\ 0 & 0 & 0 & 0 & 0 & 0 & 0 & 0 \\ 0 & 0 & 0 & -\sigma_v^{\text{GDI},2} & 0 & 0 & 0 & 0 \\ 0 & 0 & 0 & 0 & 0 & 0 & 0 & 0 \\ 0 & 0 & 0 & 0 & \sigma_\zeta^{\text{GDE},1} & 0 & \sigma_\zeta^{\text{Both},1} & 0 \\ 0 & 0 & 0 & 0 & 0 & \sigma_\zeta^{\text{GDE},2} & 0 & \sigma_\zeta^{\text{Both},2} \\ 0 & 0 & 0 & 0 & 0 & 0 & \sigma_\zeta^{\text{GDI},1} & 0 \\ 0 & 0 & 0 & 0 & 0 & 0 & 0 & \sigma_\zeta^{\text{GDI},2} \end{bmatrix}$$

$$\boldsymbol{\eta}_{t+1} = \begin{bmatrix} \eta_{v_{t+1}}^{\text{GDE},1}, \eta_{v_{t+1}}^{\text{GDE},2}, \eta_{v_{t+1}}^{\text{GDI},1}, \eta_{v_{t+1}}^{\text{GDI},2}, \eta_{\zeta_{t+1}}^{\text{GDE},1}, \eta_{\zeta_{t+1}}^{\text{GDE},2}, \eta_{\zeta_{t+1}}^{\text{GDI},1}, \eta_{\zeta_{t+1}}^{\text{GDI},2} \end{bmatrix}'.$$

⁵An earlier version of this article required news and noise measurement errors to be independent across series. We would like to thank two anonymous referees for encouraging us to generalize the model.

2.2. Identification and GDP⁺

Aruoba et al. (2016) considered the problem of identification in a special case of the GDE/GDI example discussed above where only a single vintage is available ($l = 1$). Their unrestricted model may be written as⁶

$$\begin{bmatrix} \text{GDE}_t \\ \text{GDI}_t \end{bmatrix} = \begin{bmatrix} 1 & 1 & 0 \\ 1 & 0 & 1 \end{bmatrix} \cdot \begin{bmatrix} \tilde{y}_t \\ \epsilon_t^E \\ \epsilon_t^I \end{bmatrix} \quad (12)$$

$$\begin{bmatrix} \tilde{y}_{t+1} \\ \epsilon_{t+1}^E \\ \epsilon_{t+1}^I \end{bmatrix} = \begin{bmatrix} \rho & 0 & 0 \\ 0 & 0 & 0 \\ 0 & 0 & 0 \end{bmatrix} \cdot \begin{bmatrix} \tilde{y}_t \\ \epsilon_t^E \\ \epsilon_t^I \end{bmatrix} + \begin{bmatrix} \sigma_{yy} & \sigma_{yE} & \sigma_{yI} \\ \sigma_{Ey} & \sigma_{EE} & \sigma_{EI} \\ \sigma_{Iy} & \sigma_{IE} & \sigma_{II} \end{bmatrix} \cdot \begin{bmatrix} u_{t+1}^y \\ u_{t+1}^E \\ u_{t+1}^I \end{bmatrix}. \quad (13)$$

Their \mathbf{Z} and \mathbf{T} matrices are identical to the comparable matrices in our model when $l = 1$ and they similarly partition the state vector into “true” values and two types of measurement errors ϵ_t^E and ϵ_t^I . However, their measurement errors are unrestricted combinations of three reduced-form errors u_t^i , $i = \{y, E, I\}$ and as such are not identified. They propose adding a third (instrumental) variable which is correlated with \tilde{y}_t but not with ϵ_t^E or ϵ_t^I , suggesting that household survey data may be suitable for this purpose. We show that the model may instead be identified by increasing the number of vintages analyzed and assuming that measurement errors are the sum of news and noise measurement errors as characterized above. In the Appendix, we provide a rigorous proof of identification. In the remainder of this section, we provide a more informal argument.

Some insights come from the form of the \mathbf{R} matrix in (9). News and noise measurement errors have tightly constrained behavior across successive data vintages, even when they may be correlated across series. Noise errors are assumed to be both uncorrelated across vintages and with innovations in true values. However, news errors must be correlated with one another, and with innovations in true values and their variances by true values. Furthermore their variances must be decreasing as series are revised.

If we have two series to reconcile (such as GDE and GDI) and l vintages of each, we have $2l \cdot (2l + 1)/2$ observable cross-moments as well as $2 \cdot l$ first-order autocorrelation coefficients, for a total of $l \cdot (2 \cdot l + 3)$ moments. The only free parameters in the above model, however, are the autocorrelation coefficient ρ and the $6 \cdot l$ nonzero elements of \mathbf{R} . Obviously, the number of available moments increases with l^2 while the number of free parameters increases only linearly with l .⁷

In the special case where we use only a single data release, $l = 1$, we have $1 + 6 \cdot l = 7$ free parameters to estimate, but only $1 \cdot (2 \cdot 1 + 3) = 5$ available moments with which to do so. This is consistent with the lack of identification noted by Aruoba et al. (2016). However, if we use $l = 2$ data vintages, we have $1 + 6 \cdot 2 = 13$ free parameters and $2 \cdot (2 \cdot 2 + 3) = 14$ moments

with which to identify them. For $l = 3$ we have 27 moments with which to estimate 19 parameters and for $l = 4$ we have 44 moments with which to estimate 25 parameters.⁸

It may also be useful to understand intuitively how the use of multiple vintages aids identification. Estimating true values requires us to distinguish variation due to news from that due to noise. In our model, increasing the variance of noise associated with a particular vintage unambiguously lowers the correlation of that vintage with other vintages of the same series. However, increasing the variance of its news lowers its correlation with earlier vintages but increases its correlation with later vintages *ceteris paribus*. Furthermore, in the presence of serial correlation (ρ), increasing news should increase the correlation across time while increasing noise should not. Both of these effects are present regardless of whether or not measurement errors are correlated across the series being reconciled.

Before turning to examine the usefulness of such a framework for reconciling U.S. GDE and GDI, we note that the above model could be generalized further along lines suggested by the univariate model of JvN. For example,

1. We may wish to relax some of the zero restrictions on the transition matrix in (2) to allow for measurement errors to be correlated across calendar periods. (JvN refer to these as “spillover” effects.) For example, the annual incorporation of tax return data into the National Accounts may cause revisions that are correlated across the various quarters of the tax year.
2. We may wish to allow for more than 2 alternative measures of the same underlying concept. For example, the Office of National Statistics in the UK produces real GDP estimates based on expenditure data, income data, and output data, suggesting a 3-way reconciliation.⁹
3. It may be useful to work with levels of GDP and simultaneously decompose the unobserved “true” values further, for example, into seasonal and nonseasonal components, or into trend and cycle.

We leave such extensions to future research.

3. Data and Estimation

3.1. Data

We use monthly vintages of quarterly expenditure-based and income-based estimates of GDP from the Bureau of Economic Analysis (BEA) covering the period 2002Q1–2017Q1 in Sections 4.1–4.4 and 2002Q1–2019Q1 in Section 4.5.¹⁰ For GDE, we employ the advance, the third, the 12th, and the 24th releases. For GDI, we take the second/third, the 12th, and the 24th releases for GDI.¹¹ Due to a lag in source data availability the

⁸In the Appendix, we show that precisely the same moment conditions arise out of the restrictions derived by Komunjer and Ng (2011).

⁹Rees, Lancaster, and Finlay (2015) explored such a reconciliation for Australian GDP using state-space models similar to those of Aruoba et al. (2013, 2016).

¹⁰The data are taken from the Data Archive published on the BEA website (<https://apps.bea.gov/histdata/histChildLevels.cfm?HMI=7>). Original releases of GDI do not appear to have been published prior to 2002.

¹¹Two releases are sufficient to identify all the parameters in the model, as noted in Section 2.2. Estimates using only two releases are shown in the

⁶See Aruoba et al. (2016, eqs. (A.1) and (A.2)). Their model further differs from the model above in that they model only the *sum* of news and noise shocks.

⁷One must also keep in mind that identification by data revision requires that the data are in fact revised. If not, we effectively return to the underidentified case of $l = 1$.

first available estimate for GDI is released at the time of the second GDE estimate, except for the estimate of 4th quarter GDI, which is released at the time of the third GDE estimate.¹²

3.2. Estimation

We employ Gibbs Sampling methods (see, e.g., Kim and Nelson 1999) to obtain posterior simulations for our model's parameters in (8) and (9). We use conjugate and diffuse priors for the coefficients and the variance covariance matrix, resulting in a multivariate normal posterior for the coefficients and an inverted Wishart posterior for the variance covariance matrix. For the prior for the coefficients restricted to zero, we assume the mean to be zero and variance to be close to zero.

Our Gibbs sampler has the following structure. We first initialize the sampler with values for the coefficients and the variance covariance matrix. Conditional on data, the most recent draw for the coefficients and for the variance covariance matrix, we draw the latent state variables α_t for $t = 1, \dots, T$ using the procedure described in Carter and Kohn (1994). In the next step, we condition on data, the most recent draw for the latent variable α_t and for the variance covariance matrix, drawing the coefficients from a multivariate normal distribution. Finally, conditional on data, the most recent draw for the latent variables and the coefficients, we draw the variance covariance matrix from an inverted Wishart distribution. We cycle through 100k Gibbs iterations, discarding the first 90k as burn-in. Of those 10k draws we save only every 10th draw, which gives us in total 1000 draws on which we base our inference. Convergence of the sampler was checked by studying recursive mean plots and by varying the starting values of the sampler and comparing results.

4. Results

To distinguish between the true unknown values (\tilde{y}_t) of GDP and our model's estimates of these values, we refer to our model's estimates as GDP^{++} .¹³ We compare our measure of GDP^{++} to other measures of GDP using graphs and historical decompositions, as well as by their dynamics and revision properties. We also examine how various releases of GDI and GDE correlate with GDP^{++} as well as with two other "reconciled" measures of GDP: the GDP^+ measure produced by the Federal Reserve Bank of Philadelphia, and the simple average of GDE and GDI growth ($GDP^{50/50}$) published by the BEA.

4.1. Comparison of GDP^{++} and Releases of GDE and GDI

In Figure 3, we compare GDP^{++} and its shaded posterior ranges (90% of probability mass) to the four releases of GDE we employed in the estimation: the advance, third, the 12th, and the 24th release. There is little evidence that the releases

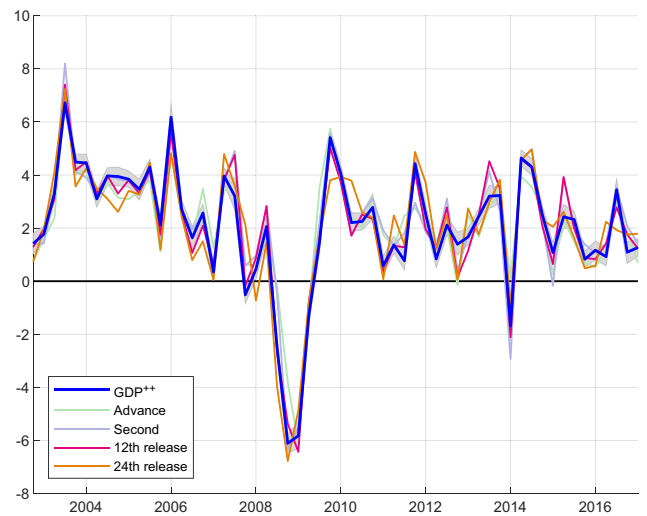


Figure 3. GDP^{++} versus GDE. The blue line represents the posterior median of GDP^{++} (the smoothed estimate of the "true" value) and the shaded area around the blue line indicates 90% of posterior probability mass. The green line represents the advance estimate, the purple line is the second estimate, the red line the 12th release and the orange line the 24th release of expenditure-side GDP growth.

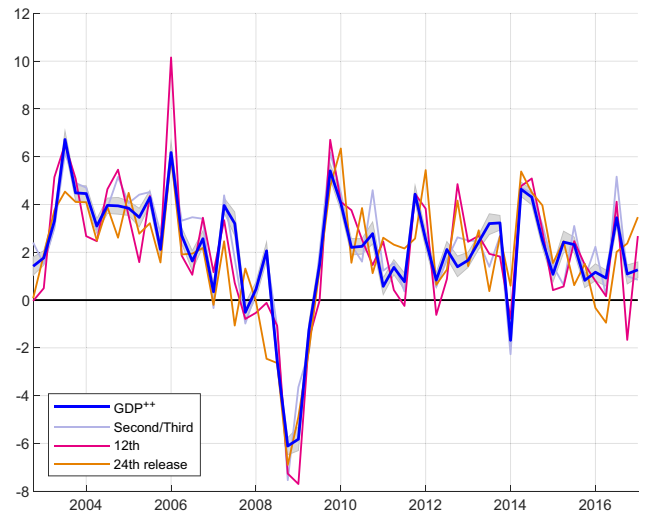


Figure 4. GDP^{++} versus GDI. The blue line represents the posterior median of GDP^{++} , the smoothed estimate of the "true" value, and the shaded area around the blue line indicates 90% of posterior probability mass. The purple line is the second/third estimate, the red line the 12th release and the orange line the 24th release of income-side GDP growth.

are more volatile than GDP^{++} , which suggests that noise-type measurement errors are limited. On the other hand, we observe that the releases are outside the posterior bounds for some periods, particularly for the advance release and the 24th release; in some periods, such as early 2007 and late 2008, the advance release and the 24th release are on different sides of the posterior range.

Figure 4 shows GDP^{++} together with shaded posterior ranges (90% of probability mass) and the three releases of GDI we employed in the estimation: the Second/Third, the 12th and the 24th release. The GDI releases are more volatile than our GDP^{++} estimates (and more volatile than the releases of GDE), which is consistent with the presence of more substantial noise-type measurement error. We also see that the releases are often outside the posterior bounds of the true values.

Appendix. We prefer to use more releases to provide a more precise estimate of true GDP growth. Tests of the overidentifying restrictions provided by increasing numbers of releases could also be of interest. However, it is not evident how to nest a just-identified model within our framework and we leave this issue for future research.

¹²See Fixler, Greenaway-McGrevey, and Grimm (2014) for a more detailed discussion of the GDE-GDI vintage history.

¹³The GDP^{++} series can be downloaded from the following link: <https://kof.ethz.ch/US-GDPplusplus.html>.

	GDP ⁺⁺									
GDP ⁺⁺	1	GDP ⁺								
GDP ⁺	0.72	1	GDP ^{50/50}							
GDP ^{50/50}	0.92	0.83	1	GDE ^{advance}						
GDE ^{advance}	0.93	0.63	0.85	1	GDE ^{third}					
GDE ^{third}	0.95	0.59	0.85	0.94	1	GDE ^{12th}				
GDE ^{12th}	0.97	0.64	0.87	0.93	0.97	1	GDE ^{24th}			
GDE ^{24th}	0.93	0.71	0.94	0.88	0.89	0.93	1	GDI ^{second}		
GDI ^{second}	0.94	0.7	0.85	0.85	0.87	0.85	0.83	1	GDI ^{12th}	
GDI ^{12th}	0.89	0.75	0.86	0.8	0.81	0.8	0.79	0.87	1	GDI ^{24th}
GDI ^{24th}	0.81	0.86	0.95	0.73	0.72	0.73	0.79	0.79	0.84	1

Figure 5. Correlations. Contemporaneous correlations between reconciled GDP measures and various releases of GDI and GDE. GDP^{50/50} represents the mean of the latest vintage of GDE and GDI.

Moreover, Figures A.1 and A.2 in the Appendix compare different releases of GDI and GDE with “ragged edge” estimates of GDP⁺⁺. The latter mimics the problem of estimating the previous quarter’s GDP growth rate by using only the first two releases of GDE and the first release of GDI for the previous quarter, treating as missing observations those releases which are not yet available for other recent quarters, and using filtered rather than smoothed estimates of the state vector.¹⁴ We find results very similar to those shown above, suggesting that revisions in GDP⁺⁺ are relatively minor. We explore this further below in Sections 4.4 and 4.5.

Note that the sample paths of GDP⁺ and GDE and GDI in Aruoba et al. (2016, Figure 3) show a different picture than our Figures 3 and 4. Their measure tends to track GDI more closely than GDE, whereas ours does the opposite. Their result is surprising in the sense that the BEA has long advocated the use of expenditure-based estimates over income-based estimates, arguing that the underlying source data on expenditures were more complete and more reliable. Our model treats the two data sources as symmetric a priori, but arrives at the conclusion that GDE merits more weight in the reconciliation.

This can be seen more clearly in Figure 5, which reports contemporaneous correlations between various releases of GDE and GDI and the various estimates that attempt to reconcile the two. It shows that GDP⁺ is more tightly correlated with GDI releases than with the GDE corresponding releases, while the opposite is usually true for GDP⁺⁺. We also find that regardless of the series and the release chosen, GDP⁺⁺ is almost always more positively correlated with the published series than GDP⁺. (The only exception is the final release of GDI.) It is also more positively correlated with GDP^{50/50}. While there is no objective standard by which to judge that one measure of a latent variable

(like “true” real GDP growth) is superior to another, we take comfort from the fact that our new estimate behaves more like the series that it is intended to reconcile, and that it puts more weight on the series that is generally acknowledged to be the more reliable.

4.2. Historical Decomposition

Our econometric framework in (2) and (3) allows us to decompose each vintage of each of our series into its estimated news and noise measurement errors. The total revision of GDE and GDI can be written as

$$GDE_t^l - GDE_t^1 = \underbrace{-v_t^{GDE,1}}_{\text{News}} + \underbrace{\zeta_t^{GDE,l} - \zeta_t^{GDE,1}}_{\text{Noise}}, \quad (14)$$

$$GDI_t^l - GDI_t^1 = \underbrace{-v_t^{GDI,1}}_{\text{News}} + \underbrace{\zeta_t^{GDI,l} - \zeta_t^{GDI,1}}_{\text{Noise}}, \quad (15)$$

where every element on the right-hand side of the equation is part of the state vector which is estimated along with GDP⁺⁺.

These estimates are shown in Figure 6, with the top panel showing results for GDE and the bottom panel showing those for GDI. We see that total revisions in GDI tend to be larger than those in GDE (note the slight difference in vertical scales between the two panels). We also observe that the news share in total GDE revisions tends to be larger than the noise share. While GDI revisions often incorporate substantial news, some of the largest revisions are due to noise, and noise errors seems to have a relatively more important role in GDI than in GDE. This observation is consistent with Fixler and Nalewaik (2009), who also rejected the pure noise assumption in GDI. It also appears that GDI was particularly noisy in late 2007/early 2008 and around 2013.

4.3. Comparing Alternative Measures of Real Output Growth

To understand more about how the various measures of real GDP growth compare, Figure 7 compares them in terms of their persistence (measured by ρ , their first-order autocorrelation coefficient) and their variability (measured by σ^2). In light gray, we show the (ρ, σ^2) pairs for GDP⁺⁺ across all draws, with $\sigma^2 \equiv \mathbf{r}_1 \cdot \mathbf{r}_1'$, where \mathbf{r}_1 is the first row of \mathbf{R} (as shown in (9)) so that σ^2 captures the innovation variance of shocks to the true values \tilde{y}_t . Against this background, we also show

- the median estimate for GDP⁺⁺,
- the estimates for AR(1) models fit to GDE and to GDI, respectively,
- the estimates for an AR(1) model fit to GDP^{50/50},
- the estimates for the benchmark model estimated in Aruoba et al. (2016) (GDP⁺),¹⁵
- the estimates for a restricted version of our GDP⁺⁺ model, where all measurement errors are assumed to be uncorrelated across GDE and GDI.

Figure 7 reveals that both our model and a version that restricts the measurement errors to be uncorrelated across the

¹⁴To estimate GDP⁺⁺ with “ragged edge” data, we modify our Kalman filter equations to allow for missing observations (see, e.g., Durbin and Koopman 2001).

¹⁵We thank Dongho Song for making his Matlab code available online.

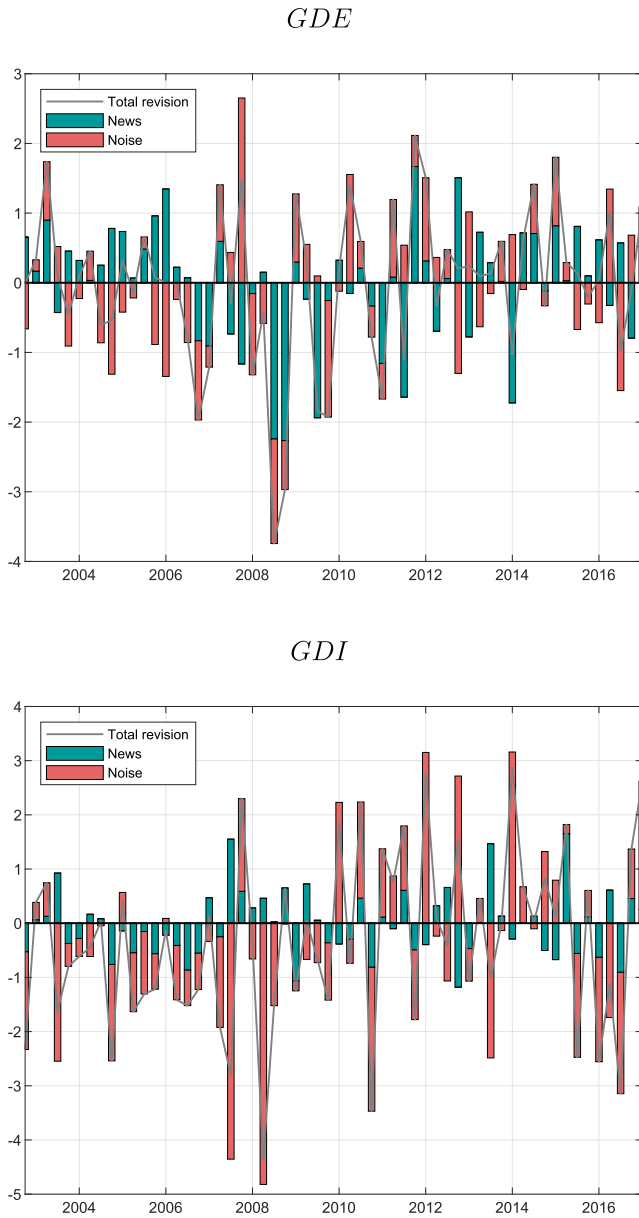


Figure 6. Historical decomposition of total revisions. Historical decomposition of the total revision (24th release minus advance estimate for GDE; 24th release minus second estimate for GDI) into news and noise. The green bars depict the share of news and the red bars the share of noise in total revision (gray line). The historical decomposition is based on the decomposition described in (14) and (15).

two series provide estimates with similar degrees of persistence, although the restrictions decrease the innovation variances somewhat. GDE, GDI, and $GDP^{50/50}$ all have degrees of persistence similar to that of GDP^{++} but considerably higher variance (especially GDE and GDI). GDP^+ has by far the highest persistence, and a variance among the very lowest of those shown.

4.4. Relative Contributions of GDE and GDI to GDP^{++}

To understand the relative importance of the different series and different releases to GDP^{++} , Table 1 presents the Kalman filter gains for each data release. The upper and lower panels of the table show how weights change when we impose the restriction

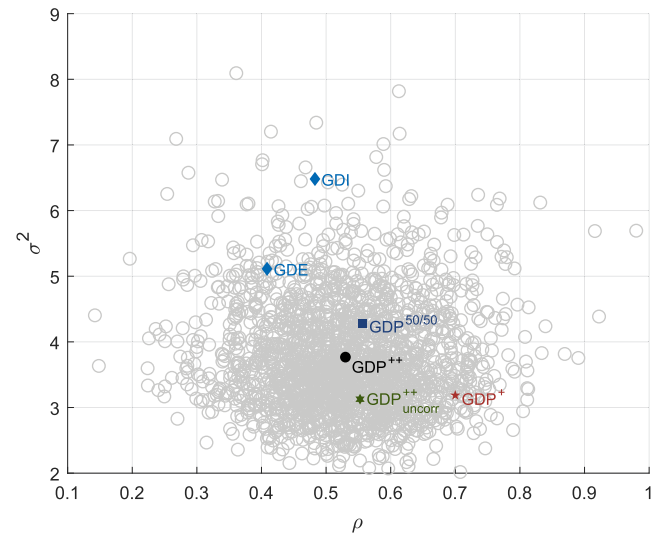


Figure 7. GDP dynamics. The light gray shaded area consists of (ρ, σ^2) pairs across draws and the black circle is the posterior median of the (ρ, σ^2) pairs across draws from our sampler for the news-noise model with correlated measurement errors. The green six-pointed star depicts the posterior median of the (ρ, σ^2) pairs of the news-noise model without correlated measurement errors. The red five-pointed star is the posterior mean of the (ρ, σ^2) pairs of GDP^+ using the benchmark specification ($\zeta = 0.8$) described in Aruoba et al. (2016). The blue diamonds are (ρ, σ^2) pairs, resulting from AR(1) models fitted to GDE and GDI, respectively. The dark blue square is the (ρ, σ^2) pair that results from an AR(1) model fitted to $GDP^{50/50}$. For GDP^{++} σ^2 is defined by $r_1 r_1'$, where r_1 is the first row of R defined in (9). The sampling period for re-estimating the Aruoba et al. (2016) model and for fitting the AR(1) models to the two GDP measures is 2002Q4–2017Q1 (released on May 5, 2019).

Table 1. Kalman gains.

Weight on	Balanced sample		Ragged-edge sample	
	GDE	GDI	GDE	GDI
News and noise				
Advance	0.0272		0.2311	
Second/third	-0.2103	0.3067	0.3363	0.4804
12th	0.7104	0.1081	0	0
24th release	0.0479	0.0125	0	0
Uncorrelated news and noise				
Advance	0.0380		0.1363	
Second/third	0.1240	0.1672	0.4934	0.3768
12th	0.2318	0.0796	0	0
24th release	0.2799	0.0826	0	0

that measurement errors in GDE are uncorrelated with those in GDI. The “balanced sample” column shows the weights when all 7 data releases in our model are available, while the “ragged edge sample” column shows how they change when only the first two releases of GDE and the first release of GDI we use are available for the most recent quarter.

Looking first at the “ragged edge” filter gains, we find that GDP^{++} initially puts almost as much weight on the first release of GDI as on the advance and next available releases of GDE, something we might expect if GDE is thought to be noisy. Restricting the correlations of the measurement errors shifts some weight from GDI to GDE, with the most recent release of GDE receiving a weight of almost one-half.

When all the model’s releases are available, however, GDP^{++} puts most of its weight on the 12th (but not the 24th) release of GDE and the initial (but not later) releases of GDI, suggesting that initial releases of GDI may contain important information

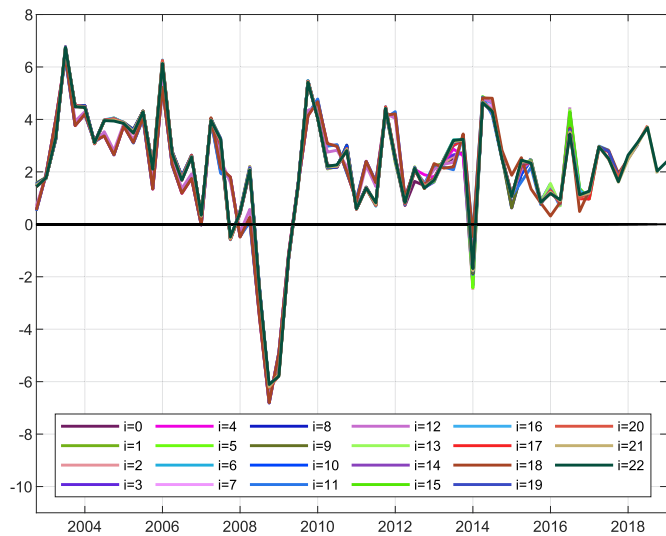


Figure 8. GDP^{++} in real-time. Posterior medians of GDP^{++} from our news and noise model with correlated measurement errors for the samples 2002Q4–2013Q3+ i for $i = 0, \dots, 22$. Each vintage of GDP^{++} is represented by a different colour.

that is somehow then lost as the BEA attempts to reconcile the two measures. We also see that allowing for correlated measurement errors across the two series is critical for this result; with uncorrelated errors, the pronounced weight on the initial release of GDI is greatly reduced and last two releases of GDE are roughly equally weighted.

4.5. Comparing Revisions in GDP^{++} , GDP^+ , and $GDP^{50/50}$

Forecasters and policymakers are increasingly concerned about the revision properties of their data series when they rely on an estimate of recent economic conditions. For that reason, we examine the revisions in GDP^{++} , GDP^+ , and $GDP^{50/50}$ by comparing the “ragged edge” estimates analyzed above with the “full-sample” filtered estimates that become available 22 months after the end of the quarter of the shortest sample. Due to limited availability of GDP^+ vintages, our revision analysis is restricted to the samples 2002Q4–2013Q3+ i for $i = 0, \dots, 22$.¹⁶

Figure 8 reports various vintages of GDP^{++} and shows that its revisions appear moderate. Moreover, most of the revisions seem to occur within the first couple of releases, but a few revisions reach far back to the beginning of the sample, reflecting possible benchmark revisions. Figure 9 compares the absolute value of the total revisions in GDP^+ , GDP^{++} , and $GDP^{50/50}$ for each period. According to Figure 9, GDP^{++} appears to be less prone to revisions than its competitors. This impression is confirmed by the root mean square of the revisions which is 0.39 for GDP^{++} , 1.20 for GDP^+ , and 1.15 for $GDP^{50/50}$.

5. Conclusion

We have described a new approach to data reconciliation that exploits multiple data releases on each series. This helps both with the identification of measurement errors and with opti-

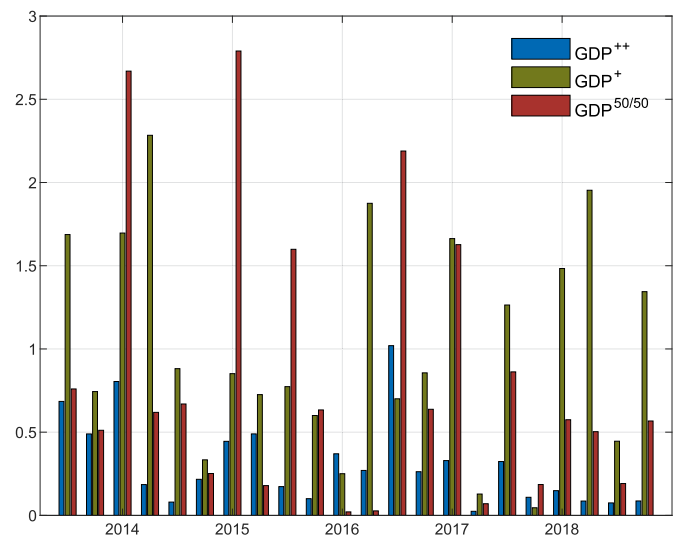


Figure 9. Comparing revisions in GDP^{++} , GDP^+ , and $GDP^{50/50}$. Absolute total revision in $GDP^{50/50}$, GDP^+ , and GDP^{++} . For GDP^{++} , we used the posterior median of our news and noise model with correlated measurement errors, for GDP^+ we employed the benchmark model of Aruoba et al. (2016) and $GDP^{50/50}$ is the mean of GDE and GDI. We incorporated missing observations (as described in Durbin and Koopman (2001)) to allow for ragged edges at the end of the sample. The real-time analysis is based on the samples 2002Q4–2013Q3+ i for $i = 0, \dots, 22$.

mally extracting information from multiple noisy but potentially informative series. We used this to propose a new measure of U.S. GDP growth using multiple releases on GDE and GDI. Our measure GDP^{++} is shown to undergo smaller revisions on average than the GDP^+ measure of Aruoba et al. (2016) or the simple average of GDE and GDI published by the BEA. GDP^{++} also puts more weight on expenditure-side estimates than either of these other measures, consistent with the finding that historical decompositions of GDE and GDI measurement errors reveal a larger news share in GDE than in GDI. Finally, our results point to the importance of smoothing measurement errors across multiple noisy releases.

Supplementary Materials

The Appendix contains a detailed proof of the conditions under which our model is identified, following Komunjer and Ng (2011). It also provides estimates of the posterior distribution of the model parameters for the $l = 2$ case, and compares various vintages of GDE and GDI to the GDP^{++} estimates through to the end of 2018 for the “Ragged-Edge” case.

Acknowledgments

Preliminary versions of this article were presented at the 10th International Conference on Computational and Financial Econometrics (CFE 2016), the XIII Conference on Real-Time Data Analysis, Methods and Applications, Banco de España, the 2018 ESCoE Conference on Economic Measurement and the 2019 Meetings of the Society for Computational Economics. We thank Dean Croushore, Gabriele Fiorentini, Adrian Pagan, Alexander Rathke, and Enrique Sentana as well as two anonymous referees, the editor, and an associate editor for helpful comments.

References

Almuzara, T., Fiorentini, G., and Sentana, E. (2018), “U.S. Aggregate Output Measurement: A Common Trend Approach,” Manuscript. [1]

¹⁶The model was re-estimated for each sample $i = 0, \dots, 22$, that is, once for each quarter that we roll along.

- Anesti, N., Galvão, A., and Miranda-Agrippino, S. (2018), "Uncertain Kingdom: Nowcasting GDP and Its Revisions," Working Paper 764, Bank of England. [1]
- Aruoba, S. B., Diebold, F. X., Nalewaik, J., Schorfheide, F., and Song, D. (2013), "Improving US GDP Measurement: A Forecast Combination Perspective," in *Recent Advances and Future Directions in Causality, Prediction, and Specification Analysis*, eds. X. Chen and N. Swanson, New York: Springer, pp. 1–26. [1,4]
- (2016), "Improving GDP Measurement: A Measurement-Error Perspective," *Journal of Econometrics*, 191, 384–397. [1,2,4,6,7,8]
- Carter, C., and Kohn, R. (1994), "On Gibbs Sampling for State Space Models," *Biometrika*, 81, 541–553. [5]
- Chang, A. C., and Li, P. (2018), "Measurement Error in Macroeconomic Data and Economics Research: Data Revisions, Gross Domestic Product, and Gross Domestic Income," *Economic Inquiry*, 56, 1846–1869. [1]
- Croushore, D., and Stark, T. (2001), "A Real-Time Data Set for Macroeconomists," *Journal of Econometrics*, 105, 111–130. [2]
- Diebold, F. X. (2010), "Comment," *Brookings Papers on Economic Activity*, Spring, 107–112. [1]
- Durbin, J., and Koopman, S. J. (2001), *Time Series Analysis by State Space Methods*, Oxford: Oxford University Press. [2,6,8]
- Fixler, D. J., Greenaway-McGrevy, R., and Grimm, B. T. (2014), "The Revisions to GDP, GDI, and Their Major Components," *Survey of Current Business*, 94, 1–23. [5]
- Fixler, D. J., and Nalewaik, J. J. (2009), "News, Noise, and Estimates of the 'True' Unobserved State of the Economy," U.S. Bureau of Economic Analysis, Department of Commerce and Federal Reserve Board Manuscript. [1,2,6]
- Jacobs, J. P. A. M., and van Norden, S. (2011), "Modeling Data Revisions: Measurement Error and Dynamics of 'True' Values," *Journal of Econometrics*, 161, 101–109. [1]
- Kim, C.-J., and Nelson, C. R. (1999), *State-Space Models With Regime Switching*, Cambridge MA: The MIT Press. [5]
- Kishor, N. K., and Koenig, E. F. (2012), "VAR Estimation and Forecasting When Data Are Subject to Revision," *Journal of Business & Economic Statistics*, 30, 181–190. [1]
- Komunjer, I., and Ng, S. (2011), "Dynamic Identification of Dynamic Stochastic General Equilibrium Models," *Econometrica*, 79, 1995–2031. [2,4,8]
- Nalewaik, J. J. (2012), "Estimating Probabilities of Recession in Real Time Using GDP and GDI," *Journal of Money, Credit and Banking*, 44, 235–253. [1]
- Rees, D. M., Lancaster, D., and Finlay, R. (2015), "A State-Space Approach to Australian Gross Domestic Product," *Australian Economic Review*, 48, 133–149. [1,4]
- Stone, R., Champernowne, D. G., and Meade, J. E. (1942), "The Precision of National Income Estimates," *Review of Economic Studies*, 9, 111–125. [1]
- Weale, M. (1992), "Estimation of Data Measured With Error and Subject to Linear Restrictions," *Journal of Applied Econometrics*, 7, 167–174. [1]