

()
(GIS)

.

.

.

2007

()
(GIS)

. 2007 / 5 / 13

_____	_____		
.....	()	/	.1
.....	()	/	.2
.....	()	/	.3
.....	()	/	.4

.....

.

.

.

.

.

.

.

.

.

*

*

:

1	–	1
2		1.1
3		1.2
4		1.3
4		1.4
5		1.5
5		1.6
6		1.7
7		1.8
8		1.9
9		1.10
15		1.11
16		1.12
17	–	2
18		201
18		2.1.1
21		2.1.2
22		2.2
22		2.2.1
25		2.2.2
27		2.2.3

30		2.3
30		2.3.1
31		2.3.2
31		2.3.3
32		2.3.4
34		2.3.5
37	–	3
38	()	3.1
38		3.2
39		3.2.1
40		3.2.2
41		3.3
42		3.3.1
43		3.3.2
45		3.4
47		3.4.1
48		3.4.2
52	–	4
53		4.1
54		4.2
54		4.2.1
57		4.2.2
58		4.2.3
62		4.3
62		4.3.1
63		4.3.2
63		4.3.3
67		4.4
68		4.5
71		4.6
72		4.7
73		4.8

74		4.9
76		4.10
76		4.11
77		4.121
79	–	5
80		5.1
80		5.1.1
82		5.1.2
84		5.1.3
86		5.2
89		5.3
91		5.4
91		5.5
92		5.6
93		5.7
94		5.8
96		5.9
97		6
98		6.1
99		6.1.1
111		6.1.2
114		6.1.3
116		6.1.4
118		6.1.5
120		6.1.6
121		6.2
123		6.3
128		6.4
131		6.5
131		6.5.1

132		6.5.2
133		6.5.3
136		6.5.4
140		6.5.5
141	- 2017	7
170	-	8
171		1.8
174		2.8
176		
181		
b		

10		1
22		2
23	1997	3
24	1997	4
25	(10) 1997	5
26	1997	6
26	1997	7
27	() 2006	8
28	2006	9
29	(10) 1997	10
30	2006	11
34		12
54		13
56		14
59		15
60		16
61		17
64		18
64		19
66		20
67		21
70		22
71		23
73		24
73		25
74		26

75		27
81		28
83		29
84		30
85		31
86	2006	32
87		33
88		34
88		35
90		36
92		37
93		38
94		39
95		40
96		41
99		42
100		43
102		44
105		45
106		46
111		47
114		48
116		49
118		50
120		51
121		52
122		53
123		54

124		55
125		56
131		57
132		58
140		59
143	2016	60
148		61
150		62
150		63
151		64
151	()	65
152	()	66
152		67
153		68
153		69
154		70
155		71

19		1
35		2
101		3
103		4
104		5
107		6
108		7
109		8
110		9
112		10
113		11
115		12
117		13
119	()	14
126		15
127		16
156		17
157		18
158		19
159		20
160		21
161		22
162		23
163		24
164		25
165		26
166		27
167		28
168		29
169		30

21		1
46		2
46		3
48		4
49		5
50		6
51		7
133		8
133		9
134		10
134		11
135		12
135		13
136		14
136		15
137		16
137		17
138		18
138		19
139		20
139		21

32	1966	1
36	2006	2
82		3
89		4
90		5
91		6

182		1
183		2
184		3
185		4
186		5
187		6
190		7

()
(GIS)

الهدف الرئيسي لهذه الأطروحة هو تحليل وتقييم واقع الخدمات العامة في بلدة طمون من حيث توزيعها وكفايتها ومقارنتها بالكثافة السكانية والعمرانية لكل مجاورة سكنية في البلدة بالرجوع إلى المعايير التخطيطية لهذه الخدمات، بالإضافة إلى تحديد أولويات التنمية العمرانية في البلدة خلال الفترة الزمنية القادمة.

(GIS)

(SPSS).

1.1

2.1

3.1

4.1

5.1

6.1

7.1

8.1

9.1

10.1

11.1

12.1

1.1

:

•

.

:

•

.

.

.

2.1

1967

.

.

()

.

3.1

:

•

.

•

.

(GIS)

•

.

•

.

4.1

:

.1

.

.2

.

.3

.

.4

.

:

5.1

2006

4914

1999

.(28-3)

6.1

.

:

•

:

:

•

.

-

.

-

.

-

. -
 . -
 .() -

7.1

:

.0.05

:

.1

.0.05

.2

.0.05

.3

.0.05

.4

.0.05

.5

.0.05

:

8.1

:

.1

.

.2

.

.3

.

.4

.

.5

.

.6

.

.7

.

.8

.

.9

.10

.

:

9.1

- :

-1

.

- :

-2

()

%20

:

.

- :

-3

(Arc view GIS)

. (SPSS)

- : -4

.

: **10.1**

- 1

.

:

•

.

:

•

.1

.

.2

.

.3

.

•

.

-1

) %20

2005

: (1) (

(1)

		2		
26	27	56142		1
34	36	69370		2
34	40	107793		3
46	68	891571		4
59	83	1023689		5
47	54	644013		6
55	87	885713		7
49	68	738144		8
30	43	497399		9
380	* 506			

. :

*

:

)

•

.(

)

:

•

.(

: •

-:

: (

.

: (

.

: (

.

: (

.

: (

.

: (

.

: () (

.

: (

.

: **.3**

•

1

.

•

1

.

.4

:

: (

:

$$3 = 224 - 150$$

$$2 = 149 - 75$$

$$1 = 74 - 1$$

$$6 = 449 - 375$$

$$5 = 374 - 300$$

$$4 = 299 - 225$$

: (

: (/)

$$3 = 2.24 - 1.5$$

$$2 = 1.49 - 0.75$$

$$1 = 0.74 - 0$$

$$6 = 4.49 - 3.75$$

$$5 = 3.74 - 3$$

$$4 = 2.99 - 2.25$$

:() (

.(/)

$$2 = \quad / \quad 0.99 - 0.5 \quad 1 = \quad / \quad 0.5$$

$$4 = \quad / \quad 1.99 - 1.5 \quad 3 = \quad / \quad 1.49 - 1$$

$$6 = \quad / \quad 2.99 - 2.5 \quad 5 = \quad / \quad 2.49 - 2$$

: (

:

$$3 = \% 29 - 20$$

$$2 = \% 19 - 10$$

$$1 = \% 9$$

$$6 = \% 59 - 50$$

$$5 = \% 49 - 40$$

$$4 = \% 39 - 30$$

.

: (

$$3 = 5$$

$$2 = 4$$

$$1 = 4$$

$$6 = 8$$

$$5 = 7$$

$$4 = 6$$

.

: (

$$3 = 3.49 - 3$$

$$2 = 2.99 - 2.5$$

$$1 = 2.5$$

$$6 = 4.99 - 4.5$$

$$5 = 4.49 - 4$$

$$4 = 3.99 - 3.5$$

.5

:

:

:

(

$$3 = \% 44 - 30$$

$$2 = \% 29 - 15$$

$$1 = \% 15$$

$$6 = \% 75$$

$$5 = \% 74 - 60$$

$$4 = \% 59 - 45$$

:

.

:

(

:

$$2 =$$

$$1 =$$

$$4 =$$

$$3 =$$

$$6 =$$

$$5 =$$

$$6$$

(Features)

:

.

:

-

.

:

-

.

:

-

.

:

-

.

:

-

.

:

-

).

:

()

-

(

.

-

: **.6**

.

: **.7**

(SWOT)

.

: **11.1**

.

.

.

2016

.

: 12.1

:

: .1

.

: .2

.

: .3

.

.4

:

.

:

•

.

:

•

. % 20

1.2

1.1.2

2.1.2

2.2

1.2.2

2.2.2

3.2.2

3.2

1.3.2

2.3.2

3.3.2

4.3.2

5.3.2

: 1.2

: 1.1.2

(187.750)

(186.460)

. 23

2

.(439 2002) 28

370

.(349 2002) 548

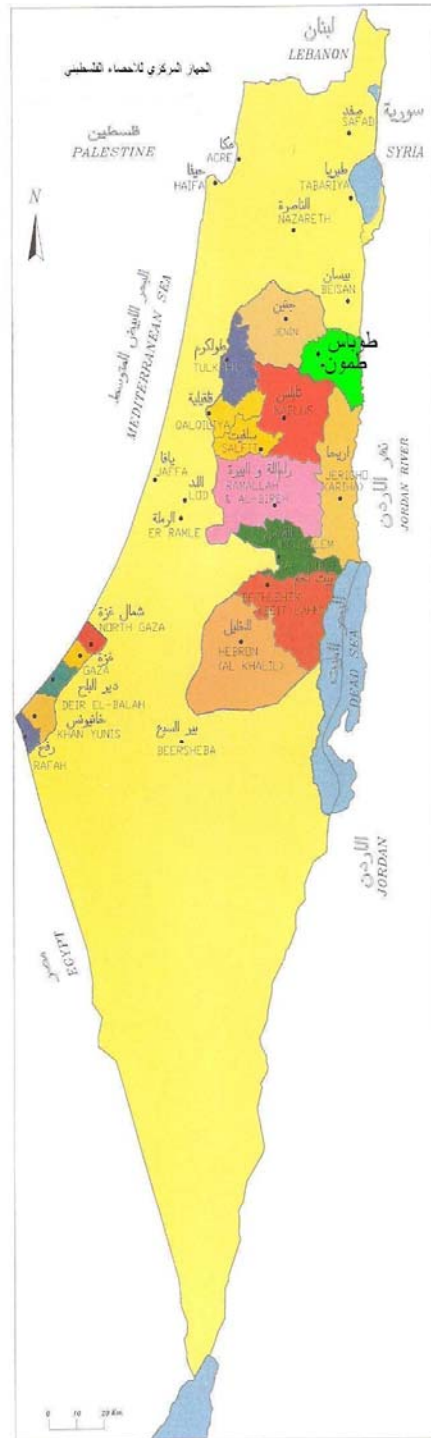
.

()

)

() (

خارطة رقم (1) : منطقة الدراسة بالنسبة الى المدن الفلسطينية



المصدر : الجهاز المركزي للإحصاء الفلسطيني، المسح الشامل للسكان والمنشآت، 1997 م

.

.

:

.1

.2

.3

.4

.5

.6

.7

.

316 1931 ()

2002) 98080

(439

2.1.2 :

(121 1984)

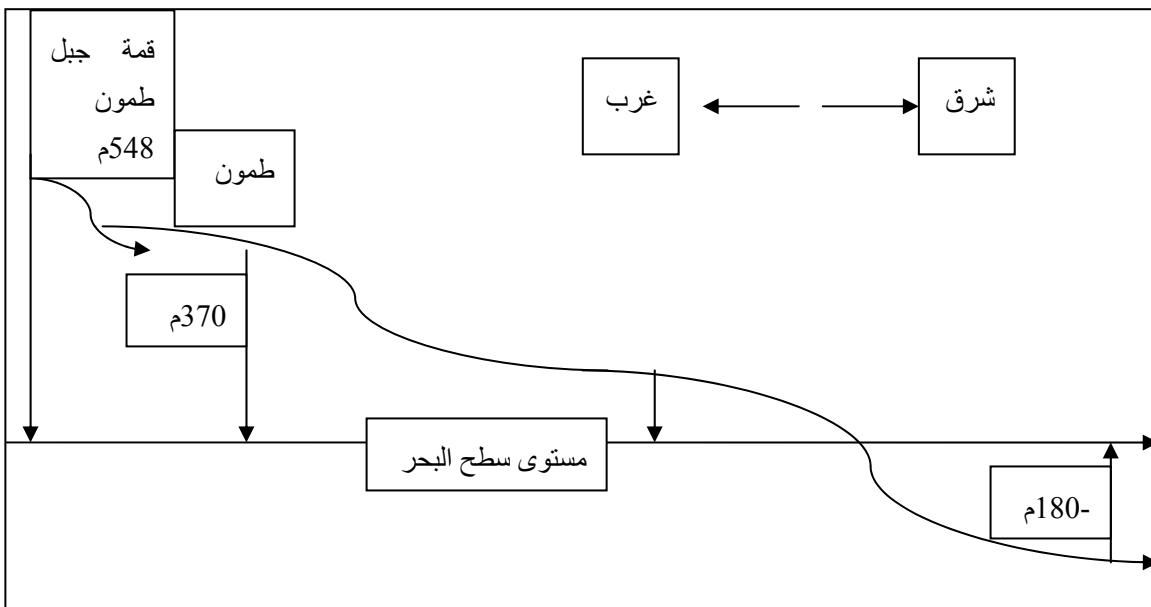
180

.(1)

2000) 300

.(

:(1)



: 2.2

: 1.2.2

.(439 2002)

7635 1997

% 49.4

%22

. 2006 (2) .

. : (2)

1345	*1922	1
1599	*1931	2
2070	*1945	3
2593	*1961	4
7635	**1997	6
10441	***2006	7

.440 2002 : *

. 1997 : **

2006 : ***

. 1997

15

65-15

% 45.5

4.6

65

% 49.9

.(3)

%

:(3)

1317	636	681	4-0
1197	608	589	9-5
962	509	453	14-10
3476	1753	1723	14-0
800	375	425	19-15
744	340	404	24-20
612	300	312	29-25
460	236	224	34-30
343	172	171	39-35
273	160	113	44-40
167	80	87	49-45
148	91	57	54-50
126	81	45	59-55
135	86	49	64-60
3808	1921	1887	64-15
148	73	75	69-65
74	45	29	74-70
58	26	32	79-75
30	20	10	84-80
19	11	8	89-85

14	10	4	94-90
6	5	1	99-95
349	190	159	65+
2	1	1	
7635	3865	3770	

. 1997 :

(1281) 1997

% 13 (5) 11 -1

.(4)

. 1997 :(4)

43	43	1
268	134	2
375	125	3
592	148	4
835	167	5
870	145	6
987	141	7
960	120	8
846	94	9
640	64	10
1229	100	11+
7635	1281	

. 1997 :

5.96 1997 (4)

.5.7

1997

802	642	160	
1026	540	486	
1394	685	709	
1025	465	560	
553	200	353	
169	54	115	
137	31	106	
5	1	4	
7	-	7	
-	-	-	
3	3	-	
5121	2621	2500	

. 1997 :

2.2.2

25

1997

1490

4914

2 / 5124 (1997)

1997

1999

1669

8202

.2 /

(3)

% 88 (1442

. 1997 (6)

. : (6)

1442	5	75	44	14	0	28	1271	5

. 1997 :

% 81

(7)

. 1997

. 1997 : (7)

1367	16	145	52	51	1103

. 1997 :

(570) 2006

.(2006) 2 24062

: 3.2.2

(439 2002) ()

22730 10.000

(8) 886

()

.2006

() : (8)

. 2006

250	650	22.730	
65	210	95	
5	15	30.000	()
11	11	150	

. 2006 :

% 70

(30612) () (71.000)

(20110)

(9)

.

. 2006

:(9)

20110	
3771	
92	
35	

. 2006

:

2000 (20)

(150)

(25)

) (90)

2006

.(2006

% 22.5 ()

1997

% 92.7

10

10

(10)

. 1997

(10) :**(10)**
. 1997

1293	96	1197		
344	21	323		
83	8	75		
1720	125	1595		
1506	738	768		
1287	1287	-		
156	79	77		
40	2	38		
402	384	18		
3391	2490	901		
10	6	4		
5121	2621	2500		

. 1997 :

(99) (189) 2006
.(2006) (11)

. 2006

:(11)

151	
18	
3	
17	
189	

. 2006

:

1948

3.2

1.3.2

.(115 1999)

1861

1311) 1881 2002 .(440

2.3.2 :

1921

.

.

1924

)

.(

3.3.2 :

1948

()

) ()

1985 .(133

1961-9-1

1965-12-16

(124 1984)



. 1966 :(1)

: 4.3.2

1967

)

(170 1985

1976

1991-11-28

. 1490

1967

:()

:

-1

. 30.000

-2

:

(12)

)

.(2002

:(12)

	1997				
100	144	675		1972	
180-	157	833		1968	

. 2002 :

90 :

.

: 5.3.2

1994

.

1996

(2)

1997-8-23 .

1999-9-7

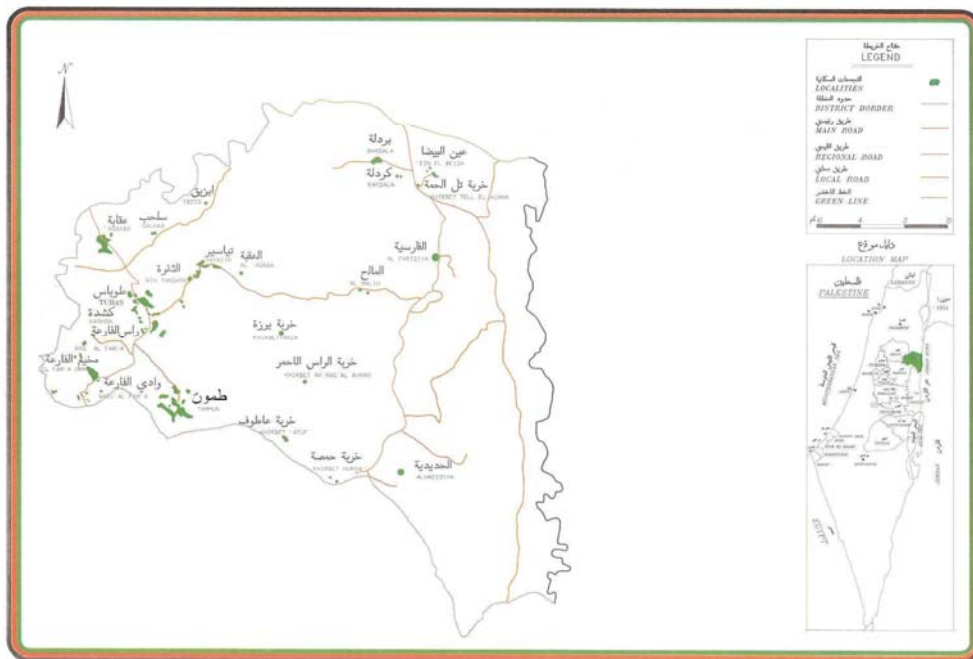
2000

-2-1

2001

2005-9-29

:(2)



المصدر: الجهاز المركزي للإحصاء الفلسطيني. المسح الشامل، 1997 م .



. 2006 :(2)

1.3

2.3

1.2.3

2.2.3

3.3

1.3.3

2.3.3

4.3

1.4.3

2.4.3

: **1.3**

() ()
()

.(30 1990)

)

.(168 2006) (.....

()

(Master Plan)

.(158 2006)

- : **2.3**

.....

(FAO)

.(FAO , 1993 , p 85)

.

.

"

.(33 2001)

- : **1.2.3**

(108 1972)

:

- : .1

.2 :

2.2.3 -:

.1 (Residential Area) :

(262 2002) % 39

% 67

(117 2002) % 60 % 63

.2 (Roads Area) : % 20

.(263 2002)

(Industrial Area) : .3

.

(Business Area) : .4

(CBD)

.

(Utilities Area) : .5

.

- : **3.3**

.(184 1997)

.

.

.

- : **1.3.3**

- : .1

.(99 1995)

- : .2

(Location)

(Situation)

.

.3 - :

.

.4 - :

. (26 2003)

- : **2.3.3**

.1 :

2500-1 5000-1

.

.2 - :

:(FAO, 1993, P 3)

(Efficiency)

•

.

.(Acceptability and Equity)

•

(Sustainability)

•

.

(Legit)

•

.

(Flexibility)

•

.

- :

.3

:

.

•

.

•

•

•

.

•

.

•

.

- :

.4

)

.(21 2005

: () .5

.

: .6

.

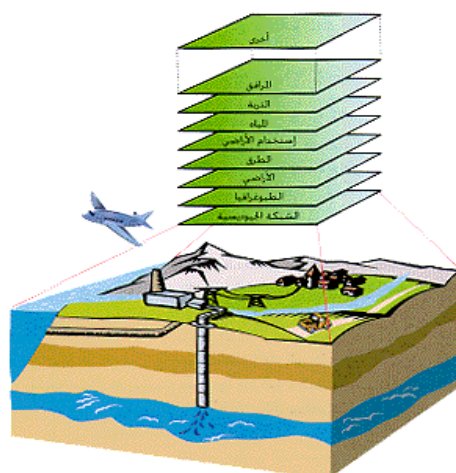
- :(Geographic Information Systems) 4.3

.

) (7)

.(2001

:(7)



(GIS)

.(36 2006) (8)

:(8)



:(2001)

.1

.2

.3

- : 1.4.3

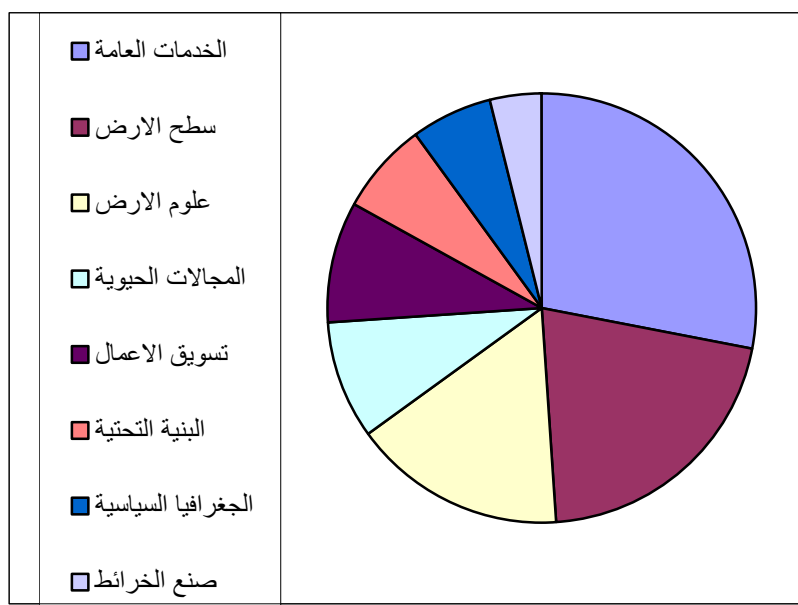
(32 2000)

1995

: (13)

% 28	Utilities	.1
			.
		Land information	.2
	.	% 21
		Geosciences	.3
	.	% 16
		Biological use	.4
	.	% 9
.....		Business	.5
		% 9	
		Infrastructure	.6
	.	% 7
		Geopolitics	.7
	.	% 6
	.	% 4	
		Cartography	.8

:(13)



- :

2.4.3

(2005 181) .

(2000)

:

Information retrieval : .1

Thematic mapping : .2

:(14)



Overlay : .3

Network Analysis : .4

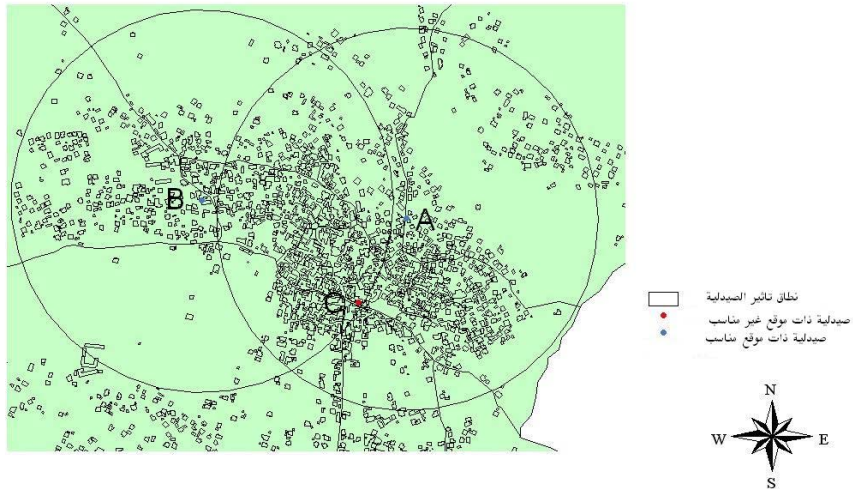
Digital terrain analysis : .5

Elevation Model

Buffer and corridors:

.6

:(15)



A

C

B

Map Projection :

.7

Spatial measurement :

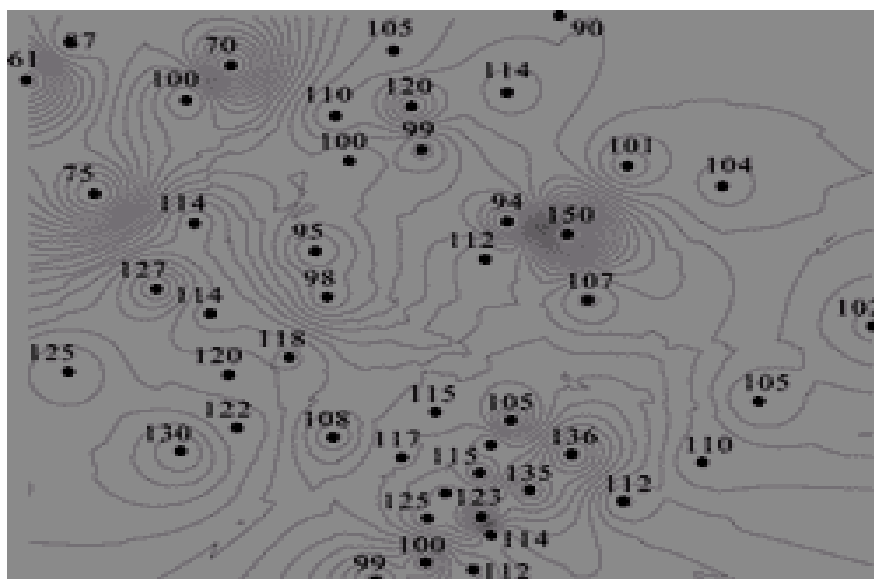
.8

Spatial Analysis 3D :

.9

Spatial Interpolation : .10

:(16)



1.4

2.4

3.4

4.4

5.4

6.4

7.4

8.4

9.4

10.4

11.4

12.4

: 1.4

:

•

.

•

.

()

•

.(317 1995)

:

:()

•

(Effect Zone)

:

.

:

•

- : **2.4**

.(13)

:(13)

12 – 10	9 – 7	6 – 1	-
12 – 9	8 – 7	6 – 1	-
12 – 9	-	8 – 1	-

.359 1998 :

.(359 1998) ()

: **1.2.4**

6- 4

4 – 2.5

.

:(360 1998)

.1

400 – 200

.2

.3

.4

)

.(71 2002

30 4 25 3 20

(2 4500) . 5

1995) 50

: .(319

.1

.2

.3

.4

.5

.6

.7

.8

/ 2 10 – 5

(7 2003)

2000

/ 2 0.7

.2 140

: (14)

:(14)

100-15		1
1000 -150	2	2
10 - 5	2	3
4-1		4
30-25/		5
30-25		6
400-200		7
		8

.(319 ,318), 1994 ,(354,360,361) 1998 :

: 2.2.4

12 – 6

6 – 1

% 9

% 15

:

. 25 – 6

.1

.

:

.2

.

.3

.

.4

.

.5

.

.6

.

.7

.

.8

1998)

2 400

.9

.(362

30

.

$$800 - 400$$

$$.(362 \quad 1998 \quad) \quad 800 - 400$$

$$/ 2 \quad 8$$

$$/2 \quad 10$$

:

3.2.4

$$(12 - 10)$$

$$(9 - 7)$$

$$:(78 \quad 2002 \quad)$$

.1

.2

.3

.4

$$. \quad 1000 - 750$$

(17) (16) (15)

:(15)

1200 – 250	960 – 240	840	800 – 500		1
79 – 31	10 – 5	10 – 8.5	110 – 22	2	2
8.82	3.25 – 1.01	4.2 2.04	24 – 9	2	3
28.5 – 11.2	32 – 20	42 – 24	40.9 – 21.8	%	4
35 – 25	21 – 10	11.9 – 10	137.5 – 44	2	5
35 – 7.3	4.2 – 3.4	5 – 2.4	30 – 18	2	6
38 – 8	24 – 6	24	20		7
32 30	40	35	32 – 30		8
800 – 400	800 – 400	800 -400	800 – 400		9
					10

.88 2002 :

:(16)

1600 –800	1120 –320	840	1200 – 800		1
141 – 79	10 – 7	13 – 3	221 – 44	2	2
22	4 – 1.35	6 – 2	48 – 22.4	2	3
27.8 –15.6	40.1 –19.3	67 – 46	50.9 – 21.7	%	4
30 – 25	21.9 – 8.9	15.5 – 3.6	182.2 – 28	2	5
27.5 –13.7	4.1 – 3.6	7.1 – 2.4	40 – 28	2	6
50 – 25	24 – 8	24	40 – 30		7
32 – 30	46 – 40	35	27		8
1200-800	1500-1000	1500-1000	1500-1000		9
					10

.87 2002 :

:(17)

2700-1000	1120 -320	1260-720	2000-1200		1
220 -141	10 - 7	25.2 -11.9	442 - 88	2	2
27	4 - 1.35	11.2 - 4.4	100 - 42	2	3
19.1 -12.3	40.1-19.3	61 - 17	47.8 -22.6	%	4
30 - 25	21.9 - 8.9	30.9-13.2	221 - 73	2	5
27 - 10	4.1 - 3.6	13.2 - 4	50 - 35	2	6
77 - 28	24 - 8	40 - 24	75 - 50		7
35 - 30	46 - 40	36 - 30	25		8
1600-1200	2000-1500	2000-1500	2000-1500		9
					10

86 2002 :

: 3.4

1990)

:(221

.1 .

.2 .

.3 .

: 1.3.4

:(375 1998)

: .1

.

: .2

.

: .3

.

.4 .

.

: **2.3.4**

: .1

– 20

. 50

: .2

200 – 100

.

: .3

500 – 300

.

: .4

.

: **3.3.4**

/2 1

.(18)

:(18)

	15000	4000		
	0.15	0.12	(2)	
	250000	20000		
	4	2		
	250	150	2	

.11 2003 :

:(19)

:(19)

* * * * *	1 2 0.2	* / *	999 – 1		
* * * * *	1 1 1 1	* * * *	– 1000 2999		

*					
*	2	*	- 3000		
	1	*	9999		
	1				
*	1	*			
*	1	/ *			
	2	*			
	0.5				
	1	*			
	1	*			
	1	*			
	0.5	*			
	1	*			
		/ *			
		*			
		*			
*	4	*	- 10000		
	3	*	25000		
	2				
*	2	*			
*	3	/ *			
	1	*			
	2	*			
	2	*			
	1	*			
	2	*			
	2	*			
	1	*			
	1	*			
	1	/ *			
		*			
		*			
		*			
		*			

223 2004 :

. 1994

(20)

:(20)

*	*		
1596/	218/	164	
7376/	963/	16	
3216/	456 /	23	
5616/	767/	46	
-	/ 0.4	20	
-	/ 0.6	4 7	
1987/	271/	130	

126-110 2004 :

. 2003 - 1999

*

. 261756 35760 2006

*

. 15

*

. 15

500

)

(122 2003

(21)

:(21)

/	
5000 /1.25	
15000/1	
7500/1	
5000/2	/
4000/1	
5000/1	/
5000/2	

MOH, 2002, P129 :

: **4.4**

1998) ()

:(380

.1

.2

.3

.4

:

.% 45

•

.% 25 – 20

•

.2 1

•

800

200-150

500

)

.(

:

5.4

(Open Space)

.(349 1998)

:

.

▪

.
 .
 :(
 .
 .
 .
 .%15 %17.5 % 37 % 26 :
 .
 . 1000/ 2 4200 - 2100
 / 2 0.6
 = 5000
 .2 3000
)
 :(
 .1
 . 5000 -2500
 .2

.3

.4

300

2

.5

.6

.(22)

:(22)

		()	/2	(2)		
			2 - 1	70- 20	100	
/	()	0.8 - 0.4	1- 0.33	10- 5	15- 10	
		0.35 - 0.2	1.66 - 0.8	5000-4000	5- 3	

.18 2003

المصدر:

(23)

:(23)

	2 1.67	2 0.4	200 =	
	2 1.2	2 0.7		
	2 2.5	2 1.0		

2003 18.

المصدر:

6.4 :

:

1.

2.

3.

.4

.

.5

.

.

:

7.4

.

:(386 1998)

.1

.

.2

.

.3

.

.4

.

(24)

:(24)

500	250	10	5	2.5	-
1400	700	350	250	200	2 -

.368 1998 :

: **8.4**

:

.(25)

:(25)

	15000	10000		
	1	0.5		
2 25	0.07	0.04	2	
	250000	50000		
	8	5		
2 25	0.04	0.02	2	

.14 2003 :

： 9.4

：
：
()

(26) .

:(26)

	30000	20000		
	5	3		
	5	-	()	
2 25	0.1	0.06	2	
	250000	80000		
	30	-		
	20	-	()	
2 25	0.04	0.02	2	

.16 15 2003 :

：

：

.1

.2

.3

.4

(27)

:(27)

	30000	15000	
	1.6	1.2	
	4	-	()
2 25	0.1	0.05	2
	/ 25000	/ 15000	

.16 2003 :

: **10.4**

:

(451 1998)

.

: **11.4**

.

:(475 1998)

. -1

. -2

:(476 1998)

. .1

. 200 .2

	100	.3
. 20		
		.4
.		
.(246 2002) 50		
:		12.4
:		
		.1
.		
		.2
.		
		.3
.		
:		
. 60		.1
.		.2
.		.3

. 4.

()

1998)

.(370

1.5

2.5

3.5

4.5

5.5

6.5

7.5

8.5

9.5

.

: **1.5**

: **1.1.5**

.

.

.(25)

(28)

.

:(28)

7	5	6	2	4	3	9	
1996	2006	2001	2001	2004	2004	1986	
2 250	2 550	2 300	2 400	2 300	2 500	2 1000	
2 100	2 55	2 45	2 90	2 80	2 160	2 160	
2 25	2 18	2 25	2 22	2 20	2 40	2 20	
50	41	40	60	60	32	60	
2	2	1	2	2	1	2	
2	2	1	2	2	1	2	
3	3	2	4	3	4	3	
2 5	2 13.4	2 7.5	2 6.7	2 5	2 15.6	2 16.7	
2 2	2 1.3	2 1.1	2 1.5	2 1.3	2 4.7	2 1.7	
2 1	2 0.88	2 0.63	2 0.73	2 0.7	1.25 2	2 0.7	
25	20	40	30	30	32	30	
1	1	1	1	1	1	1	
1970	1965	1970	1966	1985	1968	1985	

2.1.5 :

.()

.(29)

(29)

(16)

(15)



:(3)

:(29)

1998 م	2004 م	2005 م	2000 م	2004 م	
إناث	ذكور	مختلط	مختلط	ذكور	
8 - 4	8 - 5	5 - 1	4 - 1	5 - 1	
البطة	المشماس الغربي	الجلمة الشرقية	البطة	المشماس الغربي	
7	6	3	7	6	
2م 2150	2م 2000	2م 4250	2م 1350	2م 2750	
2م 575	2م 375	2م 544	2م 580	2م 640	
% 27	% 19	% 13	% 43	% 23	
13	9	12	9	9	
2م 30	2م 42	2م 50	2م 25	2م 50	
535	400	430	320	380	
2م 4.02	2م 5	2م 9.9	2م 4.2	2م 7.2	
2م 1.17	2م 0.94	2م 1.3	2م 1.8	2م 1.7	
2م 0.73	2م 0.95	2م 1.40	2م 0.7	2م 1.2	
41.2	44.4	35.8	35.6	42.2	
20	14	18	12	12	
2	2	3	1	2	
1996	1985	2005	1965	2004/1955	
حكومي	حكومي	حكومي	حكومي	حكومي	
فرعي	فرعي	فرعي	فرعي	فرعي	

:

: 3.1.5

.(30)

(30)

(17)

:(30)

- 9	- 8	
1955	1947	
7	6	
2 3175	2 3000	
2 580	2 760	
% 18	% 25	
16	15	
2 36	2 35	
530	540	
2 5.99	2 5.6	
2 1.09	2 1.4	
2 1.09	2 0.97	
33.1	36	
23	22	

3	3	
1998 / 1984	2002 / 1977	

. :

.(31)

. :**(31)**

2 1.84	2 9.6	2 630	*2 3300	343	12	
2 1.6	2 7.4	2 1764	2 8350	1129	30	
2 1.02	2 4.48	2 950	2 4150	927	22	
2 1.30	2 5.97	2 1340	2 6175	1034	31	
		2 4684	2 21975	3433	95	

.

*

.

(6 – 1)

(12 – 10)

(9 – 7)

2006

(32)

2006

:(32)

*	*					
2 3	2 10	2 1000	2 3500	343	14	
2 3.8	2 15.5	2 3112	2 12695	819	21	(6-1)
2 3.8	2 15.4	2 3067	2 12509	807	21	(6-1)
2 3.85	2 15.4	2 1632	2 6530	424	10	(9-7)
2 3.85	15.4	2 1463	2 5852	380	9	(9-7)
2 3.85	15.4	2 1143	2 4574	297	7	(12-10)
2 3.85	15.4	2 1398	2 5590	363	9	(12-10)
-	-	2 12815	2 51250	3433	91	

*

*

2.5

:

:

2 300

:

.1

(2.5 - 8)

.(33)

:(33)

	1	
/	1	
/	1	
	1	
	1	
	1	
	1	
	1	
	1	
	1	
	1	

(18)

2006 9999

3487 / : .2

(34)

:(34)

2006	1992	2005	1995	
1	1	1	1	
2 90	2 40	2 35	2 38	
4	1	1	1	
-				
1400-0800 2000-1700	2200-0900	2200-0900	2200-0900	

(35) (11) :

:(35)

/			
1743 /	2 475	6	
3488 /	2 250	3	
* 2406 /	2 170	2	
** 2859 /	2 80	1	

15 *

15 **

(19)

(2 1393)

(% 13.3)



:(4)

3.5

2 300

()

(36)

2 1930

:(36)

7	9	6	3	1	8	
1998	2006	2004	2000	1961	1990	
1998	2006	2005	2002	1963	1993	
-	-	-	-			
2 60	2 370	2 260	2 340	2 300	2 600	
1	2	2	1	2	2	
-	-	-	-	1	2	

(2 2306)



:(5)

: 4.5

(3)

2003 (2 2000)



:(6)

: 5.5

(125)

(37)

:(37)

10		1
9		2
9		3
15		4
17		5
15		6
24		7
18		8
8		9

: 6.5

(38)

:(38)

1997	1994	2000	2001	
5	8	5	1	
400	74	60	80	
400	220	90	200	

1996

210

(2 84)

2005

() 3

% 24

: 7.5

.(39)

:(39)

7	
1997	
2 450	
2 3000	
5	
12	
2	

.....

: 8.5

2 15920

2 2120

(40)

:(40)

0	0	2 750	1		*1
0	0	2 750	1		*2
0	0	2 170	1		*
0	0	2 450	2		*
0	0	2 3000	7		
50	0	2 3500	10		
50	20	2 3000	3		1
50	50	2 2000	3		2
0	0	2 300	8		1
30	15	2 1000	7		2
30	15	2 1000	7		

2 13800 ()

: 9.5

.(41)

:(41)

2000	2001	
950	1562	2006
767	1562	2006

1.6

1.1.6

2.1.6

3.1.6

4.1.6

5.1.6

6.1.6

2.6

3.6

4.6

5.6

1.5.6

2.5.6

3.5.6

4.5.6

5.5.6

: **1.6**

(5)

:

$$(\quad * \quad) =$$

()

$$.4.75 = ((0.25*3)+(0.5*5)+(0.25*6))$$

. (42)

:(42)

300		
600		
1000		
1400		
500		
500		
500		
500		
200		
500	/	
60		

1.1.6

:

:

:

(3)

.(43)

:(43)

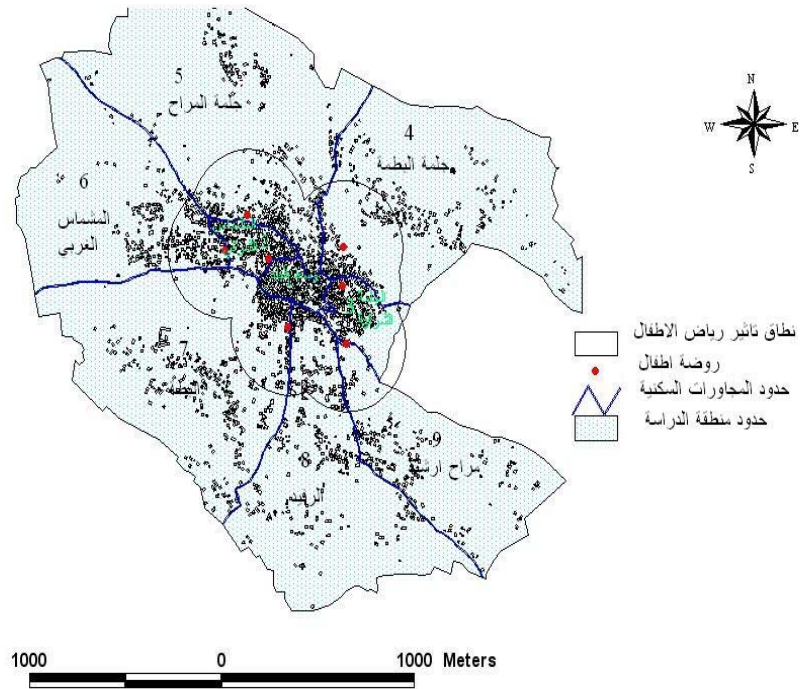
*	
6	
6	
6	
4.7	
4.7	
5	
4.7	
4.5	
4.2	

6

(6 – 0)

*

(3) :



: :

(5) (4)

.(44)

:(44)

*	*	
2.7	3.5	
2.8	4	
4	4	
3.3	3.3	
2	3	
3	3.3	
3.6	3.6	
2	2	
2.5	2.5	

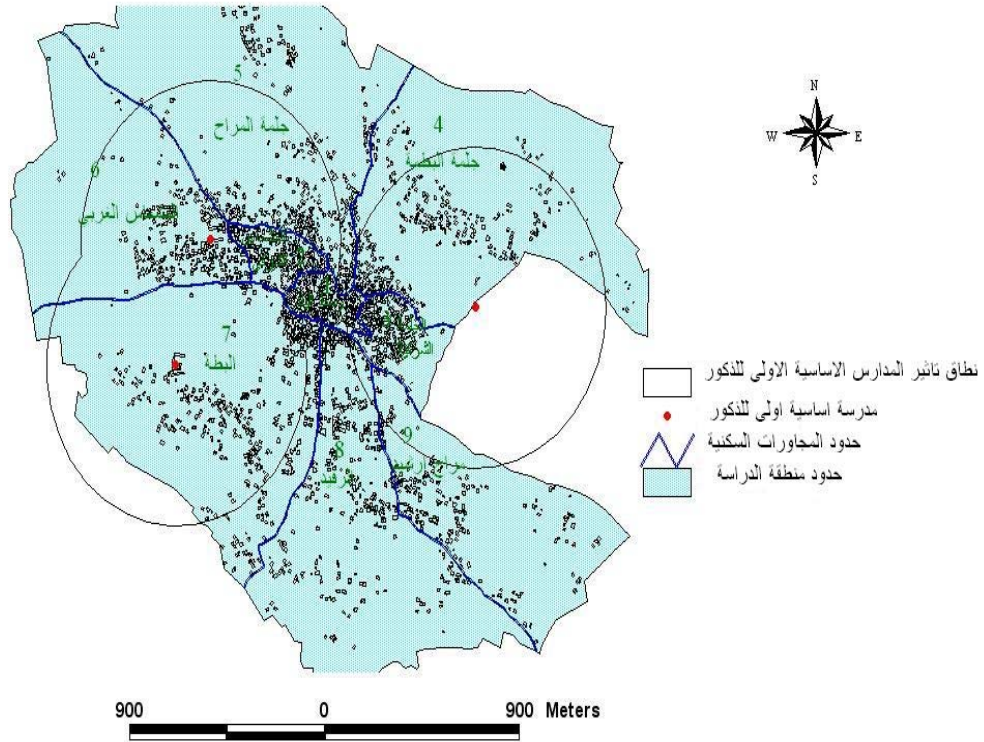
*

6

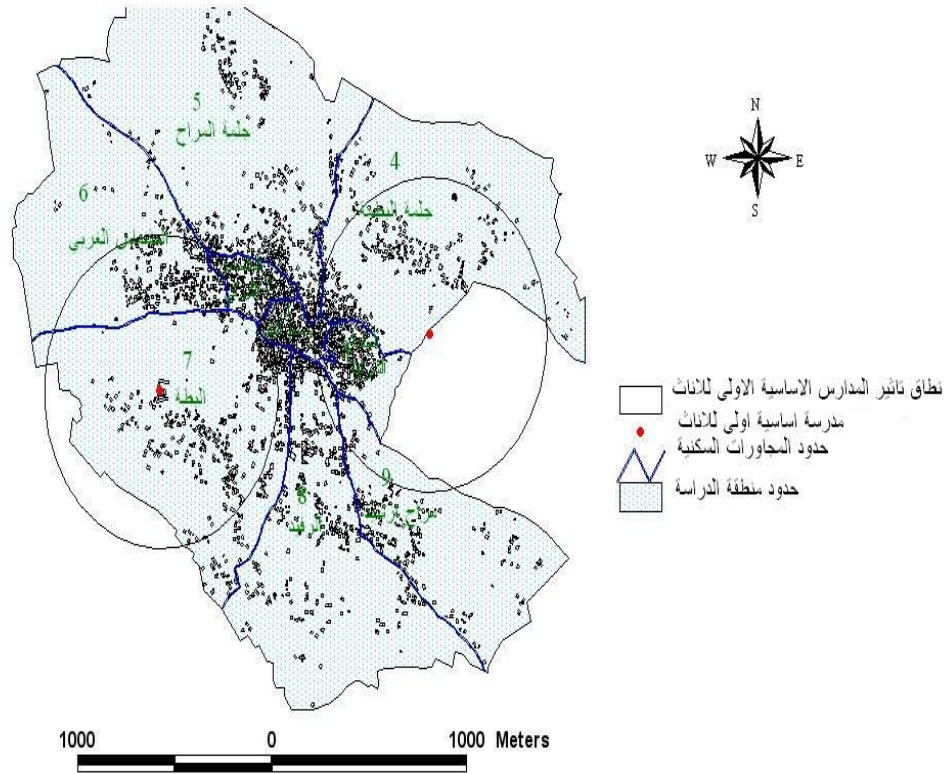
(6 – 0)

*

: (4)



(5):



: :

(9) (8) (7) (6)

.(45)

:(45)

*				
	*	*	*	
4	4	4	4	
4	4	4	4	
4	4	2.8	3.3	
2.8	3.2	2.2	2.7	
3.9	4	2.9	4	
4	4	3.8	4	
4	4	4	3.9	
3.6	3	3	2.7	
2.8	2.7	2.2	2.2	

6 (6 – 0) *

.(46)

:(46)

*	
4.03	
4.1	
4.02	
3.17	
3.5	
3.87	
3.97	
2.97	
2.73	

*

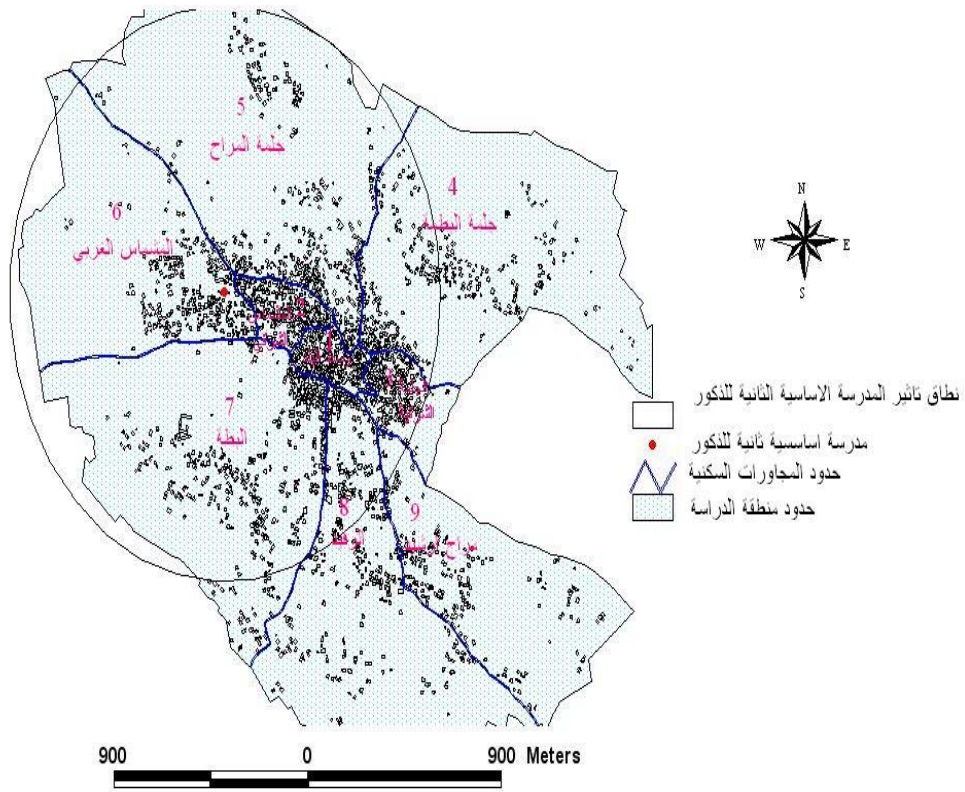
.7

6

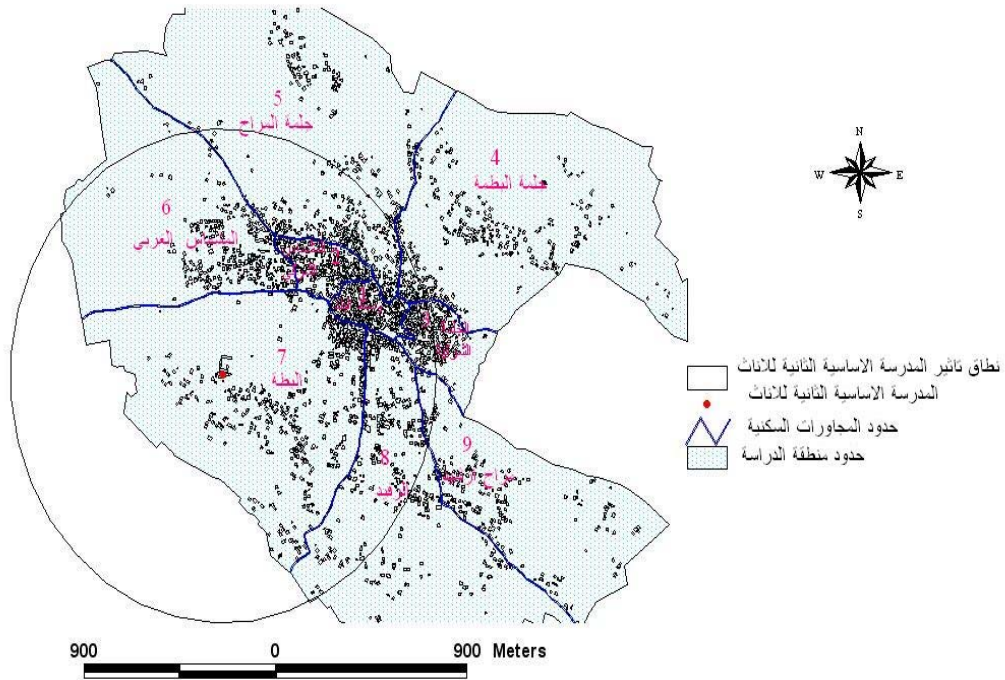
(6 – 0)

*

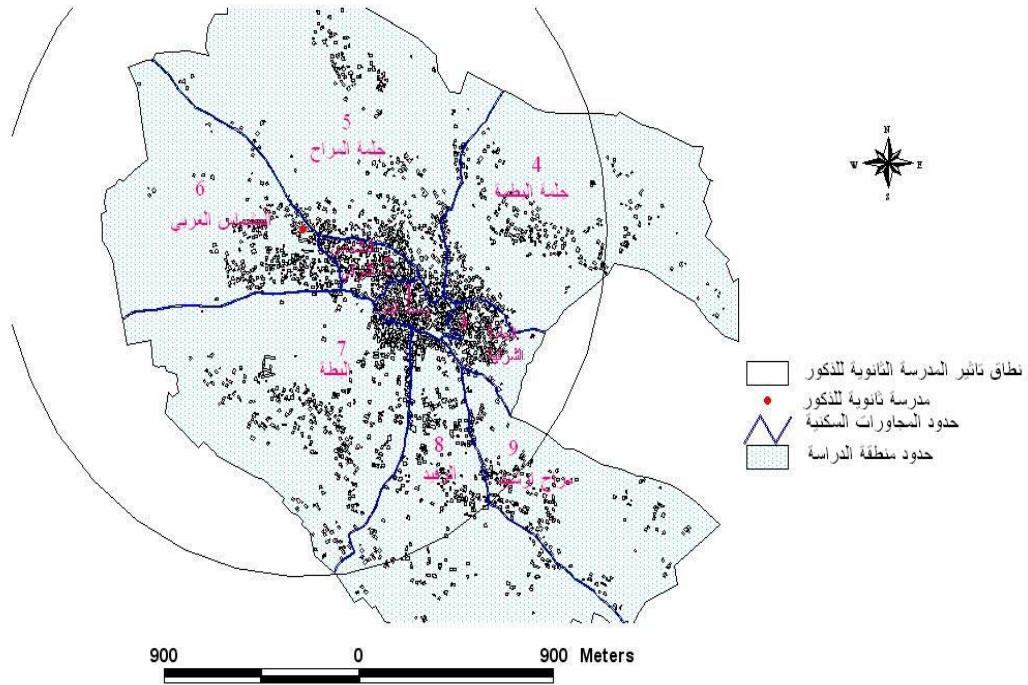
:(6)



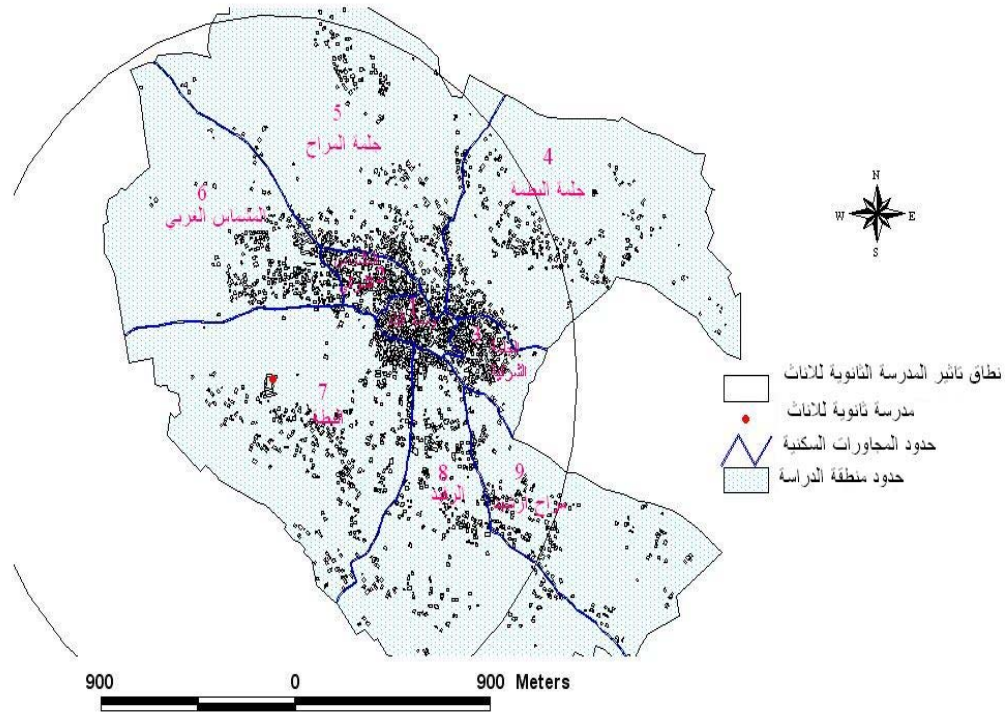
(7):



: (8)



: (9)



: 2.1.6

(11) (10)

.(47)

:(47)

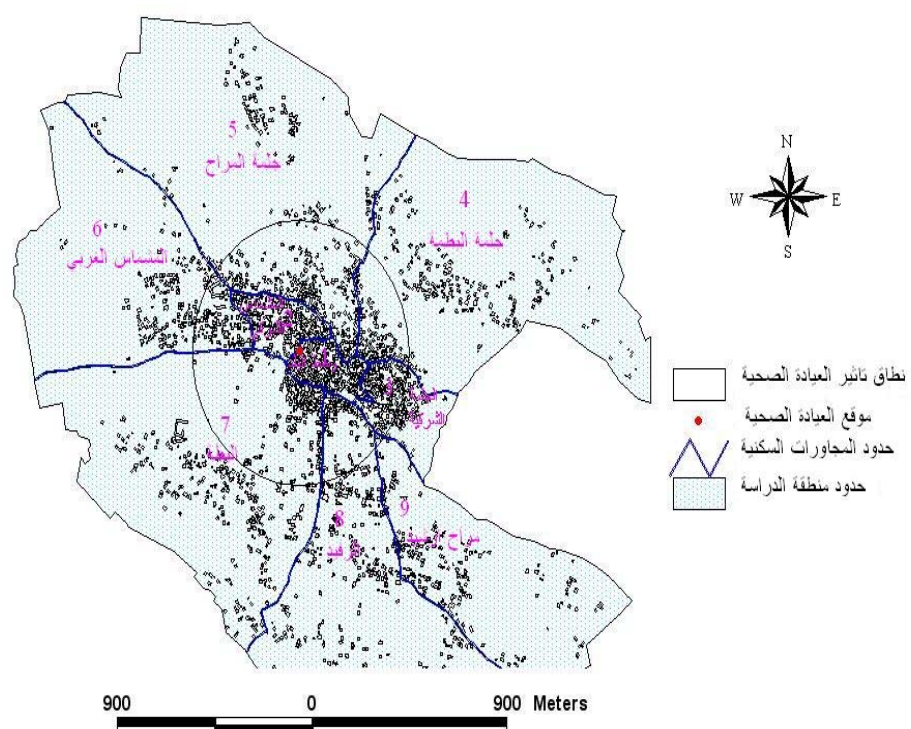
*	*	*	*	
5.3	6	6	4	
5.3	6	6	4	
4.8	5.5	6	3	
3.5	4.3	4.3	1.9	
3.5	4.2	4.2	2	
3.4	4.1	4.1	1.9	
4.3	5	5.4	2.4	
3.5	4.2	4.4	1.8	
3.1	3.8	4.1	1.5	

6

(6 – 0)

*

خارطة رقم (10): نطاق تأثير العيادة الصحية



•p



:()

3.1.6

(12)

.(48)

:(48)

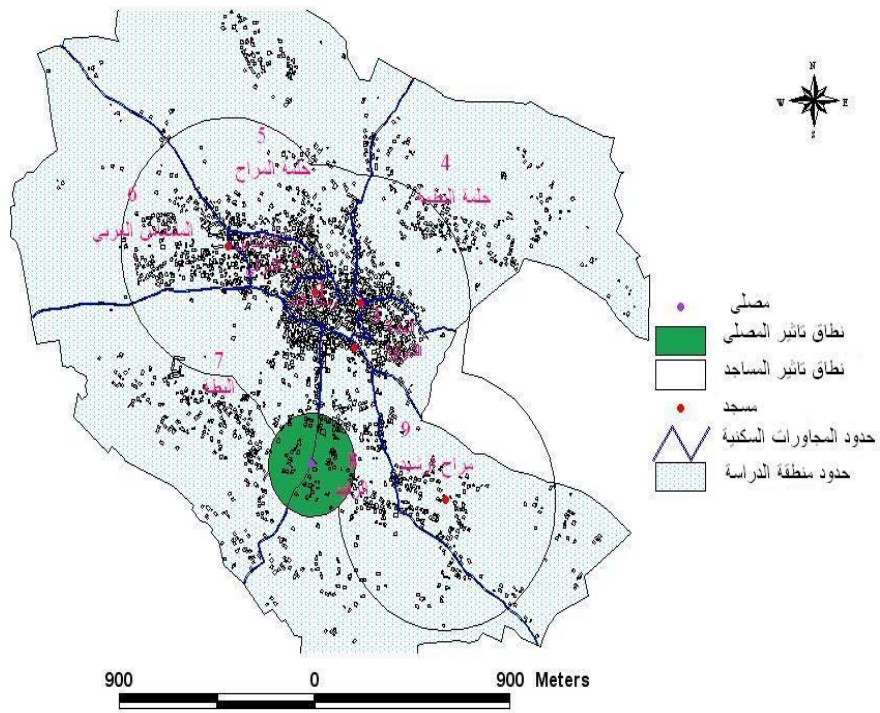
*	
6	
6	
6	
4.9	
4.9	
5.1	
5	
5.6	
5.7	

6

(6 – 0)

*

خارطة رقم (12): نطاق تأثير المساجد



: 4.1.6

(13)

.(49)

:(49)

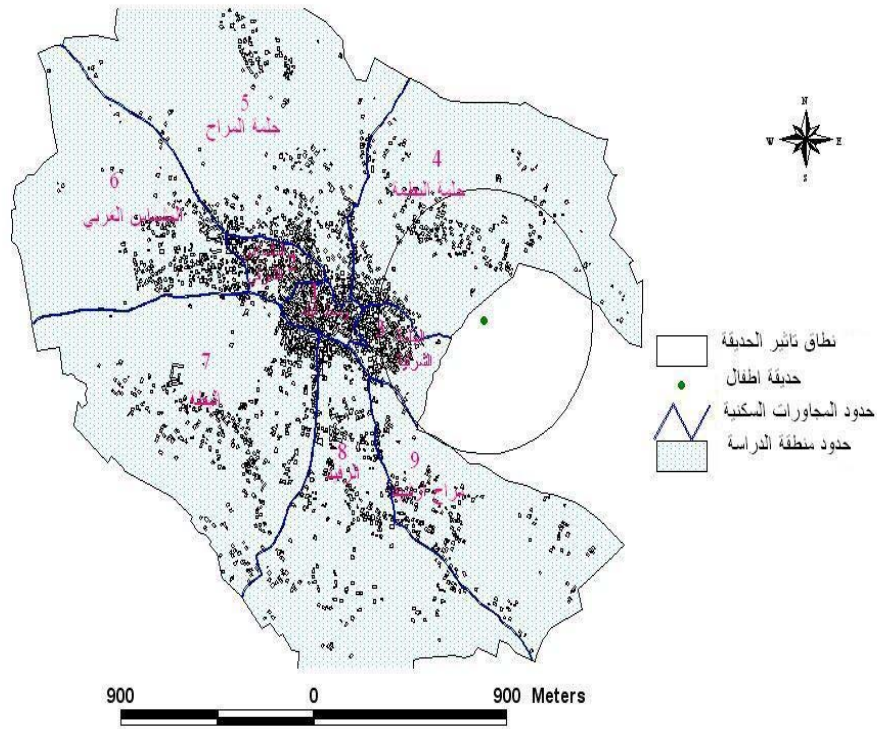
*	
2	
1.5	
3.3	
2.5	
1.2	
1	
1.1	
1.3	
1.8	

6

(6 – 0)

*

خارطة رقم (13) : نطاق تأثير الحدائق



5.1.6 :

(14)

.(50)

:(50)

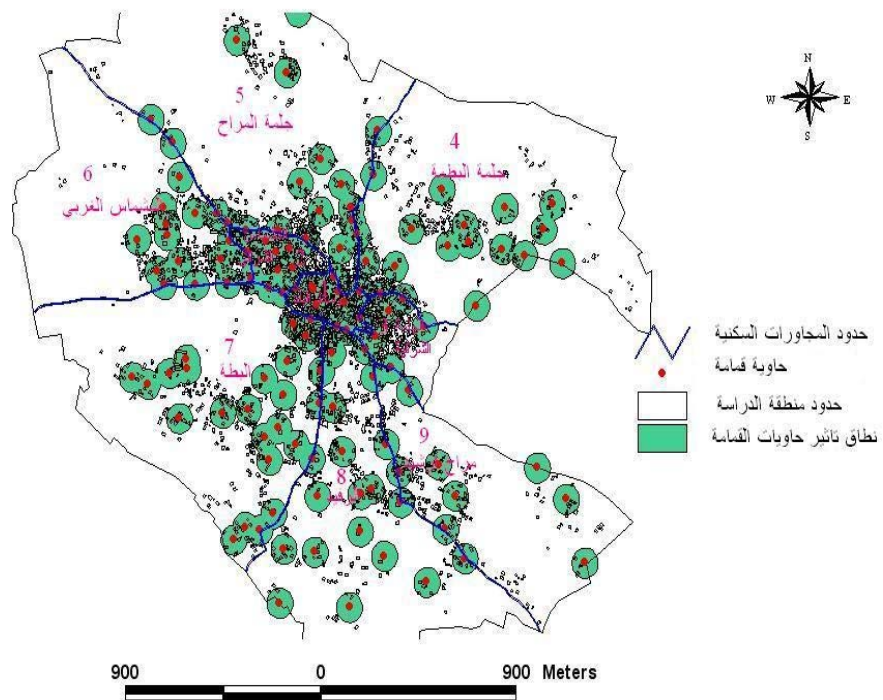
*	
6	
5.8	
5.5	
5.5	
5.4	
5.5	
5.5	
5.6	
5	

6

(6 – 0)

*

خارطة رقم (14) : نطاق تأثير خدمات النظافة (حاويات القمامة)



6.1.6 :

(6)

% 100

.(51)

:(51)

*	()	
4.6	% 70	
2.6	% 39	
2.4	% 36	
4	% 60	
3.8	% 57	
3.2	% 47	
4.4	% 67	
4.6	% 71	
4.4	% 68	

6

(6 – 0)

*

:

2.6

(4)

:

(52)

:(52)

			/)	*		
		/				
0.53	3.5	3.26	2.12	7.04	183	
0.44	3.41	3.94	2.63	8.03	273	
0.45	4.68	2.31	1.75	7.32	249	
0.29	3.76	0.39	2.18	7.5	345	
0.36	3.59	0.38	1.99	6.61	390	
0.21	3.66	0.55	2.34	7.49	352	
0.31	4.27	0.39	1.53	6.2	341	
0.31	3.84	0.51	2.17	7.69	377	
0.26	7.03	0.41	1.83	6.73	202	

*

(52)

.(53)

(4)

:(53)

*	*	*	*	*	*	*	
4.08	5.41	3.00	4.35	4.24	5.54	2.44	
4.59	4.51	2.82	5.26	5.26	6.00	3.66	
4.21	4.62	5.36	3.08	3.50	5.32	3.34	
3.58	3.00	3.52	0.53	4.36	5.50	4.61	
3.54	3.72	3.20	0.51	4.00	4.61	5.20	
3.51	2.21	3.22	0.74	4.68	5.49	4.70	
3.35	3.21	4.54	0.53	3.06	4.20	4.55	
3.77	3.21	3.68	0.69	4.34	5.69	5.04	
3.08	2.74	4.06	0.55	3.66	4.73	2.70	

.6 – 0

•

:

3.6

(2.35)

.(54)

:(54)

	**	*	
3.05	2.12	4.67	
2.85	1.72	4.54	
2.80	1.68	4.72	
2.42	2.00	3.91	
2.40	1.96	3.70	
2.52	1.84	3.77	
2.74	2.08	3.97	
2.46	2.12	3.79	
2.30	2.08	3.57	

6

(6 – 0)

-

*

.5

**

.5

(53)

(3)

.(55)

:(55)

	*		*		
3	4.08	2	4.67		1
1	4.59	3	4.54		2
2	4.21	1	4.72		3
5	3.58	5	3.91		4
6	3.54	8	3.70		5
7	3.51	7	3.77		6
8	3.35	4	3.97		7
4	3.77	6	3.79		8
9	3.08	9	3.57		9

6

(6 – 0)

*

)

() ()

.(56)

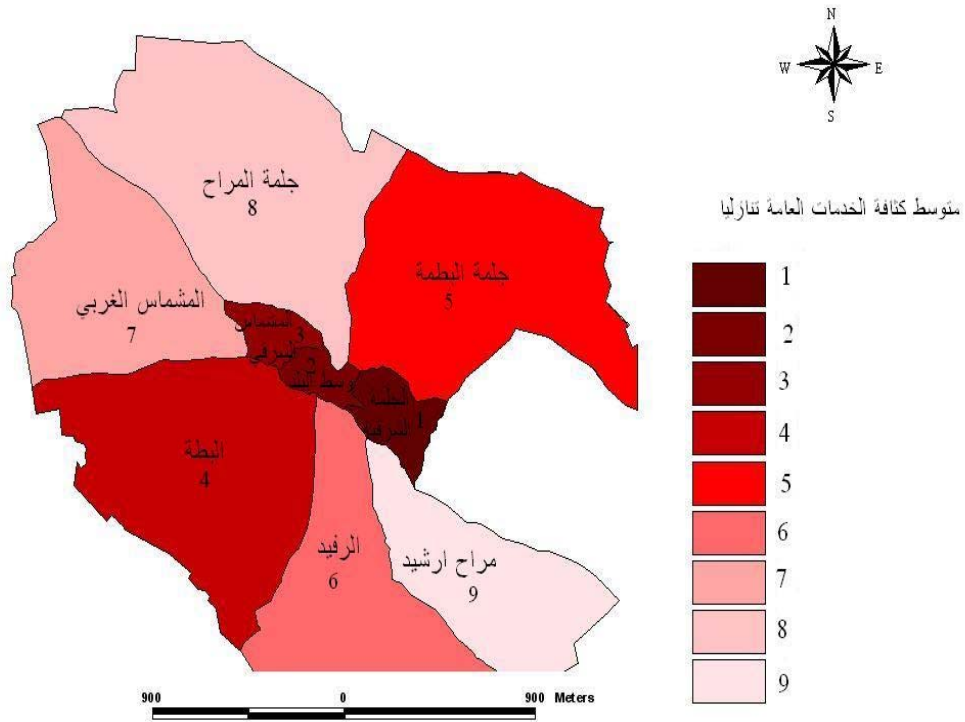
:(56)

2-	8		1
2-	2		2
2-	5		3
0	4		4
0	6		5
0	9		6
1	1		7
1	3		8
4	7		9

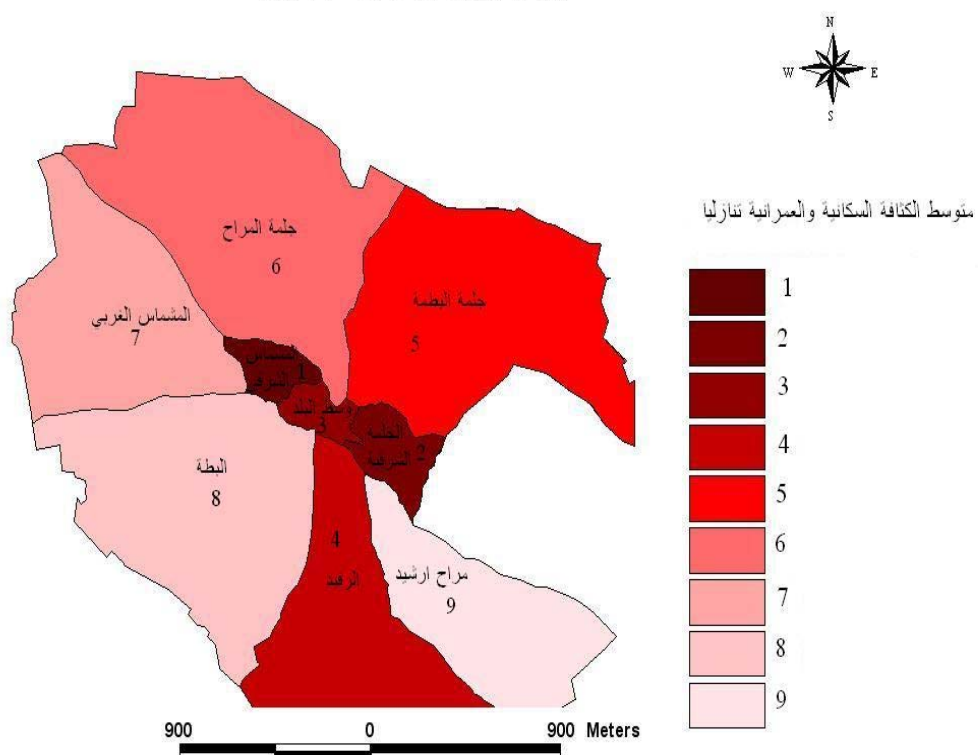
(15)

(16)

خارطة رقم (15): تبين توزيع متوسط الكثافة للخدمات العامة بين المجاورات السكنية لمنطقة الدراسة



خارطة رقم (16): تبين توزيع متوسط الكثافة السكانية والعمراية
بين المجاورات السكنية لمنطقة الدراسة



: **4.6**

" : **-1**

t	T-test	" 0.05
0.05	0.004	2-tailed Sig
		-3.971

"

" 0.05
(0.003) (0.857)

" : **- 2**

t	T-test	" 0.05
	0.332	2-tailed Sig
		1.032
		0.05
(0.616)		
		(0.077)

" : **- 3**

t	T-test	" 0.05	
0.103	2-tailed Sig	-1.842	
		0.05	
(0.831)			
		(0.077)	
	.		
"	:		- 4

t	T-test	" 0.05	
0.05	2-tailed Sig	-12.936	
0.000			
"			
		" 0.05	
	(0.056)	(0.655)	
	.		
"	:		- 5

t	T-test	" 0.05
0.05	0.000 2-tailed Sig	8.089
"		

" 0.05
(0.369) (0.341)

: - 6

"

()

t	T-test	" 0.05
0.000	2-tailed Sig	-16.823
		0.05
		"

"0.05
(0.019) (0.754)

: 5.6

: 1.5.6

% 55.8

42.16 (57)

% 63.7

1000 1.58

:(57)

	1000				
% 7.7	% 23.1	1.58	% 38.4	52.08	
% 11.8	% 47.1	1.32	% 38.2	50.00	
% 2.9	% 26.5	1.47	% 52.9	44.71	
% 10.9	% 41.3	1.35	5 32.6	45.59	
% 8.5	% 49.2	1.27	% 35.6	47.81	
% 6.4	% 42.6	1.26	% 48.9	46.15	
% 5.4	% 29.1	1.31	% 63.7	42.16	
% 6.1	% 28.6	1.45	% 61.3	46.69	
% 3.3	% 30	1.23	% 53.2	45.57	

: 2.5.6

% 61.3

% 7.4

% 10.5

(58)

% 6.8

:(58)

* 1991					
% 7.7	% 23	% 26.9	% 61.5	% 11.5	
% 11.8	% 59	% 5.9	% 35.3	% 2.9	
% 32.4	% 69	% 5.9	% 50		
% 37.0	% 33	% 4.3	% 30.5	% 2.2	
% 37.3	% 68	% 8.3	% 35.6	% 5.1	
% 33.3	% 47	% 2.1	% 27.7		
% 65.5	% 64	% 1.8	% 34.5	% 1.8	
% 36.7	% 63	% 16.3	% 26.5	% 4.1	
% 53.3	% 60	% 6.7	% 56.7		

1991

*

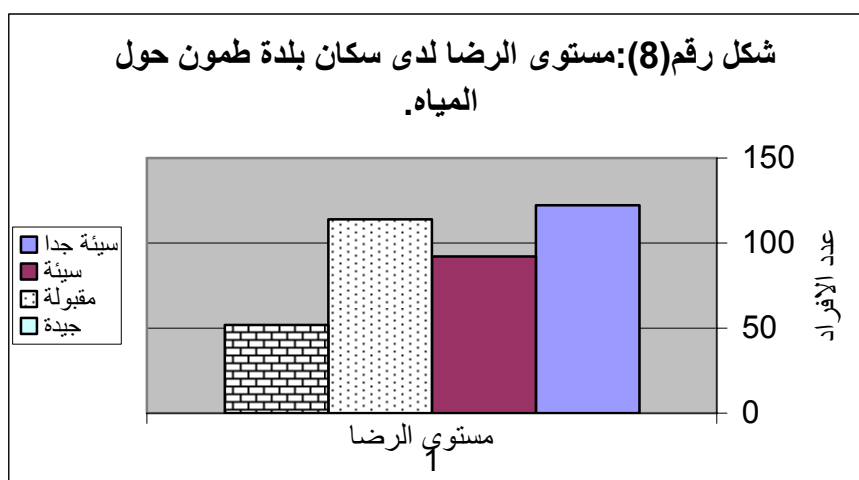
3.5.6

:

: :

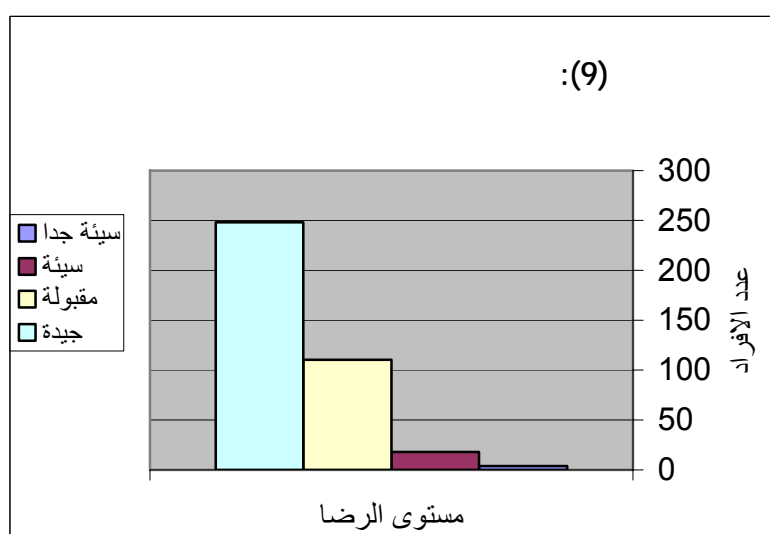
800 . 55 %

(8) .

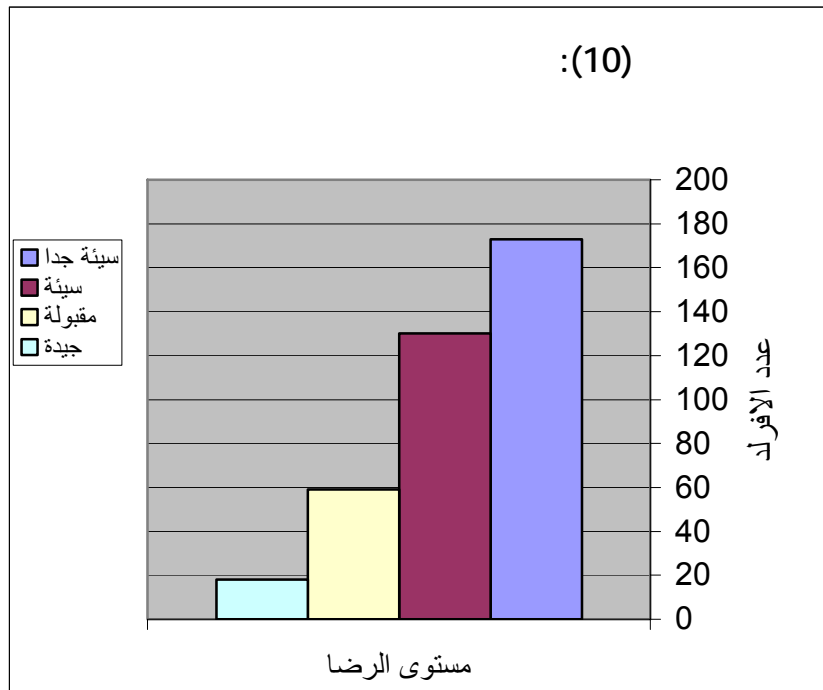


: 95 % :

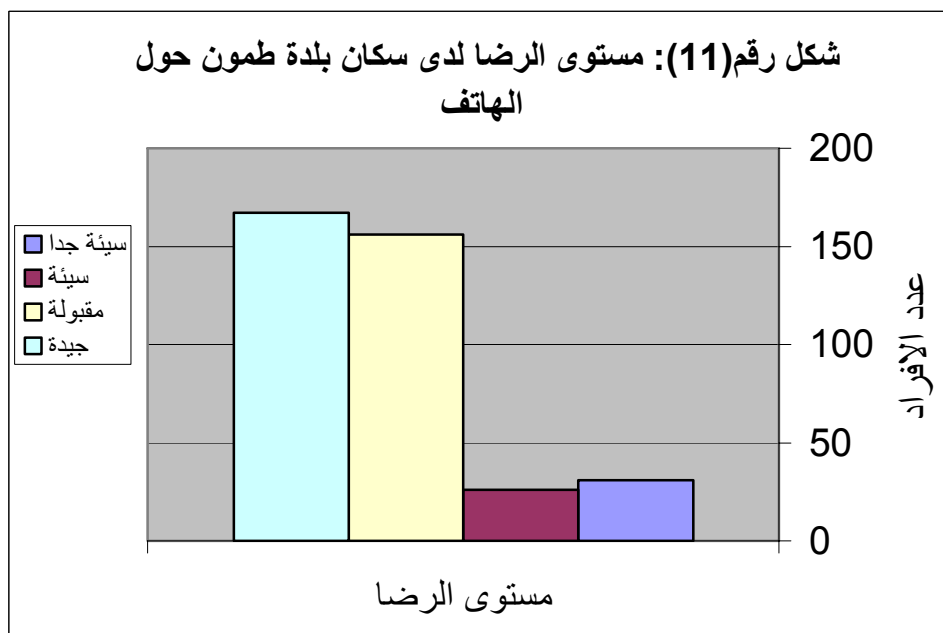
(9) .



250
5
% 80
(10).

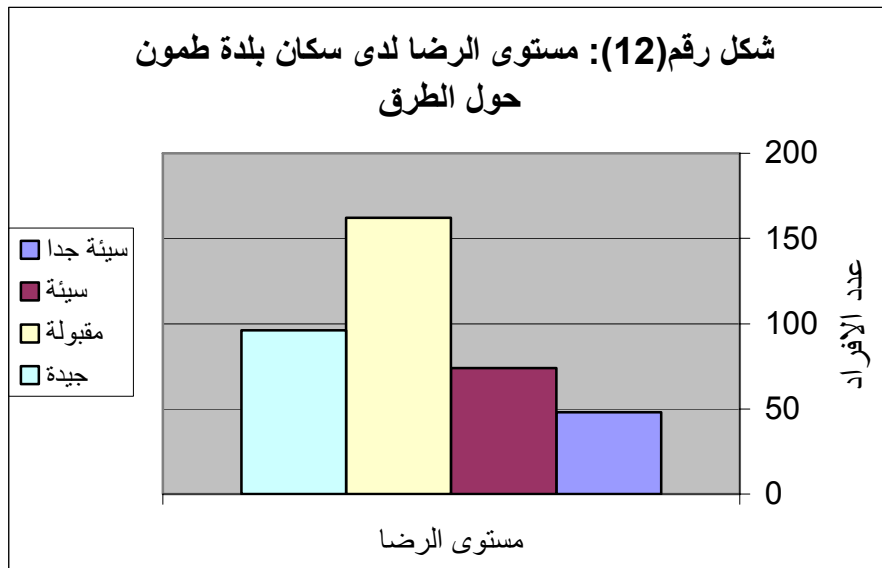


(11).



: : % 68

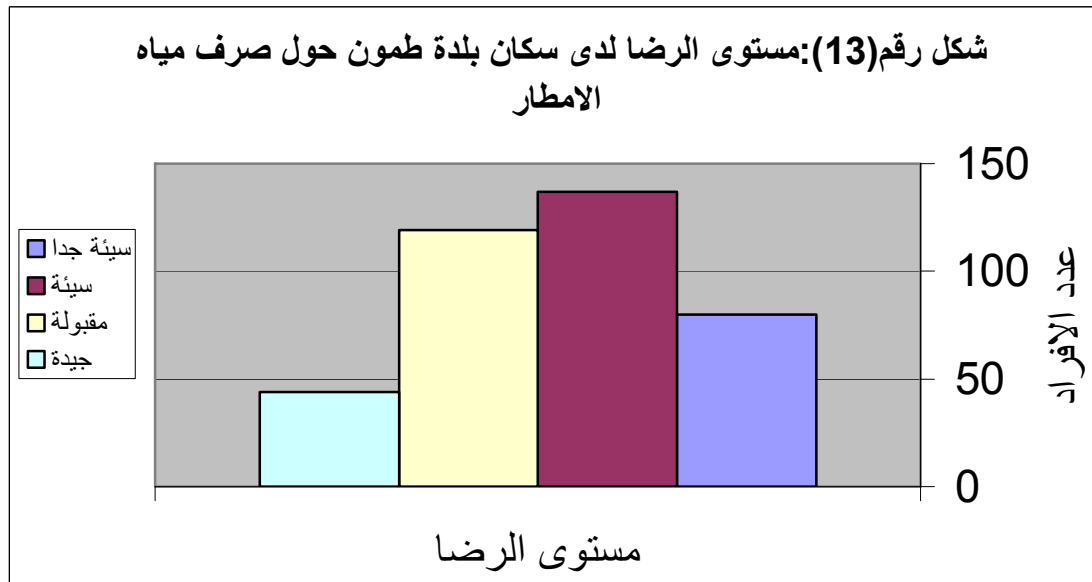
(12).



: :

(13).

% 57



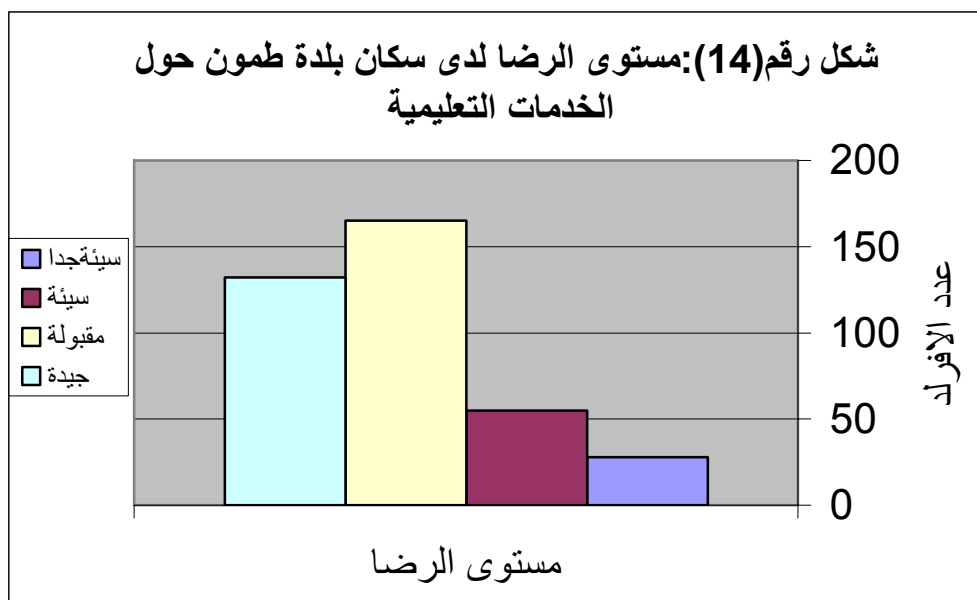
4.5.6

:

% 78 :

:

(14).

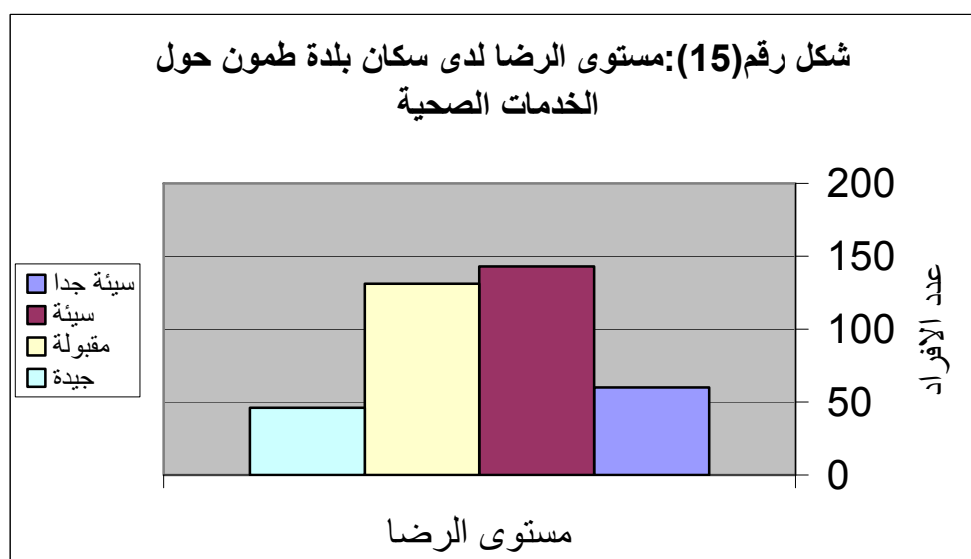


% 58 ::

:

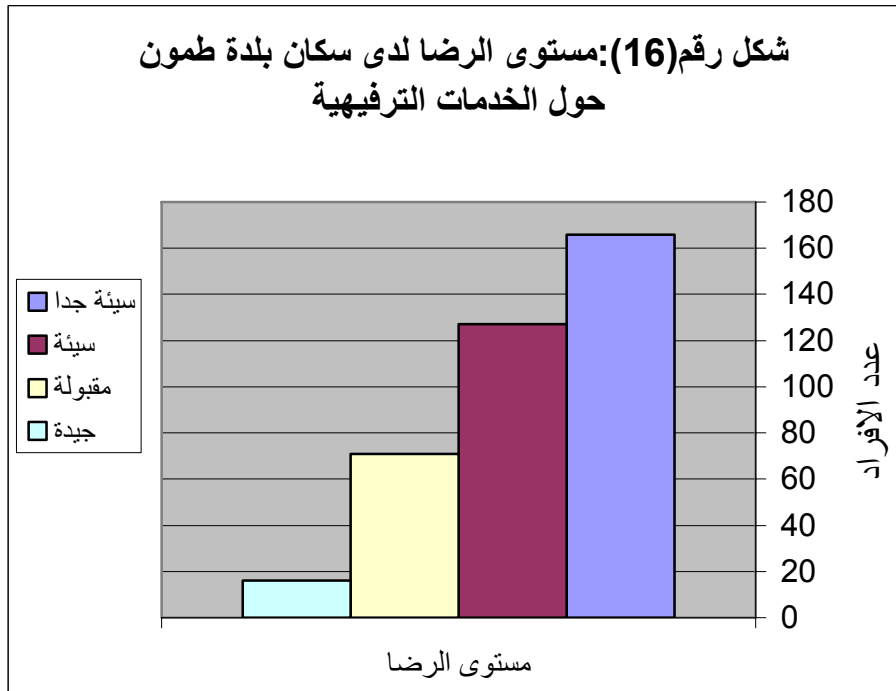
(15).

% 34



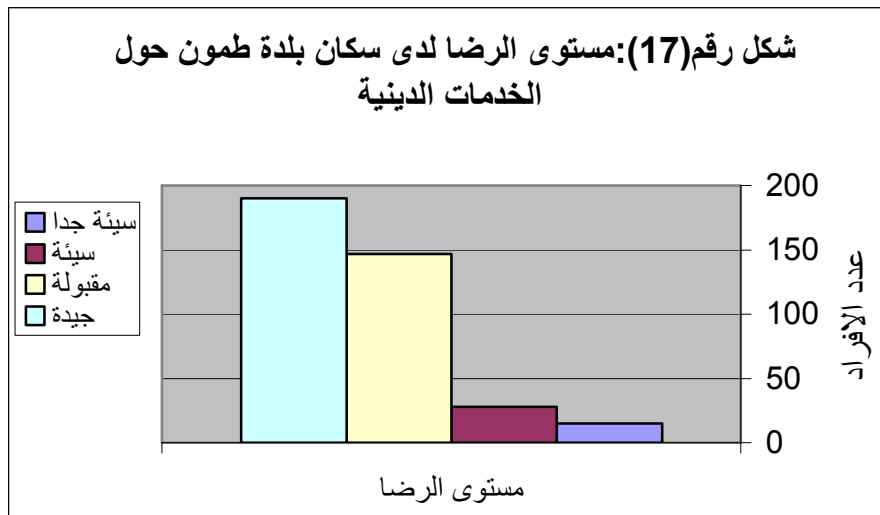
: :: % 77

(16).



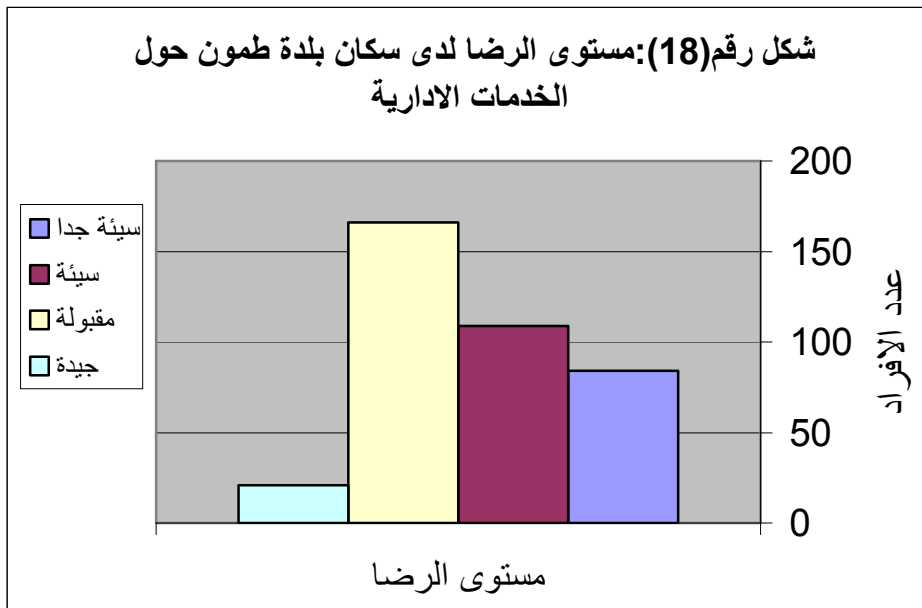
: :: % 89

(17).



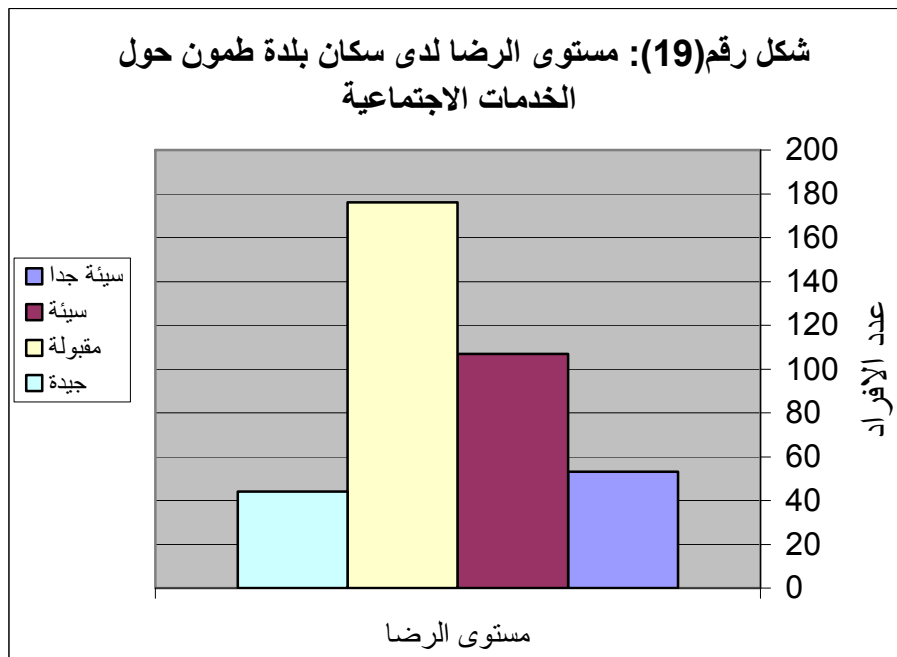
: : % 51

(18).



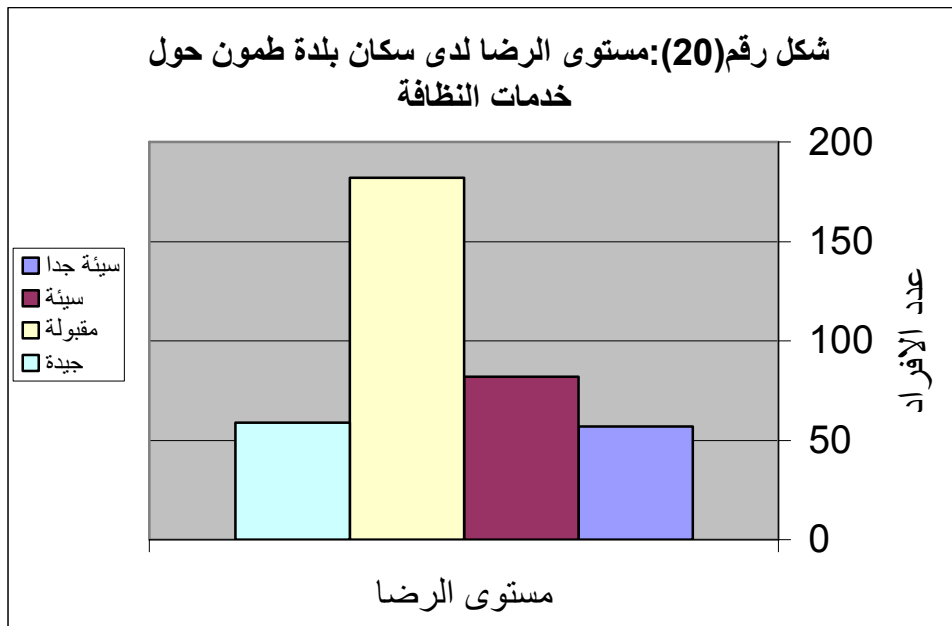
: :: % 58

(19).



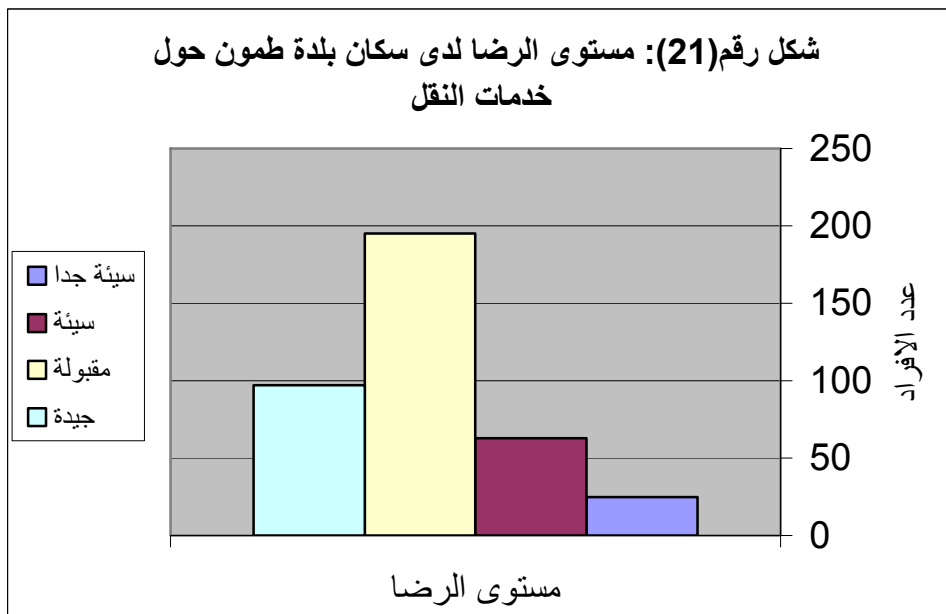
: :: % 63

(20).



: :: % 77

(21).



:

.(59)

:(59)

. 2017

. 2017

(The Goal)

.

:

.

.1

.

.2

.3

.

.

.4

.

.5

.6

.

(60)

.

:(60)

. 2017

*	*		
2 5000	487		
2 12500	1162		
2 12000	1145		
2 6500	602		
2 6000	539		
2 4500	421		
2 5500	515		
2 2000	14846		
2 9000	14846		
-	14846		
-	14846		
-	14846		
2 22250	14846		
2 500	14846		
2 1000	14846		
2 3274	3274		

*

*

*

*

*

2016

• **SWOT :**

:(Strength) •

.1

•

.2

•

.3

•

.4

•

.5

•

: (Weakness) •

.1

•

.2

•

.3

•

.4

•

.5

:(Opportunities)



.6

.7

.1

.2

.3

.4

.5

:(Threatens)



.1

.2

.

.3

.

.4

.

:

:

.1

.

.2

.

.3

.

.4

.

:

:

.1

.

.2

.

.3

.

.4

.

:

:

.1

.

.2

.

.3

.

.4

.

.5

.

:

:

-:

.

•

.

•

.

•

.

•

-
-
-
-
-

(Steering Comity)

: :

()

(61)

:(61)

*		2009–2007	
) (2011–2009	
) (2013–2011	
	+ + ()	2015–2013	
	+ + ()	2017 – 2015	

★

：

．

●

．

●

●

3

．

．

：

：

：

：

.1

(62)

．

:(62)

12	49	2 1000-500	100 - 50	1
12	189	2 1000-500	100 - 50	2
5	76	2 1000-500	100 - 50	3
7		2 1000-500	100 - 50	4
5	199	2 1000-500	100 - 50	5
10	28	2 1000-500	100 - 50	6
7	116	2 1000-500	100 - 50	7

(17)

: 2.

.(63)

:(63)

5	126/125/124	2 4000	400-350	1
7	45/44	2 4000	400-350	2
12	32	2 4000	400-350	3

(18)

.3 :

(64)

:(64)

5	228	2 4000	400 – 350	1
11	168	2 4000	400 – 350	2
12	71	2 5000	450 – 400	3

(19)

.4 :

(65)

:(65)

()

4	59	2 3500	350 – 280	1
7	64/63	2 3500	350 – 280	2

()

(20)

: .5

(66)

:(66)

()

5	228	2 3500	350 – 280	1
12	24/23	2 4000	350 – 280	2

() (21)

: .6

(67)

:(67)

			/	
5	228	2 4500	421	
4	61/60	2 5500	515	

.(32) (13)

: :

(2 600)

(68) 100

:(68)

7		2 600	1	
12	48	2 1400	2	

(22)

(23)

:

(2 550)

(7)

(2 500)

(69)

:(69)

		2		
7		550	1	
12	52	600	2	
7		340	3	
5	228	260	4	
4	51	100	5	
12	199	370	6	
7	28	300	7	
4	87	500	8	()

(24)

: :

(70)

:(70)

11	141	2 2000	1	
5	30	2 2500	2	
5	126/125/124	2 2500	3	
7	118	2 2500	4	

(25)

(71)

:(71)

7	53	2 4500	1
12	10/9	2 4500	2
5	133/129	2 4000	3

(26)

: :

.(61)

: :

(27) . 2 150

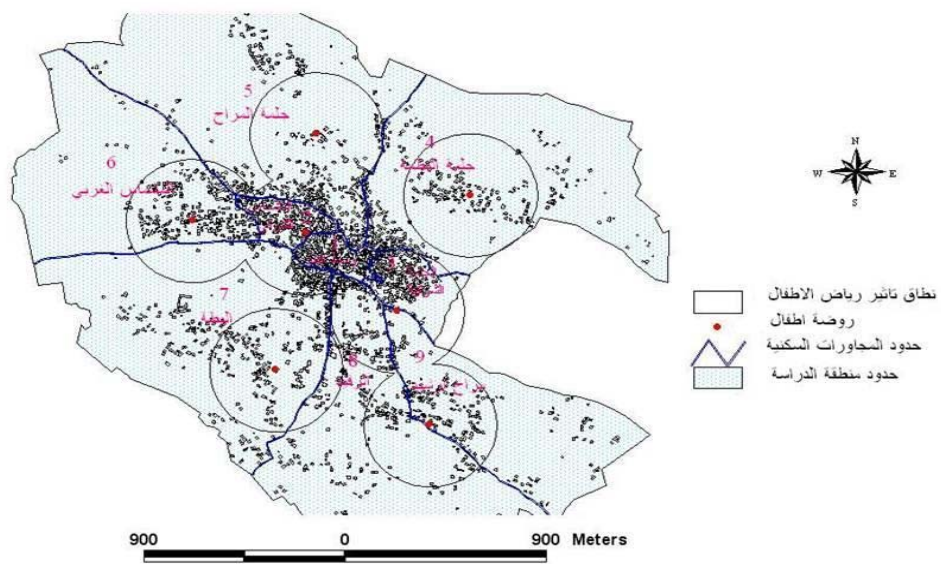
: :

(7 110) 2 1000

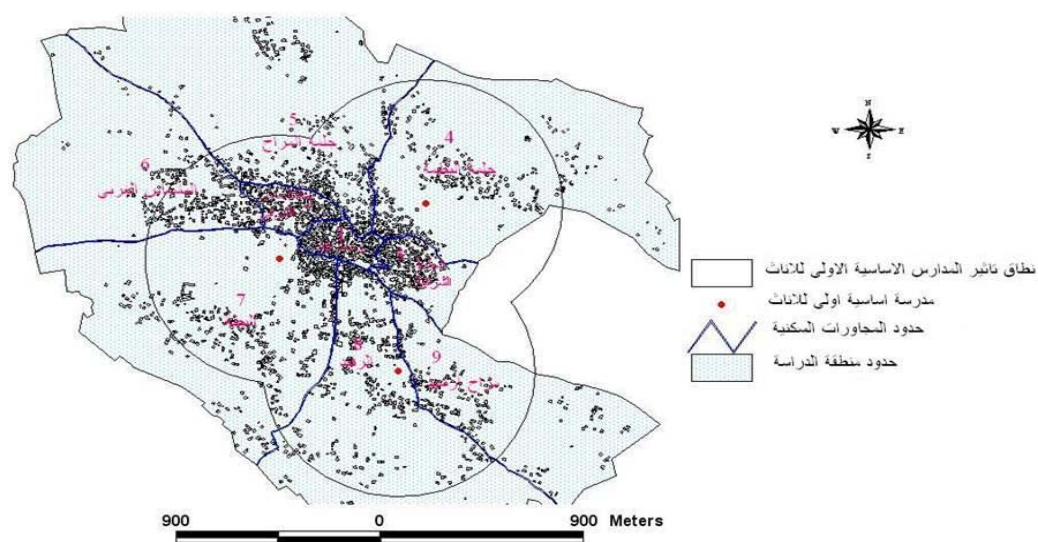
(28) .

.

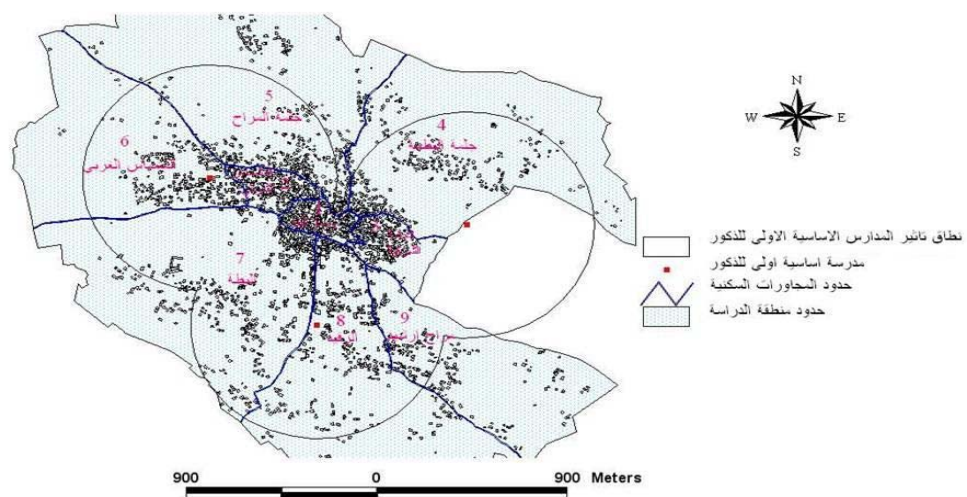
خارطة رقم (17): نطاق تأثير رياض الاطفال حسب التوزيع المقترح



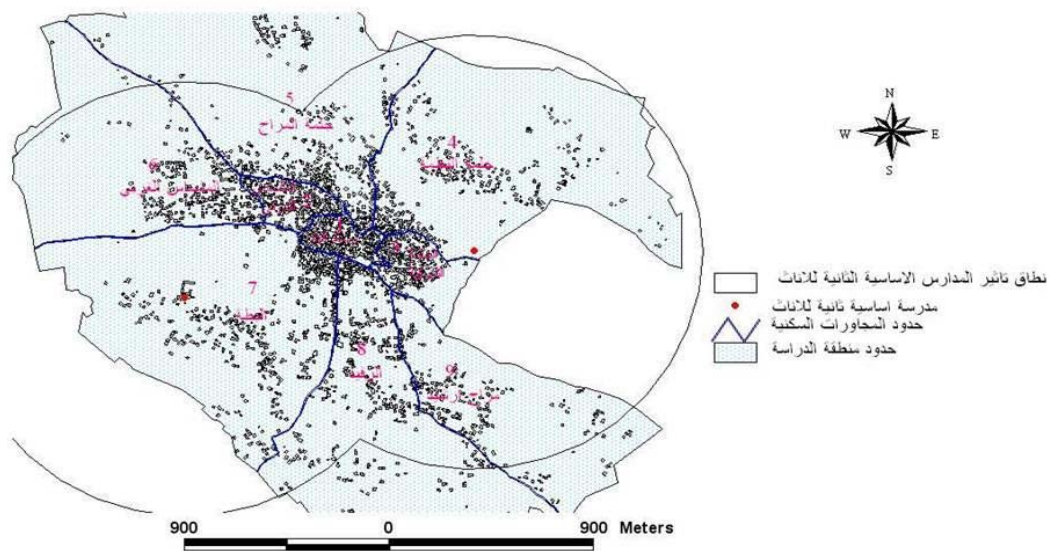
خارطة رقم (18): نطاق تأثير المدارس الاساسية الاولى لثلاثات حسب التوزيع المقترح



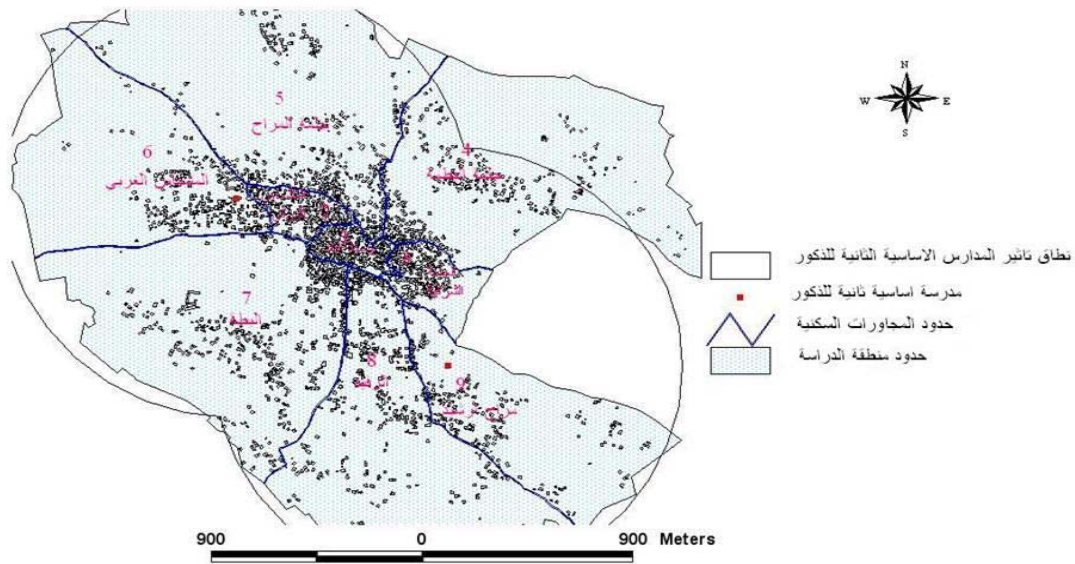
خارطة رقم (19): نطاق تأثير المدارس الاساسية الاولى للذكور حسب التوزيع المقترح



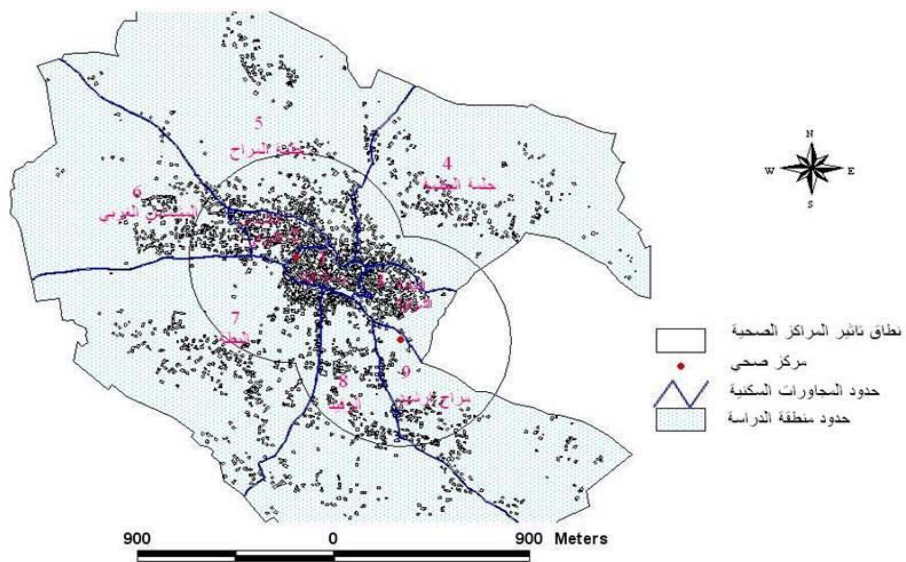
خارطة رقم (20): نطاق تأثير المدارس الاساسية الثانية للاثان حسب التوزيع المقترح



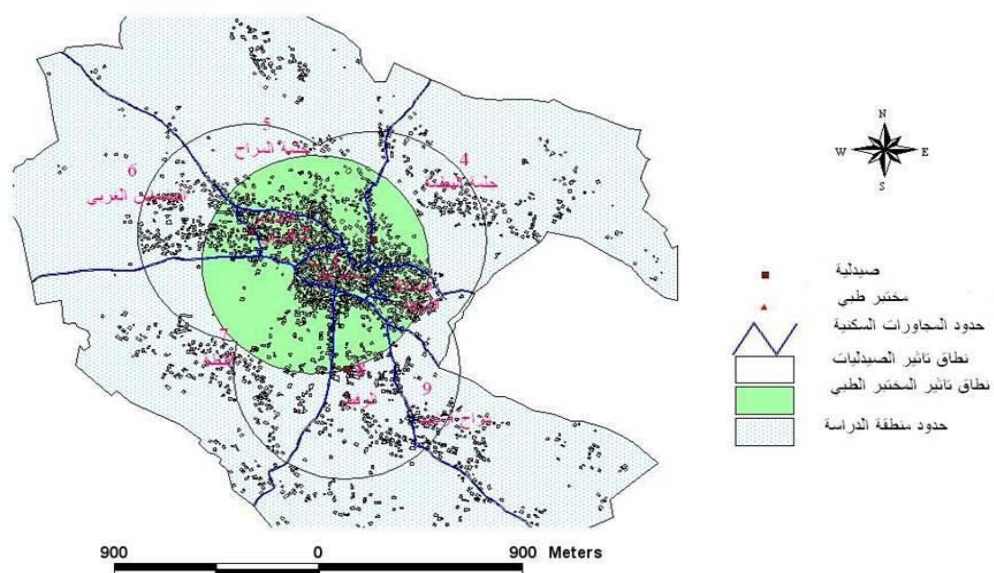
خارطة رقم (21): نطاق تأثير المدارس الأساسية الثانية للذكور حسب التقسيم المقترح



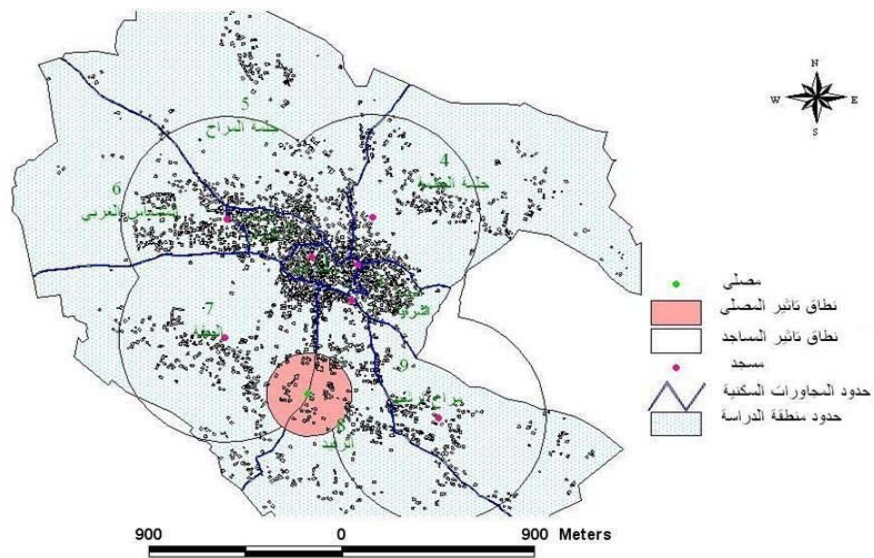
خارطة رقم (22): نطاق تأثير المراكز الصحية حسب التوزيع المقترح



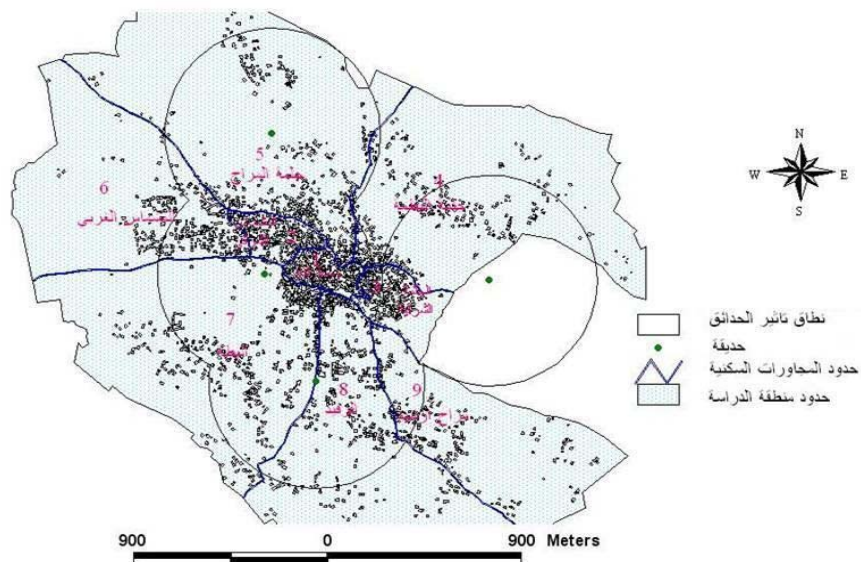
خارطة رقم (23): نطاق تأثير الصيدليات والمختبر الطبي حسب التوزيع المقترح



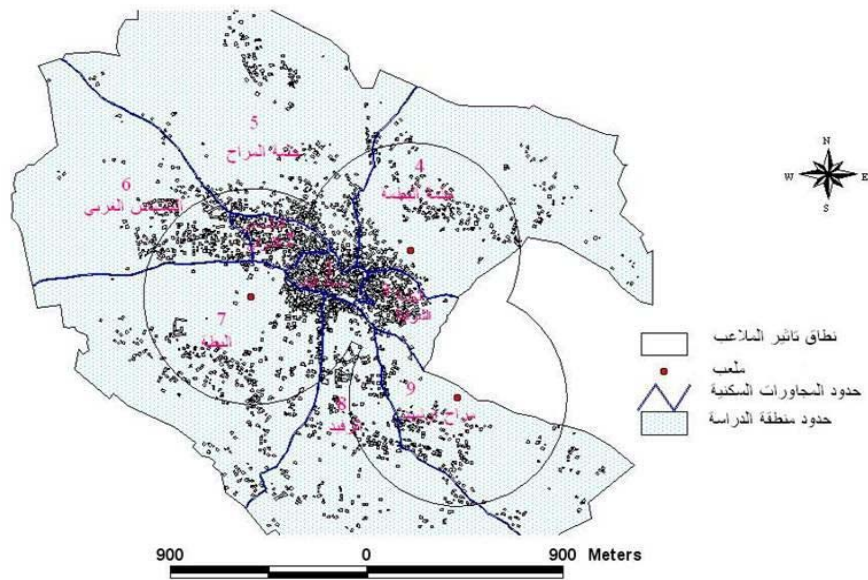
خارطة رقم (24): نطاق تأثير المساجد حسب التوزيع المقترح



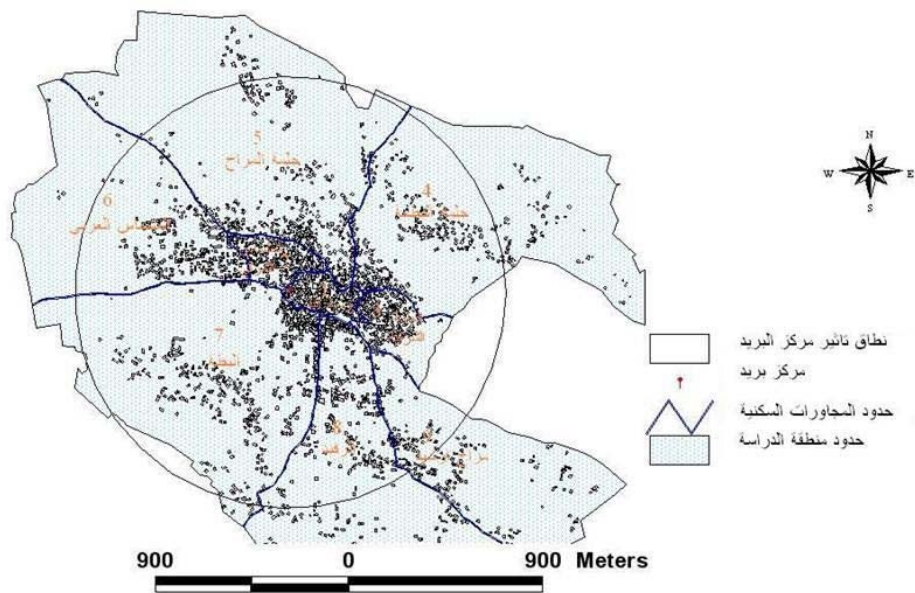
خارطة رقم (25): نطاق تأثير الحدائق حسب التوزيع المقترح



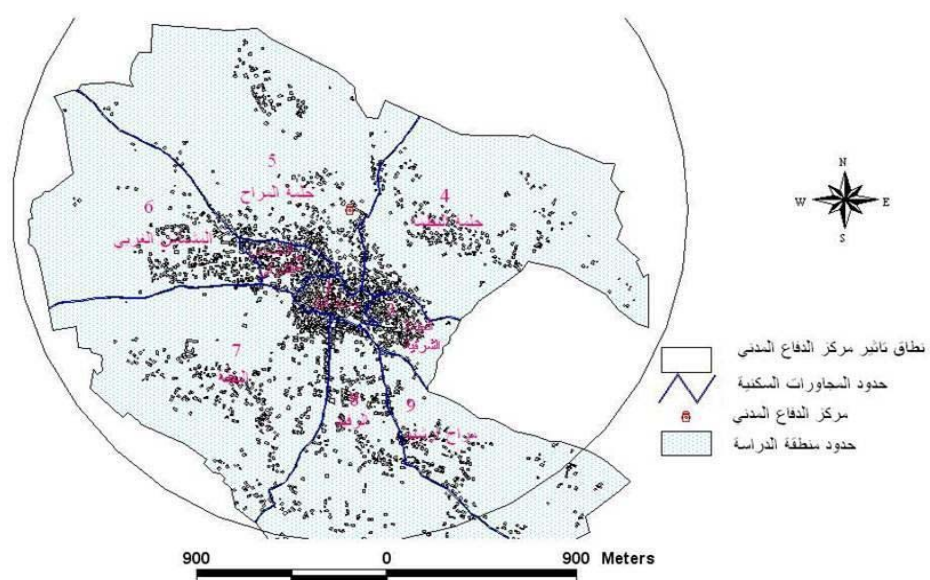
خارطة رقم (26): نطاق تأثير الملاعب حسب التوزيع المقترح



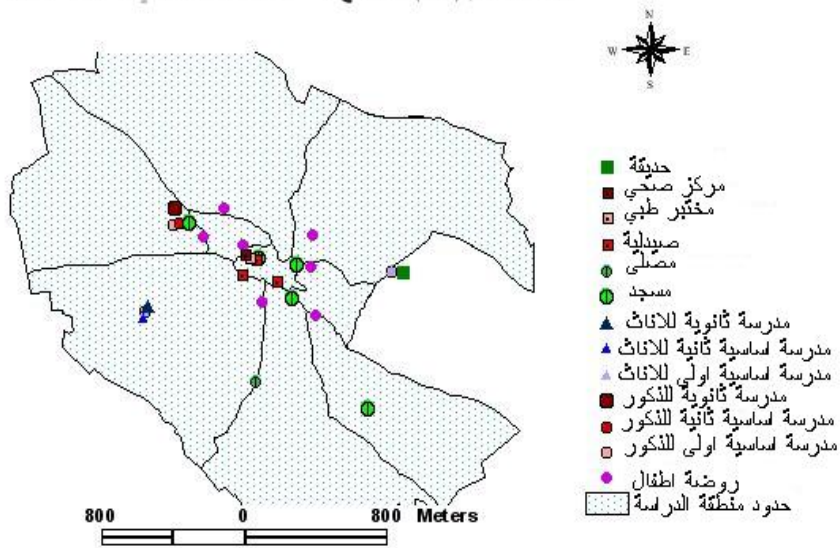
خارطة رقم (27): نطاق تأثير مركز البريد المقترح



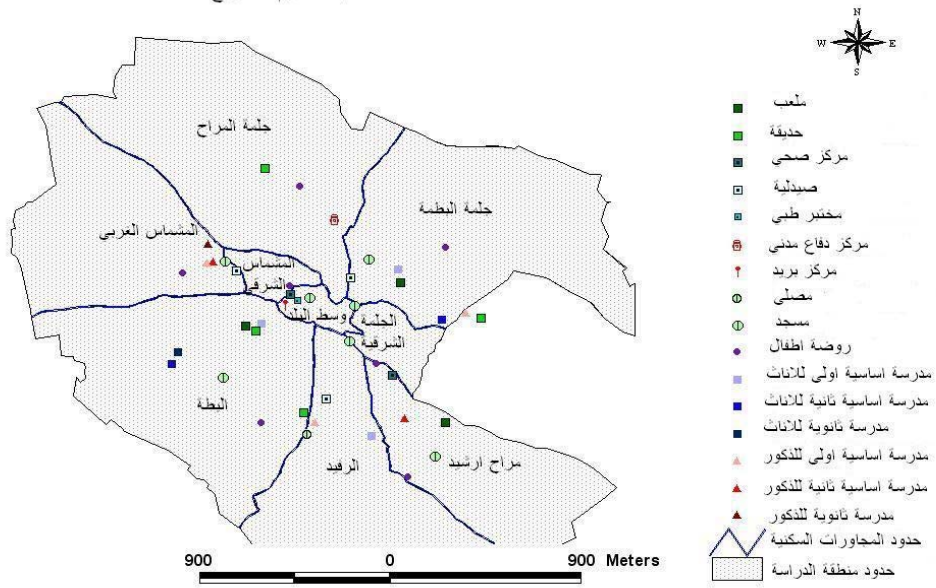
خارطة رقم (28): نطاق تأثير مركز الدفاع المدني المقترح



خارطة رقم (29): توزيع الخدمات العامة في بلدة طمون



خارطة رقم (30): التوزيع المقترح للخدمات العامة في بلدة طمون
حسب التقسيم المقترح



: 1.8

:

-1

-2

-3

:

:

:

.1

.

.2

.

% 76.6 .3

.

.4

.

:

:

.1

.

.2

.

.3

.

.4

.

.5

.

:

:

.1

.

.....	.2
.....	.3
.....	.4
.....	.5
.....	
.....	
.....	.1
.....	
.....	.2
.....	.3
.....	
.....	
.....	.1
.....	
.....	.2
.....	.3

: :

.1

(800) (10)

.

.2

:

.

.3

.

.4

.

.5

% 56.8

.

: **2.8**

:

.1

.

.2

		.3
	.	
		.4
	.	
.		.5
	.	
		.6
.		.7
		.8
	.	
		.9
	.	
		.10
	.	
		.11
	.	

.1

. 2002 . :

. :

. 1990

. 1997 :

. :

WWW.cadmagazine.net 2002

. :

. 1990 1

. 2002 . :

. 2000 1 . :

.GIS :

. 2006

. 1995 . :

. 2006 . :

. :

. 2005

. :

. 1997

:

. 2002

.

. 2002 1

.

:

.

:

. 2006

. 2006

.

:

. 2006

:

. 1977

.

:

. 1995

.

:

. 1999

.

:

.

:

. 1978

.

:

. 2002

. 1972

.

:

.

:

.

. 1989

.

.

:

. 1998

. :

:

.(GIS)

. 2003

. :

. WWW.arij.org

. 2001 1

. :

.()

:

. 2001 1

. :

. 2005

:

. 2003 3

.

. :

:

. WWW.moe.edu.qa 2001

:

. 2004

.

2000 .

:

.WWW.arij.org

. 1918 – 1700 :

. 1999

. 1985 :

. 1984 . :

. WWW.qapatia.edu.ps :

. 2006 :

:

.WWW.momra.gov.sa .

:

.WWW.momra.gov.sa 2003

:

(2)

Carter, H. **The Study of Urban Geography**, Edward Arnold, London, 1981.

Chapin, F.S. and Kaiser, E.J. **Urban Land Use Planning**, University of Illinois Press, Urbana.

Cresswell, R. **Quality in Urban Planning and Design**, Newnes-Butter Worths, London.

Easa, S. **Urban Planning and Development: Applications of Geographic Information Systems (GIS)**, ASCE, Virginia.

FAO. **Guidelines for Land Use Planning**, FAO Publications, Development Series No.1, Rome, 1993.

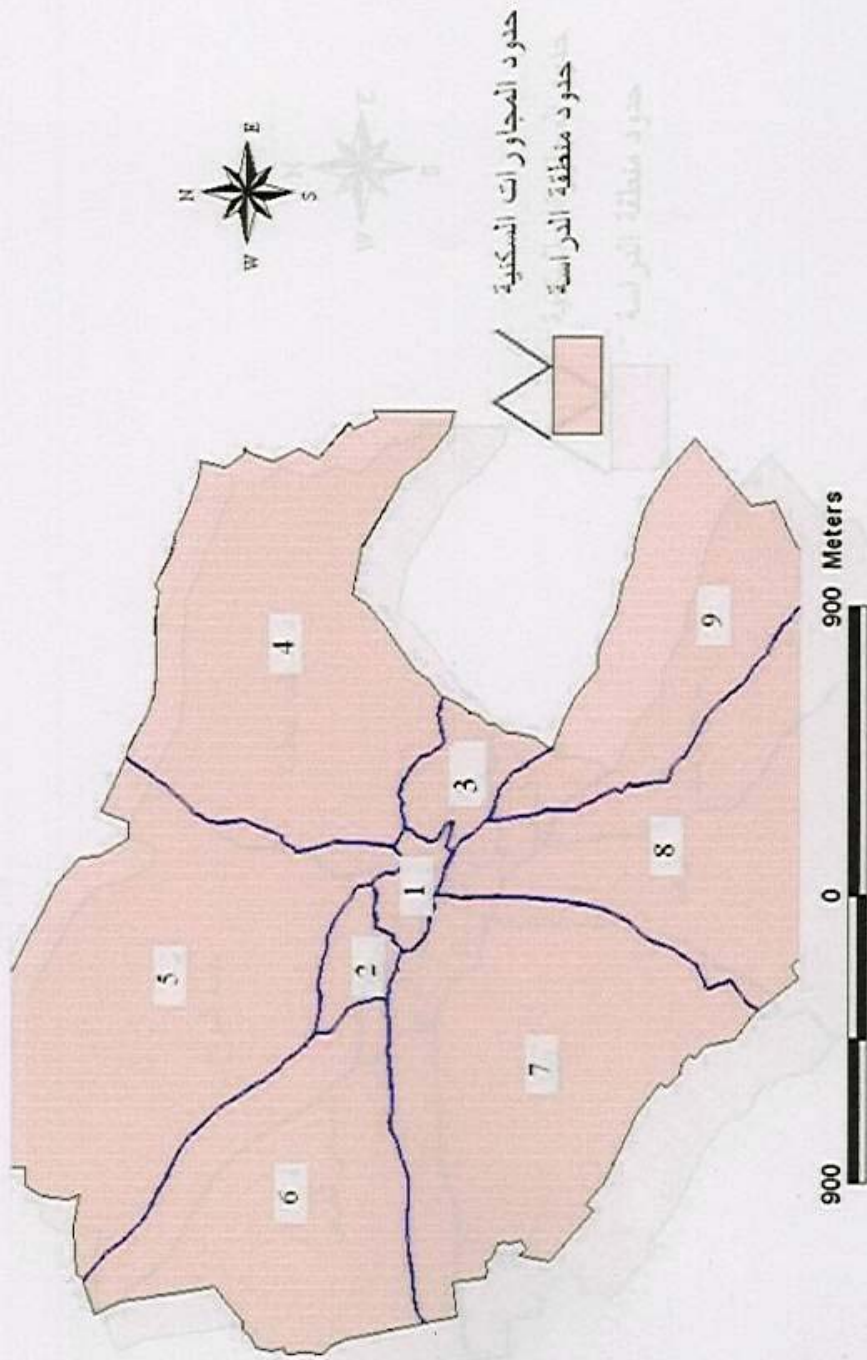
Koppelman, L. and De Chiara, J. **Urban Planning and Design Criteria**, Van Nostrand Reinhold Company, New York, 1982.

Mather, A.S. **Land Use**, John Wiley and Sons Inc., New York, 1984.

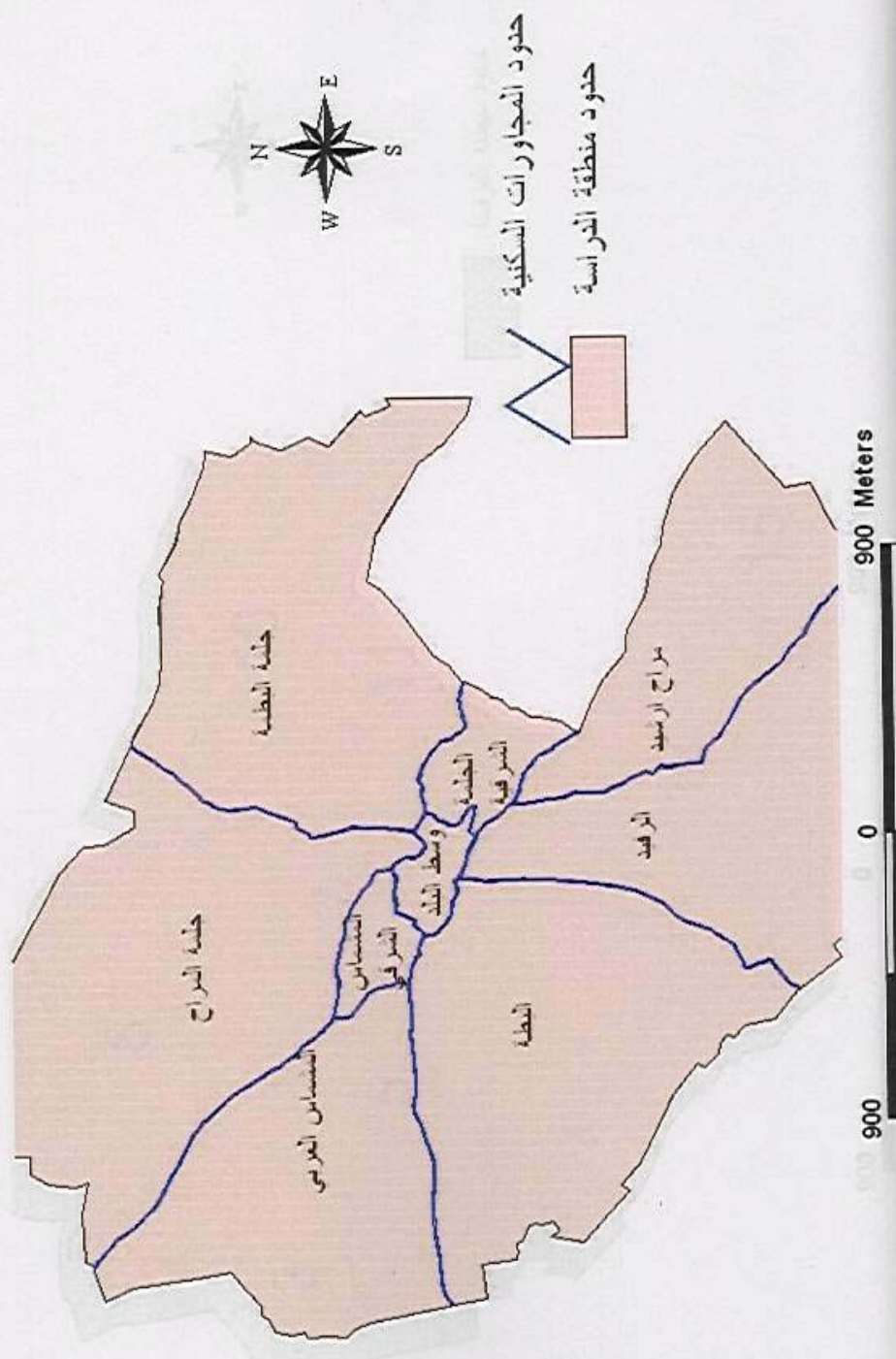
Ministry of Health (MOH). **The Status of Health in Palestine**, Annual Report, Ramallah, 2002.

Ministry of Planning and International Cooperation (MOPIC). **The Regional Plan for the West Bank Governorates**, Ramallah, 1999.

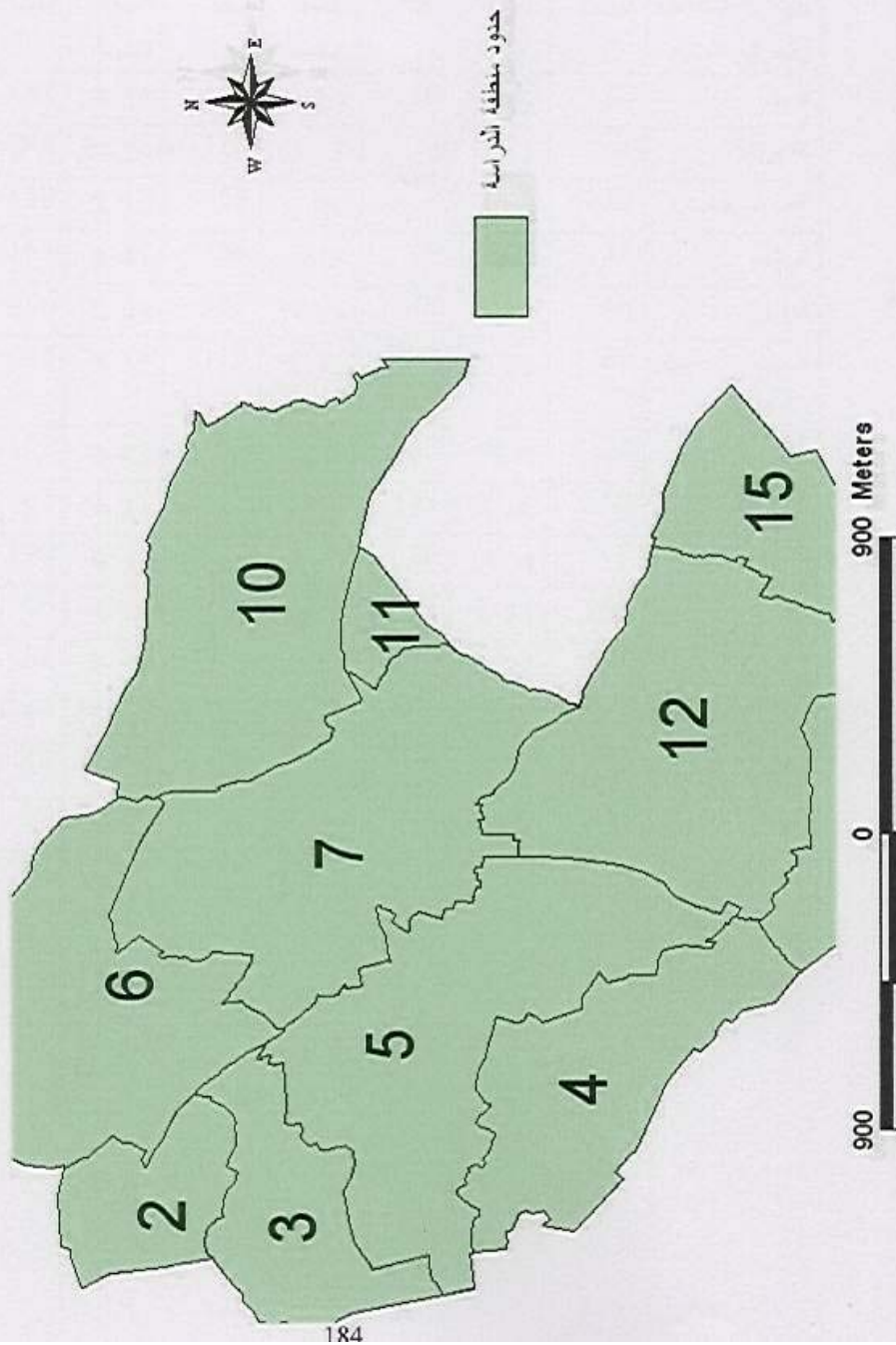
منطق رقم (1) : ارقام المجاورات السكنية حسب التقسيم المقترح



ملحق رقم (2): أسماء المجاورات السكنية في بلدة طمون حسب التقسيم المقترح



ملحق رقم (3): أرقام الاحواض داخل منطقة الدراسة



(5)

14	52	% 30	114	% 24	92	% 32	122	
% 65	248	% 29	110	% 5	18	% 1	4	
% 4	18	% 16	59	% 34	130	% 46	173	
% 44	167	% 41	156	% 7	26	% 8	31	
% 25	96	% 43	162	% 19	74	% 13	48	
% 12	44	% 31	119	% 36	137	% 21	80	
% 35	132	% 43	165	% 15	55	% 7	28	
% 12	46	% 34	131	% 38	143	% 16	60	
% 50	190	% 39	147	% 7	28	% 4	15	
% 4	16	% 19	71	% 33	127	% 44	166	
% 6	21	% 43	166	% 29	109	% 22	84	
% 12	44	% 46	176	% 28	107	% 14	53	
% 16	59	% 47	182	% 22	82	% 15	57	
% 26	97	% 51	195	% 16	63	% 7	25	

(6)

65	65-25	24-19	18-13	12-6	5-4	4	

	-2		-1		6-4		-11
	-3		-2		-1 :		-12
. (.....)			(.....)		:		- 13
1999 - 1000	-2		1000		- 1 :		-14
3000	-4		2999 - 2000		- 3		
-3			- 2		- 1 :		-15
			-5		- 4		
.....							
				:	:		-
	-3 (.....)	-2	-1 :		-1
			.2:			-2
			.2 :			-3
			:			-4
		:			-5
			.	-2	-1		-6
-4	-3		-2		-1 :		-7
	.	-2			-1 :		-8
		 :			-9
				:			-10
	-3		- 2				-1
.....	-6		-5				-4
							- 11
	-4		-3		-2		-1
-8	- 7		()	-6		- 5	
.....							
				:	:		-
	-3		-2		-1 :		-1
			-2		-1 :		-2
	-3		-2		-1 :		-3
()	-3		-2		-1 :		-4
			-2		-1		-5
	-2		-1				-6
.....							-7
.....						- 8

.....

.

- 9

-10

-2

-1

-4

-3

-11

-12

					()

-13

.

-

-

-

-

-

-

-

-

-

-

(7)

.....	:	-1
.....		
.....		
.....		-2
.....		
.....		
.....		
.....		-3
.....		
-	-	- 4
-	-	- 5
.	- - 6

.....	:	-1
.....		
.....		
.....		-2
.....		
.....		
.....		
.....		-3
.....		
-	-	- 4
-	-	- 5
.	- 6

.....	-1
.....	
.....	
.....	-2
.....	
.....	
.....	-3
.....	
.....	
.....	
.....	
.....	-4
.....	
.....	
.....	
.....	-5

[illegible]

.....	:	-1
.....		
.....		
.....		-2
.....		
.....		-3
.....		
.....		
.....		-4
.....		
.....		

.....	/	:	-1
.....			
.....			
.....			-2
.....			
.....			
.....			-3
.....			
.....			
.....			
.....			-4
.....			-5

.....	:	-1
.....		
.....		
.....		
.....		-2
.....		
.....		
.....		-3
.....		
.....		
.....		

**An-Najah National University
Faculty of Graduate Studies**

**The Distribution and Planning of Public Services in Tammoun Town
(Tubas Governorate) Using the Geographic Information Systems (GIS)**

**Prepared By
Kifah Saleh Mohammed Abdallah**

**Supervised By
Dr. Ali Abdelhamid
Dr. Ahmed Rafat Goudieh**

**Submitted in Partial Fulfillment of the Requirements for the Degree of
Master of Science in Urban and Regional Planning, Faculty of
Graduate Studies, at An-Najah National University, Nablus, Palestine.**

2007

The Distribution and Planning of Public Services in Tammoun Town (Tubas Governorate) Using the Geographic Information Systems (GIS)

**Prepared By
Kifah Saleh Mohammed Abdallah**

**Supervised By
Dr. Ali Abdelhamid
Dr. Ahmed Rafat Goudieh**

Abstract

This study is concerned with the distribution and spatial planning of different public services in the Palestinian Town of Tammoun as an attempt to deal with the improper distribution of these services in the town, as it is the case in most of other Palestinian towns and localities, in addition to the absence of spatial planning regulations according to the related population size and density.

The major aim of this thesis is to analyze and evaluate the current situation of public services in Tammoun Town in terms of their distribution and suitability, and their relationships with population and physical density in each neighbourhood unit with reference to the planning regulations of these services. Moreover, it aimed at determining the priorities of physical development in the town during the coming period.

To achieve this aim, the concepts concerning urban planning, planning of public services as well as the concepts of Geographic Information Systems (GIS) and applications in planning were studied. The methodology of the thesis was mainly based on both the descriptive and analytical methods as well as on the results of the physical survey of population and public services in the town using the GIS and software of Statistical Package of

Social Sciences (SPSS).

The results of the study have indicated that Tammoun suffers from the lack of basic services like education, health and recreation. Also, it indicated that most of the public services were improperly distributed without considering the population densities and planning regulations.

The study has recommended the necessity of preparing a well defined plan for the distribution of public services in Tammoun according to the planning regulations and based on the current and future distribution, size, and density of the town's population.