

2015

Driver Behavior Evaluation of Variable Speed Limits and a Conceptual Framework for Optimal VSL Location Identification

Curt P. Harrington

University of Massachusetts - Amherst, curtpharrington@gmail.com

Follow this and additional works at: http://scholarworks.umass.edu/masters_theses_2

 Part of the [Civil Engineering Commons](#), [Construction Engineering and Management Commons](#), and the [Other Civil and Environmental Engineering Commons](#)

Recommended Citation

Harrington, Curt P., "Driver Behavior Evaluation of Variable Speed Limits and a Conceptual Framework for Optimal VSL Location Identification" (2015). *Masters Theses May 2014 - current*. 154.

http://scholarworks.umass.edu/masters_theses_2/154

This Open Access Thesis is brought to you for free and open access by the Dissertations and Theses at ScholarWorks@UMass Amherst. It has been accepted for inclusion in Masters Theses May 2014 - current by an authorized administrator of ScholarWorks@UMass Amherst. For more information, please contact scholarworks@library.umass.edu.

DRIVER BEHAVIOR EVALUATION OF VARIABLE SPEED LIMITS
AND A CONCEPTUAL FRAMEWORK FOR OPTIMAL VSL
LOCATION IDENTIFICATION

A Thesis Presented

By

CURT P. HARRINGTON

Submitted to the Graduate School of the
University of Massachusetts Amherst in partial fulfillment
of the requirements for the degree of

MASTER OF SCIENCE IN CIVIL ENGINEERING

February 2015

Civil and Environmental Engineering

DRIVER BEHAVIOR EVALUATION OF VARIABLE SPEED LIMITS
AND A CONCEPTUAL FRAMEWORK FOR OPTIMAL VSL
LOCATION IDENTIFICATION

A Thesis Presented

By

CURT P. HARRINGTON

Approved as to style and content by:

Michael A. Knodler, Jr., Chair

Eric Gonzales, Member

Richard N. Palmer, Department Head
Department of Civil & Environmental Engineering

DEDICATION

I dedicate this thesis to my loving and undeniably supportive parents Kevin and Judy and brother Ryan, and in loving memory of my sister Brooke of whom I live in honor of each and every day.

ACKNOWLEDGMENTS

First and foremost, I would especially like to thank Dr. Michael Knodler, my advisor, professor, and my part-time psychologist. His unwavering guidance, support, personality and work ethic inspired me to get into transportation engineering and to complete this thesis. Dr. Knodler's complete dedication to his field, family and students is absolutely unmatched.

I would also like to thank the UMass Transportation Center for funding my assistantship; Robin Riessman for moderating the focus groups and providing her expertise on such; Dr. Eric Gonzales for rounding out my thesis committee and providing excellent feedback; Dr. Mi-Hyun Park and my GIS class partners for assisting in the data analysis; Dr. Eleni Christofa for kick-starting my thesis idea; and all of my classmates and friends for being nothing short of helpful, friendly and fun when I needed it most.

Lastly, I would like to thank my parents for pushing me to fulfill my potential, to become a well-balanced man, and to relentlessly chase my dreams.

ABSTRACT

DRIVER BEHAVIOR EVALUATION OF VARIABLE SPEED LIMITS AND CONCEPTUAL FRAMEWORK FOR OPTIMAL VSL LOCATION IDENTIFICATION

February 2015

**CURT P. HARRINGTON, B.S.C.E., UNIVERSITY OF MASSACHUSETTS
AMHERST**

M.S.CE., UNIVERSITY OF MASSACHUSETTS AMHERST

Directed by: Professor Michael A. Knodler, Jr.

Static speed limits are the norm across the world's roadway networks. However, advances in technology and increased applications in intelligent transportation systems (ITS) provide a mechanism for upgrading traditional speed limits into an active traffic management system. More specifically, variable speed limits (VSLs) can be used in high crash severity locations and in real-time congestion and weather events to increase traffic safety and operations. Much of the available literature on VSLs focuses upon crash prediction algorithms for VSLs, simulations, and effectiveness of real-world VSL implementations. One noticeable gap in the existing literature is related to driver compliance under varied configurations of alerting drivers of the variable speeds. An additional gap in literature is related to existence of a conceptual framework for identifying optimal corridors for potential VSL implementation.

Within this thesis drivers' willingness to comply with VSLs was investigated via focus groups and static surveys during the experimental process. Connections are made between driver speed choice and type of speed limit condition including uniform speed

limit (USL) versus VSL, overhead mount versus side mount, presence of an explanatory message, and the numerical speed limit value. An analysis of the survey results was completed to isolate critical factors in VSL compliance. Opinions and perspectives on VSLs are derived through the focus group sessions

Lastly, a case study approach is presented in which a region is chosen, and implementation metrics are analyzed on the major roadway networks using a GIS platform to create a composite ranking system for potential optimal VSL corridors. The study aims to be used as a foundation to justify use of certain types of VSLs in addition to creating a conceptual framework for VSL implementation zone identification.

TABLE OF CONTENTS

	Page
ACKNOWLEDGMENTS	iv
ABSTRACT	v
LIST OF TABLES	viii
LIST OF FIGURES	viii
CHAPTER	
1. INTRODUCTION	1
Problem Statement	3
Scope of Research	3
Research Objectives	4
2. BACKGROUND	6
Previous VSL Applications	6
Crash Prediction and Risk Analysis for VSL Implementation	8
Crash Hotspot Identification Methods	11
3. METHODOLOGY	13
Perform Literature Review	13
Static Survey and Focus Group	14
Formulation of an Optimal VSL Location Identification Algorithm	21
4. RESULTS AND ANALYSIS	27
Focus Group and Static Survey	27
VSL Corridor Optimization	40
5. CONCLUSIONS AND RECOMMENDATIONS	48
Static Survey and Focus Group Conclusions	48
VSL Corridor I.D. Framework and Case Study Conclusions	51
APPENDICES	
A. FOCUS GROUP MODERATOR'S GUIDE	55
B. SPEED SELECTION SURVEY	63
REFERENCES	76

LIST OF TABLES

Table	Page
1. Critical Factors in VSL Survey.....	17
2. Summary of Survey Scenarios.....	20
3. EPDO Weighting Scheme.....	23
4. Weather Conditions	24
5. Key Critical Factors Discussion Points.....	29
6. Key Outside Factors Discussion Points	30
7. Road Surface Conditions Results (2011-2013).....	41
8. EPDO Results (2011-2013)	42
9. Bottleneck Results (2011-2013) (CMRPC).....	43
10. Total Scores by Roadway Segment	44

LIST OF FIGURES

Figure	Page
1. Algorithm for variable speed limits (Konokov et. al).....	9
2. Example Static Survey Scenario.....	19
3. MassSafe Data Warehouse	24
4. Poor Road Surface Condition Crash Density.....	25
5. EPDO Crash Density	26
6. Compliance Measures of All Scenarios	34
7. Overhead vs. Side Mount Speed Differentials.....	34
8. Variance among Location and Speed Limit Altercations	35
9. Effects of Warning Message on 45 mph VSL Speed Selection.....	37
10. 3 Lane vs. 2 Lane Highway Speed Choice Differences.....	38
11. Conceptual Algorithm for VSL Corridor I.D. Optimization	47

CHAPTER 1

INTRODUCTION

Managing speed by means of speed limits is integral in ensuring highway safety and efficiency. Setting speed limits has long been considered a technical exercise that attempts to find a suitable trade-off between mobility and traffic safety that is rooted in driver expectancy. As defined by law, speed limits are meant to show the maximum safe and reasonable speed under normal roadway conditions (1). However, traditional speed limit signs, which are static in nature, are unable to adapt to changing roadway conditions, such as traffic congestion or environmental and meteorological concerns. There is a legitimate need for a sustainable active traffic management system solution to mitigate current and future highway safety and congestion needs. The highway motorist's current and future needs are continually changing due in part to an increased number of vehicles on the road as well as weather event unpredictability and intensity due to climate change. A projected 1.7 billion vehicles are expected on roads worldwide by 2035- approximately double the amount of cars as of 2013 (2). If speed limits need alteration due to changed or real-time conditions, the installation of variable speed limits may be warranted. Variable speed limits can be defined as intelligent electronic speed enforcing signs that change in conjunction with traffic and weather –related roadway conditions. VSL infrastructure can include but is not limited to: digital color video cameras to detect vehicle traffic volume, speed and classification; a meteorological station to determine precipitation type and rate, wind speed, temperature and humidity; variable message and speed limit signage; and data communication systems that include

algorithmic design for real-time speed limit adjustment. VSLs have the potential to reduce recurrent congestion, address adverse weather impacts on highways, and improve traffic safety by buffering traffic shock waves and homogenizing speeds (3). In theory, vehicle operators may adhere to variable speed limits more than static ones because they correlate more with actual highway conditions in real-time which in turn leads to better driver awareness and obedience (4).

The literature reviewed herein is best separated into three sections: Previous VSL Applications, Crash Reduction Prediction, and Crash Hotspot Identification. By reviewing the results of real-world VSL applications in combination with research into crash prediction and hotspot identification, a conceptual framework for identification of high potential corridors to implement VSLs can be confidently made. A conceptual flow algorithm for effective VSL corridor identification can be derived from past VSL studies and case studies. A case study using Central Massachusetts is used as an example to work through the identification algorithm to identify top locations for implementation. This thesis provides a methodology and results for evaluating driver compliance to VSLs in addition to designing a streamlined framework for agencies and authorities to choose and justify VSL corridors in their region.

Problem Statement

There is a need for a means to evaluate driver behavior and compliance to variable speed limits. Previous studies acknowledge safety benefits, yet fail to correlate driver behavior in VSL corridors.

It is readily apparent that there is sufficient information on the potential for VSLs to provide safety benefits in certain roadway conditions, especially in Europe, however there is not the same magnitude of information related to VSL implementation studies in the United States. There is a need for a deeper understanding of how drivers interact with variable speed limits in addition to how agencies can efficiently select corridors to implement VSLs. Up to this point, there has been no data-driven methodical approach towards finding such roadway sections.

Explicitly, a correlation is needed to be made between driver speed choices and the type of speed limit condition to measure the effectiveness of VSLs. This will allow a better understanding of which condition real-world agencies should choose to increase effective speed harmonization.

Scope of Research

This research examines drivers' attitudes and behaviors towards VSLs using a focus group setting. Speed selection and opinions and perspectives on VSLs are targeted in these sessions. Also of note, there are numerous variables that may contribute to driver speed choice in a static setting, however this study will isolate only variable speed limit signage. Although there are many conditions that are assimilated with the use of VSLs such as poor weather conditions, police enforcement, and road conditions and

congestion, these will be held constant in effort to eliminate any confounding behaviors on the survey. This research did not investigate VSLs that are configured on a per-lane basis, as are seen in some European countries. Additionally, VSLs with speed limits above the normal (e.g., current typical) roadway's posted limit were not included within the scope of this research; however, this topic may be a future consideration given the national attention associated with the idea of increasing the speed limit to decrease speed variance in certain highway corridors as a measure of improving safety.

Lastly, a case study of spatial and composite ranking analysis of filtered crash data in Massachusetts between 2011-2013 is done to develop an algorithm for identifying optimal VSL corridors. The data considered is reflective of the most readily available data at the time the research was being completed.

Research Objectives

Based upon the existing research needs and problem statement, a series of proposed research objectives is set forth. Specifically, the research goals are as follows:

Objective 1: Evaluate driver behavior and speed selection with various VSL configurations. Identify drivers' critical isolating factors in the speed selection process for VSL implementation in addition to obtaining their opinions and perspectives on VSLs.

Objective 2: Create a streamlined data-driven conceptual framework for identifying optimal VSL corridors. Utilize crash and congestion data to identify

potential candidate locations for VSL implementation in a case study to work backwards towards developing a location selection algorithm.

These research objectives are further detailed in the following sections.

CHAPTER 2

BACKGROUND

Given the prevalence of VSL usage worldwide, there is a significant amount of literature related to the topic. Much of the existing literature associated with VSLs is related to crash prediction, hotspot identification, and previous VSL applications. The literature relevant to the current research effort was reviewed and is summarized in the following sections.

Previous VSL Applications

Manually adjusted variable speed limits were first introduced in Germany in the year 1965 (5). Years later, in the 1970s, Germany installed automatic VSLs on parts of their A8, A5, and A3 highways and rural autobahn. The determination of speed limits in VSL-controlled zones was based on a rudimentary algorithm taking into account traffic and environmental data. The crash rate was reduced by 20-30 percent where VSLs were deployed in both regulatory and advisory contexts (6). Today, there are over 800 km of variable speed limit-controlled highways in Germany (5). In 1991, the Netherlands introduced a variable speed limit system that detected visibility and traffic incidents. The speed reduction results were significant; drivers reduced their speeds by an average of 5-6 mph. To smooth traffic flows on the M25 highway in the United Kingdom, a VSL system was implemented in 1995, in which a 10-15 percent crash reduction was measured post-installation. In Finland circa 1994, sixty-seven variable speed limit signs and thirteen variable message signs were installed over a fifteen mile section of highway. The primary motive for installation was to reduce winter weather related accidents; 95

percent of motorists interviewed post-VSL installation endorsed the new system (5). Later in the 1990s in Finland, a study further investigated the effects of weather-related VSLs for slippery roads. Inductive loop detectors were used to obtain speed data from a roadway that changed speeds from 100 km/h to 80 km/h in slippery conditions. In the winter, the mean speed reduction caused solely by the VSL (weather-related speed reduction removed) was 3.4 km/h. In slippery road conditions, the mean speed due to sign placement reduced by 1.8 km/h. Speed variance was also significantly decreased which is a critical way to reduce crash occurrence (7).

Lee et al (2006) used microscopic traffic simulation on the Gardiner Expressway in Toronto, Canada to examine the effects of reducing speed limits upstream of bottlenecks on crash potential and travel time. They found that it is optimal to establish speed limits that are the average of the upstream and downstream speeds, as rapid deceleration, and high speed variance are known to cause crashes. The researchers found that crash potential could be reduced by 5-17percent using VSLs in appropriate situations without significantly increasing travel time (8).

Li et al (2007) used loop detectors to generate aggregated traffic data along I-880 in Oakland, California and combined this information with historical crash data to develop a Rear-end Collision Risk Index (RCRI) as a model to identify locations prone to crashes (9).

In 2009, a variable speed limit system was introduced on some parts of the southbound C31 and C32 highways in the Barcelona Metropolitan Region of Spain. The variable speed limit implementation was found to generally improve traffic uniformity, treat shock waves, and reduce average speed and speed variability (10).

Environmentally, the system was proven to be an improvement as well- the variable speed policy reduced NO_x and PM_{10} by 7.7-17.1 percent and 14.5-17.3 percent respectively.

Sabawat and Young (2013) developed a methodology to reduce speed limits on rural corridors in Wyoming based on weather and real-time speeds. They observed high compliance and less speed variation than before implementation (11). Yu and Abdel-Aty (2014) examined how real-time traffic and weather data can influence severity of crashes in mountainous terrain. The variables they considered included snow, grade, speed standard deviation, and temperature. Results showed that these variables had a significant impact on crash injury severity (12).

Crash Prediction and Risk Analysis for VSL Implementation

Improving traffic safety is an essential motive for the implementation of variable speed limits. To properly implement VSLs at locations to reduce crash probability, qualitative and quantitative data must be obtained that demonstrate the best ways to determine when and where a crash is most likely to occur. Lee et.al identifies three main variables that best represent crash precursors: coefficient of variation of speed, average traffic density, and average speed difference between the upstream and downstream sections of a roadway. These crash precursors are input into a real-time crash prediction model with external controls such as peak hours and road geometry. A microscopic traffic simulation model was used (PARAMICS) and multiple combinations of speed limit control strategies and durations of intervention were used at high and low crash potential thresholds. Total crash potential in this simulation decreased with lower

variable speed limits when 5-minute intervals were used. An important finding here is that total crash potential was significantly reduced with just a small increase in travel times due to VSLs (13).

It is known that elevated speed variability leads to freeway crashes. Abdel-Aty et al implements VSL at a speed difference of 7 mph, based on a study by Cunningham that found 7 mph to be the critical range in which crash-rate increases significantly. Using a 60percent free-flowing loading in PARAMICS to simulate the best possible VSL treatment, network travel time decreased by 0.8 percent (14).

Konokov et. al similarly attempted to find a quantitative indicator of crash potential to best predict when a crash is going to occur. Studies performed at various times of day and various lane configurations on multiple highways all demonstrated a common theme; all results showed a point where total crash rate drastically increased at a certain density*speed² point. The ds^2 variable represents a density-speed relationship that can demonstrate the relationship between flow and safety. This is equal to the Future Crash Potential Indicator (FCPI) for a specific roadway condition. An algorithm can be derived in order to use this FCPI to alert a variable speed limit system when it is appropriate to modify the speed limit. A critical FCPI is determined for the roadway's general conditions; using real-time data collection, if it is determined that the FCPI is greater than the critical value; a reduced speed may be calculated as demonstrated in Figure 2.0. This is important because it allows the speed limit to be adjusted ahead of when crash rates increase dramatically. An algorithm like this that can be used universally is potentially life-changing; the ability to manage speeds automatically before critical crash probabilities become high could save money and lives. It may be of

significance to compare the critical speed difference method to the FCPI method of setting variable speed limits to determine which is more sustainable and effective (15).

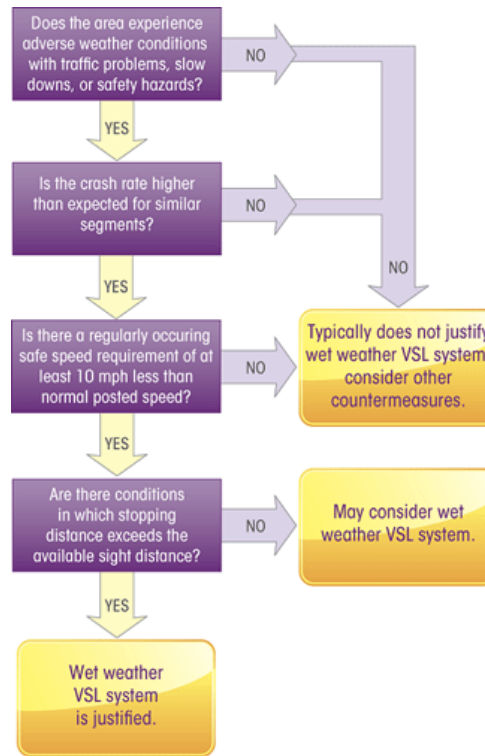


Figure 1: Algorithm for variable speed limits (Konokov et. al).

Traffic conditions have a significant impact on crash occurrence likelihood (COD). Zheng reported that during congested traffic flow, COD is six times greater than at the free-flow condition. Zheng uses ‘traffic chaos’ as a potential COD indicator that integrates speed, speed variance, and flow, and it shows promising performance (16).

In 2013, Li et al. developed a rear-end collision risk index (RCRI) using detector data as a surrogate safety measure for rear-end collision risk. This was related to kinematic traffic waves near recurrent bottlenecks along freeways (9). As defined by the FHWA, a traffic bottleneck is ‘a localized constriction of traffic flow, often on a highway segment that experiences reduced speeds and inherent delays, due to recurring operational influence or a nonrecurring impacting event.’ (17). The likelihood of a rear-

end collision was found to be highest when traffic approaching from upstream is near capacity while downstream is highly congested.

Yu found that the frequency of severe crash occurrences increased with large variations in speed prior to the crash using hierarchical Bayesian binary probit models to analyze crash injury severity on high speed facilities. He established that the standard deviation of speed 6-12 minutes prior to reported crashes was positively significant in relation to the crash event. Yu states that most previous crash injury severity studies analyzed crash report data and roadway geometry, yet failed to capture ‘micro-level’ contributing factors like average speed (12).

Crash Hotspot Identification Methods

A crash hotspot can be considered any location that has a larger number of crashes in relation to similar locations due to certain risk factors. In essence, a hotspot is a location where engineering improvements have the highest potential to improve safety. Montella states that there are three main steps toward correcting hotspots: (1) compare crash patterns at the site, (2) identify local risk factors by site investigation, and (3) identify countermeasures that have proven to be effective in those cases. GIS has played a major role in other studies in identifying hotspots for traffic crashes (18). In 2004, Loo used crash and district board databases in an early attempt to improve the accuracy of collision locations in Hong Kong plotted on GIS. The researcher eliminated buffer zones, by requiring latitude and longitude-based coordinates to “snap” to existing road layers. Based on other variables such as nearby landmarks and addresses, she sometimes also used the next-best snap to identify the most accurate location of a crash. These automated

procedures reduced the need for manual spatial validation by over 95percent (19). Kuo et al. (2013) explored the possibility of rerouting police patrol routes based on historical crime and crash hotspots in College Station, Texas. Results showed a reduction in response time of up to 44percent when Data-Driven Approaches to Crime and Traffic Safety (DDACTS) principles are applied (20).

The Texas A&M Transportation Institute (TTI) identifies three key factors to be considered when considering VSL implementation: 1) Driver compliance to the signage is integral to their overall success; 2) VSLs must only be used in response to a real-time event, and if the users don't have faith that the situations are real, compliance will be low; and 3) VSLs must be visible to all lanes of traffic, with dynamic message signs (DMS) placed regularly with warnings and/or explanations (21). However, there is no data-driven approach to these conclusions, or scientific method to determine how much compliance changes qualitatively and quantitatively when the previously mentioned key factors are altered. TTI also indicates that it is their state's responsibility to determine the viability and specific needs for VSL implementation, but doesn't give a data-driven method for determining which signs are optimal and under what conditions, or how to select the corridor that will maximize safety and congestion benefits.

CHAPTER 3

METHODOLOGY

A series of tasks were cultivated to fulfill the identified research needs and stated objectives. Static survey and focus group experimental designs were developed to isolate critical factors in variable speed limits on operating speed selection in addition to obtaining perspectives and opinions on VSLs. Finally, an algorithm for optimal VSL corridor selection was developed. The subsequent section identifies the tasks completed to evaluate previously identified objectives.

Perform Literature Review

Firstly, a comprehensive review of existing literature on variable speed limits was initiated. This task evolved throughout the thesis process as more information was discovered. A special focus was placed on crash prediction, previous VSL installments and their safety benefits, and crash hotspot identification. The knowledge of previous installments' safety advantages and crash prediction algorithms was useful in justification of the tasks set forth. Crash hotspot identification literature helped piece together a process to identify optimal VSL corridors. It was also helpful researching past focus group studies to obtain insights on how to run a successful session. The primary components of the completed review of literature was presented previously in Chapter 2.

Static Survey and Focus Group

This task ultimately contained two subtasks, the first being the development and administration of a static survey and the second, the conduction of a focus group. The tasks are directly related in that the static survey was the opening of the focus group; it was used to inspire thought and opinion on VSLs. The survey and focus group combined objectives are outlined below:

Focus Group

The focus group objectives set the precedent for what the research aimed to achieve. The focus group objectives were also meant to remind the focus group moderator the purpose of the research, and were used as a reminder if discussion was straying from the intended objectives. There were four main objectives for the focus group:

- i. Identify opinions and perspectives on variable speed limits.
- ii. Identify critical VSL type and condition isolating factors in the speed selection process for VSL implementation.
- iii. Identify the optimal VSL sign and under what conditions it is optimized.
- iv. Analyze anecdotal survey data to begin to make correlations between certain isolating factors and operating speeds.

Focus Group and Survey Methods

Firstly, a moderator's guide was developed to have a record of important objectives and questions for the focus group. The guide worked as a manuscript to keep conversations on track to fulfill all predetermined goals and objectives for the study. It will also be useful to future studies that choose to continue research and/or pull information from this research. The guide was designed to fulfill the aforementioned research objectives and

can be found in the Appendix. The focus groups were recorded via an Olympus voice recording device and permission to tape was confirmed beforehand via verbal agreement with the participants upon agreement to delete the recordings once analysis was completed. Two focus groups were completed as part of the completed research.

Logistics

There were two focus groups held; the first was held on Friday, November 7, 2014 at 12:30-1:45 PM in the Higgins Room in Marston Hall at the University of Massachusetts Amherst. The second focus group was held on Monday, November 10, 2014 at 1:25-2:20 PM at the UMass Amherst Elm House Classroom. In total, there were twenty participants, varying in gender, age, and educational/work background. Participants were recruited via posting on a local data collection agency website, and personal contact via work and classroom settings. An experienced focus group moderator was chosen to minimize confirmation bias and to improve objective concentration and conversation flow. Robin Riessman, Associate Director of the University of Massachusetts Traffic Safety Research Program (UMassSafe), was selected based upon her previous expertise as a focus group moderator in the transportation field.

Introduction

To establish a comfortable and welcoming rapport within the group, a brief introduction of the moderator and the topics to be addressed was done while lunch was served. Participants were notified that their answers and conversations will be confidential and used for research in addition to their identities being anonymous.

The first question asked was light and easily answered in order to establish some conversation and comfort.

Static Survey

Prior to questions related to personal opinions and perspectives on VSLs, a static survey was completed by the focus group participants, using a prepared presentation of images for each survey scenario depicted. The participants were instructed that they would have ten seconds to observe the scenario, and record both the speed they think they would drive in addition to the speed they believed others on that same road would drive. The static survey was designed to obtain preliminary insight into isolating critical factors in speed selection due to various VSL designs. Seventeen different scenarios were created using two original photographs taken on the driver's point-of-view on Route 90 and 91 in Central and Western Massachusetts during typical cloudy, light traffic days. The Route 90 photo was on a section of 3-lane, 65 mph enforced highway, and the Route 90 on a 2-lane, 65 mph enforced highway section. The two photographs were used as baselines for Adobe Photoshop alterations in which multiple different VSL and USL signs were altered and added in. The signs were cropped out of photographs available online, and then meshed and scaled on top of the original Route 90 and 91 photos to make it seem as if they were actually there. It was important to find photos of speed limit signs that were taken in the same orientation as the background photos to increase realistic visuals and to reduce the amount of warping to the photo aspects. Additionally, when overlaying the signs on top of the photos, special emphasis was placed on matching lighting conditions and

smoothing edges to increase realism. To isolate different factors in the speed limit signage in the seventeen scenarios depicted, there were certain aspects keyed in on for alteration. It is important to note that there are other types of VSL signs used internationally, but this study keyed in on types of signs used in the United States thus far. Further research could build upon this and potentially expand to signs more prominently used in Europe, for example. The critical factors altered in the static survey renderings are summarized in the table below.

Table 1. Critical Factors in VSL Survey

Critical Factors Altered in the Static Survey Renderings
USL vs. VSL vs. No SL Sign
Overhead vs. Side-Mounted
Message Accompanied vs. No Message
Speed Limit (45, 55, 65)

To remove the message from the VSL with warning message used, the message area was filled with black paneling copied from the outsides of the board used. When altering the white-colored LED speed limit value on both side and overhead VSLs, a similar technique was used. Changing the displayed value between 65, 55, and 45 simply involved altering pixels between white and black on the first digit of the value to create a new number.

In a few of the scenarios, computer-generated rain was added to obtain preliminary insight into whether it impacted speed choice during VSL scenarios. The rain effect was created in Adobe Photoshop using various sliders and filters on a new black background overlaid on the photos. An example of the rain/VSL scenario can be seen in Figure 2, in addition to examples of an overhead and side mounted scenario.





Figure2. Examples from Static Survey Scenarios

A summary of the scenarios and their critical factors is listed below in Table 2.

Table 2. Summary of Survey Scenarios

Scenario #	Sign Location	Warning?	Lanes?	VSL/USL/No sign?	SL Value	Rain?
1	Overhead	No	2	VSL	45	No
2	No Sign	No	3	No Sign	65	No
3	Side	No	3	VSL	55	No
4	Overhead	Yes	2	VSL	45	No
5	Side	No	3	USL	65	No
6	Overhead	No	2	VSL	55	No
7	Side	No	3	VSL	45	No
8	No Sign	No	3	No Sign	65	Yes
9	Overhead	No	3	VSL	45	No
10	Side	No	2	USL	65	No
11	No Sign	No	2	No Sign	65	No
12	Overhead	No	3	VSL	45	Yes
13	Overhead	No	2	VSL	65	No
14	Side	No	2	VSL	45	No
15	Overhead	Yes	3	VSL	45	No
16	Overhead	No	3	VSL	55	No
17	Side	No	2	VSL	55	No

The survey sheet and accompanying scenarios used for the static evaluation can be found in Appendix B.

Topics/Questions

The first topic explored was aimed at discussing critical isolating factors and conditions that affect participants while choosing their speed. The questions asked during this section started general in nature, and then focused in on factors in VSL infrastructure that may or may not influence their speeds. Multiple PowerPoint slides displaying two or three of the previously displayed scenarios together were used to inspire thought and hone in on specific factors. These discussions were set to last around 25-30 minutes, or approximately half of the total discussion time.

The second topic of the focus group was overall opinions and perspectives on VSLs in general. This part was more open-ended and formatted for opinionated discussion. Participants were asked whether or not they liked them, approved of them, and under what conditions they would be more likely to comply. Discussion was also led towards whether and under what conditions they would support state and/or federal funding on VSLs. All focus group questions can be seen in the Appendix A as a part of the Moderator's Guide.

Closing

After addressing all of the topics, the moderator spent a brief period of time wrapping up the conversation. The moderator asked if there was anything that the participants wished to discuss that wasn't brought up, or related wrap-up questions. The moderator then thanked the participants and concluded the focus groups.

Formulation of an Optimal VSL Location Identification Algorithm

To complete the research, a study has been done using GIS and crash data to best understand the optimal VSL corridor location identification process. As of now, there is no due process that has been published to inform decision makers on how to allocate funds and resources for optimal VSL corridor selection. An 'optimal' corridor for VSL implementation is be one that has the opportunity to reduce crashes and traffic due to factors that VSLs can specifically alleviate. The factors were identified through rigorous literature review and a case study was performed in order to back-track towards a working conceptual algorithm. This conceptual VSL ID algorithm will be able to guide future decision makers towards a more efficient use of their money and time.

The following is the extent of the research completed thus far for Task 5.

Crash data for the Commonwealth of Massachusetts between 2011-2013 were queried from the UMassSafe Data Warehouse. These data were then imported into a new GeoDatabase in ArcCatalog and loaded into ArcMap. As it already contained x and y coordinates for each crash, points could be plotted and matched with the Massachusetts State Plane coordinate system. A point density raster was created using the spatial analysis feature in the ArcGIS toolbox and crash hot spots could then be linked to major roadways in Massachusetts.

To identify areas where VSLs can be most effectively implemented, performance measures were selected and then analyzed spatially. In this study, bottleneck-prone locations, severity (in Equivalent Property Damage Only, EPDO) and crashes with adverse weather and roadway conditions were analyzed using Geographic Information Systems (specifically, ArcGIS). The ratio scheme chosen for EPDO reflected the relative costs to society in the event of a crash of a particularly categorized severity. The severity weightings are shown in Table 1. Property Damage Only (PDO) crashes represented the baseline by which more severe crashes were compared. Possible injury crashes were given double the weight of property damage only crashes. Crashes resulting in one or more non-incapacitating injuries were given triple the consideration of a PDO crash. Incapacitating injury crashes were counted as four times as severe as a PDO crash. Fatal crashes were assumed to be nine times as severe as PDO crashes. EPDO relative weighting is displayed in Table 3.

Table 3. EPDO Weighting Scheme

Crash Severity	Relative Weighting
Fatality	9 Points
Incapacitating Injury	4 Points
Non-Incapacitating Injury	3 Points
Possible Injury	2 Points
Property Damage Only	1 Point/Base Condition

A separate layer was then created in ArcGIS to isolate crashes with adverse weather and road surface condition. Thus, there were two output maps for reference; a map showing all crash hotspots and one strictly illustrating weather and road surface condition-related crashes. Weather and road surface conditions are coded by police at the crash site and were made available in spreadsheet form through MassSafe. A graphic representing MassSafe's Data Warehouse is provided below and the lists of recordable descriptions are shown in Table 4. The bold and italicized descriptions in the table are the conditions considered inclement for research purposes.

UMass Safety Data Warehouse

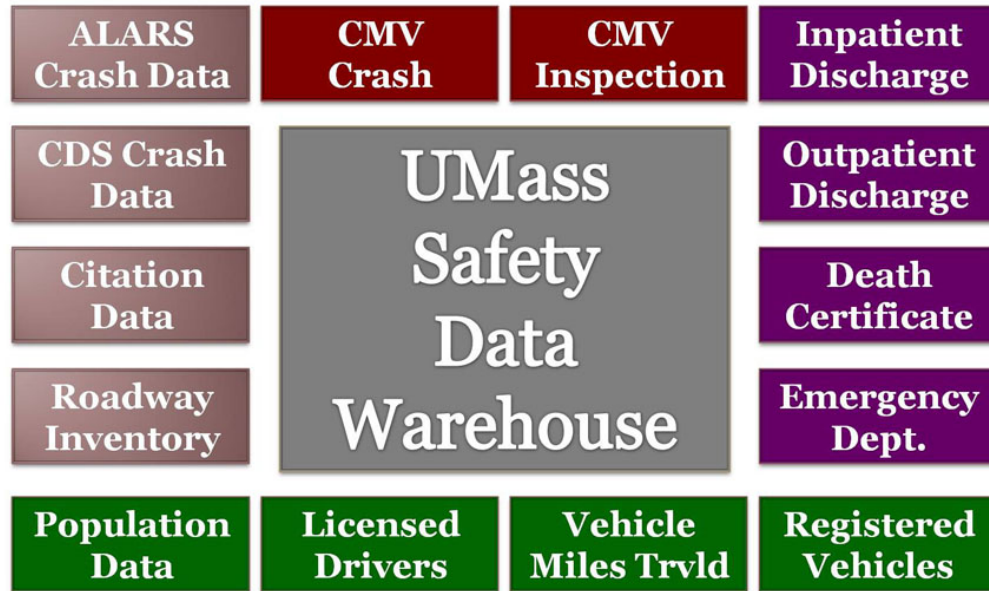


Figure 3. MassSafe data warehouse.

Table 4 Weather conditions.

Roadway
Dry
<i>Wet</i>
<i>Snow</i>
<i>Ice</i>
<i>Sand, mud, dirt, oil, gravel</i>
<i>Water (standing, moving)</i>
<i>Slush</i>
Other
Unknown

Weather
Clear
<i>Cloudy</i>
<i>Rain</i>
<i>Snow</i>
<i>Sleet, hail, freezing rain</i>
<i>Fog, smog, smoke</i>
<i>Severe crosswinds</i>
<i>Blowing sand, snow</i>
Other
Unknown

Other and unknown values were removed from the data prior to analysis. Weather conditions considered to be inclement included *cloudy, rain, snow, sleet, hail, freezing rain, severe crosswinds, and blowing sand/snow*. Adverse road surface conditions included *wet, snow, ice, sand, mud, dirt, oil, gravel, water, and slush*. It was determined for the final analysis that the weather and road surface variables are interdependent and

road surface was used, since it can more directly lead to skidding and loss of control. This analysis is discussed later in the report.

GIS data illustrating ratios of weather-related crashes relative to all EPDO collisions plotted for which severity data were provided are used to determine the relative influence of weather on a specific roadway location. This eliminates the confounding effect of traffic exposure to a roadway segment through the normalizing process. An analogous normalization for roadway surface conditions relative to EPDO crash history was also performed. GIS crash density maps for EPDO crash density and poor road surface condition crash density are shown below.

Poor Road Surface Condition Crash Density

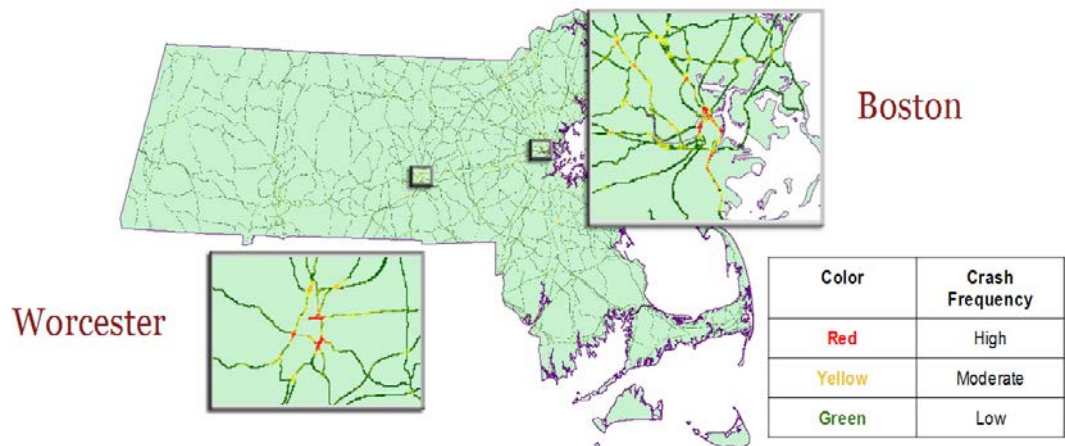


Figure 4. Poor Road Surface Condition Crash Density

EPDO Crash Density

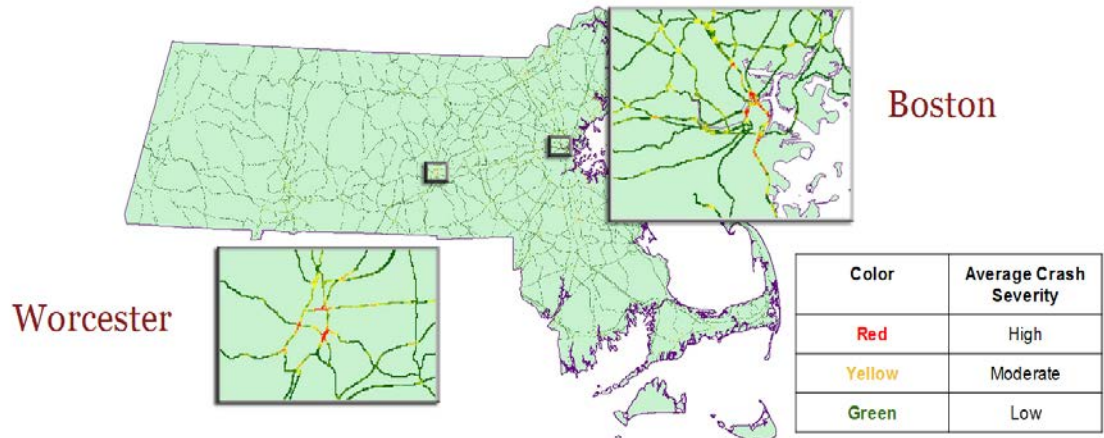


Figure 5. EPDO Crash Density

It is hypothesized that during adverse weather and road surface conditions, drivers are more likely to be traveling slowly and any crashes that occur are therefore less severe. When environmental hazards are not present, drivers travel faster and a crash is more likely to be severe. The roadway surface data and weather data were compared to observe any significant discrepancies. It would have been more accurate to obtain NCDC roadside weather data for accuracy purposes, but the data request timeline was not in concert with the project schedule.

Once crash hotspots were located, traffic bottlenecks needed to be identified to get a complete idea of where variable speed limits could be most effective. One way to diagnose traffic bottlenecks is to use a regional travel demand model. The Central Massachusetts Regional Planning Commission (CMRPC) identified localized roadway segments where volume-to-capacity (v/c) ratios were highest using demand modeling and field verification. A roadway having a v/c ratio of 1.0 is considered to be saturated. Any additional traffic flow will result in excessive congestion.

CHAPTER 4

RESULTS AND ANALYSIS

The results obtained through the previously outlined methodologies are organized and presented in this chapter and are best broken into two main sections: Focus Group and Static Survey, and VSL Corridor Optimization. For each VSL critical factor analyzed, key take-aways and quotes from the focus groups are presented in concert with a graphical representation of related survey analysis. In the VSL Corridor Optimization section, tabulated results for the case study are presented and analyzed in addition to the presentation of a finalized conceptual framework graphic.

Focus Group and Static Survey

The focus group and survey set out to obtain results that best achieved the specified research objectives. The objectives for these tasks, summarized again below, are analyzed fluidly and as a whole as the results overlap each objective.

- i. Identify critical VSL type and condition isolating factors in the speed selection process for VSL implementation.
- ii. Identify the optimal VSL sign and under what conditions it is optimized.
- iii. Analyze anecdotal survey data to begin to make correlations between certain isolating factors and speed variance.
- iv. Identify opinions and perspectives on variable speed limits.

The first topic explored was aimed at discussing critical isolating factors and conditions that affect participants while choosing their speed. Notable conditions that would influence speeds, as noted by most drivers in the focus groups, were enforcement levels, poor weather conditions, and traffic congestion. When discussing the opening discussion question of “What influences your speed selection on the roadway?” speed limit signage was not one of the major factors discussed in influencing their speeds. The majority consensus was that drivers would go at what speed they were comfortable at, or at the current speed that the flow of traffic was going. It was not until discussion was pointed toward specific scenarios they had seen in the survey that they mentioned signage as being an influential factor. Table 5 highlights key take-aways and quotes from the discussion based on critical VSL factors. Table 6 highlights the key factors outside of the speed limit signage that affects the drivers’ speed selection.

Table 5. Key Critical Factors Discussion Points

Critical Factors	Key Take-Aways	Key Quotes
Overhead vs. Side Mounted	<ul style="list-style-type: none"> When asked about their opinion on location of the signage, it was both groups' unanimous consensus that they would be much less likely to comply with side-of-the-road VSLs versus overhead mounted ones. The overall consensus with overhead VSLs were that they would make them more cautious and aware. Whether that would translate to a behavior or actual speed decrease was not clear. 	<p><i>Overhead:</i></p> <ul style="list-style-type: none"> "You can't miss the overhead sign" "I might not slow right away, but I would be more cautious" <p><i>Side:</i></p> <ul style="list-style-type: none"> "Might not even notice it"
Speed Limit (45, 55, 65 mph)	<ul style="list-style-type: none"> When asked what the effect of a 65,55, and 45 mph VSL would have on their speed choice, the consensus was that they would behave the same with a 65 VSL compared to a normal static 65 sign. With 55 and 45 mph VSLs, the consensus was that they would decrease their speeds somewhat, but without existing conditions or reasoning, the change would not slow them down all too much. There was no overwhelming opinion or consensus on 55 vs. 45 mph VSLs, however some participants voiced that a 45 VSL without any visible conditions would seem unreasonable. 	<ul style="list-style-type: none"> "45 on this road seems like an unreasonable speed" [due to no outside factors like congestion visible] "I would be more aware on a road that I travel often" [On exposure to a visible SL drop]
Message Display	<ul style="list-style-type: none"> When asked what the effect of a VSL being accompanied by a real-time message, the unanimous consensus was that an effective message would be most crucial to their compliance of the lowered speed limit. There was vast agreement that the message must display an alert with specific reasoning as to why the decrease is in effect, and must correlate to real-time danger. The signs that participants would most likely comply to would be an eye-catching color like yellow or orange, and only be used during specific scenarios in which they can confirm their reasoning within a reasonably short time. 	<ul style="list-style-type: none"> "I don't care if snow is <i>expected</i>." [When asked about preemptive weather VSLs] "It's like the boy who cried wolf" [Referring to VSL speed reductions being used too liberally]

Message Display (cont.)	<ul style="list-style-type: none"> • When the speed was being lowered due to severe congestion, work zones, etc. some voiced that a message displaying distance to the event area would improve compliance when within about 1 mile. • “ICY ROADS AHEAD” seemed to be the consensus most approved-of message. 	
-------------------------	---	--

Table 6. Key Outside Factors Discussion Points

Outside Factors	Key Take-aways
Weather	<ul style="list-style-type: none"> • Some participants voiced that it takes heavy rain for them to begin slowing their speed. The consensus was that most would slow due to poor weather conditions, but that there will always be aggressive drivers that don't adjust.
Congestion	<ul style="list-style-type: none"> • Many people made it known that the flow of traffic and the amount of cars on the road is one of the most important factors in their speed selection.
Roadway Geometry	<ul style="list-style-type: none"> • Many participants voiced that they travel at what speed they feel comfortable with in relation to the roadway geometry.
Speed Limit Signage	<ul style="list-style-type: none"> • It seemed noteworthy that most people didn't acknowledge speed limits as major influential factors in speed selection before VSLs were introduced into the discussion.
Enforcement	<ul style="list-style-type: none"> • The rate of enforcement was unanimously a top factor for compliance to speed limits in which they didn't agree with.

Alpha and Beta Speeds

Alpha is defined as the personal speed choice for the person filling out the survey; Beta is defined as the speed that they think other people would travel during the given scenario.

Table 7. Alpha and Beta Definitions

Variable:	Defined as:
Alpha	Speed that participant would drive
Beta	Speed that that participant thinks others on road would drive

In all subsequent figures, Alpha and Beta are shown side by side to not only show trends in Alpha and Beta separately, but between the two to compare the trends side by side. On the whole, The Alpha speed choice trends mimicked the Beta trends, but were usually varied in scale. This may enhance the meaningfulness of the trends, as it provides a secondary proof of the overall speed choice trends. In other words, if the Alpha trends and Beta trends mimic each other across speed percent differences, absolute speed difference and speed variance, then the trends may be more pertinent. A good example of this is in Figure 7, a graphical representation of average percent difference between the driver speed choice and the posted speed limit. The Beta speeds are slightly higher than Alpha in all four cases of location and speed limit value combinations.

Compliance and Speed Variance

When analyzing each scenario, it was desired to define which scenarios had the overall best and worst compliance and safety measures. Compliance measure here is defined as the percent difference between their speed choice and the posted limit, and the safety measure is variance between participants' speed choice per scenario. It is known that as speed variance increases on a highway segment, likelihood of a crash increases significantly, thus making an unsafe roadway condition. Thus, scenarios with the lowest

percent difference may have a higher average compliance rate, but could still have a high speed variance among participants which may be counterproductive to what a VSL is attempting to do. Scenarios with low percent difference and low speed variance are ideal. For example, scenario 15 rated extremely well for both performance factors. Scenario 15 was an overhead 45 mph VSL with a warning message. These results are preliminary evidence that drivers may uniformly comply more to this type of speed limit than any other presented in this research. Interestingly, the scenarios that had the largest gaps between their compliance performance and safety performance were scenarios 2 and 11. These scenarios were the baseline scenarios- neither of them had a speed limit sign. So although drivers generally were within a low percent difference from the actual roadway limit of 65, the variance between drivers was much higher. This may demonstrate a false sense of safety if compliance data was used without consideration of speed variance. The scenarios that received the lowest compliance ratings are then defined in Figure 6 as the highest absolute and percent difference from the posted limit. Scenarios 1, 14, and 13 showed the least compliance- and this aligned with previous cross-analysis of different factors affecting driver compliance.

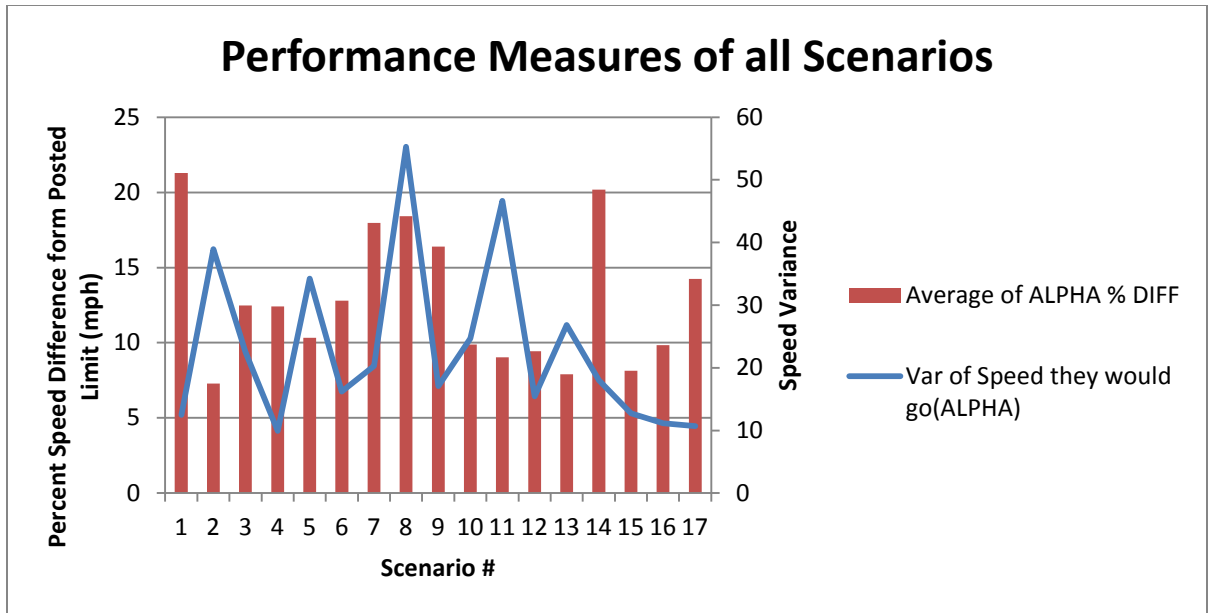


Figure 6. Compliance Measures of all Scenarios

Critical Factors

Pivot tables in Excel allowed for the isolation of critical factors in order to more deeply understand why participants were selecting certain speeds. The results for critical factors identified are summarized in the subsequent sections.

Location of Sign

Also evident in Figure 7 is that there was about a notable 3-4 mph increase in speeding above the posted limit when it was a side-mounted VSL as compared to an overhead VSL. This mirrors comments from the focus group where participants indicated that they would drive more aware and cautiously if it was an overhead VSL sign. Many participants made it known that a lowered limit on the side of the road was much less formidable and noticeable; the overhead sign seemed to gain more respect from the focus group, and this was backed up by the survey data: participants averaged

only going about 6 mph over the 45 mph overhead VSL, versus traveling approximately 10 mph over the 45 mph side-mounted VSL.

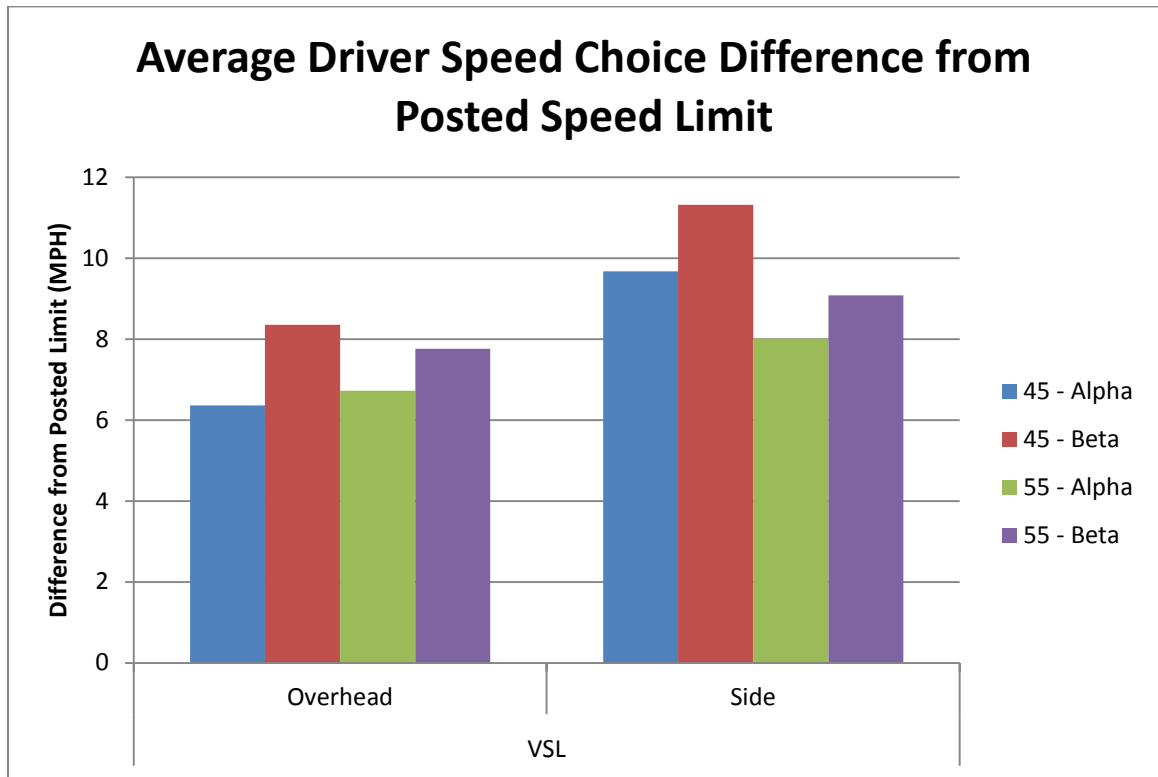


Figure 7. Overhead vs. Side Mount Speed Differentials

So, it may be known that they respect and decrease their overall speeds when an overhead sign is present versus a side-mounted one- but how does this relate to the overall speed choice variance? In Figure 8, Alpha and Beta variances are shown combined, and overall speed variances are shown separated by VSL location and speed limit value. Arguably the most interesting finding is that speed variance associated with scenarios having a 55 mph speed limit had a significantly higher variance for side-mounted scenarios as compared to overhead scenarios. And the vast majority of this increase is due to the Beta

speed- the speed that they think others will be traveling. So, although anecdotal, it is evident that the Beta speed variance could potentially be less dangerous during an overhead 55 VSL scenario as compared to a side mounted 55 VSL. This also correlates with the focus group talking points that side-mounted VSLs would not be as effective as overhead VSLs.

Further, the variance increases for side-mount at 45 mph, but not nearly as much as it does at 55 mph. This could mean that people respect the 55 mph lowered speed versus the 45 mph limit due to the overall decrease in value from the usual 65 mph limit.

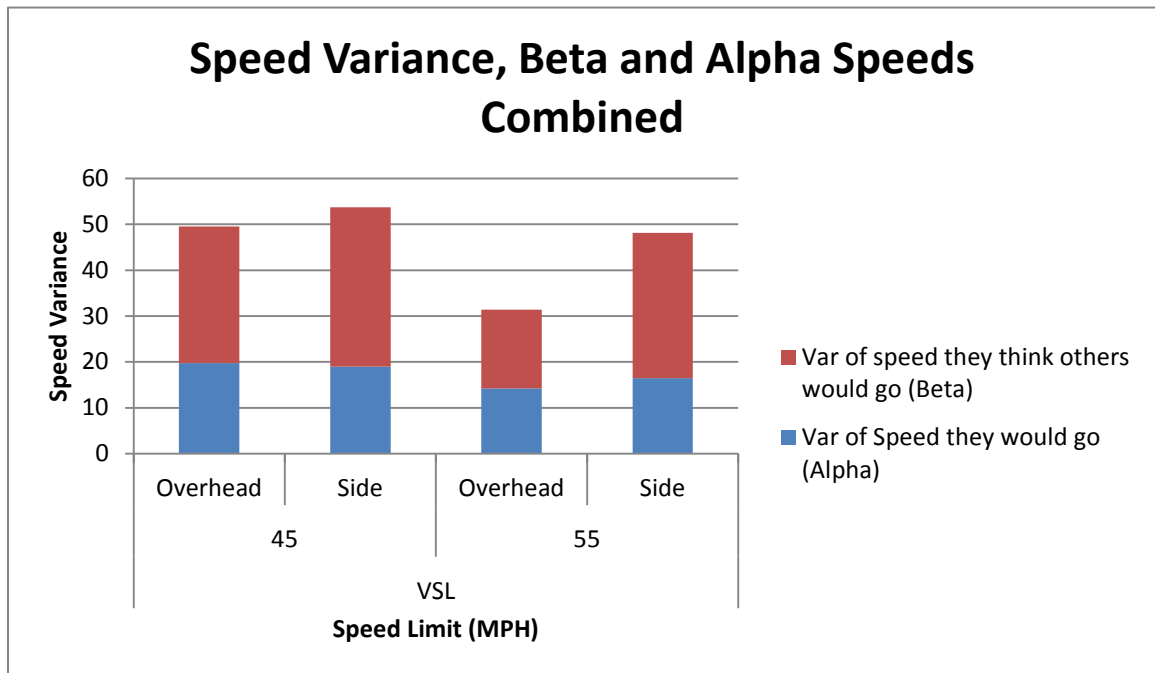


Figure 8. Variance among Location and Speed Limit Alterations

Warning Messages

One of the most recurring themes of the focus group speed selection discussion was on accompanying warning/descriptive messages with the lowered speed limit. Participants felt it was very important to give reasoning on the lowered speed limit- the overwhelming

consensus was that they would be much more likely to comply and cooperate with the new speed limit if it had a descriptive message. They wanted an exact reason as to why they should slow, whether it was icy roads ahead, or crash one mile ahead. When the VSL was being decreased due to heavy slowed traffic ahead, it was the consensus that the message should contain the distance to the back-up in addition to strong wording. However, providing the distance may work against the overall VSL system working, as people may choose to continue their speeds until the actual back-up – completely working against the speed smoothing effects that it is supposed to be having.

Nevertheless, the speed selection survey further backed up their discussions on providing a warning message with the overhead VSL. As shown in Figure 9, drivers chose an average of 55 mph during the 45 mph VSL without message. When the message was introduced in a separate scenario when all other variables were held constant, their average speed choice was 50 mph- a 5 mph decrease towards the 45 mph speed limit. A similar trend can be found for what speed the participants thought other drivers would choose. When comparing speed choice variances, there is minimal difference when a message is and is not displayed. This could mean that reduced speed and compliance to the posted limit improves with a message, but overall variance in speeds does not change noticeably. Much more research and a larger sample size would be needed to check this and all other anecdotal conclusions made within this part of the research.

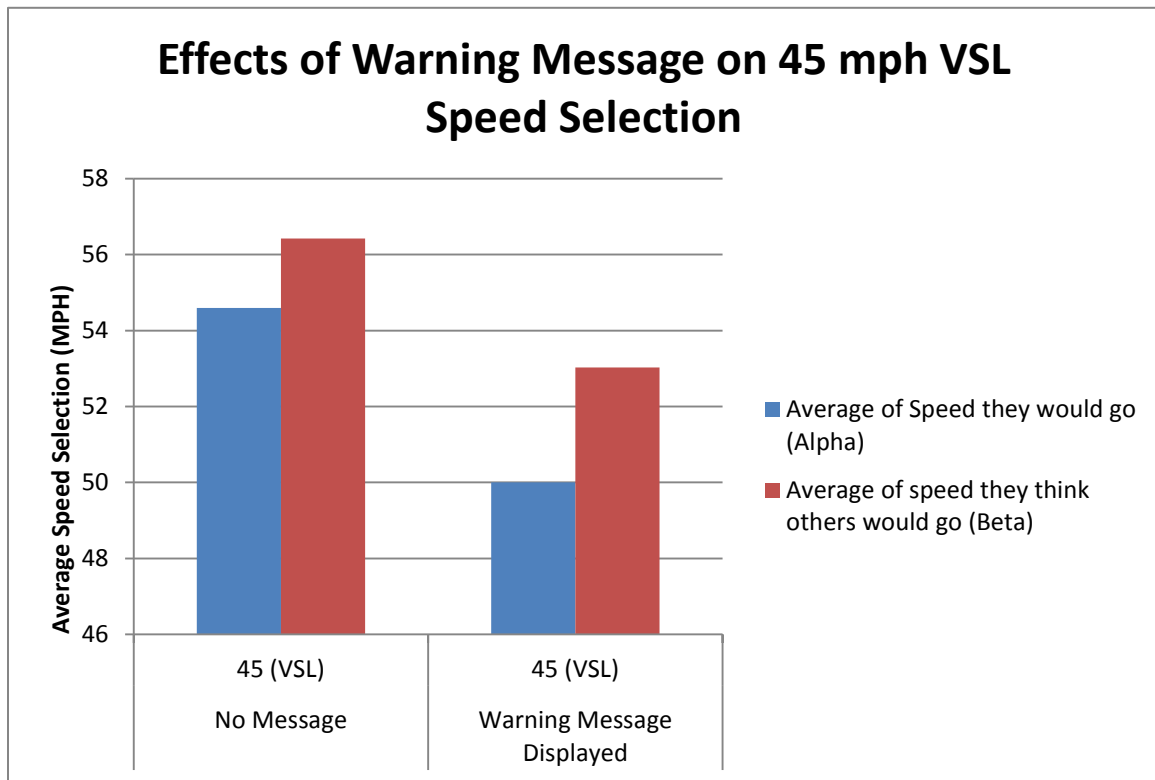


Figure 9. Effects of Warning Message on 45 mph VSL Speed Selection

Lane Configurations

All scenarios were shown on both two and three lane highways to determine if the roadway width or lane configuration had a significant impact on their speed selections. Figure 10 shows that there really is no significant difference in absolute Alpha or Beta speed choice. With further research and validation, this could prove that the speed choice is based more on conditions and speed limit signage than differences between two and three lane highway geometry. This is interesting, because during the focus groups, roadway geometry was brought up numerous times to being a main speed choice influence on the highway. To test this, more types of roadway segment geometry would have to be tested, such as curvature and superelevation. The acknowledgment of two and three lane highways not noticeably influencing driver behaviors in this speed selection

survey method could further attribute the performance measures to being influenced by the speed limit signage rather than outside conditions.

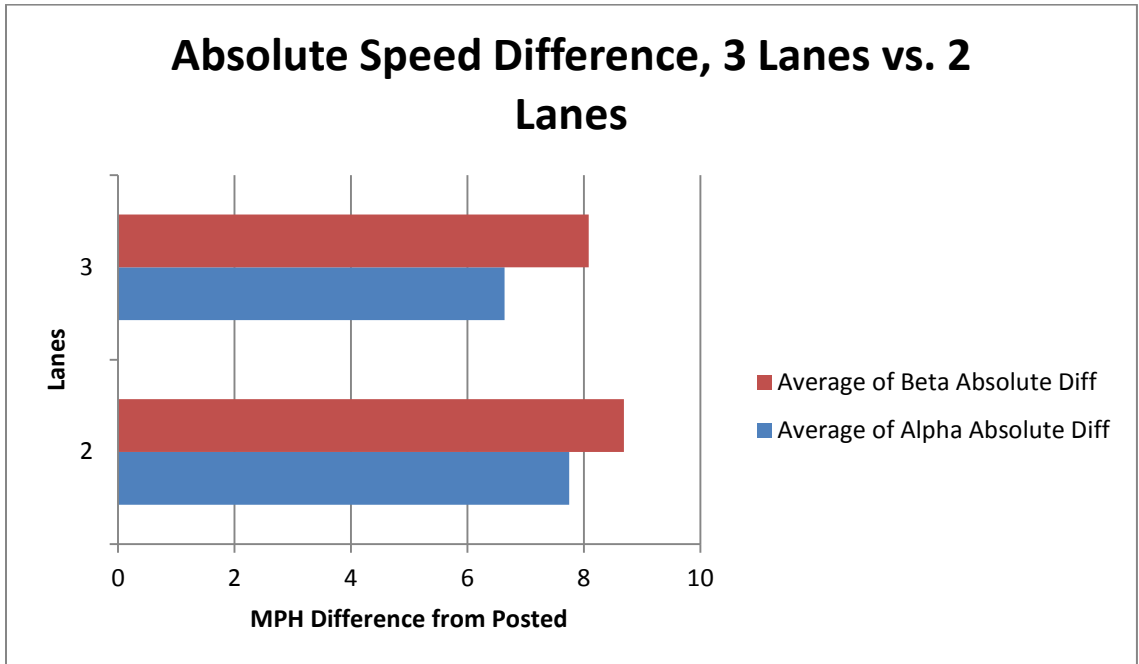


Figure 10. 3 Lane vs. 2 Lane Highway Speed Choice Differences

Opinions and Perspectives on VSLs

Opinions and perspectives represented a national and international perspective, as focus group members had experience driving or living permanently in the U.S. West, Southwest, Northeast, Mid-Atlantic, and South regions, in addition to Europe and Latin America.

In response to the question “Would you generally approve of VSLs?” focus group participants were at first hesitant, stating that they would be supportive only if they were implemented in certain locations, were clear and respected, and used only when conditions properly warranted them. One participant mentioned the need “to know that they are changeable.” The participant mentioned that it was not clearly known if the

side-mounted VSLs were not changing in real-time, thus compliance would not be high. The focus group majority agreed. Another participant mentioned that they should only be in “certain locations” referencing the need for a process that determines an “appropriate, data-driven approach to save the most lives.” When asked about whether or not they would support state and/or federal funding on them, the first thoughts were usually that many people “would be outraged.” However, the question, in retrospect, was not very pointed, as the general tax-paying public may assimilate tax spending in a negative light no matter the case. If similar research were to be done, the ‘spending’ question should be altered so it gives the participants a better understanding of how transportation funding occurs. For example, if there was a federal bond that was earmarked for just transportation improvements, would you support ‘x’ percent of the bond on VSLs? This question is more specific and realistic in nature and may have received a more useful response. However, when the discussion moved on to a scenario where it was decided they would be implemented, there was unanimous support in both focus groups that a pilot program be used to determine their effectiveness before further investment. One participant mentioned “Let’s try two or three as a pilot.” In both cases, these ‘pilot’ ideas were original thoughts by participants, and were not prompted by the moderator. The consensus was that the VSLs should only be implemented in minimal sections of corridor where there were data-driven reasoning for implementation.

There was also specific mention of transportation technologies, such as Waze, and their benefits for avoiding traffic and their relationship to what VSLs with messages do. Originally brought up as an alternative to VSLs by one participant, this idea was quick refuted by many as distracted driving (by using a smartphone to obtain and report

roadway anomalies and traffic while operating a vehicle). One participant mentioned it was safer to read a VSL with a message than looking down at a smartphone.

When discussing what participants thought what other drivers' attitudes and behaviors would be towards VSL implementation, there was an overall consensus that drivers with aggressive tendencies and personalities would not change their speeds whatsoever. This could potentially lead to an even wider disparity in speed variance, which is potentially dangerous. Although the anecdotal survey results indicate that there are optimal VSLs in which the compliance is high and variance is low, much more research must be done in order to obtain validation, deeper insights, and a larger sample size.

VSL Corridor Optimization

The top ten bottleneck areas in Central Massachusetts were ranked by CMRPC. A composite ranking system was developed, where bottlenecks, EPDO, and road surface conditions were ranked independently and assigned points according to a scale of one through ten. Since no relative values were given, not enough information was available to conduct a more sophisticated prioritizing system while maintaining consistency across scales.

The region comprising Central Massachusetts was plotted as a layer on ArcGIS and crashes within this area were selected. Nearest neighbor function with a distance of 300 meters was used to identify locations that have experienced a high crash density in which road surface conditions were poor as previously defined. The density threshold for inclusion was 140 crashes/300 meter radius. Adjacent collisions that both met the

minimum density criterion formed a zone along a corridor. The zone terminated where an adjacent crash had a density of less than 140 crashes/300 meter radius. The density at each crash along a particular corridor was summed over the entire zone, and the result was the value to be ranked. Ten distinct hotspots met the criteria, each of which was ranked in Table 8.

Table 7. Road Surface Conditions Results (2011-2013)

ROADWAY	BOUND1	BOUND2	Town/City	RANK	SUM*	SCORE
MA Route 9 (Segment A)	100' E of Hooper Street	30' E of Fruit Street	Worcester	1	219676	10
Interstate 290 Northbound	Exit 13	Exit 16	Worcester	2	169252	9
U.S. Route 20	250' E of Peters Ave	170' W of Francis St.	Marlborough	3	114329	8
Main Street/MA 16	120' E of Fayette St.	2000' W of I-495	Milford	4	76904	7
MA Route 9 (Segment B)	350' E of Walnut St.	520' W of Lawrence St.	Worcester	5	55202	6
MA 12 and MA 2A	Putnam St.	120' W of Congress St.	Fitchburg	6	54293	5
MA Route 9 (Segment C)	340' W of May St.	Elm St.	Shrewsbury/Northboro	7	54187	4
MA Route 13	Marcello Ave	MA Route 2	Worcester	8	30717	3
MA Route 12	Washington Street	MA Route 2	Leominster	9	25854	2
MA Route 9	Wayne Street	Coes Street	Hudson	10	7215	1

Crashes that had densities of over 140 within a 300-meter radius were included as hotspots. These hotspots and their neighborhoods were mapped and adjacent crash locations were plotted along the same corridor until the threshold of 140 was not met.

When this occurred, a boundary of the zone listed was formed. The densities surrounding each crash within the zone were summed over the entire zone to generate the results above.

The EPDO ranking was performed in a similar fashion. The primary difference was that each crash was initially multiplied by its corresponding severity weighting factor as previously discussed and total neighborhood scores were assessed at each crash in place of densities. Once again, a 300 meter radius was used from each crash and the threshold for inclusion this time was a score of 155 points. The procedure continued from this point as described for the road surface condition calculations. Results from the EPDO rankings are tabulated in Table 10.

Table 8. EPDO Results (2011-2013)

ROADWAY	BOUND1	BOUND2	Town/City	RANK	SUM*	SCORE
MA Route 9 (Segment A)	100' E of Hooper Street	30' E of Fruit Street	Worcester	1	170872	10
Interstate 290	Exit 13	Exit 16	Worcester	2	147968	9
U.S. Route 20	250' E of Peters Ave	170' W of Francis St.	Marlborough	3	114298	8
Main Street/MA 16	120' E of Fayette St.	2000' W of I-495	Milford	4	101923	7
MA Route 9 (Segment B)	350' E of Walnut St.	520' W of Lawrence St.	Shrewsbury/Northboro	5	63538	6
MA 12 and MA 2A	Putnam St.	120' W of Congress St.	Fitchburg	6	51382	5
MA Route 9 (Segment C)	340' W of May St.	Elm St.	Worcester	7	49108	4
MA Route 13	Marcello Ave	MA Route 2	Leominster	8	28086	3
MA Route 12	Washington Street	MA Route 2	Leominster	9	16234	2

Crashes were first multiplied by the applicable severity factor (1,2,3,4, or 9) and then a similar analysis using the sums of scores within a 300 meter radius of a crash to that above was performed, with the threshold for inclusion set at a total score of 155 within 300 meters of a crash. Zones of crashes were terminated when the value of 155 was not reached, and all scores throughout the zone are summed to generate this column's value for each of the Top 10 zones.

Bottleneck rankings were already ranked by CMRPC as mentioned previously, and are exhibited in Table 11.

Table 9. Bottleneck Results (2011-2013) (CMRPC)

ZONE	BOUND1	BOUND2	Town/City	RANK	SCORE
I-290	I-395	Solomon Pond Road Exit	Auburn, Worcester, Shrewsbury, Boylston, Northborough	1	10
I-495 (Segment A)	Westborough T.L. South	Westborough T.L. North	Westborough	2	9
Route 9 (Segment E)	Rawson St., Leicester	Great Post Road, Worcester	Leicester, Worcester	3	8
Oxford Route 12/20	Intersection, Auburn	Intersection, Oxford	Auburn,	4	7
Park Avenue	Institute Road	Highland Street	Worcester	5	6
Vernon Street	Winthrop Street	Kelly Square	Worcester	6	5
Int Ramp I-395 NB to I-90	I-395 NB	I-90	Auburn	7	4
I-495 NB (Segment B)	Berlin T.L., South	Route 62 Exit Ramp	Berlin	8	3
Grafton Street	Sunderland Road	I-90 Ramp	Worcester, Millbury	9	2
Massasoit Road	Sunderland Road	Grafton Street	Worcester	10	1

A roadway segment ranked first in a scale was assigned ten points and each rank further down the scale resulted in a decrease of one point down to tenth place being assigned one point. Composite scores were formed where a segment was included on the list for multiple scales. Table 12 presents the final composite rankings.

The developed framework was employed within the case study region. As shown in Table 12 the segment of Interstate 290 between Exits 13 and 16 was present in each of the rankings. The Roadway Surface Condition and EPDO rankings were identical, potentially disproving the hypothesis that poor road surface conditions encourage lower driving speeds and less severe crashes result. Overall, there is not enough evidence to suggest that drivers naturally select to slow down sufficiently enough under these adverse conditions to improve safety. Interstate 290 ranked first in bottleneck issues, and second overall in both EPDO and surface condition crashes. Overall, this segment scored with the highest priority based on the scaling system used.

Table 10. Total Scores by Roadway Segment

Roadway	Surface Condition	EPDO	Bottleneck	Total
I-290 Exits 13-16	9	9	10	28
MA 9 Segment A	10	10	0	20
U.S. 20	8	8	0	16
Main St./MA 16	7	7	0	14
MA 9 Segment B	6	6	0	12
MA 12/2A	5	5	0	10
I-495 Segment A	0	0	9	9
MA 9 Segment C	4	4	0	8
MA 9 Segment E	0	0	8	8
MA 12/U.S. 20	0	0	7	7
Park Avenue	0	0	6	6
MA 13	3	3	0	6
Vernon Street	0	0	5	5
Ramp I-395 NB to I-90	0	0	4	4

Interstate highways provide ideal settings for experimentation with variable speed limits, as there are no traffic interruptions due to traffic signals and stop signs. Since this stretch of Interstate 290 lies within the major city of Worcester and has substantial traffic volume, variable speed limits are likely to have a major impact. Route 9 in Central Massachusetts was also found to have several segments make the top ten aggregate VSL score.

Creation of a Conceptual VSL Location Identification Algorithm

Reviewing literature on VSLs and walking through a case study in which top VSL locations in a region were selected, it was feasible to backtrack towards defining a simplified algorithm for future selection processes. Adverse weather, road conditions, crash rates, speed variance, and congestion bottlenecks were all ‘hot words’ in much of the literature when describing where VSLs were implemented and what issues they helped alleviate. These five topics were created into a VSL data metrics pool. Adverse weather and adverse roadway surface crash data were combined as one selectable metric due to their stark similarities after the two layers were overlaid in GIS. It was decided that out of the four VSL data metrics, two or more would be necessary to obtain and analyze before moving on to the developing of a composite ranking system. This assures a diversification of metrics contributing towards VSL corridor selection- and not just a focus on one area. Once multiple data sources are established and analyzed, a composite ranking system was created in order to weight each metric, working towards a composite ranking that attributes all available data. If there was a VSL corridor that was being tested for its implementation value compared to other regional locations, it was given

justification if it fell inside the top third as well. This would ensure that the implementation occurred in one of the regional locations with the highest safety improvement ceiling. This process was then condensed and formed into a conceptual algorithm which is presented in Figure 11. This is similar in nature to the conceptual algorithm defined in Figure 1 previously by Konokov in that it is a simple step by step process for VSL implementation. For Konokov, it was just for wet weather justification, where as Figure 11 provides justification for corridor selection.

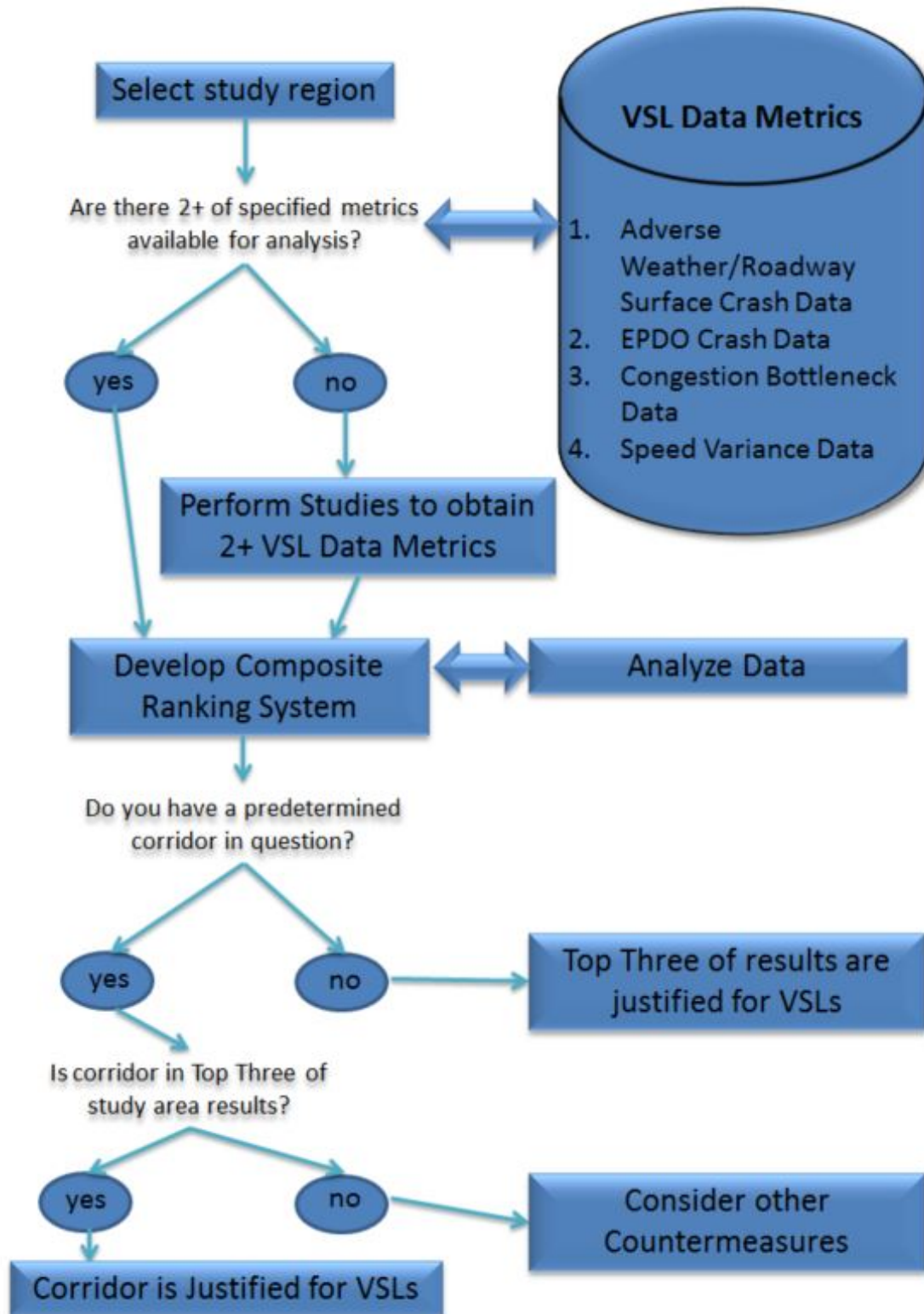


Figure 11. Conceptual Algorithm for VSL Corridor I.D. Optimization

CHAPTER 5

CONCLUSIONS AND RECOMMENDATIONS

This research offered a preliminary driver behavior evaluation of variable speed limits through static survey and focus group environments in addition to the creation of a conceptual framework for optimal VSL corridor identification. The purpose of the research was to evaluate driver behavior and compliance to VSLs and to create a preliminary method for optimizing VSL corridor selection through the analysis of safety and traffic flow performance measures. This chapter presents conclusions and recommendations derived from the previous chapter's results and analysis.

Static Survey and Focus Group Conclusions

As mentioned previously in Chapter 4, the static survey and focus group overlapped in objectives and analysis, so conclusions will be presented for the two as a whole. The results of the survey and focus groups indicate the following:

- The type of VSL with the highest compliance rates is an overhead sign with a descriptive message; speed differential percentage increased in magnitude as the limit decreased
- There was no significant difference between speed selections on three lane versus two lane highways.
- The trends between Alpha and Beta (speed the participant chose = Alpha; speed participant chose for others on roadway = Beta) were analogous across the vast

majority of analysis; generally, people thought that others would choose a speed slightly higher than theirs.

- Speed variance could be a potentially valuable performance measure when identifying top VSLs; it may be beneficial to compare VSLs compliance and variance in order to find a sign that increases compliance all the while decreasing speed variance. The VSL that achieved optimal results for this was the overhead 45 mph VSL with descriptive message.
- Preliminary results indicate that a descriptive message accompanying the VSL indicating what conditions have altered the speed limit is most crucial to compliance. The driver must have visual confirmation within reasonable distance and time from the VSL of this condition in order to sustain effectiveness. It is unclear how effective they would be on a continual basis for repeat drivers.
- In order for VSLs to have public approval, ideally there would be a pilot that had them installed in one corridor that was chosen through a data-driven approach to potentially save the most lives and reduce the most bottleneck traffic.
- Enforcement is crucial to compliance, and focus group participants' thoughts mimicked this. Level of enforcement will absolutely have an effect on the compliance of VSLs.

Recommendations and Future Research

It is highly recommended that at least four more focus groups and a much larger sample size be surveyed in order to obtain more statistically and qualitatively significant findings. Also, it is believed that through proper education of how VSLs work and

benefit the public, compliance may increase. If possible, a VSL section could be added to the driver's education requirements to obtain a driver's license. Additionally, it is recommended that the designed driving simulator experiment defined in Chapter 3: Methodology be carried out in order to validate preliminary research findings about VSLs and their critical isolating factors that influence speed selections and variances the most. This will continue to help identify compliance to VSLs and the corresponding speed variances induced. Although speed variance data and analysis was not one of the major topics of this research, it may be beneficial to test hypothesis from the anecdotal speed variance results from the static survey section of this research.

After isolating critical factors in VSL implementation from the focus group and survey tasks, there was a better understanding of how a potential driving simulation study could be designed. It is recommended that a driving simulation study be completed to further understand compliance to VSLs due to critical factors analyzed in this thesis.

To avoid confounds in scenario design, it will be important to eliminate other variables that may contribute to driver behavioral changes and operational speed choices. The types of VSLs and scenarios should best mimic those depicted in the static survey. These can be found in the Appendix B. The independent variables should be side mount vs. top mount, condition description, VSL vs. USL sign, and VSL speed limit value. It may also be considered to add in a VSL sign type that has a speed value per each lane, which are popular in Europe. Using these independent variables will allow for comparisons and correlations to be made to the focus group and survey findings.

It is recommended that the dependent variables be speed and the driver's visual scan pattern (monitored using eye-tracking equipment). The visual scan patterns will

help to analyze where drivers are spending the majority of time looking at the sign and roadway. For the pilot experiment documentation, a table summarizing the variables is below.

Independent Variables	Dependent Variables
Mount Location	Speed choice
Sign Type	Visual Scan Pattern
SL Value	
Condition Description	

Figure 12. Driving Simulation Variables

One of the most referenced talking points during the focus groups was that in order for the VSLs to be effective, they would have to correlate directly with changing roadway conditions that they can notice. For example, if the speed limit decreased to 45, then there would have to be a descriptive message and corresponding condition within a reasonable distance of the sign. So, the experiment should be designed so that there are two main drives- one where conditions do match the speed limits within reason, and then one drive where conditions do not match the speed limit ‘reasonably’.

VSL Corridor I.D. Framework and Case Study Conclusions

- A conceptual framework for the location identification of potential VSL corridors relies upon availability and analysis of data that may indicate a VSL could improve conditions. The data sets considered in this research are: 1) Adverse weather/roadway surface crashes; 2) EPDO Crash Data; 3) Congestion Bottleneck Data; and 4) Speed Variance Data.

- For the case study in Central Massachusetts, the Route 290 corridor between exits 13 and 16 proved highest scoring and most potential benefits from VSLs. If VSLs were to be considered in this region, it is recommended that this location be the pilot.
- GIS proved to be a valuable tool in collecting and analyzing data for specific geographic boundaries (like zeroing in on certain counties, etc.).
- Gaps in data sets prove to be the largest obstacle in choosing the optimal VSL locations.

Recommendations and Future Research

EPDO crash data could be focused in on rear-end collisions, which are the type pf collisions that VSLs may be most likely to improve. Cost of implementation should also be taken into factor when choosing a corridor and type of VSL infrastructure. It is recommended that a way to incorporate capital and operational costs into the conceptual framework.

One potential limitation of the developed approach may be the lack of standardization and availability of various data sets, including bottleneck data. Within this research effort it was the availability of bottleneck data from the Central Massachusetts Regional Planning Commission which made the application of the proposed system possible. It is recommended that future research efforts extend the scope of this report to include additional temporal variables, such as time of day and day of week, that may further improve the methodological approach. Specific variables of interest may include, but are not necessarily limited to these areas. Different reasons for

traveling and predominant directions of travel can affect how a roadway operates and variable speed limits can be implemented during the intervals where they can be beneficial. Information on Average Annual Daily Traffic (AADT) will be invaluable for this purpose.

At present, the current framework does not provide a specific recommendation for selection of the appropriate variables speed(s). It is recommended that future research expand upon this need, however one initial thought may be for integration with the Federal Highway Administration's US Limits 2 expert speed selection system (21). Within the case study presented herein detailed speeds along Interstate 290 were not provided. Nevertheless, the identification of Interstate 290 in Worcester as a candidate location for variable speed limits based on the data and algorithm used in this report provides a rational approach towards justification for implementation.

Details as to what speeds should be options for limits along Interstate 290 should a system be installed were also beyond the scope of this paper. Despite these shortcomings, the identification of Interstate 290 in Worcester as a candidate location for variable speed limits based on the data and algorithm used in this report provides some justification for implementation.

There are multiple confounds that may be unavoidable when obtaining and analyzing data sets for VSLs. When normalizing for crash rates across volume, exposure becomes an important consideration, and as a result a question arises as to when normalization of data may become necessary. The potential issue is that AADT counts can be few and far between- and if available, their reliability can be questioned. Reliability also becomes a factor when using police report data for crashes. In some cases, police do not fill out the

crash report with road and weather conditions until the end of the day, when memories of the event could become hazy. Lastly, each metric's data set could leave out certain roadway segments that are included in others. This has the possibility of not providing enough weight to roadway corridors with missing data.

More research is needed in creating a statistical validation of corridor worthiness, in order to keep up with the data-driven results mantra of the emerging transportation field. This will allow for a revised algorithm with a higher level of public and professional acceptance. A continuation of the conceptual framework algorithm to full implementation of VSLs should be created in order to have a full perspective, from concept through implementation of the entire VSL selection process.

APPENDIX A
FOCUS GROUP MODERATOR'S GUIDE

Innovative Speed Management: Speed Selections and Perspectives
November 2014
Ongoing Research by C. Harrington, University of Massachusetts

Moderator: Robin Riessman

I. Introduction (10 minutes)

Purpose: The moderator greets the participants and explains the objectives of FG. Setting the rules. Participants meet each other. Everyone says something, contributing to social facilitation.

- Moderator's introduction and ground rules.

Hello, my name is Robin, and I am the moderator for this discussion. *[Brief intro of you, what your job is, and how you're helping Curt out with this as a part of his master's thesis]* My job is to move the conversation along and make sure that we cover several discussion points and to ensure that everyone here gets involved.

The purpose of this session is to investigate the effectiveness of a form of speed management that has peaked interest at the federal level. As you will see, there are no right or wrong answers to any of the questions or survey responses. The purpose is to find out what your personal opinions are, and everyone's opinion is equally important to us.

Respect for opinions. In fact, you may find that you disagree with an opinion voiced here by another person. That is OK, and I hope you will say so when that happens in a respectful and polite way. You also may change your mind in the

middle of our discussion, perhaps as a result of something that someone else says, and again I hope you will say so, if and when that happens.

Important rule: one person speaking at one time. Because we want to respect everyone and make sure that everyone is heard, we have one basic rule in this session – we will allow only one person to speak at a time. We want to have an organized session, and in order to do this, I ask that you respect the person who is speaking, and wait for him/her to finish his/her thoughts.

Confidential/anonymous research. This discussion is completely anonymous and confidential. There will be no record of what you say with your name on it. We are not going to quote anyone specifically using her/his name. I have this small tape recorder, like a journalist, so that I can be sure that I capture your words accurately, but no one will know which person says any specific statement. We are using a tape recorder because your opinions are very important to us, and we need to know what you said. No names will be associated with the comments and the tape will be destroyed after the project is finished. Is it ok with everyone that we are taping this?

- You are here to represent other people who are not in the room - share your views
- Speak up, your opinion is important to us
- Curt is here, he will be preparing the analysis as a part of his master's thesis

- Everyone comfortable – we understand this is unusual, but think you will find it interesting
- **Participant introductions.** Let's go around the room - tell us something about yourself - first name only, where you're from, and something you like or don't like about anything transportation or driving related. Please keep it brief so we can move on to some of the more interesting questions!

➤ *[MODERATOR SHOULD BEGIN, WITH A VERY BRIEF REFERENCE]*

II. Static Survey (5 minutes)

Purpose: To capture participants' speed selections and what they think other drivers' speed selection would be in various pictured scenarios. Please note that the participants are still unaware of the main topic of FG (variable speed limits).

There will be a brief 5 minute survey accompanied by powerpoint slides before we get into discussion. Please speak up if you cannot clearly see the powerpoint pictures. Each slide will be numbered and the numbers correspond

with the numbered rows on your survey sheets. Each slide will only be shown for about 10 seconds- all you need to do is write down what speed you think you would travel, and then what speed you think other drivers would travel during each scenario. Please be candid with your answers- we really would like to know what speed you think you would be going, not what speed you think you should be going. Let's begin.

[Curt will hand out survey sheets and get powerpoint set up]

III. Scenario Comparisons (30 minutes)

Purpose: To gain insight into why and how participants chose their speeds for the various scenarios shown. Special consideration should be placed on how the roadway infrastructure is influencing their choices. This will help isolate critical factors in optimizing compliance to variable speed limits. A second set of slides will help compare previously shown scenarios. Feel free to give participants a minute to share any immediate thoughts or comments they had on the static evaluation. You can switch back to previous slides if they wish to see them again.

Slides 21 and 22

Questions for tri-scenario slide:

- 1) What factors in these scenarios would influence your speed choice? What is most important in deciding what speed you chose for yourself?

PROMPT: Are there certain aspects in the roadway and/or speed limit signs that influence your choices?

PROMPT: How did the **location** (overhead or side of roadway) of the sign affect your thought process? What about **regular** speed limit sign **versus** one that was **electronic**? The number of **lanes** in the road? With or without **warning** message? With **rain**? What about when the speed limit changed between 65, 55, and 45?

- 2) If there were to be electronic speed limits installed on a local highway, which type do you feel you would be most likely to comply with?

(overhead or side mount? On a 3 lane or 2 lane highway? With warning message or not? How would traffic conditions and weather effect your compliance?)

Slide 22 – Are there any different factors here that would impact your choice of speed? Roadway? Signage message? Weather?

Slide 23 - How do the changes in speed limit value (45, 55, 65 mph) here affect what speed you choose? Why?

Slide 24 – Which of these would you drive the slowest? Fastest? Why?

IV. Opinions and Perspectives (30 minutes)

Purpose: This is where you will finally give them a description of what a variable speed limit is and what its purpose is. After a brief description, we will get into their individual beliefs and perspectives on variable speed limits. This will attempt to get a more casual and opinionated discussion going. Do they generally approve of the idea? What if there was a system that optimized where they could work more efficiently?

You will define a variable speed limit:

Many of the photos you have just seen included electronic and dynamically changing speed limit signs. These signs are called ‘variable speed limits, abbreviated as ‘VSL’; they are able to change the speed limit during real-time roadway condition changes. For example, if there was suddenly stopped traffic 1 mile ahead from the VSL, it would theoretically be able to lower the speed limit before the heavy traffic to smooth and slow down driving speeds to avoid high speed rear end collisions and improve traffic flow. VSLs have been installed in multiple locations in Europe, and have been installed somewhat recently in a few states in the U.S.

1) So, what are your general opinions on the idea of variable speed limits?

PROMPT: Do you think they would be effective? DO you think other people feel similarly to you? Why or why not?

- 2) Right now there is no data driven way to decide where to put variable speed limit signs vs regular speed limit signs to be most effective. If there was a clear process to determine where these signs would be most effective (for safety, traffic flow etc), would that change your opinion on variable speed limit signs or does this not matter.
- 3) Would you approve of federal or state spending on them? Why/Why not? (If timing is tight, skip this one)

V. Wrap-Up (5-10 minutes)

Purpose: This will wrap up the discussion and attempt to tie everything back together.

You may ask if there are things that could improve the discussion for our next group.

Curt can give a debriefing about how the discussion will help put together his thesis.

- 1) Is there anything that was not discussed regarding variable speed limits that you are interested in or concerned about? Is there anything that could improve your compliance to a VSL that hasn't been presented here today?
- 2) What was your overall impression of the discussion today?

So that concludes our discussion on variable speed limits for today. Thank you so much for your cooperation and perspectives! Have a great day.

APPENDIX B
SPEED SELECTION SURVEY

Scenario	What speed would you go? (mph)	What speed would others go? (mph)	Scenario	What speed would you go? (mph)	What speed would others go? (mph)
1			10		
2			11		
3			12		
4			13		
5			14		
6			15		
7			16		
8			17		
9					

Speed Selection Scenarios

You will have 10 seconds/slide to view each scenario and record your speed choices. Ready?

© Curt P. Harrington

11/12/2014 • 1

1.





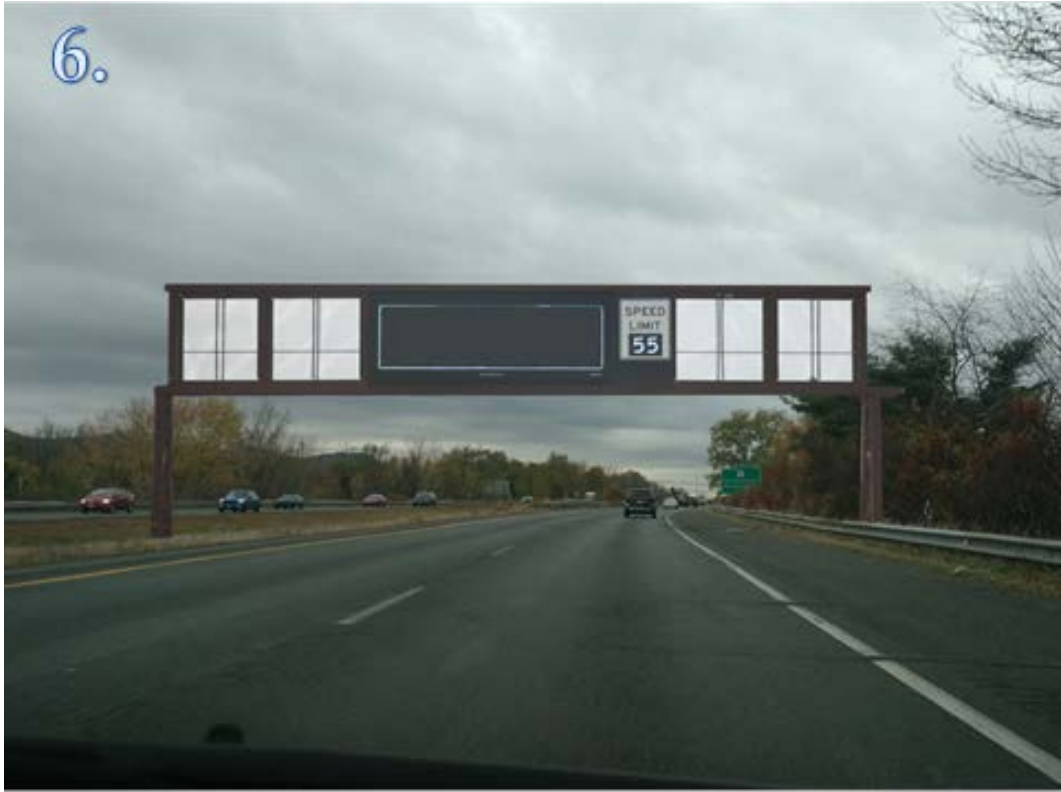
4.



5.



6.



7.



8.



9.



10.



11.



12.



13.



14.



15.



16.



17.



End of survey section.

• Scenario 1

11/12/2014 • 1

Discussion slides

• Scenario 1

11/12/2014 • 1



What factors in these scenarios influence your speed choices?

• Scenario 1



What factors in these scenarios influence your speed choices?

• Scenario 1





Scenario 1



Scenario 1



REFERENCES

- (1) “Engineering Speed Limits.” *FHWA Safety Program*.
http://safety.fhwa.dot.gov/speedmgmt/eng_spd_lmths/. Accessed December 9, 2013.
- (2) “FAQs: Transport.” *International Energy Agency*. 2013. <http://www.iea.org/aboutus/faqs/transport/>. Accessed December 10, 2013.
- (3) “Integrating Safety in Developing a Variable Speed Limit System.” National Center for Transportation. <http://nctspm.gatech.edu/pi/integrating-safety-developing-variable-speed-limit-system>. Accessed December 11, 2013.
- (4) Hawkins Jr., H., W. S. Wainwright, and Samuel C. Tignor. Innovative Traffic Control Practices in Europe, Public Roads, Vol. 63, No. 2, 1999, pp. 10-15.
- (5) Papageorgiou, Markos, Elias Kosmatopoulos, and Ioannis Papamichail. Effects of Variable Speed Limits on Motorway Traffic Flow. *Transportation Research Record: Journal of the Transportation Research Board* 2047.1 (2008): 37-48. Print.
- (6) Examples of Variable Speed Limit Applications. Speed Management Workshop. TRB 79th Annual Meeting Jan 9 2000.
- (7) Rämä, Pirkko. Effects of Weather-Controlled Variable Speed Limits and Warning Signs on Driver Behavior. *Transportation Research Record* 1689.1 (1999): 53-59. Print.
- (8) Lee, Chris, Bruce Hellinga, and Frank Saccomanno. Assessing Safety Benefits of Variable Speed Limits. *Transportation Research Record* 1897.1 (2004): 183-90. Print.
- (9) Li, Z., S. Ahn, K. Chung, D. R. Ragland, W. Wang, and J. W. Yu, “Surrogate safety measure for evaluating rear-end collision risk related to kinematic waves near freeway recurrent bottlenecks.” *Accid. Anal. Prev.*, vol. 64, pp. 52–61, Mar. 2014.
- (10) Germà Bel and Jordi Rosell. Effects of the 80 km/h and variable speed limits on air pollution in the metropolitan area of barcelona. *Transportation Research Part D: Transport and Environment* 23 (2013) 90-97. Print.
- (11) V. Sabawat and R. K. Young, “Control Strategy for Rural Variable Speed Limit Corridor,” *Transp. Res. Rec. J. Transp. Res. Board*, vol. 2329, no. -1, pp. 31–44, Dec. 2013.

- (12) R. Yu and M. Abdel-Aty, "Analyzing crash injury severity for a mountainous freeway incorporating real-time traffic and weather data," *Saf. Sci.*, vol. 63, pp. 50–56, Mar. 2014.
- (13) C. Lee, B. Hellinga, and F. Saccomanno, "Evaluation of variable speed limits to improve traffic safety," *Transp. Res. Part C Emerg. Technol.*, vol. 14, no. 3, pp. 213–228, Jun. 2006.
- (14) Abdel-Aty, M., and Pemmanabonia, R. Calibrating a Real-Time Traffic Crash-Prediction Model Using Archived Weather and ITS Traffic Data. *IEEE Transactions on Intelligent Transportation Systems* 7. 2 (2006): 167–174.
- (15) Kononov, Jake, Catherine Durso, David Reeves, and Bryan Allery. Relationship Between Traffic Density, Speed, and Safety and Its Implications for Setting Variable Speed Limits on Freeways. *Transportation Research Record: Journal of the Transportation Research Board* 2280.1 (2012): 1-9. Print.
- (16) Z. Zheng, "Empirical Analysis on Relationship between Traffic Conditions and Crash Occurrences," *Procedia - Soc. Behav. Sci.*, vol. 43, pp. 302–312, Jan. 2012.
- (17) "Transportation Planning Documents | 2013 Localized Bottleneck Reduction Program Progress Report." *Transportation Planning Documents | Central Massachusetts Regional Planning Commission (CMRPC)*. Central Massachusetts Regional Planning Commission (CMRPC), 1 Sept. 2013. <http://www.cmrpc.org/transportation-planning-documents>. Accessed April 11, 2014.
- (18) A. Montella, "A comparative analysis of hotspot identification methods." *Accid. Anal. Prev.*, vol. 42, no. 2, pp. 571–81, Mar. 2010.
- (19) Loo, Becky P.K. "Validating crash locations for quantitative spatial analysis: A GIS-based approach." http://ac.els-cdn.com/S0001457506000297/1-s2.0-S0001457506000297-main.pdf?_tid=037c201c-b437-11e3-8ecd-. Accessed April 12, 2014.
- (20) P.-F. Kuo, D. Lord, and T. D. Walden, "Using geographical information systems to organize police patrol routes effectively by grouping hotspots of crash and crime data," *J. Transp. Geogr.*, vol. 30, pp. 138–148, Jun. 2013.
- (21) Texas A&M Transportation Institute, "Variable Speed Limits" <http://mobility.tamu.edu/mip/strategies-pdfs/active-traffic/technical-summary/Variable-Speed-Limit-4-Pg.pdf>. Accessed April 14, 2014.
- (ALs) *Guidelines for Master's Theses and Doctoral Dissertations*. Office of Degree Requirements, Graduate School University of Massachusetts Amherst: s.n., Revised November 2010.