



All Theses and Dissertations

---

2017-12-01

# Clinical Predictors of Movement Patterns in Patients with Chronic Ankle Instability

Seong Jun Son  
*Brigham Young University*

Follow this and additional works at: <https://scholarsarchive.byu.edu/etd>

 Part of the [Exercise Science Commons](#)

---

## BYU ScholarsArchive Citation

Son, Seong Jun, "Clinical Predictors of Movement Patterns in Patients with Chronic Ankle Instability" (2017). *All Theses and Dissertations*. 6618.

<https://scholarsarchive.byu.edu/etd/6618>

This Dissertation is brought to you for free and open access by BYU ScholarsArchive. It has been accepted for inclusion in All Theses and Dissertations by an authorized administrator of BYU ScholarsArchive. For more information, please contact [scholarsarchive@byu.edu](mailto:scholarsarchive@byu.edu), [ellen\\_amatangelo@byu.edu](mailto:ellen_amatangelo@byu.edu).

Clinical Predictors of Movement Patterns in Patients with Chronic Ankle Instability

Seong Jun Son

A dissertation submitted to the faculty of  
Brigham Young University  
in partial fulfillment of the requirements for the degree of

Doctor of Philosophy

Ty Hopkins, Chair  
Dustin Bruening  
Brent Feland  
Shane Reese  
Matthew Seeley

Department of Exercise Sciences

Brigham Young University

Copyright © 2017 Seong Jun Son

All Rights Reserved

## ABSTRACT

### Clinical Predictors of Movement Patterns in Patients with Chronic Ankle Instability

Seong Jun Son

Department of Exercise Sciences, BYU

Doctor of Philosophy

**BACKGROUND:** Chronic ankle instability (CAI) patients have varying levels of mechanical and sensorimotor impairments that may lead to disparate functional movement patterns. Current literature on landing biomechanics in a CAI population, however, considers all patients as a homogeneous group. In our prior work, we identified 6 subgroups of movement patterns using lower extremity kinematics during a landing/cutting task and that showed promise in furthering understanding of movement patterns in a laboratory-based environment. To increase the utility of this methodology in clinical settings, there is a need to find easily administered clinical tests that can help identify multiple subgroups of movement patterns in a CAI population. The purpose of the present study was to identify clinical tests that would help identify frontal and sagittal kinematic movement pattern subgroups during a landing/cutting task. We hypothesized that clinical tests would help predict group assignment; which CAI patient is assigned to frontal and sagittal kinematic movement pattern subgroups, respectively. **METHODS:** We recruited 100 CAI patients from a university population. We used three-dimensional instrumented motion analysis to capture ankle, knee and hip kinematics as subjects performed a single-leg maximal jump landing/cutting task. We used sagittal and frontal joint angle waveforms to group CAI patients. We then used 12 demographic and clinical measures to predict these subgroups of CAI. These consisted of gender, Star Excursion Balance Test-Anterior (SEBT-ANT), Biodex static balance, figure 8 hop, triple crossover hop, dorsiflexion range of motion (DFROM), number of failed trials, body mass index, a score of Foot and Ankle Ability Measure-Activities of Daily Living (FAAM-ADL), a score of FAAM-Sports, number of “yes” responses on Modified Ankle Instability Index, and number of previous ankle sprains. First, we used functional principal component analysis to create representative curves for each CAI patient and plane from the 3 lower extremity joint angles. We then used these curves as inputs to a predictor-dependent product partition model to cluster each CAI patient to unique subgroups. Finally, we used a multinomial prediction model to examine the accuracy of predicting group membership from demographic and clinical metrics. **RESULTS:** The predictor-dependent product partition model identified 4 frontal and 5 sagittal movement pattern subgroups. Six predictors (e.g., gender, SEBT-ANT, figure 8 hop, triple crossover hop, DFROM, and FAAM-ADL) predicted group membership with 55.7% accuracy for frontal subgroups. Ten predictors (minus Biodex static balance and number of previous ankle sprains) predicted group membership with 59% accuracy for sagittal subgroups. **CONCLUSION:** Novel statistical analyses allowed us to predict group membership for multiple frontal and sagittal kinematic movement patterns during landing/cutting using a series of clinical predictors. However, due to relatively lower accuracy (56–59% accuracy), the clinical utility of the current prediction model may be limited. Future work should consider including other clinical predictors to maximize prediction accuracy for identifying multiple kinematic movement patterns during a landing/cutting task.

**Keywords:** Ankle sprains, prediction, functional test, Bayesian model, landing

## ACKNOWLEDGEMENTS

I would not have been able to complete my dissertation work without the guidance of my committee members, my colleagues, statisticians, and support from research assistants.

I would like to express my appreciation to my advisor Dr. Ty Hopkins for his excellent guidance and for providing me with a tremendous atmosphere for doing research. His support helped me to grow as a researcher and more importantly as a good person. Besides my advisor, I would also like to express my appreciation to dissertation committee members, Drs. Dustin Bruening, Brent Feland, Shane Reese and Matthew Seeley for their insightful comments and suggestions. I also want to thank Dr. Garritt Page for statistical analyses.

I would like to thank my undergraduate research assistants: Jordan Reed, Philip Hamilton, James Mitchell, Cameron Hadley, Joseph Mills, Kade Eppich, Hyeri Gonzales, Jake Roush, Brandon Winward, Trevor Fuhriman, Preston Danielson, Drew Harris, Zach Quinn, Cody Perry, Brandon Kyle, and Kaitland Garner for their tremendous support and help during data collection.

Lastly, I would like to thank my family and especially my wife, Woonhee Sung, who always supported me and encouraged me with best wishes.

## TABLE OF CONTENTS

Title Page .....	i
Abstract .....	ii
Acknowledgements.....	iii
Table of Contents .....	iv
List of Tables .....	vi
List of Figures .....	vii
Introduction.....	1
Methods.....	4
<i>Research Design</i> .....	4
<i>Subjects</i> .....	5
<i>Experimental Procedures</i> .....	6
<i>Clinical Test Procedures</i> .....	7
<i>The Rationale for 12 Clinical Predictors for the Current Study</i> .....	10
<i>Single-Leg Maximal Vertical Forward Jump Landing/Cutting Task</i> .....	11
<i>Motion Analysis</i> .....	12
<i>Data Processing</i> .....	13
<i>Functional Statistical Analysis</i> .....	13
Results.....	16
<i>Characteristics of Frontal Kinematic Movement Pattern Clusters</i> .....	16
<i>Prediction Model Accuracy for Frontal Kinematic Movement Pattern Clusters</i> .....	17
<i>Characteristics of Sagittal Kinematic Movement Pattern Clusters</i> .....	17
<i>Prediction Model Accuracy for Sagittal Kinematic Movement Pattern Clusters</i> .....	18

Discussion.....	18
<i>The Importance of Identifying Multiple Movement Patterns in a CAI Population.....</i>	<i>19</i>
<i>Multinomial Regression for Prediction Model Accuracy for Frontal and Sagittal Clusters ..</i>	<i>21</i>
<i>Characteristics of Sagittal Kinematic Movement Pattern Clusters .....</i>	<i>23</i>
<i>Characteristics of Frontal Kinematic Movement Pattern Clusters .....</i>	<i>25</i>
<i>High vs. Low Characteristics Between Frontal and Sagittal Clusters .....</i>	<i>26</i>
<i>Clinical Implications.....</i>	<i>29</i>
<i>Limitations of the Study .....</i>	<i>30</i>
Conclusions.....	31
References.....	33

LIST OF TABLES

Table

1. Subject Demographics .....42

2. Post Hoc Pairwise Comparisons Between Frontal Kinematic Movement Pattern Clusters ....43

3. Characteristics for Each of 4 Frontal Kinematic Movement Pattern Clusters.....44

4. Multinomial Regression of Prediction Model Accuracy for Frontal Kinematic Clusters .....45

5. Post Hoc Pairwise Comparisons Between Sagittal Kinematic Movement Pattern Clusters ...46

6. Characteristics for Each of 5 Sagittal Kinematic Movement Pattern Clusters .....47

7. Multinomial Regression of Prediction Model Accuracy for Sagittal Kinematic Clusters.....48

## LIST OF FIGURES

### Figure

1.	Single-leg maximal vertical forward jump landing/cutting task.....	49
2.	Frontal ankle, knee, and hip joint angles during landing/cutting.....	50
3.	Frontal kinematic probability for the number of frontal clusters.....	51
4.	Frontal kinematic representative curves for 100 CAI subjects.....	52
5.	Frontal kinematic representative curves for each of 6 frontal clusters .....	53
6.	Sagittal ankle, knee, and hip joint angles during landing/cutting.....	54
7.	Sagittal kinematic probability for the number of sagittal clusters .....	55
8.	Sagittal kinematic representative curves for 100 CAI subjects .....	56
9.	Sagittal kinematic representative curves for each of 5 sagittal clusters.....	57
	Figure Captions.....	58



## INTRODUCTION

The ankle is the second most-injured joint in the body, and ankle sprains account for approximately 15% of all sport injuries.<sup>1,2</sup> More than 25,000 ankle sprains occur daily in the U.S. which is equivalent to 1 in every 10,000 people,<sup>3</sup> costing the U.S. an estimated \$2 billion annually for treatment.<sup>4</sup> One in every 3 individuals who sustains an ankle sprain suffers from repeated ankle sprains.<sup>5</sup> Despite a high recurrence rate, approximately 55% of ankle sprains are not treated by healthcare professionals.<sup>6</sup> Up to 74% of patients 2 years postinjury still reported at least one residual symptom (e.g., pain, swelling, weakness, instability, etc.).<sup>5</sup> Researchers suggest that 70–85% of patients suffering ankle sprain injuries go on to develop chronic joint degenerative diseases such as posttraumatic ankle osteoarthritis.<sup>7-11</sup> Even though surgical and nonsurgical management of posttraumatic ankle injury and arthritis have been administered, and the interventions may be effective in managing the symptoms of the injury,<sup>12,13</sup> no effective interventions have been identified to prevent the progression of ankle osteoarthritis.<sup>14,15</sup>

Chronic ankle instability (CAI) is a condition characterized by chronic residual symptoms including pain, swelling, loss of function, joint instability, a feeling of “giving way,” and/or recurrent ankle sprains.<sup>16,17</sup> Delahunt et al<sup>18</sup> characterized CAI as “an encompassing term used to classify a subject with both mechanical and functional instability.” Mechanical ankle instability is related to mechanical impairments including pathological laxity,<sup>19,20</sup> arthrokinematic restrictions (e.g., a positional fault of the talus<sup>21,22</sup> or fibula<sup>23,24</sup>), osteokinematic restrictions (e.g., restricted dorsiflexion<sup>25-27</sup>), degenerative articular changes<sup>28,29</sup> and/or synovial changes.<sup>30,31</sup> Functional ankle instability is associated with sensorimotor impairments including diminished proprioception,<sup>32-34</sup> slower reflex reactions,<sup>35-37</sup> arthrogenic muscle inhibition,<sup>38</sup> diminished strength<sup>39,40</sup> and/or impaired postural control<sup>41,42</sup> through spinal and/or supraspinal

pathways.<sup>43,44</sup> It is believed that any single or any combination of the aforementioned mechanical and/or sensorimotor impairments would result in altered movement patterns during walking,<sup>35,36,45,46</sup> running,<sup>26,27,46</sup> landing<sup>47-51</sup> or cutting.<sup>47,52,53</sup> when compared to healthy controls and/or ankle sprain copers.<sup>54</sup>

It is believed that initial ligament damage and impaired sensory pathways to the central nervous system result in structural changes and spinal reflex inhibition, which further leads to altered joint loads and altered movement patterns during various functional tasks (e.g., walking, running, landing, cutting, etc.).<sup>55,56</sup> Altered movement patterns have been reported across various phases of ankle sprain injury. Specifically, patients with a first-time acute ankle sprain at 2 weeks postinjury revealed altered landing patterns (e.g., 10% reduction in peak vertical impact and 6° increased hip flexion angle).<sup>57</sup> Patients with a first-time ankle sprain at 6 months postinjury exhibited 5° more ankle inversion and 5° more hip flexion angle during single-leg drop landing.<sup>58</sup> Patients with CAI appeared to: (i) walk with a more laterally deviated center of pressure trajectory during stance<sup>36</sup>; 2.5–3° more inversion angle during stance<sup>45,59</sup> and 2.9° less dorsiflexion angle during stance<sup>27</sup>; (ii) land with 2.5–3° less dorsiflexion angle during stance<sup>47,48</sup>; and (iii) run with a 4.8° less dorsiflexion angle during stance<sup>26</sup> and 3.9–4.8° less eversion angle during stance.<sup>27</sup> These altered movement patterns are thought to predispose CAI patients to recurrent ankle sprains due to a more injury-prone and loose-packed position of the foot. Further, altered joint loads, due to altered movement patterns as a postinjury compensatory adaptation, over the long-term may initiate the onset of ankle articular cartilage degeneration.<sup>7,8</sup>

In CAI research, subjects with CAI are selected in accordance with the consensus statement of selection criteria defined in the International Ankle Consortium.<sup>60</sup> For example, studies have identified CAI subjects using valid and reliable self-reported questionnaires.<sup>61,62</sup>

Because of this self-reported subject inclusion method, a CAI population is considered homogeneous. However, the current method does not consider potential individual variability of mechanical and sensorimotor impairments, which could potentially lead to conflicting results between studies, as demonstrated by varied findings in a single outcome measure showing greater inversion kinematics,<sup>49,63,64</sup> less inversion kinematics,<sup>47</sup> or no difference in frontal ankle kinematics<sup>48,50,53</sup> during the same or similar landing tasks. According to the Dynamic Systems Theory,<sup>65</sup> each CAI patient would have a different severity level of mechanical and/or sensorimotor impairments following ankle sprain injury based on the interaction of organismic, task and environmental constraints.<sup>56</sup> This speculation led us to consider multiple movement patterns during landing in CAI patients who were selected using subjective self-reported questionnaires. Our prior unpublished work (n = 300 patients with CAI) identified 6 kinematic movement patterns during landing/cutting. However, we conducted our recent study in a research laboratory-based setting using high-speed video cameras and force plates, which limited the clinical practicality in clinical settings in identifying multiple movement patterns during landing. Therefore, there is a need to find clinical (or functional performance) tests that would help identify multiple movement patterns in a CAI population to increase its clinical utility. In this study, we selected 12 clinical predictors. Five predictors were clinical tests that are used in clinical settings such as a Star Excursion Balance Test-Anterior (SEBT-ANT), Biodex balance (static athlete single-leg overall stability index), figure 8 hop for time, triple crossover hop for distance, and dorsiflexion range of motion (DFROM). Along with the 5 clinical tests, we selected 7 clinical predictors to help predict group membership into certain kinematic movement pattern clusters including gender, number of failed trials during the clinical tests, body mass index (BMI), perceived instability scores on self-reported questionnaires (Foot and Ankle Ability

Measure-Activities of Daily Living [FAAM-ADL], FAAM-Sports subscale, and Modified Ankle Instability Index [MAII]), and number of previous ankle sprains.

This study aimed to identify multiple movement pattern clusters during jump landing/cutting from 100 patients with CAI and to find clinical predictors that would help identify multiple movement clusters. Based on the success of our recent unpublished work on movement pattern clusters, we hypothesized that each CAI patient would show an independent kinematic movement pattern during the task, based on the curve's shape of lower extremity joint kinematics and values of 12 clinical predictors, and that we would identify multiple kinematic movement pattern subgroups (or clusters). We also hypothesized that clinical predictors would help predict kinematic movement clusters to which each CAI patient would be assigned—either frontal or sagittal movement pattern subgroups, respectively.

## METHODS

### *Research Design*

This study was a controlled laboratory trial. Each subject reported to the biomechanics laboratory for 2 sessions, 2–3 days apart. The first session was a practice session to familiarize subjects with the clinical tests (e.g., SEBT-ANT, Biodex static balance, figure 8 hop, triple crossover hop, and DFROM). Subjects performed 6 practice trials of each clinical test, which took about 40 minutes. The purpose of the practice session was to minimize learning and fatigue effects on clinical tests. Multiple trials of the hop tests would be too demanding to perform practice and testing trials in the same day. The second session was a testing data collection session where each subject performed 3 testing trials of each clinical test followed by 10 trials of single-leg maximal vertical forward jump landing/cutting. Total time for the data collection session was about 2 hours. Independent variables were (i) lower extremity frontal and sagittal

kinematics during landing/cutting and (ii) values of 12 clinical predictors: gender, SEBT-ANT reach distance (% of leg length), Biodex static balance (single-leg overall stability index), figure 8 hop for time (sec), triple crossover hop for distance (m), DFROM (deg), number of failed trials, BMI ( $\text{kg}/\text{m}^2$ ), FAAM-ADL (%), FAAM-Sports (%), MAII (number of “yes” responses on questions 4–8; a feeling of instability during functional tasks), and number of previous ankle sprains. Dependent variables were (i) multiple movement pattern clusters, (ii) results of post hoc pairwise comparisons and group characteristics (% of values), and (iii) prediction model accuracy for frontal and sagittal kinematic movement pattern clusters, respectively.

### *Subjects*

One hundred patients with CAI, recruited from a university population, participated in this study. Table 1 contains subject demographics. Subjects were identified in accordance with endorsed inclusion and exclusion criteria for CAI defined in the International Ankle Consortium.<sup>60</sup> Subjects were selected using self-reported function questionnaires including a FAAM-ADL,<sup>61</sup> FAAM-Sports,<sup>61</sup> and MAII.<sup>62</sup> Specific subject inclusion criteria included (i) a history of at least one significant ankle sprain with a first sprain 12 months before the study enrollment, and the injury was related to inflammatory symptoms (e.g., pain, swelling, etc.) and created at least one interrupted day of desired physical activity, (ii) a history of at least 2 “giving way” episodes in the past 6 months and at least 2 “yes” responses on questions 4–8 on the MAII, (iii) a score of < 90% on the FAAM-ADL and < 80% on the FAAM-Sports, and (iv) a history of a moderate level of weight-bearing physical activity at least 3 days per week for a total of 90 min in the previous 3 months. Specific subject exclusion criteria included (i) a history of lower extremity surgeries to the musculoskeletal structures (e.g., bones, joint structures, and nerves), (ii) a history of a fracture in lower extremity, and/or (iii) acute musculoskeletal injury to lower

extremity joints in the previous 3 months. Thirty-four CAI subjects had unilateral ankle sprains and the remaining 66 CAI subjects had bilateral ankle sprains. For subjects with bilateral ankle sprains, the subject chose the involved limb based on a greater perceived feeling of instability. The Institutional Review Board (F16455) approved this study and each subject provided informed consent prior to the study enrollment.

### *Experimental Procedures*

Each subject visited the biomechanics laboratory 2–3 days prior to testing data collection to become familiar with 5 clinical tests (e.g., SEBT-ANT, Biodex static balance, figure 8 hop, triple crossover hop, and DFROM). We instructed subjects to wear their own athletic shorts, shirts and shoes and performed 6 trials of each clinical test for practice. Subjects reported back to the biomechanics laboratory 2–3 days later for testing data collection. After changing into athletic spandex clothing (HeatGear, Under Armour, Baltimore, MD) provided by investigators, subjects performed 3 trials of each clinical test in a random order to reduce the order effect. Subjects performed 3 clinical tests barefoot (e.g., SEBT-ANT, Biodex static balance, and DFROM) and performed 2 clinical tests (e.g., figure 8 hop and triple crossover hop) with athletic shoes (T-Lite XI, Nike, Beaverton, OR), provided by investigators. There was a 3-minute rest between each clinical test to minimize fatigue effects and a 30-second rest between each trial. Upon completion of the clinical tests, subjects performed 10 trials of a single-leg maximal vertical forward jump landing/cutting task (Figure 1).

### *Clinical Test Procedures*

For a SEBT-ANT measure,<sup>66-68</sup> subjects performed 3 trials of the test barefoot in an anterior direction. We instructed subjects to place the tested foot on a tape measure (cm) and to perform maximal anterior direction reaches with the opposite foot followed by a single, light toe touch on the tape measure while keeping both hands on their waist. Failed trials were counted if the hands did not remain on their waist, the position of the stance foot was not maintained, the heel did not remain on the floor, or subjects did not maintain a single-leg stance position during the test. Subjects performed the test until they completed 3 successful trials. Distances were measured in cm (nearest 0.5 cm) and normalized by dividing by the subject's lower limb length (e.g., from anterior superior iliac crest to distal end of the medial malleolus) and multiplying by 100 (% of leg length).<sup>67</sup> As subjects had the practice session 2–3 days prior, subjects performed 1 practice trial and 3 testing trials. There was a 30-second rest between each trial. The mean of the best 2 trials was used for data analysis. The previous study demonstrated that the intraclass correlation coefficient (ICC) for intra-rater (between sessions) reliability for SEBT-ANT was 0.92, confidence interval (CI: 0.86–0.96), and the ICC for inter-rater (between assessors) reliability was 0.88 (CI: 0.80–0.94).<sup>69</sup>

For an ankle DFROM measure,<sup>25,70,71</sup> the test was performed using the knee-to-wall measurement in which subjects were instructed to stand facing a wall with the tested foot parallel with a tape measure secured to the floor with the second toe, center of the heel and knee perpendicular to the wall while placing their hands on the wall and the opposite limb approximately 1 foot-length behind. Subjects performed a forward lunge in which both knees were flexed, but the knee in the tested limb was required to contact the wall while keeping the heel planted on the floor. Subjects performed the test until they achieved maximum distances

from the wall and continued to maintain knee contact without lifting the heel. A digital inclinometer (Digital Protractor Angle Finder Level Inclinometer Magnetic V-Groove, RISEPRO, Amazon, Seattle, WA) was used to measure DFROM, and the top edge of the inclinometer was aligned with the tibial tuberosity.<sup>72</sup> Subjects performed 1 practice trial and 3 testing trials. There was a 30-second rest between each trial. We used the mean of the best 2 trials for data analysis. The previous study showed that the ICCs for intra-rater reliability for the digital inclinometer was 0.98 (CI: 0.95–0.99), and the ICCs for inter-rater reliability was 0.90 (CI: 0.43–0.97).<sup>70,72</sup>

For a Biodex Balance System measure,<sup>73,74</sup> static athlete single-leg overall stability index was used to quantify single-leg static postural control as a sum of anterior-posterior and medial-lateral stability index. Subjects performed the test barefoot on the Biodex platform. We instructed subjects to maintain a single-leg stance position with the tested limb in full knee extension while holding the opposite knee to 90° flexion and keeping both hands on their waist. We instructed subjects to position the tested foot at the center of the platform, to look ahead at the visual feedback display, adjusted at their eye level to prevent vestibular distraction and head movement, while adjusting their foot position to a comfortable standing position and maintaining the moving pointer at or near the center point of the visual feedback display. The position of the foot remained constant throughout the static balance test. Subjects performed 1 practice trial and 3 testing trials. Each trial was 3 sessions for 20 seconds each (a total of 9 individual testing trials per subject). There was a 30-second rest between each trial. During the 30-second rest, subjects were encouraged to bear their weight on the opposite limb to minimize fatigue on the tested limb. The mean of the best 2 trials of static athlete single-leg overall stability index was used for data analysis, which was automatically calculated by the Biodex Balance System. The previous



study revealed that the ICC for intra-rater reliability was 0.85 (CI: 0.61–0.94) regarding static athlete single-leg overall stability index.<sup>73</sup>

For a figure 8 hop for time (seconds) measure,<sup>75</sup> subjects performed the test with athletic shoes. We instructed subjects to maintain a single-leg stance position on the tested limb only while holding the opposite knee to 90° flexion. Subjects performed a single-leg hop twice as quickly as possible on a 5-m course outlined by 2 cones in a figure 8 pattern. An investigator recorded the total time with a handheld stopwatch to the nearest 0.01 sec. We used a 50-cm long plastic stick adjusted at subject's chest level, to determine when subjects crossed the finish line. Failed trials were counted if subjects put the contralateral limb down, fell, touched the cones, or did not complete the course twice. Subjects performed the test until they completed 3 successful trials. Subjects performed 1 practice trial and 3 testing trials. There was a 1-minute rest between each trial. We used the mean of the best 2 trials for data analysis. The previous study showed that the ICC for inter-rater reliability was 0.95 (standard error of measurement 1.66 seconds).<sup>76</sup>

For a triple crossover hop for distance (m) measure,<sup>77,78</sup> subjects performed the test with athletic shoes. We instructed subjects to maintain a single-leg stance position on the tested limb only, while their opposite knee was flexed to 90°. Subjects performed 3 consecutive hops on the tested limb in a zigzag pattern, crossing over a 15-cm wide line on the floor as a maximal effort. The first and final hops were towards the lateral side of the tested limb. We measured the distance using a tape measure (nearest 0.01 m) from the start line to where the heel landed on the third hop. Failed trials were counted if subjects put the contralateral limb down, fell, touched the 15-cm wide tape, or did not complete the test. Subjects performed the test until they completed 3 successful trials. Subjects performed 1 practice trial and 3 testing trials. There was a 1-minute rest between each trial. We used the mean of the best 2 trials for data analysis. The previous

studies reported that the ICC for inter-rater reliability was 0.94–0.96; no studies reported 95% CIs.<sup>79-81</sup>

### *The Rationale for 12 Clinical Predictors for the Current Study*

Based on the success of our unpublished work on identifying multiple kinematic movement patterns (6 movement pattern clusters from 200 CAI patients), this study leveraged previous findings to identify kinematic movement pattern clusters using values of clinical predictors. As such, we selected 12 clinical predictors including gender, SEBT-ANT, Biodex static balance (athlete single-leg overall stability index), figure 8 hop for time, triple crossover hop for distance, DFROM, number of failed trials, BMI, FAAM-Sports score, FAAM-ADL score, MAII responses (“yes” responses on questions 4–8) and number of previous ankle sprains. We selected each predictor based on whether the predictor might be directly or indirectly associated with risk factors for CAI. Specifically, gender was included in this study because there were gender differences between males and females for functional performance<sup>82</sup> and physiological characteristics (e.g., strength, mobility, alignment, etc.).<sup>83,84</sup> We included 5 clinical tests—SEBT-ANT, Biodex static balance, figure 8 hop, triple crossover hop and DFROM—that were commonly used in clinical settings to examine the risk of injury,<sup>33,84-86</sup> mechanical or sensorimotor deficits caused by injury,<sup>17,75,87,88</sup> or improvements following the rehabilitation interventions.<sup>66,89,90</sup> Specifically, SEBT-ANT was included because short reach distance indicates poor dynamic postural control, which is often observed in CAI patients<sup>32,91</sup> and more importantly was identified as a predictor for ankle reinjury<sup>85</sup> and for a development of CAI.<sup>92</sup> The SEBT-ANT is a measure of dynamic postural control, and the Biodex balance system is a measure of static postural control using a static athlete single-leg overall stability index (anterior-posterior and medial-lateral postural control stability).<sup>93,94</sup> The figure 8 hop for time test was

included as Docherty et al<sup>75</sup> reported a significant correlation ( $r = 0.31$ ) between self-reported instability index and time to complete the task, indicating that CAI patients took a longer time to complete the test relative to controls. We also saw this functional performance deficit in the injured ankles relative to the uninjured ankles of CAI patients during single-leg multiplanar hop.<sup>95</sup> The triple crossover hop for distance test was identified as a predictor for lower extremity strength and power.<sup>96</sup> The test could increase stress on the lateral structures of the ankle as it has side-to-side motion. This would have a potential benefit from this test relative to the other hop tests (e.g., single hop for distance, triple straight hop for distance, side hop for time and up-down hop, etc.) that use only sagittal-plane motion.<sup>75,77,78</sup> Moreover, the number of failed trials during the clinical tests was included because more numbers of failed trials may suggest sensorimotor impairments in the global and/or local system to cope with clinical tasks during SEBT, Biodex balance, figure 8 hop, and triple crossover hop tests. Further, as mechanical and/or sensorimotor impairments are thought to be related to perceived self-reported function<sup>97</sup> and repeated ankle sprains,<sup>17,33,75,84-88</sup> we included 3 self-reported function questionnaires: FAAM-ADL, FAAM-Sports and MAII, and the number of previous ankle sprains. Lastly, a recent prospective study concluded that BMI may be a risk factor for repeated ankle sprains, as higher BMI is associated with greater risk of ankle reinjury and overall lower extremity injury.<sup>85,98,99</sup>

#### *Single-Leg Maximal Vertical Forward Jump Landing/Cutting Task*

Subjects were instructed to perform “double-leg maximal vertical forward jump as high as they can,” “land on the force plate with the test leg only,” and “side-cutting jump at 90° to the contralateral side as quickly as possible” in a maximal effort while facing forward during the task (Figure 1). We allowed up to 10 practice trials, gradually increasing vertical jump height, to reduce learning effects for subjects prior to testing data collection. Subjects then performed 10

testing trials of single-leg maximal vertical forward jump landing/cutting. Subjects stood at a distance that was 50% of their height from the center of the force plate (Figure 1A). Subjects performed a double-leg maximal vertical forward jump (Figure 1B), landed on the force plate with the test leg only (Figure 1C), and immediately transitioned to a side-cut jump at 90° to the contralateral side (Figures 1D and 1F). We marked 3 target locations: the starting position, the landing position on the force plate and the side-cut jump landing position (standardized to 60–70% of subject's height) to ensure consistency across all trials of the task. The first 5 trials were used to estimate a range of maximal vertical jump heights by adding  $\pm 5\%$  to the average maximal vertical jump height. We calculated and confirmed the maximal vertical jump height using a sacral marker (posterior superior iliac crest) in Vicon Nexus software during a 1-min rest between each trial. The next 5 successful trials were used for data analysis. We discarded and repeated a trial if the subject missed any of the target locations or the maximal vertical jump height was outside of the range determined in the first 5 trials. There was a 1-min rest between each trial.

### *Motion Analysis*

We collected motion data using 12 high-speed cameras (250 Hz; Vicon, Oxford, UK) during the stance phase of jump landing/cutting. We placed 44 reflective markers on each subject's anatomical landmarks. A single marker was placed bilaterally over anterior and posterior superior iliac spine, greater trochanter, medial and lateral femoral condyle, medial and lateral malleoli, posterior heel, dorsal midfoot, middle forefoot (head of second metatarsal), medial and lateral forefoot. Four rigid clusters with 4 markers were placed bilaterally over the lateral midthigh and midshank.

### *Data Processing*

We collected spatial trajectories from 44 reflective markers using Vicon Nexus software, and imported them into Visual 3D (C-Motion, Germantown, MD). The trajectories data were smoothed using a fourth-order low-pass Butterworth filter; a cutoff frequency of 10 Hz was determined by residual analyses<sup>100</sup> for all jump landing/cutting trials. We used the smoothed marker coordinates to calculate 3D ankle, knee and hip joint kinematics for jump landing/cutting tasks. We created a static model for each subject using previously described methods.<sup>82</sup> Joint kinematics were calculated using a Cardan rotation sequence of flexion-extension, abduction-adduction, and internal-external rotation.<sup>101</sup>

### *Functional Statistical Analysis*

Functional Principal Component Analysis. There were 6 “dimensions” of data that were used in this study: ankle, knee and hip angles in both the frontal and sagittal planes. Within each “dimension,” a subject had 5 iterate curves (e.g., 5 trials of landing/cutting), making a total of 30 curves per subject (6 dimensions  $\times$  5 trials of the task). The goal was to have a single representative curve for analysis per subject in each of frontal and sagittal planes. Of the 5 available curves for a given subject and dimension, 4 curves were registered to a selected reference curve; typically the curve had the largest data points (e.g., the longest stance time). All curves started at time point zero and end points were based on the curve to which the replicate curves were registered. If the number of observed points varied from curve to curve within a subject, then points were interpolated using time-warping splines.<sup>102,103</sup> The resulting 5 curves were identical in length and very similar in shape, so an average at each point was taken to obtain a single curve per subject per dimension, making a total of 6 curves per subject, 3 for each of the frontal and sagittal planes. Next, using functional principal component analysis, we

reduced the ankle, knee and hip kinematic curves to one in each of the frontal and sagittal planes. This process took a “variance-maximizing average” highlighting important and informative features found in the input curves. We registered the remaining curves in that plane to the reference curve and the resulting curves were the final representative curves used in analysis. In short, to obtain representative curves we registered and averaged within-subject dimension curves, did functional principal component analysis on within-subject plane curves on 5 groups of 2 curves per subject, and then registered between-subject plane curves.

Hierarchical Bayesian Model with a Product Partition Model. We used a hierarchical Bayesian model that employed a product partition model, to cluster movement curves. A feature of the procedure was the probabilistic assignment of individuals to cluster based on shape of the representative curve and the similarity of 12 clinical predictor values. For example, if we cluster one of the dependent variables, a sagittal representative curve using the functional principal component analysis,  $y_{it}$  is denoted as a sagittal representative curve and the measurement was taken on the  $i$ -th subject at time  $t$ . In this proposal  $i = 1, 2, 3, \dots, 100$  and  $t = 1, \dots, n_i$  where  $n_i$  denotes the number of time points for the  $i$ -th subject. Measurements of a sagittal representative curve during landing/cutting were realizations of subject-specific functions resulting in the following equation:

$$y_{it} = \beta_{0i} + f_i(z_{it}) + \epsilon_{it}. \quad (1.1)$$

Here  $z_{it}$  references time at which  $y_{it}$  was measured,  $f_i(\cdot)$  denoted each subject’s ( $i$ -th) sagittal representative curve,  $\beta_{0i}$  denoted a vertical shift to the  $i$ -th subject’s curve, and  $\epsilon_{it}$  was an idiosyncratic error or deviation from the subject-specific curve  $f_i(\cdot)$ . The error term followed a normal distribution with mean 0 and variance  $\sigma^2$  (in notation  $\sigma^2 \sim N(0, \sigma^2)$ ). In this proposal, there was negligible deviations from the curve and  $\sigma^2$  was very small. In model 1.1,  $f_i(\cdot)$  was

unknown for each subject, so it was estimated using the data. This seemingly challenging problem was greatly simplified when instead of considering  $f_i(\cdot)$  directly we considered an approximation of  $f_i(\cdot)$  which was expressed as a simple linear combination of basis functions.

We used the following equation for this process:

$$f_i(z_{it}) = h(z_{it}) \beta_i \quad (1.2)$$

where  $h(\cdot)$  was a known basis function and  $\beta_i$  denoted the corresponding “regression” coefficients. Instead of estimating  $f_i(\cdot)$ , we estimated  $\beta_i$  which was much simpler.

**Predictor Dependent Product Partition Model.** The method employed to include values of 12 clinical predictors in clustering of curves (in addition to the curve shape which was carried out using the coefficients in equation 1.2), was through a predictor-dependent product partition model.<sup>104</sup> The predictor dependent product partition model was a probability distribution that assigned probabilities to all the possible ways that  $n$  subjects can be collected into  $\kappa$  groups. It gets its name because distribution was based on a product called cohesion functions that measured the “compactness” of subjects in a cluster and a “similarity” function that measured the similarity among subject 12 clinical predictor values. In what follows, the cohesion function was denoted by  $c(\cdot)$  and the similarity by  $g(\cdot)$ . We used  $\rho$  to denote a partition of the  $n$  subjects into  $\kappa$  groups. That was if  $S_1$  denoted the collection of subjects in the first group, and  $S_2$  the second up to  $S_\kappa$ , then  $\rho = \{S_1, S_2, S_\kappa\}$ . A predictor dependent product partition model equation had the following form:

$$Pr(\rho = \{S_1, S_2, \dots, S_\kappa\}) = \frac{1}{C} \prod_{j=1}^{\kappa} c(S_j) g(x_j^*) \quad (1.3)$$

where  $C$  was a normalizing constant ensuring the probabilities associated with all the possible partition sums to 1 and  $x_j^*$  was a collection of cluster specific clinical predictor values. More specifically, if we let  $x_i = (x_{1i}, x_{2i}, \dots, x_{pi})$  denote the  $i$ -th subjects  $p$  predictor values (e.g.,  $x_{1i}$

= gender for the  $i$ -th subject,  $x_{2i}$  = SEBT-ANT for the  $i$ -th subject,  $x_{3i}$  = Biodex balance for the  $i$ -th subject . . . , etc.), then  $x_j^*$  was the collection of all the  $x_i$ 's that belong to cluster  $j$ . The specific form of  $(\bullet)$  was dependent on the application, but had to produce larger values when the clinical predictor values included in the cluster were more “similar.” In this way, subjects that have similar values of clinical predictors had a higher probability of being assigned to the same cluster *a priori*. The partition equation in model 1.3 together with the data equation 1.1 and function equation 1.2 modeled subject response curves flexibly, yet still have the ability to cluster subjects based on shape of the representative curve and 12 clinical predictor values. We refer to the model detailed in equations 1.1 to 1.3 as the prediction model, and was a simplified version of that found in a previous paper.<sup>105</sup>

## RESULTS

### *Characteristics of Frontal Kinematic Movement Pattern Clusters*

We used the product partition model to estimate the number of frontal movement clusters, and partitions that contained 4 frontal clusters were identified to have the highest posterior probability (Figure 3). The number of subjects in each of 4 frontal clusters are presented in Table 2. Six clinical predictors, including gender ( $p = 0.00$ ), SEBT-ANT ( $p = 0.03$ ), figure 8 hop ( $p = 0.00$ ), triple crossover hop ( $p = 0.00$ ), DFROM ( $p = 0.01$ ) and FAAM-ADL ( $p = 0.03$ ) appeared to be influential for group assignment of 4 frontal clusters (Table 2); there are statistically significant differences in the cluster specific means for each of 6 clinical predictors between 4 frontal clusters. Table 2 has the results of post hoc pairwise comparisons. Table 3 shows the characteristics of each of 4 frontal clusters. For example, in frontal cluster 1, the value of 45.7% indicates that 45.7% of the subjects in frontal cluster 1 were females who performed the triple crossover hop that ranged from 2.38–4.3 m.



### *Prediction Model Accuracy for Frontal Kinematic Movement Pattern Clusters*

The multinomial regression model revealed 2.2 times chance (55.7%) of prediction model accuracy in assigning each of 97 CAI subjects into 1 of 4 frontal clusters. Due to a small sample size in frontal cluster 5 ( $n = 2$ ) and 6 ( $n = 1$ ), 97 CAI subjects were used for prediction model accuracy. Initially, the prediction model allocated each subject to 1 of 4 frontal clusters based on lower extremity frontal kinematics and values of 12 clinical predictors. Then, we treated each subject's cluster assignment as the response in a multinomial regression model. We obtained the out-of-sample prediction by excluding a subject's predictor values and a cluster label when fitting the multinomial regression model and then using the fitted model to predict group assignment for the excluded subject using the excluded subject's predictor values. We did this for each of the 97 CAI subjects. Table 4 details prediction model accuracy for 4 frontal clusters.

### *Characteristics of Sagittal Kinematic Movement Pattern Clusters*

We used the prediction model to determine an optimal number of sagittal movement clusters, and we identified partitions that contained 5 sagittal clusters as having the highest posterior probability (Figure 7). The number of subjects in each of 5 sagittal clusters are presented in Table 5. Ten clinical predictors appeared to be influential for group assignment of 5 sagittal clusters in the same sense as described for 4 frontal clusters, including gender ( $p = 0.00$ ), SEBT-ANT ( $p = 0.00$ ), figure 8 hop ( $p = 0.00$ ), triple crossover hop ( $p = 0.00$ ), DFROM ( $p = 0.00$ ), the number of failed trials during the clinical tests ( $p = 0.00$ ), BMI ( $p = 0.00$ ), FAAM-Sports score ( $p = 0.00$ ), FAAM-ADL score ( $p = 0.00$ ) and MAII "yes" responses on questions 4–8 ( $p = 0.03$ ) (Table 5). Results of post hoc pairwise comparisons are presented in Table 5. Characteristics of each of 5 sagittal clusters (% of values) are presented in Table 6. For example,

in sagittal cluster 1, the value of 65.6% indicates that 65.6% of the subjects in sagittal cluster 1 were female who performed triple crossover hop that ranged from 2.38–4.3 m.

#### *Prediction Model Accuracy for Sagittal Kinematic Movement Pattern Clusters*

A multinomial regression model used the predictors (or covariates) of gender, SEBT-ANT, Biodex balance, figure 8 hop, triple crossover hop, DFROM, the number of failed trials during the clinical tests, BMI, FAAM-ADL score, FAAM-Sports score, MAII “yes” responses and the number of previous ankle sprains, produced an out-of-sample prediction rate of 3.0 times chance (59%) in assigning each of 100 CAI subjects into 1 of 5 sagittal clusters. Initially, the prediction model allocated each subject to 1 of 5 sagittal clusters using lower extremity sagittal kinematics and values of 12 clinical predictors. Then, we treated each subject’s cluster assignment as the response in the multinomial regression model. We obtained the out-of-sample prediction by excluding a subject’s predictor values and cluster label when fitting the multinomial regression model, and then using the fitted model to predict group assignment for the excluded subject using the excluded subject’s predictor values. We did this for each of the 100 CAI subjects. We presented the details of prediction model accuracy for sagittal clusters in Table 7.

## DISCUSSION

Patients with CAI demonstrated multiple kinematic movement patterns during a single-leg landing/cutting task (Figure 1). We identified 4 subgroups of frontal movement patterns and 5 subgroups of sagittal movement patterns, respectively, based on shape of the each patient’s representative curve and values of 12 clinical predictors. Our data suggest that 6 clinical predictors (e.g., gender, SEBT-ANT, figure 8 hop, triple crossover hop, DFROM, and FAAM-ADL score; Table 3) provided insight of group membership in assigning each CAI patient to 1 of

the 4 frontal clusters with 2.2 time chances (55.7% accuracy; Table 2), while 10 clinical predictors (e.g., minus Biodex balance and the number of previous ankle sprains; Table 7) provided insight of group membership in assigning each CAI patient to 1 of the 5 sagittal clusters with 3.0 time chance (59% accuracy; Table 6). The current study provides novel findings about the presence of multiple movement patterns within a homogeneous CAI population through the self-reported function. More importantly, clinical tests may help identify specific movement patterns in clinical settings without using laboratory-based tools like a motion capture system and force plates.

#### *The Importance of Identifying Multiple Movement Patterns in a CAI Population*

Previous epidemiology studies<sup>6,106,107</sup> reported that a majority of ankle sprains occur during jump-landing, hopping, cutting, or twisting (direction changes). It is believed that altered movement patterns during these dynamic tasks could predispose CAI patients to vulnerable positions and loads of the foot, which could increase risk of ankle sprains.<sup>47,48,63</sup> As such, rehabilitation interventions could focus on these altered movement patterns to reduce the prevalence of ankle reinjury. However, substantial CAI research has been focused on examining alterations in each component of mechanical and sensorimotor impairments: pathological laxity,<sup>20,108,109</sup> arthrokinematic restrictions,<sup>16,17</sup> osteokinematic restrictions,<sup>25,33,71</sup> strength,<sup>33,88,110-113</sup> proprioception,<sup>114-116</sup> reflex reactions<sup>33,35,117-126</sup> and postural control,<sup>32,91,127,128</sup> while relatively few studies have examined altered movement patterns during landing or cutting.<sup>47-51,129-132</sup> Due to the nature of a static measurement position of mechanical and sensorimotor impairments, these studies give us limited perspectives about dynamic characteristics of neuromuscular control during functional tasks in an active CAI population.

Researchers have reported altered movement patterns during various landing tasks in CAI patients compared to controls and/or ankle sprain copers.<sup>47,50,51,59,133</sup> However, findings are conflicting between studies—demonstrating greater inversion kinematics,<sup>49,63,64</sup> less inversion kinematics,<sup>47</sup> or no difference in kinematics<sup>48,50,53</sup> during prelanding and/or postlanding. Conflicting findings between studies may be due to varied jump tasks, but more likely is due to multiple movement patterns that naturally exist given various constraints among CAI patients who would exhibit varied mechanical and/or sensorimotor impairments.<sup>56,65</sup> It is important to note that most CAI studies selected CAI patients using a subjective self-reported function defining this injured group as homogeneous.<sup>25,42,47,60,92</sup> However, considering the varying severity of mechanical and/or sensorimotor impairments along with the Dynamic System Theory, this injured population could be heterogeneous in terms of multiple movement patterns. This assumption led us to conduct a multiple movement pattern study recently, and the results of our unpublished work successfully identified 6 kinematic movement pattern clusters during a jump landing/cutting task (Figure 1). Since identification of these movement patterns is difficult, there is a need to find clinical tests that help identify multiple movement patterns in clinical settings, and the results of this study confirmed that multiple movement patterns can be predicted by clinical tests (e.g., SEBT-ANT, figure 8 hop, triple crossover hop, and DFROM).

It is worth noting that the current rehabilitation interventions have focused on reducing symptoms caused by ankle sprains (e.g., pain, swelling, effusion, etc.)<sup>134,135</sup> and on improving outcomes associated with risk factors of ankle sprains (e.g., diminished strength, impaired postural control, reduced reflex reactions, reduced proprioception and decreased range of motion).<sup>66,89,90,136</sup> Since these interventions were designed based on the existing literature on risk factors for recurrent ankle sprains, clinicians provide similar or the same rehabilitation protocols

for all CAI patients, which are not individualized nor focused on altered movement patterns during functional tasks (e.g., jump-landing and cutting). Because of this, rehabilitation interventions appeared to be effective in some CAI studies,<sup>12,13,137,138</sup> but not all studies.<sup>12,13,139</sup> As mentioned previously, mechanical and/or sensorimotor impairments contribute to developing multiple movement patterns during functional tasks, which potentially predispose this patient population in different ways to repeated ankle sprains. To reduce risk of ankle sprains, identifying multiple movement patterns is of utmost importance, and if a certain movement pattern places this patient population at risk, the interventions should be developed and addressed to correct the specific movement patterns during functional tasks. This study is the first step in finding clinical predictors that would help identify specific movement patterns during a maximal single-leg jump landing plus cutting in a CAI population.

#### *Multinomial Regression for Prediction Model Accuracy for Frontal and Sagittal Clusters*

We used a multinomial regression model to quantify the influence of each predictor on cluster membership probabilities and to make predictions for frontal and sagittal kinematic clusters, respectively. The prediction model revealed 55.7% and 59% out-of-sample prediction rates for frontal and sagittal clusters, respectively. However, its clinical utility is questionable due to low prediction accuracy for which subject is assigned to a certain cluster. Greater than 75% of accuracy (3 in 4 cases correct accuracy) may provide more confidence in its clinical utility in clinical settings. It is worth noting that researchers should consider a few important things to improve the prediction model accuracy in any future study. First, 12 clinical predictors included in this study were chosen based on scientific evidence associated with a risk factor or a strong predictor for CAI. However, among 12 clinical predictors, only 4 predictors included in this study seemed to be highly supported by prospective data as a strong predictor for recurrent

ankle sprains including SEBT<sup>68,85,92,140</sup> (or a similar Y-balance test),<sup>141,142</sup> DFROM,<sup>33,86</sup> BMI,<sup>99,106,107</sup> and FAAM-ADL score.<sup>92</sup> As such, more prospective data with a larger sample size is needed to identify other strong predictors for ankle reinjury that would help predict multiple movement patterns for any future study. Interestingly, BMI, defined as a strong predictor for ankle reinjury in previous studies, was not an influential predictor in predicting kinematic movement patterns in this study relative to other influential predictors such as SEBT, DFROM and FAAM-ADL score. There are two possible reasons. First, the current study may have a relatively small sample size compared to previous BMI studies:  $n = 152$ ,<sup>98</sup>  $n = 539$ <sup>85</sup> and  $n = 11918$ .<sup>99</sup> There were only 8% of obese subjects ( $BMI, \geq 30$ )<sup>143</sup> and 27% of overweight subjects ( $BMI, 25-29.9$ )<sup>143</sup> in this study. Due to the smaller ratio of higher BMI, BMI may not have been influential in the current study. Second, while the current study was conducted in a university setting; most subjects were college students (mean age of  $21.8 \pm 2.3$ ); the previous BMI studies were completed in a high school population.<sup>85,98,99</sup> The findings of this study showed that some predictors (e.g., Biodex index, failed trials, FAAM-Sports, MAII and number of previous ankle sprains) did not play an important role in predicting kinetics movement patterns. Future studies should include other high differential predictors along with the influential predictors included in this study (e.g., gender, SEBT, figure 8 hop, triple crossover hop, DFROM and FAAM-ADL score). As the purpose of the prediction model was to predict lower extremity kinematic movement patterns by using values of clinical tests, future work should include movement-related measures including calcaneal eversion ROM, tibial varum ROM and talar tilt ROM as potential clinical predictors as suggested in previous data.<sup>84</sup>

### *Characteristics of Sagittal Kinematic Movement Pattern Clusters*

We identified 5 sagittal kinematic pattern clusters in this study based on shape of the representative curve (e.g., ankle, knee and hip angles during landing/cutting) and values of 12 predictors. Sagittal clusters 1, 2, 3, and 5 seemed to have an adequate number of varied subjects (17–32 subjects), while sagittal cluster 4 had only 6 subjects. Not surprisingly, a smaller sample size increased characteristics of the cluster to find similarities within the cluster between subjects (% of values; Table 6), which may be attributed to less between-subject variability. For example, 100% of subjects in sagittal cluster 4 ( $n = 6$ ) were characterized by gender and self-reported function. A trend of characteristics of each cluster (% of values) was reduced by having more subjects in each sagittal cluster: sagittal cluster 5 ( $n = 17$ ; 82.3% of values), sagittal cluster 3 ( $n = 22$ ; 72.7% of values) and sagittal cluster 1 ( $n = 32$ ; 65.6% of values) (Table 6).

Among the 5 sagittal clusters, clusters 4 and 5 appeared to have a high risk of ankle reinjury. For example, sagittal cluster 4 ( $n = 6$ , 100% female) demonstrated several distinctive characteristics in negative ways including the most restricted DFROM (38.58 deg), the highest BMI (29.05 kg/m<sup>2</sup>), the lowest self-reported function on the FAAM-Sports (48.83%), FAAM-ADL (72%) and MAII (4.67 “yes” responses), the longest figure 8 hop time (15.11 sec), the shortest triple crossover hop distance (3.47 m) and the largest number of failed trials during the clinical tests (8.5 times), compared to other sagittal clusters (Table 6). In addition, sagittal cluster 5 ( $n = 17$ , 100% male) also exhibited distinctive negative characteristics, including the shortest SEBT-ANT reach distance (56.36% of leg length), the second lowest DFROM (39.31 deg), and the second lowest self-reported function on the MAII (3.71 “yes” responses).

These findings from sagittal clusters 4 and 5 suggest 3 important clinical implications. First, poor performance on SEBT-ANT was identified as a strong predictor for risk of ankle

reinjury.<sup>68,85</sup> Short reach distances are indicative of poor dynamic postural control, which has been observed in patients with CAI in meta-analyses.<sup>32,91</sup> Reduced performance on SEBT-ANT in sagittal cluster 5 could be due to diminished lower extremity strength,<sup>144</sup> mobility,<sup>71,145</sup> balance,<sup>146</sup> and coordination<sup>147</sup> because these factors are responsible for maintaining control of the body during the test. Specifically, short reach distances were associated with restricted DFROM (28% of the variance in a SEBT-ANT performance),<sup>71</sup> and reduced knee and hip flexion kinematics (49% of the variance in a SEBT-ANT performance).<sup>148,149</sup> Second, we observed a reduced DFROM in sagittal cluster 5, which was defined as a predictor for risk of CAI.<sup>33,86,150</sup> Pope et al<sup>86</sup> reported that limited dorsiflexion ROM (34 deg) results in 5 times greater risk of ankle sprains compared to normal DFROM (45 deg) during an intensive 12-week training in 1093 Australian Army recruits,<sup>86</sup> and further restricted DFROM has been reported in CAI patients during walking,<sup>27</sup> landing,<sup>47,48</sup> cutting,<sup>47</sup> running<sup>26</sup> and a static weight-bearing lunge test.<sup>25,71,136</sup> It is believed tension force during sudden inversion stress can result in an anterior positional fault of the talus,<sup>21,22</sup> which prevents the tibiotalar joint from reaching its rigid, stable, close-packed position (full dorsiflexion); thereby restricting dorsiflexion ROM.<sup>22,87</sup> This idea is supported by a recent study<sup>25</sup> suggesting a relationship between the reduced SEBT-ANT reach distance and restricted DFROM. Third, studies show that higher BMI increased the risk of ankle reinjury 2-fold in 539 high school football players, and increased the risk of reinjury 19 times when a higher BMI player (e.g., BMI for age and gender,  $\geq$  95th percentile)<sup>143</sup> player had a previous ankle sprain(s).<sup>98</sup> Further, even higher BMI (obese, e.g., BMI for age and gender,  $\geq$  95th percentile)<sup>143</sup> high school athletes sustained increased ankle/foot injuries compared to normal weight (e.g., BMI for age and gender, 15–85th percentile)<sup>143</sup> athletes that participated in sports such as wrestling, volleyball and football.<sup>99</sup> Future work should support a relationship



between poor performance on clinical predictors and actual incidence of ankle injury. When it comes to a rehabilitation perspective, interventions should focus on increasing DFROM like talar glide<sup>136</sup> and calf stretching,<sup>151</sup> and increasing dynamic postural control like neuromuscular training (e.g., balance, strength, proprioception, power, agility, etc.).<sup>66,89,90</sup>

On the other hand, sagittal cluster 3 seemed to be the most physically functional group as indicated by the longest triple crossover hop distance (5.97 m), the fastest figure 8 hop time (9.70 sec), the second highest DFROM (47.71 deg), the second longest SEBT-ANT reach distance (65.20% of leg length) and the least failed trials during the clinical tests (3.73 times) among all sagittal clusters. Although good performance on the hop tests may be attributed to the high male ratio (91%)—because males have better performance measures than females due to physiological differences (e.g., strength and muscle fiber characteristics)<sup>83</sup>—other values of the predictors (e.g., DFROM, SEBT-ANT, and number of failed trials) indicate this group to be the most physically functional group among all sagittal clusters. Future research should examine a relationship between a better performance and risk of ankle reinjury.

#### *Characteristics of Frontal Kinematic Movement Pattern Clusters*

Like the sagittal clusters, a small sample size seemed to be associated with higher characteristics of the cluster (% of values). For example, frontal clusters 2 and 4 had a relatively small sample size of 8 and 14 subjects, respectively, which resulted in a better percentage of values that ranged from 62.5–64.2% when compared to frontal cluster 1 (n = 35) and 3 (n = 40) that ranged from 37.5–45.7% (Table 3). Frontal cluster 4 appeared to be the most physically functional group as indicated by the longest SEBT-ANT reach distance (65.29% of leg length), the fastest figure 8 hop time (10.02 sec), the longest triple crossover hop distance (5.92 m), the largest DFROM (47.59 deg), and the highest FAAM-ADL scores (88.21%). As the hop tests

(e.g., figure 8 hop and triple crossover hop) are dependent on physical capacity (e.g., strength and muscle fiber characteristics),<sup>83</sup> a better performance on the hop tests in frontal cluster 4 could be due to a higher male ratio (79%), but values of other clinical predictors suggest that frontal cluster 4 seems to be the most physically functional group among all frontal clusters (Table 2). On the other hand, frontal cluster 2 seemed to be the least physically functional group. While frontal cluster 4 exhibited the best values on several predictors (e.g., SEBT-ANT, figure 8 hop, triple crossover hop, DFROM, and FAAM-ADL score), values of aforementioned predictors for frontal cluster 2 were completely opposite (e.g., the least values). A poor performance on the hop tests may result from a higher female ratio (88%) and/or the observed lowest self-reported function on the FAAM-ADL score (80.5%) and FAAM-Sports score (67.75%). Greater perceived instability of the ankle may decrease physical performance due to fear of ankle reinjury as reported by reduced function on the Disablement in the Physically Active Scale, increased Tampa Scale of Kinesiophobia-11, and increased Fear-Avoidance Beliefs Questionnaire.<sup>97</sup> As frontal cluster 4 seemed to be the most physically functional, and frontal cluster 2 seemed to be the least physically functional, prospective data should examine whether physical functionality is associated with risk of ankle reinjury.

#### *High vs. Low Characteristics Between Sagittal and Frontal Clusters*

Among 12 clinical predictors included in this study, 6 predictors (e.g., gender, SEBT-ANT, figure 8 hop, triple crossover hop, DFROM and FAAM-ADL) appeared to be influential for group membership of both frontal and sagittal clusters (Tables 2 and 5). We identified 4 frontal clusters in this study. In frontal cluster 4, 64.2% of subjects were characterized by gender (male), figure 8 hop (8.3–10.3 sec) and triple crossover hop (5.56–7.79 m). In frontal cluster 2, 62.5% of subjects were characterized by gender (female), triple crossover hop (2.38–4.3 m) and

Biodex balance (0.25–0.75 index stability). On the other hand, 5 sagittal kinematic movement pattern clusters were identified in this study. Sagittal clusters with a range from 30.4–100% was better characterized compared to frontal clusters which ranged from 37.5–64.2%. A possible explanation for this result is the fact that the sagittal representative curves displayed far less individual variability in shape, and, as a result, the clinical predictors had more influence on the resulting cluster configuration. In sagittal cluster 3, 72.7% of subjects were characterized by triple crossover hop (5.56–7.79 m) and figure 8 hop (8.3–10.3 sec). In sagittal cluster 4, 100% of subjects were characterized by gender (female) and FAAM-Sports (28–69%) and 82.3% of subjects were characterized by gender (male) and SEBT-ANT (46.7–59.5% of leg length). Among 6 frontal clusters, frontal clusters 5 (n = 2) and 6 (n = 1) were not included in further analyses (e.g., pairwise comparisons, post hoc pairwise comparison, and prediction model accuracy) due to a small sample size. Each of 4 frontal clusters were characterized by 2 predictors with a range of 37.5–64.2%, while each of 5 sagittal clusters were characterized with a range of 30.4–100%. On the basis of these findings observed higher characteristics of sagittal clusters (% of values presented in Table 6) may be attributed to lower between-subject variability in lower extremity sagittal kinematics during jump landing/cutting compared to frontal kinematics. For example, during landing, sagittal kinematics at the ankle, knee and hip involve a uniplanar direction towards increasing flexion angles (e.g., dorsiflexion, knee flexion and hip flexion) so that no opposite direction of sagittal kinematics (e.g., plantarflexion, knee extension and hip extension) would occur. As such, there are only uniplanar differences in kinematics (more or less angles) between subjects. Further, during side-cutting, sagittal kinematics at the ankle, knee and hip would also occur in a uniplanar direction towards increasing extension angles (e.g., plantarflexion, knee extension and hip extension). However, lower extremity frontal

kinematics could occur in biplanar directions like inversion or eversion at the ankle and adduction or abduction at the knee and hip. Changes in the magnitude of frontal kinematics (angle differences) and biplanar directions of 3 lower extremity joints would lead to higher between-subject variability during jump landing/cutting, which potentially reduces the ability to characterize each frontal cluster. Greater variability between subjects in frontal kinematics may be associated with mechanical and/or sensorimotor impairments reported in CAI patients. From a mechanical impairment perspective, changes in pathological laxity and arthrokinematic restrictions may contribute to a greater variability of frontal kinematics, especially at the ankle. Substantial evidence has shown increased ankle ligament laxity (e.g., inversion and/or anterior direction) as measured by an ankle arthrometer in CAI patients,<sup>19,43,108-110,152,153</sup> while a few studies reported no increased ankle laxity in patients with CAI.<sup>154,155</sup> Conflicting results may support the idea of between-subject variability in a CAI population, suggesting that not all CAI patients have the same impairments.

Damage to lateral ankle ligaments (e.g., anterior talofibular, calcaneofibular, and posterior talofibular) and mechanoreceptors results in articular deafferentation (reduced sensory feedback),<sup>156,157</sup> which potentially decreases dynamic ankle joint stabilization (reduced motor function) of ankle musculatures (e.g., peroneal muscle groups).<sup>158</sup> It is believed greater ankle ligament laxity would reduce mechanical stability at the ankle,<sup>19,156</sup> which would place the foot into a more inverted position during initial landing, which is thought to increase risk of repeated ankle sprains.<sup>20,108,109</sup> For a sensorimotor perspective, relating to ligament laxity, it may be possible that a patient with high inversion ligament laxity would use a movement strategy to increase eversion angle as a self-protective motor strategy to avoid repeated ankle sprains as increased inversion laxity is a less stable, loose-packed, more vulnerable position to lateral ankle

sprains, which is supported by a recent landing study.<sup>47</sup> Considering all possible ways to cope with mechanical and sensorimotor impairments during landing/cutting, greater between-subject variability of frontal kinematics are likely present in a CAI population. In addition, sensorimotor impairments in evertors, including slower reflex reactions,<sup>35-37</sup> arthrogenic muscle inhibition,<sup>38</sup> and diminished strength<sup>39,40</sup> are substantially reported in CAI patients. Conversely, some studies have reported no sensorimotor impairments in patients with CAI including strength,<sup>152,159-161</sup> reflex reactions,<sup>32,40,84</sup> and muscular activation.<sup>52,124</sup> Due to evertor impairments, each CAI patient would utilize his/her own movement strategy to accomplish desired movement tasks in a variety of ways, which ultimately result in higher variance of frontal kinematics between subjects, and further it would reduce the ability to characterize frontal kinematic movement pattern clusters.

### *Clinical Implications*

When it comes to identifying kinematic movement patterns, the first step was to identify each movement pattern, which we successfully accomplished in our recent unpublished work. The second step, which was the purpose of the current study, was to find clinical predictors that help identify multiple movement patterns. The results of the current study revealed that kinematic movement patterns can be predicted using values of clinical predictors, however due to low prediction accuracy (55.7–59%), its clinical diagnostic utility remains questionable. However, prediction accuracy could be increased up to a desirable level (75% accuracy; 3 in 4 cases correct accuracy) if future work would include high influential predictors that were identified in the current study and would add other influential predictors that are movement-related measures. The third step is to identify altered movement patterns that place CAI patients at risk of ankle reinjury by measuring an actual incidence of injury as a follow-up study. The last

step is to identify interventions to address altered-movement patterns and further to examine whether the interventions can actually reduce the risk of ankle reinjury. The end goal of this project is that clinicians can predict which altered-movement pattern is at risk of reinjury using a series of clinical tests without using high-cost biomechanical tools, and further provide target interventions to correct altered-movement patterns to minimize risk of reinjury. We characterized some clusters, including sagittal clusters 4 and 5, as being high risk of ankle reinjury (e.g., shorter SEBT-ANT reach distance, restricted DFROM, higher BMI, and higher perceived self-reported function). Prospective data should seek to support a potential relationship between poor motor performance on dynamic postural control (SEBT-ANT), ankle mobility (DFROM), hop tests (figure 8 hop and triple crossover hop) and higher BMI and an actual increased risk of reinjury.

#### *Limitations of the Study*

There are few limitations in the current study. First, altered movement patterns can be caused by various biomechanical parameters (e.g., ground reaction force, net internal joint moment, muscle activation, etc.). However, the current study only used lower extremity joint kinematics, which may provide limited information in understanding comprehensive altered movement patterns that would predispose a CAI population to risk of reinjury. Second, the predictor dependent clustering model identified 4 frontal clusters and 5 sagittal clusters. However, the number of subjects in frontal cluster 2 ( $n = 8$ ), frontal cluster 4 ( $n = 14$ ) and sagittal cluster 4 ( $n = 6$ ) may not have a sufficient number of subjects for desired power (80%) to examine between-cluster differences in clinical predictors (e.g., post hoc pairwise comparisons, Tables 2 and 5). Third, we did not provide prospective data (e.g., actual incidences of ankle sprain injury, number of “giving way” episodes, exposure time to sports, type of participating

sports, etc.) with the current subjects to quantify a relationship between altered movement patterns and risk of ankle reinjury. As such, as a 1-year follow up study, we are currently collecting prospective data to see which altered-movement patterns would have higher risk of reinjury. Fourth, although we collected data with 100 subjects in this study, since other prospective studies used a larger number of subjects:  $n = 152$ ,<sup>98</sup>  $n = 539$ ,<sup>85</sup>  $n = 1093$ <sup>86</sup> and  $n = 11918$ <sup>99</sup> to identify a risk factor for ankle reinjury, we may not have enough power to examine a relationship between altered-movement patterns and risk of ankle reinjury with the 100 subjects. Lastly, ankle sprains are observed across various ages from adolescence to elderly people, and, therefore, we can only generalize our findings to a college student population (mean age of  $21.8 \pm 2.3$  years).

## CONCLUSIONS

Statistical analyses—including the functional principal component analysis for a representative curve, product partition model for a subject assignment into the cluster and predictor dependent clustering model for the probability of the cluster—allowed us to predict kinematic movement patterns (which subject could be assigned to a certain cluster) using ankle, knee and hip kinematics as well as values of 12 clinical predictors. Six clinical predictors (e.g., gender, SEBT-ANT, figure 8 hop, triple crossover hop, DFROM, and FAAM-ADL score) were influential in predicting frontal kinematic movement pattern clusters (Table 2), while 10 clinical predictors (minus the Biodex balance and number of ankle sprains) were influential in predicting sagittal kinematic movement pattern clusters (Table 5). The end goal of this study is to identify altered movement patterns that predispose CAI patients to higher risk of ankle reinjury and to identify appropriate interventions to correct altered movement patterns to reduce the prevalence of ankle reinjury. The current findings of this study suggest that we were able to identify 4

frontal and 5 sagittal kinematic movement pattern clusters, and these movement pattern clusters seemed to be predicted using a series of clinical tests which ranged from 55.7 to 59% accuracy. Due to low prediction model accuracy in the current model, clinical practicality may be limited (40% errors). However, prediction model accuracy might be increased in future work by incorporating a different set of predictors by keeping the current high influential predictors (e.g., gender, SEBT-ANT, figure 8 hop, triple crossover hop, DFROM and FAAM-ADL score) used in this study and replacing the current low influential predictions (e.g., Biodex index, number of failed trials during the clinical tests, FAAM-Sports, MAII, and number of previous ankle sprains) with other new promising predictors (e.g., ROM measures of calcaneal eversion, tibial varum, and talar tilt).



## REFERENCES

1. Hootman JM, Dick R, Agel J. Epidemiology of collegiate injuries for 15 sports: summary and recommendations for injury prevention initiatives. *J Athl Train*. 2007;42(2):311-319.
2. Fong DT, Hong Y, Chan LK, Yung PS, Chan KM. A systematic review on ankle injury and ankle sprain in sports. *Sports Med*. 2007;37(1):73-94.
3. Kannus P, Renstrom P. Treatment for acute tears of the lateral ligaments of the ankle. Operation, cast, or early controlled mobilization. *J Bone Joint Surg Am*. 1991;73(2):305-312.
4. Waterman BR, Owens BD, Davey S, Zacchilli MA, Belmont PJ. The epidemiology of ankle sprains in the United States. *J Bone Joint Surg Am*. 2010;92(13):2279-2284.
5. Anandacoomarasamy A, Barnsley L. Long term outcomes of inversion ankle injuries. *Br J Sports Med*. 2005;39(3):1-4.
6. McKay GD, Goldie PA, Payne WR, Oakes BW. Ankle injuries in basketball: injury rate and risk factors. *Br J Sports Med*. 2001;35(2):103-108.
7. Hintermann B, Boss A, Schafer D. Arthroscopic findings in patients with chronic ankle instability. *Am J Sports Med*. 2002;30(3):402-409.
8. Lee J, Hamilton G, Ford L. Associated intra-articular ankle pathologies in patients with chronic lateral ankle instability: arthroscopic findings at the time of lateral ankle reconstruction. *Foot & Ankle Spec*. 2011;4(5):284-289.
9. Valderrabano V, Horisberger M, Russell I, Dougall H, Hintermann B. Etiology of ankle osteoarthritis. *Clin Orthop Relat Res*. 2009;467(7):1800-1806.
10. Valderrabano V, Pagenstert G, Horisberger M, Knupp M, Hintermann B. Sports and recreation activity of ankle arthritis patients before and after total ankle replacement. *Am J Sports Med*. 2006;34(6):993-999.
11. Valderrabano V, Hintermann B, Horisberger M, Fung TS. Ligamentous posttraumatic ankle osteoarthritis. *Am J Sports Med*. 2006;34(4):612-620.
12. Doherty C, Bleakley C, Delahunt E, Holden S. Treatment and prevention of acute and recurrent ankle sprain: an overview of systematic reviews with meta-analysis. *Br J Sports Med*. 2017;51(2):113-125.
13. Kosik KB, McCann RS, Terada M, Gribble PA. Therapeutic interventions for improving self-reported function in patients with chronic ankle instability: a systematic review. *Br J Sports Med*. 2017;51(2):105-112.
14. Lofvenberg R, Karrholm J, Lund B. The outcome of nonoperated patients with chronic lateral instability of the ankle: a 20-year follow-up study. *Foot Ankle Int*. 1994;15(4):165-169.
15. Gribble PA, Bleakley CM, Caulfield BM, et al. 2016 consensus statement of the International Ankle Consortium: prevalence, impact and long-term consequences of lateral ankle sprains. *Br J Sports Med*. 2016;50(24):1493-1495.
16. Hertel J. Functional anatomy, pathomechanics, and pathophysiology of lateral ankle instability. *J Athl Train*. 2002;37(4):364-375.
17. Gerber JP, Williams GN, Scoville CR, Arciero RA, Taylor DC. Persistent disability associated with ankle sprains: a prospective examination of an athletic population. *Foot Ankle Int*. 1998;19(10):653-660.

18. Delahunt E, Coughlan GF, Caulfield B, Nightingale EJ, Lin CWC, Hiller CE. Inclusion criteria when investigating insufficiencies in chronic ankle instability. *Med Sci Sports Exer.* 2010;42(11):2106-2121.
19. Hubbard TJ. Ligament laxity following inversion injury with and without chronic ankle instability. *Foot Ankle Int.* 2008;29(3):305-311.
20. Hubbard TJ, Hertel J. Mechanical contributions to chronic lateral ankle instability. *Sports Med.* 2006;36(3):263-277.
21. Caputo AM, Lee JY, Spritzer CE, et al. In vivo kinematics of the tibiotalar joint after lateral ankle instability. *Am J Sports Med.* 2009;37(11):2241-2248.
22. Wikstrom EA, Hubbard TJ. Talar positional fault in persons with chronic ankle instability. *Arch Phys Med Rehabil.* 2010;91(8):1267-1271.
23. Hubbard TJ, Hertel J. Anterior positional fault of the fibula after sub-acute lateral ankle sprains. *Man Ther.* 2008;13(1):63-67.
24. Hubbard TJ, Hertel J, Sherbondy P. Fibular position in individuals with self-reported chronic ankle instability. *J Orthop Sports Phys Ther.* 2006;36(1):3-9.
25. Hoch MC, Staton GS, Medina McKeon JM, Mattacola CG, McKeon PO. Dorsiflexion and dynamic postural control deficits are present in those with chronic ankle instability. *J Sci Med Sport.* 2012;15(6):574-579.
26. Drewes LK, McKeon PO, Kerrigan DC, Hertel J. Dorsiflexion deficit during jogging with chronic ankle instability. *J Sci Med Sport.* 2009;12(6):685-687.
27. Chinn L, Dicharry J, Hertel J. Ankle kinematics of individuals with chronic ankle instability while walking and jogging on a treadmill in shoes. *Phys Ther Sport.* 2013;14(4):232-239.
28. Harrington KD. Degenerative arthritis of the ankle secondary to long-standing lateral ligament instability. *J Bone Joint Surg Am.* 1979;61(3):354-361.
29. Gross P, Marti B. Risk of degenerative ankle joint disease in volleyball players: study of former elite athletes. *Int J Sports Med.* 1999;20(1):58-63.
30. Meyer JM, Lagier R. Post-traumatic sinus tarsi syndrome. An anatomical and radiological study. *Acta Orthop Scand.* 1977;48(1):121-128.
31. DiGiovanni BF, Fraga CJ, Cohen BE, Shereff MJ. Associated injuries found in chronic lateral ankle instability. *Foot Ankle Int.* 2000;21(10):809-815.
32. Munn J, Sullivan SJ, Schneiders AG. Evidence of sensorimotor deficits in functional ankle instability: A systematic review with meta-analysis. *J Sci Med Sport.* 2010;13(1):2-12.
33. Willems TM, Witvrouw E, Delbaere K, Mahieu N, De Bourdeaudhuij I, De Clercq D. Intrinsic risk factors for inversion ankle sprains in male subjects: a prospective study. *Am J Sports Med.* 2005;33(3):415-423.
34. Forkin DM, Koczur C, Battle R, Newton RA. Evaluation of kinesthetic deficits indicative of balance control in gymnasts with unilateral chronic ankle sprains. *J Orthop Sports Phys Ther.* 1996;23(4):245-250.
35. Hopkins JT, Brown TN, Christensen L, Palmieri-Smith RM. Deficits in peroneal latency and electromechanical delay in patients with functional ankle instability. *J Orthop Res.* 2009;27(12):1541-1546.
36. Hopkins JT, Coglianese M, Glasgow P, Reese S, Seeley MK. Alterations in evertor/invertor muscle activation and center of pressure trajectory in participants with functional ankle instability. *J Electromyogr Kinesiol.* 2012;22(2):280-285.

37. Gutierrez GM, Knight CA, Swanik CB, et al. Examining neuromuscular control during landings on a supinating platform in persons with and without ankle instability. *Am J Sports Med.* 2012;40(1):193-201.
38. McVey ED, Palmieri RM, Docherty CL, Zinder SM, Ingersoll CD. Arthrogenic muscle inhibition in the leg muscles of subjects exhibiting functional ankle instability. *Foot Ankle Int.* 2005;26(12):1055-1061.
39. Arnold BL, Linens SW, de la Motte SJ, Ross SE. Concentric evtor strength differences and functional ankle instability: a meta-analysis. *J Athl Train.* 2009;44(6):653-662.
40. Hartsell HD, Spaulding SJ. Eccentric/concentric ratios at selected velocities for the invertor and evtor muscles of the chronically unstable ankle. *Br J Sports Med.* 1999;33(4):255-258.
41. McKeon PO, Hertel J. Spatiotemporal postural control deficits are present in those with chronic ankle instability. *Bmc Musculoskel Dis.* 2008;9(1):76.
42. Wikstrom EA, Fournier KA, McKeon PO. Postural control differs between those with and without chronic ankle instability. *Gait Posture.* 2010;32(1):82-86.
43. Hubbard TJ, Kramer LC, Denegar CR, Hertel J. Contributing factors to chronic ankle instability. *Foot Ankle Int.* 2007;28(3):343-354.
44. Hass CJ, Bishop MD, Doidge D, Wikstrom EA. Chronic ankle instability alters central organization of movement. *Am J Sports Med.* 2010;38(4):829-834.
45. Delahunt E, Monaghan K, Caulfield B. Altered neuromuscular control and ankle joint kinematics during walking in subjects with functional instability of the ankle joint. *Am J Sports Med.* 2006;34(12):1970-1976.
46. Moisan G, Descarreaux M, Cantin V. Effects of chronic ankle instability on kinetics, kinematics and muscle activity during walking and running: A systematic review. *Gait Posture.* 2017;52:381-399.
47. Son SJ, Kim H, Seeley MK, Hopkins JT. Movement strategies among groups of chronic ankle instability, coper, and control. *Med Sci Sports Exerc.* 2017;49(8):1649-1661.
48. Delahunt E, Monaghan K, Caulfield B. Changes in lower limb kinematics, kinetics, and muscle activity in subjects with functional instability of the ankle joint during a single leg drop jump. *J Orthop Res.* 2006;24(10):1991-2000.
49. Delahunt E, Monaghan K, Caulfield B. Ankle function during hopping in subjects with functional instability of the ankle joint. *Scand J Med Sci Sports.* 2007;17(6):641-648.
50. Doherty C, Bleakley C, Hertel J, Caulfield B, Ryan J, Delahunt E. Single-leg drop landing movement strategies in participants with chronic ankle instability compared with lateral ankle sprain 'copers'. *Knee Surg Sports Traumatol Arthrosc.* 2016;24(4):1049-1059.
51. Doherty C, Bleakley C, Hertel J, et al. Coordination and Symmetry Patterns During the Drop Vertical Jump in People With Chronic Ankle Instability and Lateral Ankle Sprain Copers. *Phys Ther.* 2016.
52. Koshino Y, Ishida T, Yamanaka M, et al. Kinematics and muscle activities of the lower limb during a side-cutting task in subjects with chronic ankle instability. *Knee Surg Sports Traumatol Arthrosc.* 2016;24(4):1071-1080.
53. Koshino Y, Yamanaka M, Ezawa Y, et al. Lower limb joint motion during a cross cutting movement differs in individuals with and without chronic ankle instability. *Phys Ther Sport.* 2014;15(4):242-248.

54. Wikstrom EA, Brown CN. Minimum reporting standards for copers in chronic ankle instability research. *Sports Med.* 2014;44(2):251-268.
55. McKeon PO, Hubbard TJ, Wikstrom EA. *Consequences of ankle inversion trauma: a novel recognition and treatment paradigm.* INTECH Open Access Publisher; 2012.
56. Wikstrom EA, Hubbard-Turner T, McKeon PO. Understanding and treating lateral ankle sprains and their consequences: a constraints-based approach. *Sports Med.* 2013;43(6):385-393.
57. Doherty C, Bleakley C, Hertel J, Caulfield B, Ryan J, Delahunt E. Single-leg drop landing motor control strategies following acute ankle sprain injury. *Scand J Med Sci Sports.* 2015;25(4):525-533.
58. Doherty C, Bleakley C, Hertel J, Caulfield B, Ryan J, Delahunt E. Single-leg drop landing movement strategies 6 months following first-time acute lateral ankle sprain injury. *Scand J Med Sci Sports.* 2015;25(6):806-817.
59. Doherty C, Bleakley C, Hertel J, Caulfield B, Ryan J, Delahunt E. Locomotive biomechanics in persons with chronic ankle instability and lateral ankle sprain copers. *J Sci Med Sport.* 2015.
60. Gribble PA, Delahunt E, Bleakley C, et al. Selection criteria for patients with chronic ankle instability in controlled research: a position statement of the International Ankle Consortium. *Br J Sport Med.* 2013;bjsports-2013-093175.
61. Carcia CR, Martin RL, Drouin JM. Validity of the foot and ankle ability measure in athletes with chronic ankle instability. *J Athl Train.* 2008;43(2):179-183.
62. Docherty CL, Gansneder BM, Arnold BL, Hurwitz SR. Development and reliability of the ankle instability instrument. *J Athl Train.* 2006;41(2):154-158.
63. Lin CF, Chen CY, Lin CW. Dynamic ankle control in athletes with ankle instability during sports maneuvers. *Am J Sports Med.* 2011;39(9):2007-2015.
64. De Ridder R, Willems T, Vanrenterghem J, Robinson MA, Palmans T, Roosen P. Multi-segment foot landing kinematics in subjects with chronic ankle instability. *Clin Biomech (Bristol, Avon).* 2015;30(6):585-592.
65. McKeon PO. Dynamic systems theory as a guide to balance training development for chronic ankle instability: A review of the literature. *Athl Train Sports Health Care.* 2012;4(5):230-236.
66. Filipa A, Byrnes R, Paterno MV, Myer GD, Hewett TE. Neuromuscular training improves performance on the star excursion balance test in young female athletes. *J Orthop Sports Phys Ther.* 2010;40(9):551-558.
67. Gribble PA, Hertel J. Considerations for normalizing measures of the star excursion balance test. *Meas Phys Educ Exerc Sci.* 2003;7(2):89-100.
68. Plisky PJ, Rauh MJ, Kaminski TW, Underwood FB. Star excursion balance test as a predictor of lower extremity injury in high school basketball players. *J Orthop Sports Phys Ther.* 2006;36(12):911-919.
69. Gribble PA, Kelly SE, Refshauge KM, Hiller CE. Interrater reliability of the star excursion balance test. *J Athl Train.* 2013;48(5):621-626.
70. Bennell KL, Talbot RC, Wajswelner H, Techovanich W, Kelly DH, Hall AJ. Intra-rater and inter-rater reliability of a weight-bearing lunge measure of ankle dorsiflexion. *Aust J Physiother.* 1998;44(3):175-180.
71. Hoch MC, Staton GS, McKeon PO. Dorsiflexion range of motion significantly influences dynamic balance. *J Sci Med Sport.* 2011;14(1):90-92.

72. Vohralik SL, Bowen AR, Burns J, Hiller CE, Nightingale EJ. Reliability and validity of a smartphone app to measure joint range. *Am J Phys Med Rehabil.* 2015;94(4):325-330.
73. Arifin N, Abu Osman NA, Wan Abas WA. Intrarater test-retest reliability of static and dynamic stability indexes measurement using the Biodex stability system during unilateral stance. *J Appl Biomech.* 2014;30(2):300-304.
74. Hinman MR. Factors affecting reliability of the Biodex Balance System: a summary of four studies. *J Sport Rehabil.* 2000;9(3):240-252.
75. Docherty CL, Arnold BL, Gansneder BM, Hurwitz S, Gieck J. Functional-performance deficits in volunteers with functional ankle instability. *J Athl Train.* 2005;40(1):30-34.
76. Caffrey E, Docherty CL, Schrader J, Klossner J. The ability of 4 single-limb hopping tests to detect functional performance deficits in individuals with functional ankle instability. *J Orthop Sports Phys Ther.* 2009;39(11):799-806.
77. Xergia SA, Pappas E, Zampeli F, Georgiou S, Georgoulis AD. Asymmetries in functional hop tests, lower extremity kinematics, and isokinetic strength persist 6 to 9 months following anterior cruciate ligament reconstruction. *J Orthop Sports Phys Ther.* 2013;43(3):154-162.
78. Wikstrom EA, Tillman MD, Chmielewski TL, Cauraugh JH, Naugle KE, Borsa PA. Self-assessed disability and functional performance in individuals with and without ankle instability: a case control study. *J Orthop Sports Phys Ther.* 2009;39(6):458-467.
79. Bolgla LA, Keskula DR. Reliability of lower extremity functional performance tests. *J Orthop Sports Phys Ther.* 1997;26(3):138-142.
80. Bandy WD, Rusche KR, Tekulve FY. Reliability and limb symmetry for five unilateral functional tests of the lower extremities. *Isokinet Exerc Sci.* 1994;4(3):108-111.
81. Ross MD, Langford B, Whelan PJ. Test-retest reliability of 4 single-leg horizontal hop tests. *J Strength Cond Res.* 2002;16(4):617-622.
82. Ford KR, Shapiro R, Myer GD, Van Den Bogert AJ, Hewett TE. Longitudinal sex differences during landing in knee abduction in young athletes. *Med Sci Sports Exerc.* 2010;42(10):1923-1931.
83. Miller AE, MacDougall JD, Tarnopolsky MA, Sale DG. Gender differences in strength and muscle fiber characteristics. *Eur J Appl Physiol Occup Physiol.* 1993;66(3):254-262.
84. Beynon B, Renstrom P, Alosa D, Baumhauer J, Vacek P. Ankle ligament injury risk factors: a prospective study of college athletes. *J Orthop Res.* 2001;19(2):213 - 220.
85. Gribble PA, Terada M, Beard MQ, et al. Prediction of lateral ankle sprains in football players based on clinical tests and body mass index. *Am J Sports Med.* 2016;44(2):460-467.
86. Pope R, Herbert R, Kirwan J. Effects of ankle dorsiflexion range and pre-exercise calf muscle stretching on injury risk in Army recruits. *Aust J Physiother.* 1998;44(3):165-172.
87. Denegar CR, Hertel J, Fonseca J. The effect of lateral ankle sprain on dorsiflexion range of motion, posterior talar glide, and joint laxity. *J Orthop Sports Phys Ther.* 2002;32(4):166-173.
88. Witchalls J, Blanch P, Waddington G, Adams R. Intrinsic functional deficits associated with increased risk of ankle injuries: a systematic review with meta-analysis. *Br J Sports Med.* 2012;46(7):515-523.
89. Pfile KR, Gribble PA, Buskirk GE, Meserth SM, Pietrosimone BG. Sustained improvements in dynamic balance and landing mechanics following a 6-week

- neuromuscular training program in collegiate female basketball players. *J Sport Rehabil.* 2015.
90. Smith BI, Docherty CL, Curtis D. Effects of hip strengthening on neuromuscular control, hip strength, and self-reported functional deficits in individuals with chronic ankle instability. *J Sport Rehabil.* 2017;1-24.
  91. Arnold BL, De La Motte S, Linens S, Ross SE. Ankle instability is associated with balance impairments: a meta-analysis. *Med Sci Sports Exerc.* 2009;41(5):1048-1062.
  92. Doherty C, Bleakley C, Hertel J, Caulfield B, Ryan J, Delahunt E. Recovery from a first-time lateral ankle sprain and the predictors of chronic ankle instability: A prospective cohort analysis. *Am J Sports Med.* 2016;44(4):995-1003.
  93. Testerman C, Vander Griend R. Evaluation of ankle instability using the Biodex Stability System. *Foot Ankle Int.* 1999;20(5):317-321.
  94. Perron M, Hebert LJ, McFadyen BJ, Belzile S, Regniere M. The ability of the Biodex stability system to distinguish level of function in subjects with a second-degree ankle sprain. *Clin Rehabil.* 2007;21(1):73-81.
  95. Jerosch J, Bischof M. Proprioceptive capabilities of the ankle in stable and unstable joints. *Sports Exer Injury.* 1996;2:167-171.
  96. Hamilton RT, Shultz SJ, Schmitz RJ, Perrin DH. Triple-hop distance as a valid predictor of lower limb strength and power. *J Athl Train.* 2008;43(2):144-151.
  97. Houston MN, Van Lunen BL, Hoch MC. Health-related quality of life in individuals with chronic ankle instability. *J Athl Train.* 2014;49(6):758-763.
  98. Tyler TF, McHugh MP, Mirabella MR, Mullaney MJ, Nicholas SJ. Risk factors for noncontact ankle sprains in high school football players: the role of previous ankle sprains and body mass index. *Am J Sports Med.* 2006;34(3):471-475.
  99. Yard E, Comstock D. Injury patterns by body mass index in US high school athletes. *J Phys Act Health.* 2011;8(2):182-191.
  100. Jackson KM. Fitting of mathematical functions to biomechanical data. *IEEE Trans Biomed Eng.* 1979;26(2):122-124.
  101. Cappozzo A. Gait analysis methodology. *Hum Movement Sci.* 1984;3(1):27-50.
  102. James GM. Curve alignment by moments. *Ann Appl Stat.* 2007;1(2):480-501.
  103. Kneip A, Gasser T. Statistical tools to analyze data representing a sample of curves. *Ann Statist.* 1992;20(3):1266-1305.
  104. Muller P, Quintana F, Rosner GL. A product partition model with regression on covariates. *Journal Comput Graph Statistics : a joint publication of American Statistical Association, Institute of Mathematical Statistics, Interface Foundation of North America.* 2011;20(1):260-278.
  105. Page GL, Quintana FA. Predictions based on the clustering of heterogeneous functions via shape and subject-specific covariates. *Bayesian Anal.* 2015;10(2):379-410.
  106. Bahr R, Bahr IA. Incidence of acute volleyball injuries: a prospective cohort study of injury mechanisms and risk factors. *Scand J Med Sci Sports.* 1997;7(3):166-171.
  107. Ekstrand J, Tropp H. The incidence of ankle sprains in soccer. *Foot Ankle.* 1990;11(1):41-44.
  108. Hubbard TJ, Kaminski TW, Vander Griend RA, Kovalski JE. Quantitative assessment of mechanical laxity in the functionally unstable ankle. *Med Sci Sports Exer.* 2004;36(5):760-766.

109. Hertel J, Denegar CR, Monroe MM, Stokes WL. Talocrural and subtalar joint instability after lateral ankle sprain. *Med Sci Sports Exerc.* 1999;31(11):1501-1508.
110. Baumhauer JF, Alosa DM, Renstrom AF, Trevino S, Beynnon B. A prospective study of ankle injury risk factors. *Am J Sports Med.* 1995;23(5):564-570.
111. Webster KA, Gribble PA. A comparison of electromyography of gluteus medius and maximus in subjects with and without chronic ankle instability during two functional exercises. *Phys Ther Sport.* 2013;14(1):17-22.
112. Bullock-Saxton JE, Janda V, Bullock MI. The influence of ankle sprain injury on muscle activation during hip extension. *International journal of sports medicine.* 1994;15(6):330-334.
113. Friel K, McLean N, Myers C, Caceres M. Ipsilateral hip abductor weakness after inversion ankle sprain. *J Athl Train.* 2006;41(1):74-78.
114. Docherty CL, Moore JH, Arnold BL. Effects of strength training on strength development and joint position sense in functionally unstable ankles. *J Athl Train.* 1998;33(4):310-314.
115. Glencross D, Thornton E. Position sense following joint injury. *J Sports Med Phys Fitness.* 1981;21(1):23-27.
116. Konradsen L, Magnusson P. Increased inversion angle replication error in functional ankle instability. *Knee Surg Sports Traumatol Arthrosc.* 2000;8(4):246-251.
117. Johnson MB, Johnson CL. Electromyographic response of peroneal muscles in surgical and nonsurgical injured ankles during sudden inversion. *J Orthop Sports Phys Ther.* 1993;18(3):497-501.
118. Konradsen L, Ravn JB. Prolonged peroneal reaction time in ankle instability. *Int J Sports Med.* 1991;12(3):290-292.
119. Lofvenberg R, Karrholm J, Sundelin G, Ahlgren O. Prolonged reaction time in patients with chronic lateral instability of the ankle. *Am J Sports Med.* 1995;23(4):414-417.
120. Mitchell A, Dyson R, Hale T, Abraham C. Biomechanics of ankle instability. Part 1: Reaction time to simulated ankle sprain. *Med Sci Sports Exerc.* 2008;40(8):1515-1521.
121. Beckman SM, Buchanan TS. Ankle inversion injury and hypermobility: effect on hip and ankle muscle electromyography onset latency. *Arch Phys Med Rehabil.* 1995;76(12):1138-1143.
122. Vaes P, Van Gheluwe B, Duquet W. Control of acceleration during sudden ankle supination in people with unstable ankles. *J Orthop Sports Phys Ther.* 2001;31(12):741-752.
123. Hopkins JT, Feland JB, Hunter I. A comparison of voluntary and involuntary measures of electromechanical delay. *Int J Neurosci.* 2007;117(5):597-604.
124. Palmieri-Smith RM, Hopkins JT, Brown TN. Peroneal activation deficits in persons with functional ankle instability. *Am J Sports Med.* 2009;37(5):982-988.
125. Konradsen L, Voigt M, Hojsgaard C. Ankle inversion injuries. The role of the dynamic defense mechanism. *Am J Sports Med.* 1997;25(1):54-58.
126. Nawoczenski DA, Owen MG, Ecker ML, Altman B, Epler M. Objective evaluation of peroneal response to sudden inversion stress. *J Orthop Sports Phys Ther.* 1985;7(3):107-109.
127. Wikstrom EA, Naik S, Lodha N, Cauraugh JH. Bilateral balance impairments after lateral ankle trauma: a systematic review and meta-analysis. *Gait Posture.* 2010;31(4):407-414.

128. Wikstrom EA, Naik S, Lodha N, Cauraugh JH. Balance capabilities after lateral ankle trauma and intervention: a meta-analysis. *Med Sci Sports Exerc.* 2009;41(6):1287-1295.
129. Brown C, Bowser B, Simpson KJ. Movement variability during single leg jump landings in individuals with and without chronic ankle instability. *Clin Biomech.* 2012;27(1):52-63.
130. Brown C, Padua D, Marshall SW, Guskiewicz K. Individuals with mechanical ankle instability exhibit different motion patterns than those with functional ankle instability and ankle sprain copers. *Clin Biomech.* 2008;23(6):822-831.
131. Brown CN, Padua DA, Marshall SW, Guskiewicz KM. Hip kinematics during a stop-jump task in patients with chronic ankle instability. *J Athl Train.* 2011;46(5):461-467.
132. Doherty C, Bleakley C, Hertel J, Caulfield B, Ryan J, Delahunt E. Single-leg drop landing movement strategies in participants with chronic ankle instability compared with lateral ankle sprain 'copers'. *Knee Surg Sports Traumatol Arthrosc.* 2015.
133. Doherty C, Bleakley C, Hertel J, Caulfield B, Ryan J, Delahunt E. Dynamic balance deficits in individuals with chronic ankle instability compared to ankle sprain copers 1 year after a first-time lateral ankle sprain injury. *Knee Surg Sports Traumatol Arthrosc.* 2016;24(4):1086-1095.
134. Wilkerson GB, Horn-Kingery HM. Treatment of the inversion ankle sprain: comparison of different modes of compression and cryotherapy. *J Orthop Sports Phys Ther.* 1993;17(5):240-246.
135. Ogilvie-Harris DJ, Gilbert M. Treatment modalities for soft tissue injuries of the ankle: a critical review. *Clin J Sport Med.* 1995;5(3):175-186.
136. Vicenzino B, Branjerdporn M, Teys P, Jordan K. Initial changes in posterior talar glide and dorsiflexion of the ankle after mobilization with movement in individuals with recurrent ankle sprain. *J Orthop Sports Phys Ther.* 2006;36(7):464-471.
137. Hoch MC, Andreatta RD, Mullineaux DR, et al. Two-week joint mobilization intervention improves self-reported function, range of motion, and dynamic balance in those with chronic ankle instability. *J Orthop Res.* 2012;30(11):1798-1804.
138. Hale SA, Hertel J, Olmsted-Kramer LC. The effect of a 4-week comprehensive rehabilitation program on postural control and lower extremity function in individuals with chronic ankle instability. *J Orthop Sports Phys Ther.* 2007;37(6):303-311.
139. McKeon PO, Hertel J. Systematic review of postural control and lateral ankle instability, part II: is balance training clinically effective? *J Athl Train.* 2008;43(3):305-315.
140. de Noronha M, Franca LC, Haupenthal A, Nunes GS. Intrinsic predictive factors for ankle sprain in active university students: a prospective study. *Scand J Med Sci Sports.* 2013;23(5):541-547.
141. Butler RJ, Lehr ME, Fink ML, Kiesel KB, Plisky PJ. Dynamic balance performance and noncontact lower extremity injury in college football players: an initial study. *Sports Health.* 2013;5(5):417-422.
142. Smith CA, Chimera NJ, Warren M. Association of y balance test reach asymmetry and injury in division I athletes. *Med Sci Sports Exerc.* 2015;47(1):136-141.
143. Cole TJ, Bellizzi MC, Flegal KM, Dietz WH. Establishing a standard definition for child overweight and obesity worldwide: international survey. *BMJ.* 2000;320(7244):1240-1243.



144. Lockie RG, Schultz AB, Callaghan SJ, Jeffriess MD. The effects of isokinetic knee extensor and flexor strength on dynamic stability as measured by functional reaching. *Isokinet Exerc Sci.* 2013;21(4):301-309.
145. Robinson R, Gribble P. Kinematic predictors of performance on the star excursion balance test. *J Sport Rehabil.* 2008;17(4):347-357.
146. McKeon PO, Ingersoll CD, Kerrigan DC, Saliba E, Bennett BC, Hertel J. Balance training improves function and postural control in those with chronic ankle instability. *Med Sci Sports Exerc.* 2008;40(10):1810-1819.
147. Earl JE, Hertel J. Lower-extremity muscle activation during the star excursion balance tests. *J Sport Rehabil.* 2001;10(2):93-104.
148. Gribble PA, Hertel J, Denegar CR. Chronic ankle instability and fatigue create proximal joint alterations during performance of the Star Excursion Balance Test. *Int J Sports Med.* 2007;28(3):236-242.
149. Gribble PA, Hertel J, Denegar CR, Buckley WE. The effects of fatigue and chronic ankle instability on dynamic postural control. *J Athl Train.* 2004;39(4):321-329.
150. de Noronha M, Refshauge KM, Herbert RD, Kilbreath SL, Hertel J. Do voluntary strength, proprioception, range of motion, or postural sway predict occurrence of lateral ankle sprain? *Br J Sports Med.* 2006;40(10):824-828; discussion 828.
151. Radford JA, Burns J, Buchbinder R, Landorf KB, Cook C. Does stretching increase ankle dorsiflexion range of motion? A systematic review. *Br J Sports Med.* 2006;40(10):870-875.
152. Lentell G, Baas B, Lopez D, McGuire L, Sarrels M, Snyder P. The contributions of proprioceptive deficits, muscle function, and anatomic laxity to functional instability of the ankle. *J Orthop Sports Phys Ther.* 1995;21(4):206-215.
153. Louwerens JW, Ginai AZ, van Linge B, Snijders CJ. Stress radiography of the talocrural and subtalar joints. *Foot Ankle Int.* 1995;16(3):148-155.
154. Ryan L. Mechanical stability, muscle strength and proprioception in the functionally unstable ankle. *Aust J Physiother.* 1994;40(1):41-47.
155. Tropp H, Odenrick P, Gillquist J. Stabilometry recordings in functional and mechanical instability of the ankle joint. *Int J Sports Med.* 1985;6(3):180-182.
156. Freeman MA. Instability of the foot after injuries to the lateral ligament of the ankle. *J Bone Joint Surg Br.* 1965;47(4):669-677.
157. Freeman MA, Wyke B. Articular reflexes at the ankle joint: an electromyographic study of normal and abnormal influences of ankle-joint mechanoreceptors upon reflex activity in the leg muscles. *Br J Surg.* 1967;54(12):990-1001.
158. Delahunt E. Peroneal reflex contribution to the development of functional instability of the ankle joint. *Phys Ther Sport.* 2007;8(2):98-104.
159. Lentell G, Katzman LL, Walters MR. The relationship between muscle function and ankle stability. *J Orthop Sports Phys Ther.* 1990;11(12):605-611.
160. Kaminski TW, Perrin DH, Gansneder BM. Eversion strength analysis of uninjured and functionally unstable ankles. *J Athl Train.* 1999;34(3):239-245.
161. Bernier J, Perrin D, Rijke A. Effect of unilateral functional instability of the ankle on postural sway and inversion and eversion strength. *J Athl Train.* 1997;32:226 - 232.

**Table 1. Subject Demographics**

Group	N	Age (yr)	Height (cm)	Mass (kg)	BMI <sup>d</sup> (kg/m <sup>2</sup> )	FAAM <sup>e</sup> - ADL <sup>f</sup> (%)	FAAM <sup>e</sup> - Sports (%)	MAII <sup>g</sup> No. “yes” responses	No. <sup>h</sup> Ankle Sprains (n)	Duration since last ankle sprain (months)
CAI <sup>a</sup>	50 M <sup>b</sup>	21.8	174.4	74.1	24.3	85.3	68.5	3.5	3.5	11.6
	50 F <sup>c</sup>	(2.3)	(10.8)	(13.8)	(3.7)	(5.7)	(10.0)	(1.1)	(2.3)	(10.7)

Data are mean (SD).

<sup>a</sup>Chronic Ankle Instability

<sup>b</sup>Male

<sup>c</sup>Female

<sup>d</sup>Body Mass Index

<sup>e</sup>Foot and Ankle Ability Measure

<sup>f</sup>Activities of Daily Living

<sup>g</sup>Modified Ankle Instability Index

<sup>h</sup>No., number of

**Table 2. Post Hoc Pairwise Comparisons Between Frontal Kinematic Movement-Pattern Clusters**

Cluster	Frontal Cluster						Failed trials	BMI <sup>c</sup> (kg/m <sup>2</sup> )	FAAM <sup>f</sup> - Sports (%)	FAAM <sup>g</sup> - ADL <sup>f</sup> (%)	MAII <sup>h</sup> “yes” responses	No. <sup>i</sup> ankle sprains
	Gender (M/F <sup>a</sup> )	SEBT-ANT <sup>b</sup> (% LL) <sup>c</sup>	Biodex balance (index)	Figure 8 hop (sec)	Triple cross hop (m)	DFROM <sup>d</sup> (deg)						
1	0.29 <sup>k,l</sup>	65.27 <sup>k</sup>	0.84	12.51 <sup>k,l</sup>	4.42 <sup>k,l</sup>	47.35 <sup>j</sup>	4.94	23.84	69.69	86.09	3.54	3.43
2	0.12 <sup>m,n</sup>	62.45	0.71	13.62 <sup>m,n</sup>	4.20 <sup>n</sup>	41.25 <sup>n</sup>	5.50	24.52	67.75	80.50 <sup>n</sup>	3.75	3.38
3	0.65	61.01	0.81	11.00	5.10 <sup>o</sup>	43.46	4.72	24.74	68.55	85.08	3.40	3.83
4	0.79	65.29	0.74	10.02	5.92	47.59	4.00	23.42	70.36	88.21	3.57	2.71
p-value	0.00*	0.03*	0.31	0.00*	0.00*	0.01*	0.61	0.56	0.91	0.03*	0.84	0.50

Data are mean.

Frontal clusters 5 and 6 were not included in analyses for post hoc pairwise comparisons due to a small sample size.

<sup>a</sup>M = male (denote by 1); F, female (denoted by 0)

<sup>b</sup>SEBT-ANT = Star Excursion Balance Test–Anterior

<sup>c</sup>LL = Leg Length

<sup>d</sup>DFROM = dorsiflexion range of motion

<sup>e</sup>BMI = Body Mass Index

<sup>f</sup>FAAM = Foot and Ankle Instability Measure

<sup>g</sup>ADL = Activities of Daily Living

<sup>h</sup>MAII = Modified Ankle Instability Index

<sup>i</sup>No., number of

<sup>j</sup>indicates statistically significant differences between clusters 1 and 2.

<sup>k</sup>indicates statistically significant differences between clusters 1 and 3.

<sup>l</sup>indicates statistically significant differences between clusters 1 and 4.

<sup>m</sup>indicates statistically significant differences between clusters 2 and 3.

<sup>n</sup>indicates statistically significant differences between clusters 2 and 4.

<sup>o</sup>indicates statistically significant differences between clusters 3 and 4.

**Table 3. Characteristics for Each of 4 Frontal Kinematic Movement Pattern Clusters**

Cluster	Predictor 1	Predictor 2	% of values
1 (n = 35)	Triple cross hop (2.38–4.3 m)	Gender (female)	45.7%
	Figure 8 hop (12.2–20.7 sec)	Gender (female)	45.7%
	Triple cross hop (2.38–4.3 m)	Figure 8 hop (12.2–20.7 sec)	37.1%
	SEBT-ANT <sup>a</sup> (59.5–66.8% LL <sup>b</sup> )	Gender (female)	28.5%
	FAAM <sup>c</sup> -ADL <sup>d</sup> (87–89%)	Gender (female)	28.5%
	Biodex balance (0.25–0.75)	Gender (female)	25.7%
2 (n = 8)	Biodex balance (0.25–0.75)	Gender (female)	62.5%
	Triple cross hop (2.38–4.3 m)	Gender (female)	62.5%
	No. <sup>e</sup> sprains (1–3 episodes)	Gender (female)	50%
	Figure 8 hop (12.2–20.7 sec)	Triple cross hop (2.38–4.3 m)	50%
	Figure 8 hop (12.2–20.7 sec)	Gender (female)	50%
	DFROM <sup>f</sup> (28.4–43.2 deg)	FAAM <sup>c</sup> -ADL <sup>d</sup> (60–87%)	50%
3 (n = 40)	Figure 8 hop (8.3–10.3 sec)	Gender (male)	37.5%
	Triple cross hop (5.56–7.79 m)	Gender (male)	35%
	FAAM <sup>c</sup> -ADL <sup>d</sup> (60–87%)	FAAM <sup>c</sup> -Sports (28–69%)	35%
	Triple cross hop (5.56–7.79 m)	Figure 8 hop (8.3–10.3 sec)	32.5%
	DFROM <sup>f</sup> (43.2–48.4 deg)	MAII <sup>g</sup> “yes” (2–4 responses)	27.5%
	Figure 8 hop (8.3–10.3 sec)	Triple cross hop (5.56–7.79 m)	64.2%
4 (n = 14)	Figure 8 hop (8.3–10.3 sec)	Gender (male)	64.2%
	FAAM <sup>c</sup> -ADL <sup>d</sup> (87–89%)	DFROM <sup>f</sup> (48.4–60.9 deg)	42.8%
	Biodex balance (0.75–0.9)	Gender (male)	35.7%
	Biodex balance (0.75–0.9)	Triple cross hop (5.56–7.79 m)	35.7%
	SEBT-ANT <sup>a</sup> (66.8–83.5 % LL <sup>b</sup> )	DFROM <sup>f</sup> (48.4–60.9 deg)	35.7%

Clusters 5 and 6 were not included due to a small sample size (n = 3).

<sup>a</sup>SEBT-ANT = Star Excursion Balance Test-Anterior

<sup>b</sup>LL = Leg Length

<sup>c</sup>FAAM = Foot and Ankle Instability Measure

<sup>d</sup>ADL = Activities of Daily Living

<sup>e</sup>No., number of

<sup>f</sup>DFROM = Dorsiflexion Range of Motion

<sup>g</sup>MAII = Modified Ankle Instability Index

**Table 4. Multinomial Regression of Prediction Model Accuracy for Frontal Kinematic Movement-Pattern Clusters**

	Frontal Cluster							
	1	2	3	4				
	Number of Subjects				35	8	40	14
	Prediction 1 (n)	Prediction 2 (n)	Prediction 3 (n)	Prediction 4 (n)	Actual Prediction (N)	Actual Unprediction (N)	Actual Prediction Model Accuracy (%)	
Actual 1 (n)	<b>21</b>	3	9	2	<b>21 / 35</b>	14 / 35	60.0	
Actual 2 (n)	5	<b>0</b>	3	0	<b>0 / 8</b>	8 / 8	00.0	
Actual 3 (n)	10	0	<b>28</b>	2	<b>28 / 40</b>	12 / 40	70.0	
Actual 4 (n)	5	0	5	<b>5</b>	<b>5 / 14</b>	10 / 14	35.7	
					<b>54 / 97</b>	44 / 97	<b>55.7</b>	

Data are the number of subjects in each of four clusters.

Clusters 5 and 6 were not included in analyses for prediction model accuracy due to a small sample size (n = 3).

**Table 5. Post Hoc Pairwise Comparisons Between Sagittal Kinematic Movement-Pattern Clusters**

Cluster	Gender (M/F <sup>a</sup> )	Sagittal Cluster					DFROM <sup>d</sup> (deg)	Failed trials	BMI <sup>e</sup> (kg/m <sup>2</sup> )	FAAM <sup>f</sup> - Sports (%)	FAAM <sup>f</sup> - ADL <sup>g</sup> (%)	MAII <sup>h</sup> “yes” responses	No. <sup>i</sup> ankle sprains
		SEBT- ANT <sup>b</sup> (% LL) <sup>c</sup>	Biodex balance (index)	Figure 8 hop (sec)	Triple cross hop (m)	Number of Subjects							
1	0.03 <sup>j,k,l</sup>	65.38 <sup>m</sup>	0.75	13.18 <sup>j,k,l,m</sup>	4.10 <sup>j,k,m</sup>	47.84 <sup>l,m</sup>	5.09 <sup>l</sup>	23.17 <sup>l</sup>	72.50 <sup>l</sup>	86.88 <sup>l</sup>	3.50	2.84	
2	0.52 <sup>n,o,p</sup>	63.41 <sup>p</sup>	0.90	11.30 <sup>n,o</sup>	4.80 <sup>n,o,p</sup>	44.78 <sup>p</sup>	4.35 <sup>o</sup>	24.80	71.30 <sup>o</sup>	87.00 <sup>o</sup>	3.22 <sup>o</sup>	3.61	
3	0.91 <sup>q</sup>	65.20 <sup>r</sup>	0.76	9.70 <sup>q</sup>	5.97 <sup>q</sup>	47.71 <sup>q,r</sup>	3.73 <sup>q</sup>	23.59 <sup>q</sup>	66.73 <sup>q</sup>	85.64 <sup>q</sup>	3.23 <sup>q</sup>	3.55	
4	0.00 <sup>s</sup>	60.94	0.76	15.11 <sup>s</sup>	3.47 <sup>s</sup>	38.58	8.50 <sup>s</sup>	29.05	48.83 <sup>s</sup>	72.00 <sup>s</sup>	4.67	5.50	
5	1.00	56.36	0.86	10.27	5.66	39.31	4.53	24.98	69.29	86.00	3.71	3.82	
p-value	0.00*	0.00*	0.09	0.00*	0.00*	0.00*	0.00*	0.00*	0.00*	0.00*	0.03*	0.11	

Data are mean.

<sup>a</sup>M/F = M = male (denoted by 1); F = female (denoted by 0)

<sup>b</sup>SEBT-ANT = Star Excursion Balance Test–Anterior

<sup>c</sup>LL = Leg Length

<sup>d</sup>DFROM = Dorsiflexion Range of Motion

<sup>e</sup>BMI = Body Mass Index

<sup>f</sup>FAAM = Foot and Ankle Instability Measure

<sup>g</sup>ADL = Activities of Daily Living

<sup>h</sup>MAII = Modified Ankle Instability Index

<sup>i</sup>No., number of

<sup>j</sup>indicates statistically significant differences between clusters 1 and 2.

<sup>k</sup>indicates statistically significant differences between clusters 1 and 3.

<sup>l</sup>indicates statistically significant differences between clusters 1 and 4.

<sup>m</sup>indicates statistically significant differences between clusters 1 and 5.

<sup>n</sup>indicates statistically significant differences between clusters 2 and 3.

<sup>o</sup>indicates statistically significant differences between clusters 2 and 4.

<sup>p</sup>indicates statistically significant differences between clusters 2 and 5.

<sup>q</sup>indicates statistically significant differences between clusters 3 and 4.

<sup>r</sup>indicates statistically significant differences between clusters 3 and 5.

<sup>s</sup>indicates statistically significant differences between clusters 4 and 5.

**Table 6. Characteristics for Each of 5 Sagittal Kinematic Movement Pattern Clusters**

Cluster	Predictor 1	Predictor 2	% of values
1 (n = 32)	Triple cross hop (2.38–4.3 m)	Gender (female)	65.6%
	MAII <sup>a</sup> “yes” (2–4 responses)	Gender (female)	56.2%
	No. <sup>b</sup> sprains (1–3 episodes)	Gender (female)	53.1%
	Biodex balance (0.25–0.75)	Gender (female)	46.8%
	FAAM <sup>c</sup> -Sports (76–79%)	Gender (female)	43.7%
	SEBT-ANT <sup>d</sup> (59.5–66.8 % LL)	Gender (female)	40.6%
2 (n = 23)	FAAM <sup>c</sup> -ADL <sup>e</sup> (89%)	SEBT-ANT <sup>d</sup> (59.5–66.8% LL)	30.4%
	FAAM <sup>c</sup> -ADL <sup>e</sup> (89%)	Biodex balance (0.75–0.9)	30.4%
	BMI (18.4–22.4 kg/m <sup>2</sup> )	No. <sup>b</sup> sprains (1–3 episodes)	30.4%
	Figure 8 hop (8.3–10.3 sec)	Triple cross hop (5.56–7.79 m)	26%
	Figure 8 hop (8.3–10.3 sec)	Gender (male)	26%
3 (n = 22)	Triple cross hop (5.56–7.79 m)	Figure 8 hop (8.3–10.3 sec)	72.7%
	DFROM <sup>g</sup> (48.4–60.9 deg)	Gender (male)	50%
	No. <sup>b</sup> sprains (1–3 episodes)	Gender (male)	36.3%
	SEBT-ANT <sup>d</sup> (46.7–59.5 % LL)	Gender (male)	31.8%
	DFROM <sup>g</sup> (43.2–48.4 deg)	Gender (male)	31.8%
4 (n = 6)	FAAM <sup>c</sup> -Sports (28–69%)	Gender (female)	100%
	Figure 8 hop (12.2–20.7 sec)	Triple cross hop (2.38–4.3 m)	83.3%
	Figure 8 hop (12.2–20.7 sec)	Gender (female)	83.3%
	Figure 8 hop (12.2–20.7 sec)	FAAM <sup>c</sup> -Sports (28–69%)	83.3%
	SEBT-ANT <sup>d</sup> (46.7–59.5 % LL)	Gender (male)	82.3%
	DFROM <sup>g</sup> (28.4–43.2 deg)	Gender (male)	76.4%
5 (n = 17)	No. <sup>b</sup> sprains (3–5 episodes)	SEBT-ANT <sup>d</sup> (46.7–59.5 % LL)	58.8%
	No. <sup>b</sup> sprains (3–5 episodes)	Gender (male)	58.8%
	Figure 8 hop (8.3–10.3 sec)	Gender (male)	58.8%
	Triple cross hop (5.56–7.79 m)	Gender (male)	52.9%

<sup>a</sup>MAII = Modified Ankle Instability Index

<sup>b</sup>No., number of

<sup>c</sup>FAAM = Foot and Ankle Instability Measure

<sup>d</sup>SEBT-ANT = Star Excursion Balance Test–Anterior

<sup>e</sup>ADL = Activities of Daily Living

<sup>f</sup>BMI = Body Mass Index

<sup>g</sup>DFROM = Dorsiflexion Range of Motion

**Table 7. Multinomial Regression of Prediction Model Accuracy for Sagittal Kinematic Movement-Pattern Clusters**

	Sagittal Cluster							
	1	2	3	4	5			
	Number of Subjects							
	Prediction 1 (n)	Prediction 2 (n)	Prediction 3 (n)	Prediction 4 (n)	Prediction 5 (n)	Actual Prediction (N)	Actual Unprediction (N)	Actual Prediction Model Accuracy (%)
Actual 1 (n)	<b>25</b>	6	1	0	0	<b>25 / 32</b>	7 / 32	78.1
Actual 2 (n)	8	<b>7</b>	6	0	2	<b>7 / 23</b>	16 / 23	30.4
Actual 3 (n)	1	6	<b>11</b>	0	4	<b>11 / 22</b>	11 / 22	50.0
Actual 4 (n)	0	1	0	<b>5</b>	0	<b>5 / 6</b>	1 / 6	83.3
Actual 5 (n)	0	2	4	0	<b>11</b>	<b>11 / 17</b>	6 / 17	64.7
						<b>59 / 100</b>	41 / 100	<b>59.0</b>

Data are the number of subjects in each of 5 clusters.



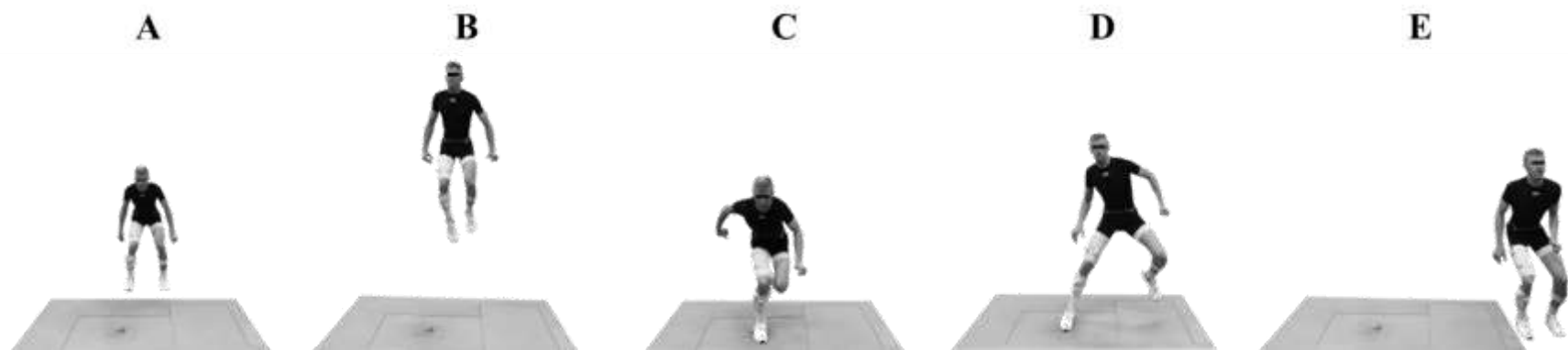


Figure 1. Single-leg maximal vertical forward jump landing/cutting task.

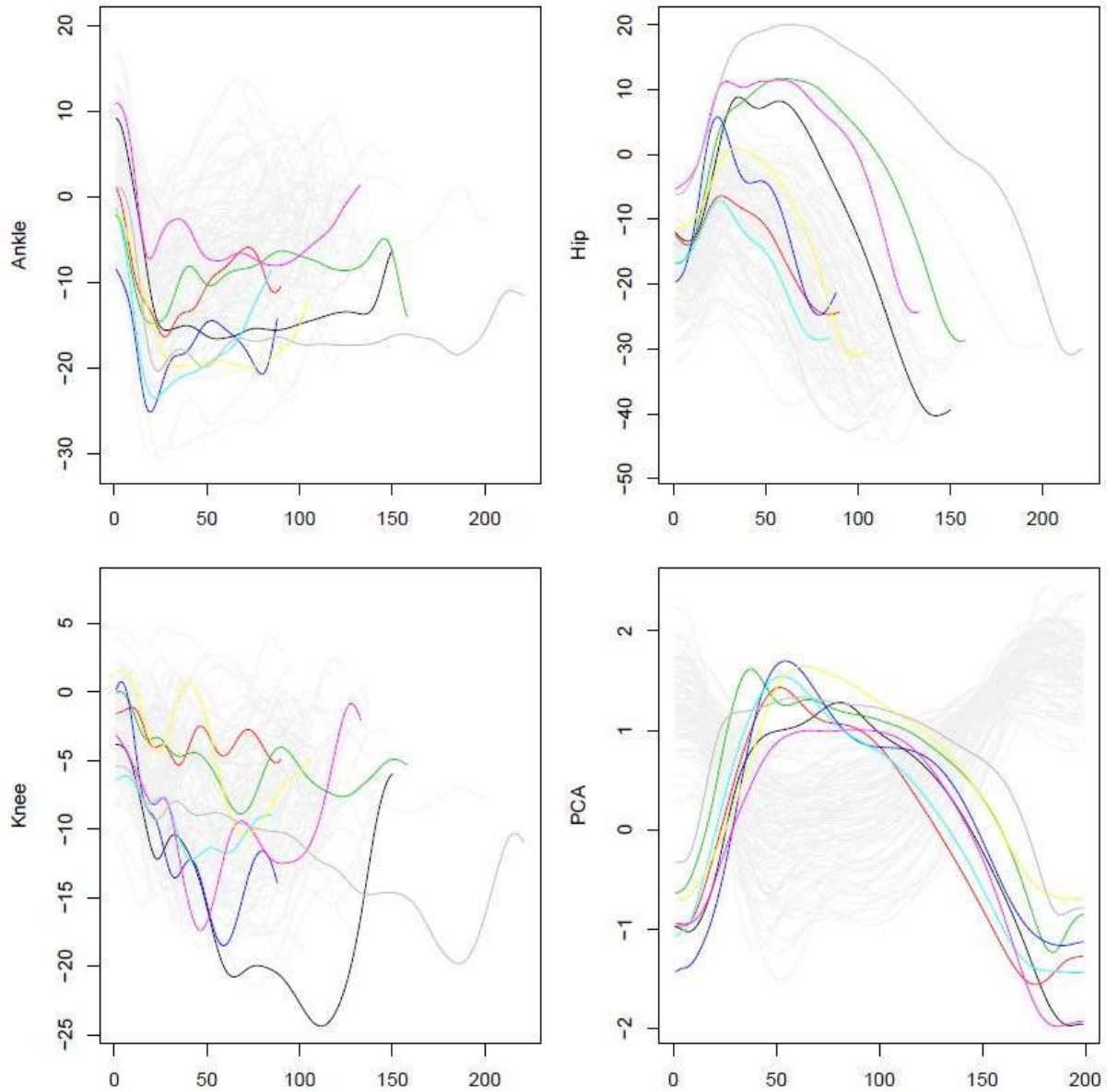


Figure 2. Frontal ankle, knee, and hip joint angles (x-axis) during the stance phase of landing/cutting (y-axis).

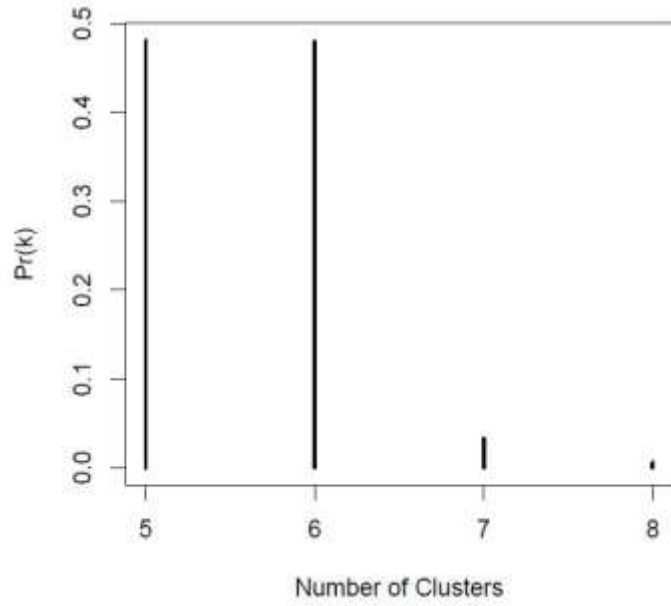


Figure 3. Frontal kinematic probability,  $\text{Pr}(k)$ , for the number of frontal clusters.

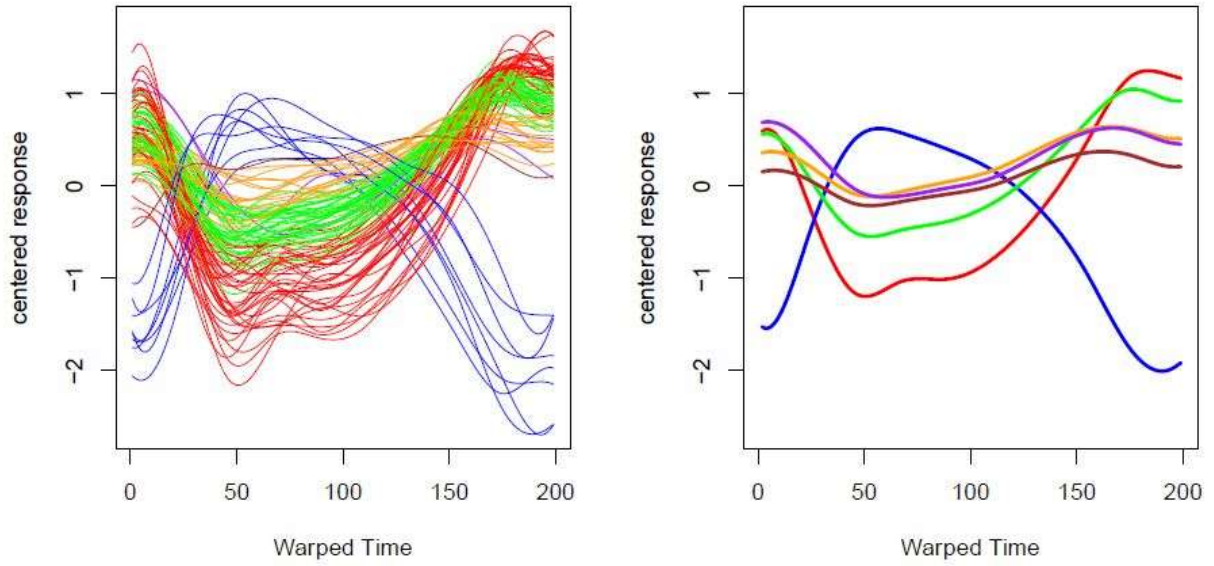


Figure 4. Frontal kinematic representative curves for CAI 100 subjects (left subplot).

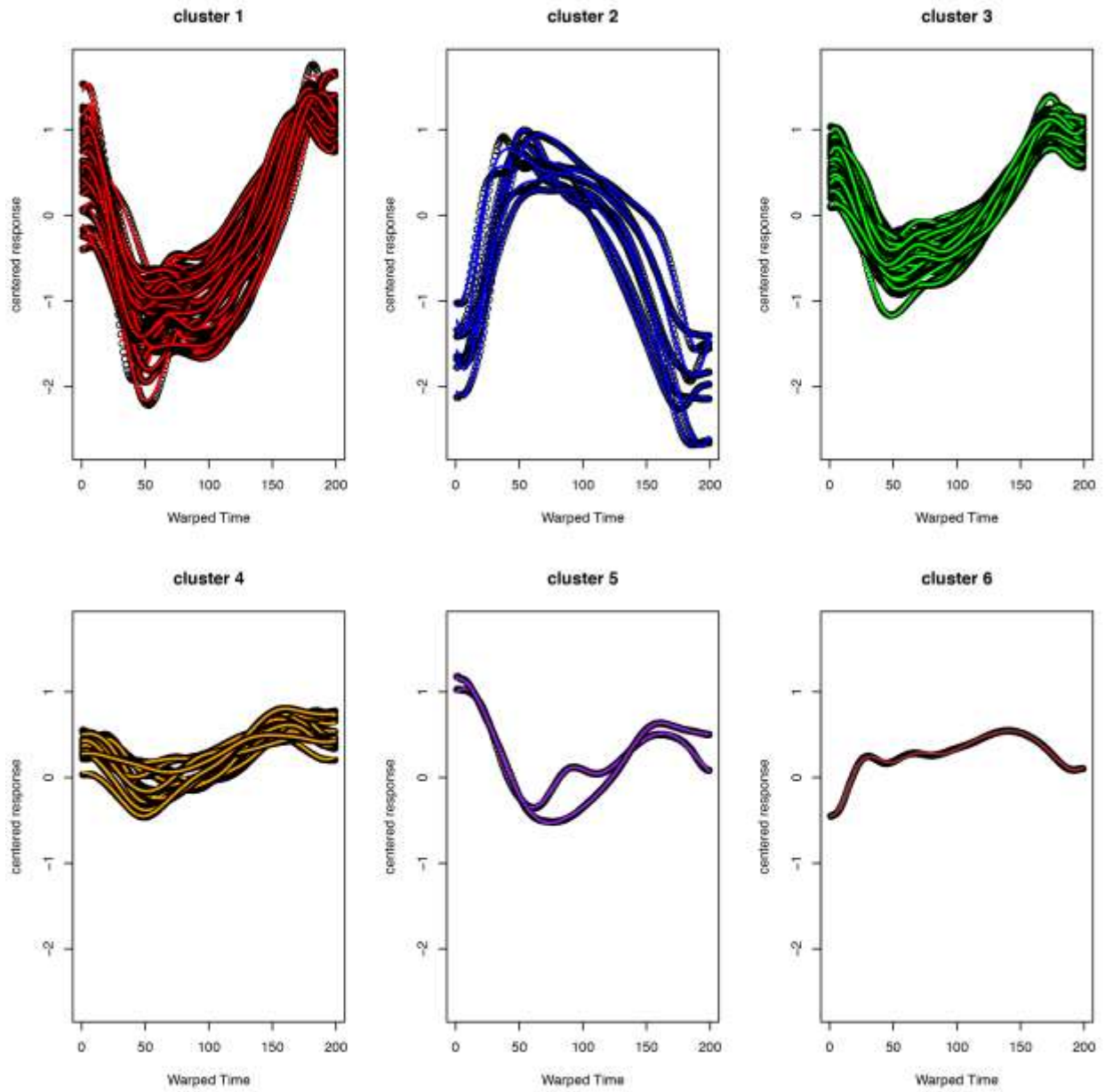


Figure 5. Frontal kinematic representative curves for each of 6 frontal clusters.

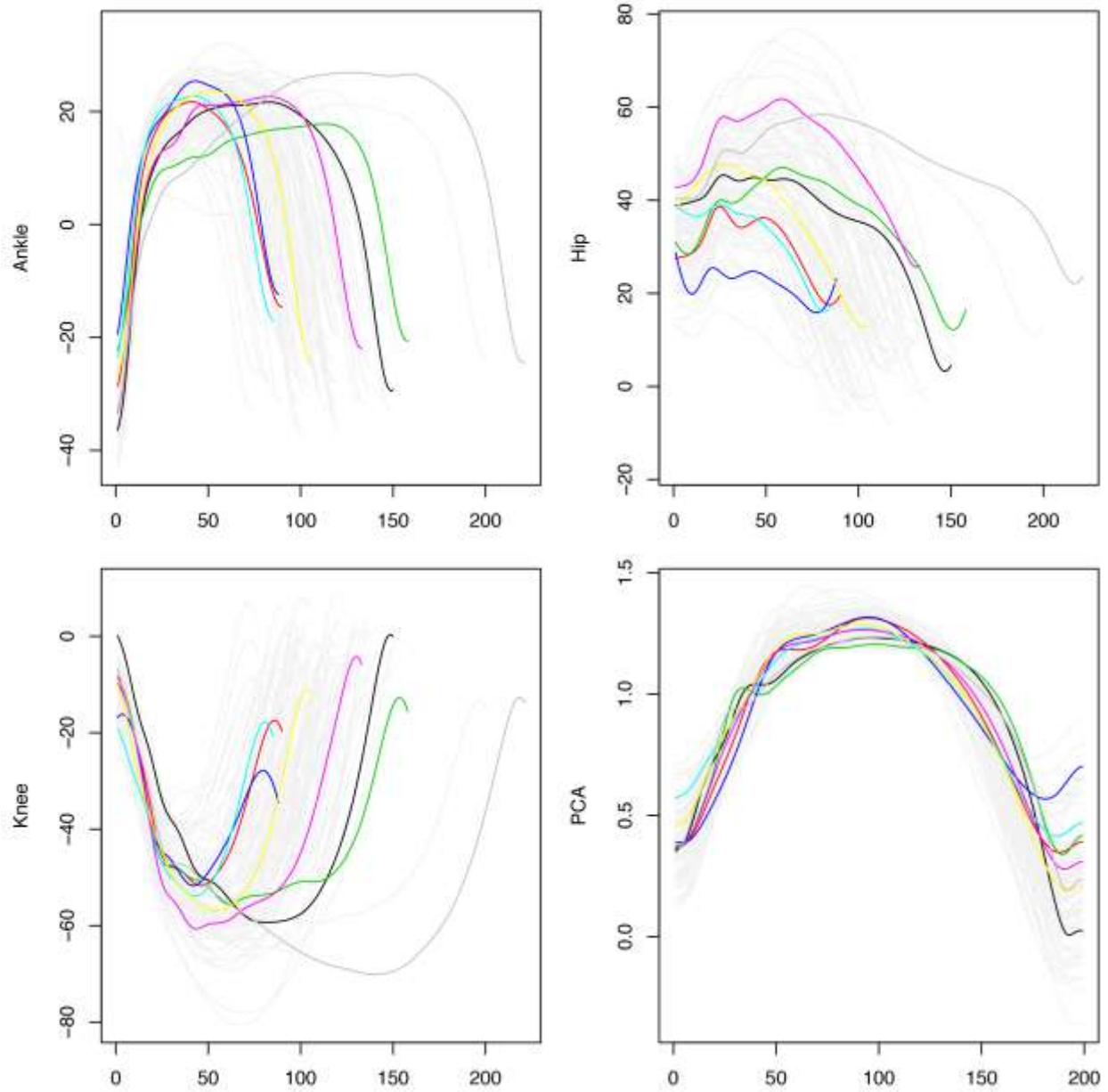


Figure 6. Sagittal ankle, knee, and hip joint angles (x-axis) during the stance phase of landing/cutting (y-axis).

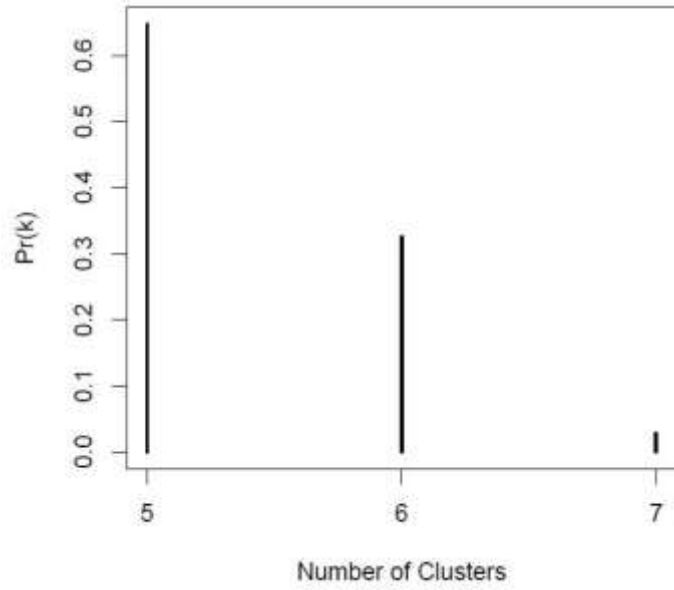


Figure 7. Sagittal kinematic probability,  $\text{Pr}(k)$ , for the number of sagittal clusters.

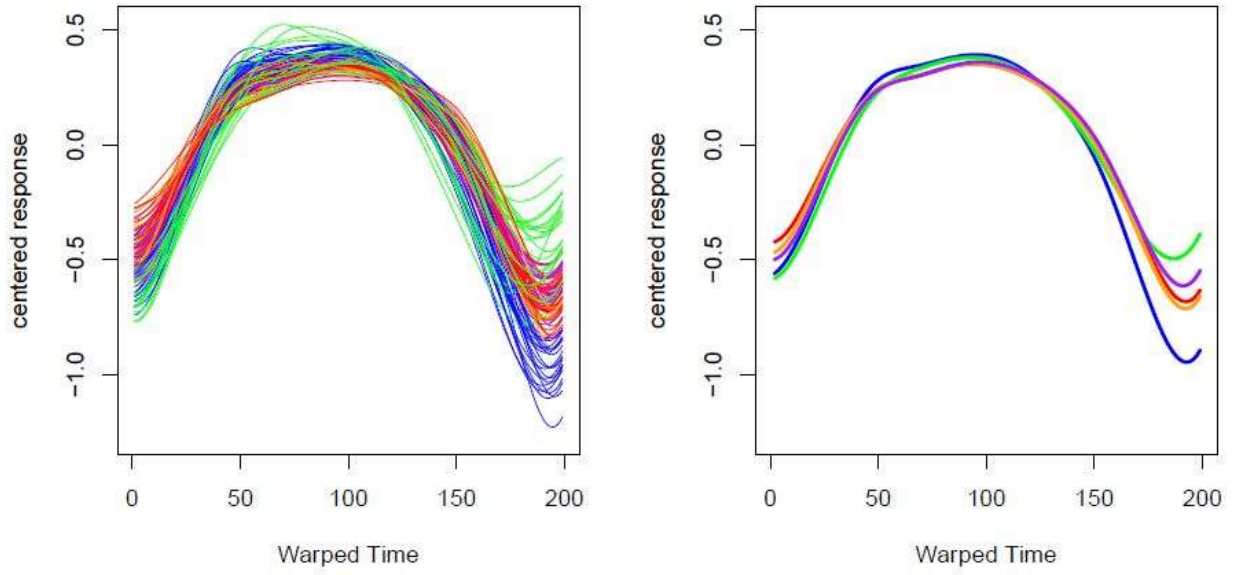


Figure 8. Sagittal kinematic representative curves for 100 CAI subjects (left subplot).



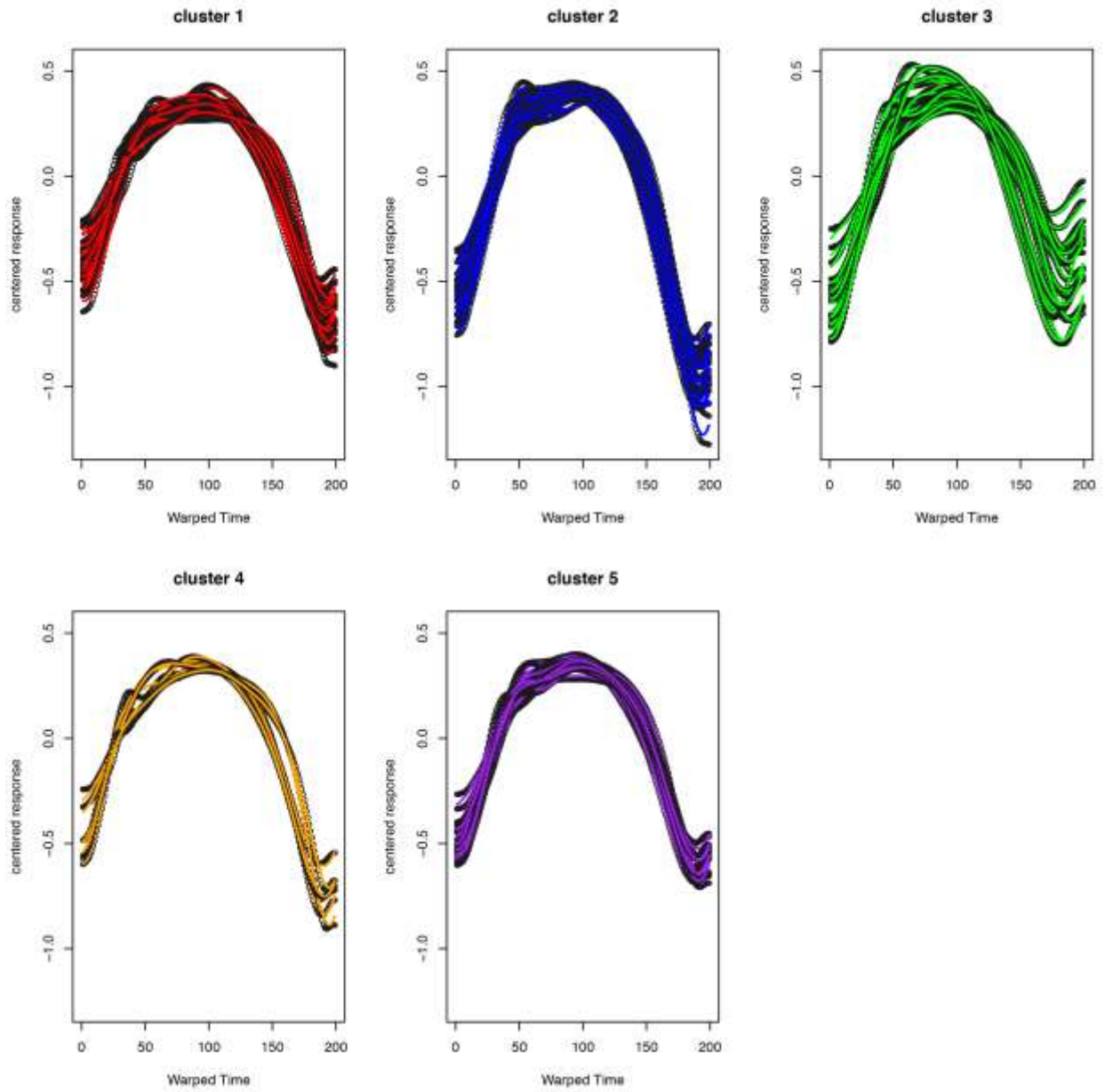


Figure 9. Sagittal kinematic representative curves for each of 5 sagittal clusters.

## Figure Captions

**Figure 1.** Single-leg maximal vertical forward jump landing/cutting task. A, a double-leg standing position; B, a maximal vertical forward jump; C, a single-leg landing; D, a single-leg side-cutting jump to the contralateral side; E, a double-leg landing position.

**Figure 2.** Frontal ankle, knee, and hip joint angles (x-axis) during the stance phase of landing/cutting (y-axis). The functional principle component analysis produced a frontal kinematic representative curve for each subject using shape and length of the curve. When the frontal kinematic representative curve is close to zero (y-axis), the probability is reduced.

**Figure 3.** Frontal kinematic probability,  $Pr(k)$ , for the number of frontal clusters. The product partition model indicated that 5 or 6 clusters had the highest probability to determine the optimal number of frontal kinematic movement-pattern clusters.

**Figure 4.** Frontal kinematic representative curves for CAI 100 subjects (left subplot). Mean of frontal kinematic representative curves for each of 6 frontal clusters (right subplot).

**Figure 5.** Frontal kinematic representative curves for each of 6 frontal clusters.

**Figure 6.** Sagittal ankle, knee, and hip joint angles (x-axis) during the stance phase of landing/cutting (y-axis). The functional principle component analysis produced a sagittal kinematic representative curve for 100 subjects using shape and length of the curve. When the sagittal kinematic representative curve is close to zero (y-axis), the probability is reduced.

**Figure 7.** Sagittal kinematic probability,  $Pr(k)$ , for the number of sagittal clusters. The product partition model indicated that 5 clusters had the highest probability to determine the optimal number of sagittal kinematic movement-pattern clusters.

**Figure 8.** Sagittal kinematic representative curves for 100 CAI subjects (left subplot). Mean of sagittal kinematic representative curves for each of 5 sagittal clusters (right subplot).

**Figure 9.** Sagittal kinematic representative curves for each of 5 sagittal clusters.